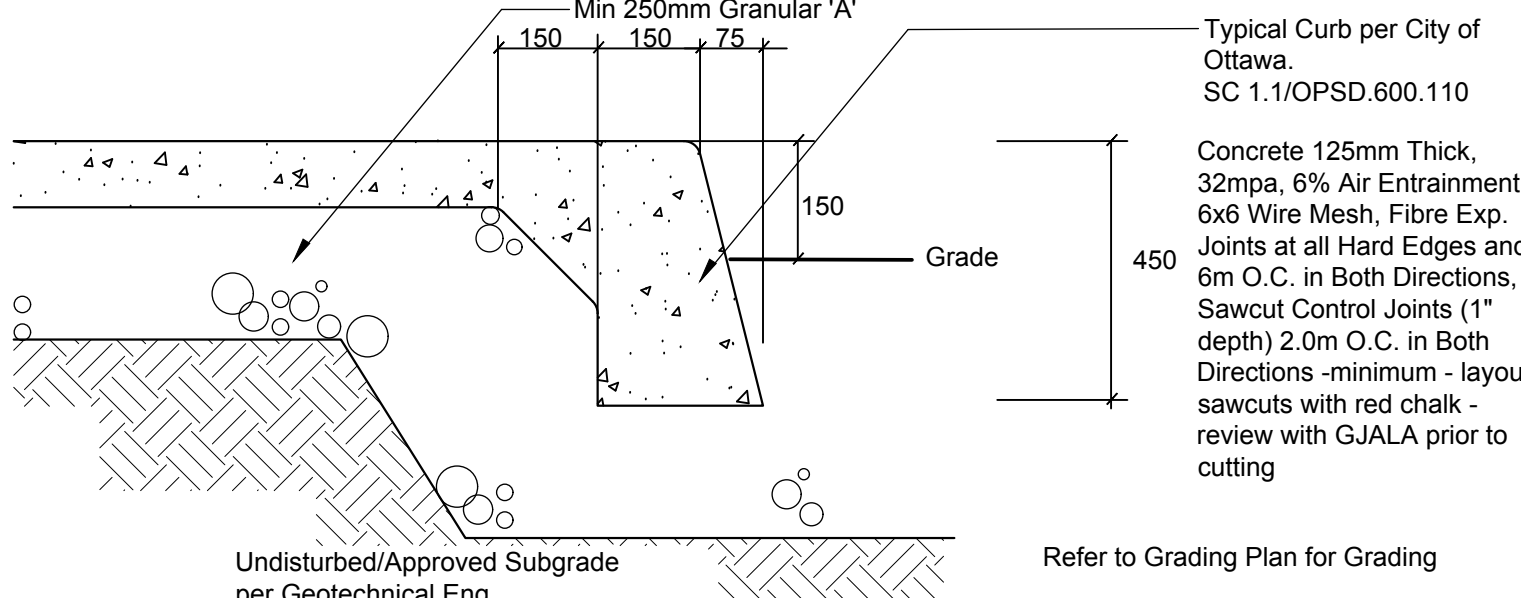


GENERAL CONCRETE NOTES:
ALL CONCRETE FINISHES TO BE APPROVED BY GJA LANDSCAPE ARCHITECT.

SAWCUT LAYOUT FOR ALL AREAS TO BE MARKED ON SITE IN RED CHALK, REVIEWED, ADJUSTED AND APPROVED BY GJA LANDSCAPE ARCHITECT PRIOR TO ANY CUTTING.

EXPANSION JOINT LAYOUT FOR ALL AREAS TO BE LAID OUT ON SITE, REVIEWED, ADJUSTED AND APPROVED BY GJA LANDSCAPE ARCHITECT PRIOR TO ANY CONCRETE POURING.

FINISH: LIGHT BROOM - TOOL EDGE FIRST, THEN WIPE OFF TOOL MARKS WHILE APPLYING BROOM FINISH



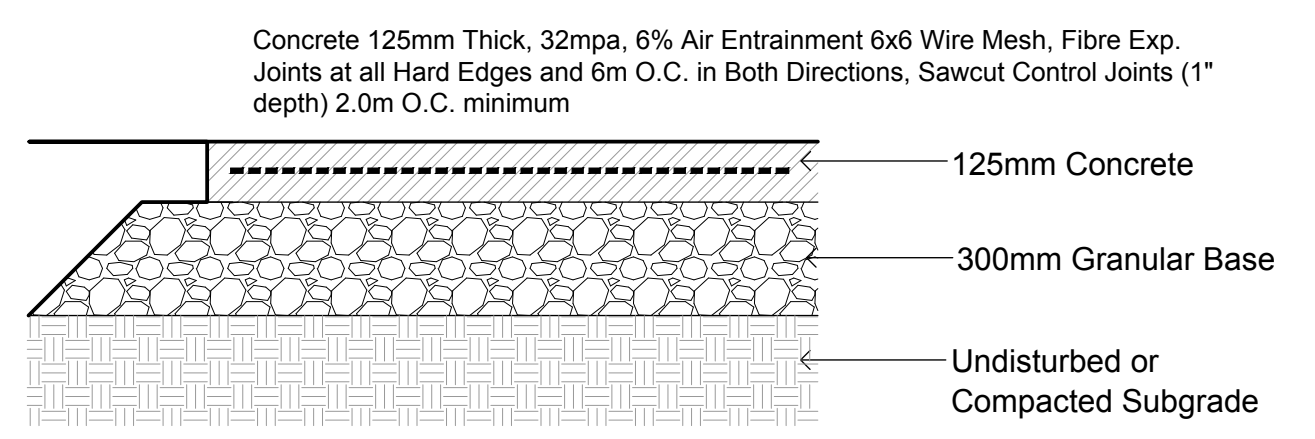
Tool Back Edge First, Then Apply Broom Finish Perpendicular to Curb - Then Tool Curb Edge with 50mm Curb Tool

Sawcut per Plan / per Site Conditions/2M o.c. approx.

Back Edge of Sidewalk
Face of Curb

PLAN
NO Dummy Joints! No Visible Tool Edges Except for Curb Edge

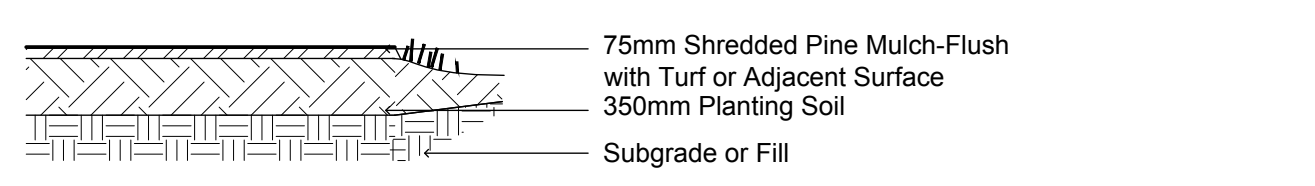
CONCRETE PAVING/MONOLITHIC CURB
32 MPA C2 c/w LIGHT BROOM FINISH - TOOL BACK EDGE FIRST, THEN WIPE OFF TOOL MARKS WHILE APPLYING FINISH
APPLY CURB FACE / EDGE TOOL AFTER APPLYING FINISH



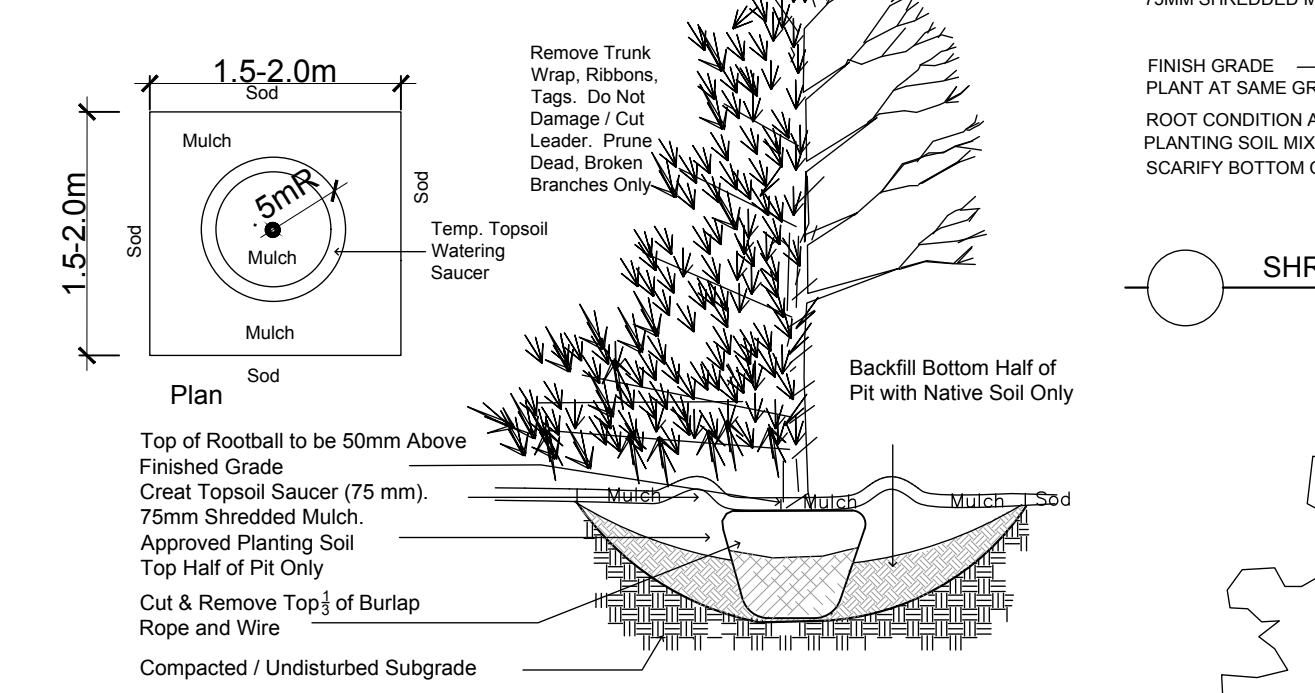
CONCRETE PAVING
32 MPA C2 c/w MAGNESIUM FLOAT FINISH - TOOL EDGE FIRST, THEN WIPE OFF TOOL MARKS WHILE APPLYING FINISH

Plant List - Trees - 9 Colonnade Road MYERS CARSTAR					
Code	Qty.	Botanical Name	Common Name	Size	Condition
GB	10	Ginkgo biloba	Maidenhair Tree	60mm cal	B + B specimen
PG	15	Picea glauca	White Spruce	1.5m Ht.	B + B specimen

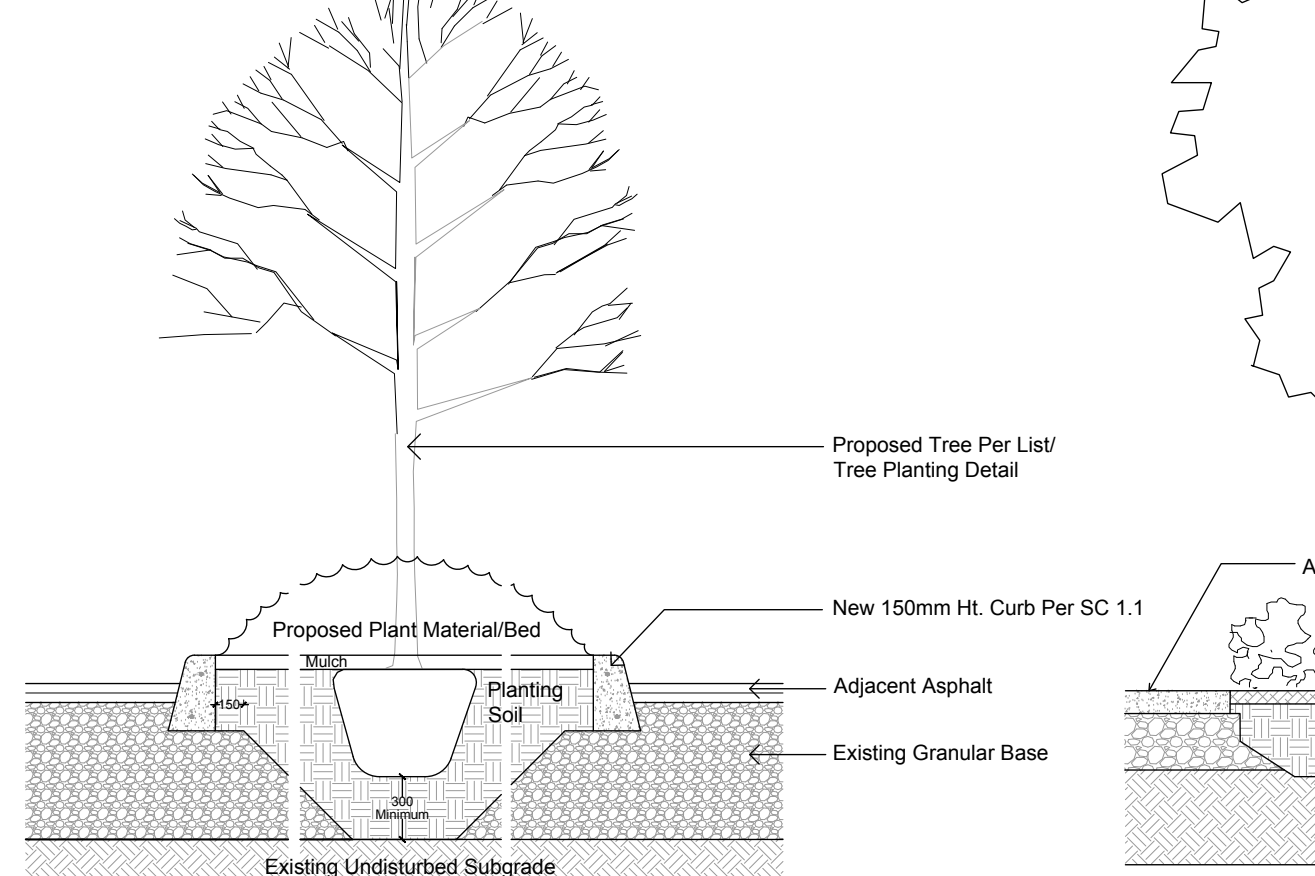
Plant List - Shrubs - 9 Colonnade Road MYERS CARSTAR					
Code	Qty.	Botanical Name	Common Name	Size	Condition
AC	35	Amelanchier canadensis	Serviceberry	60cm Ht.	Pot
CR	35	Cornus racemosa	Grey Dogwood	60cm Ht.	Pot
SB	225	Spiraea bumalda 'Froebell'	Froebel's Spirea	40cm Ht.	Pot
SV	35	Syringa vulgaris alba	White Common Lilac	60cm Ht.	Pot
VL	35	Viburnum lentago	Nannyberry	60cm Ht.	Pot



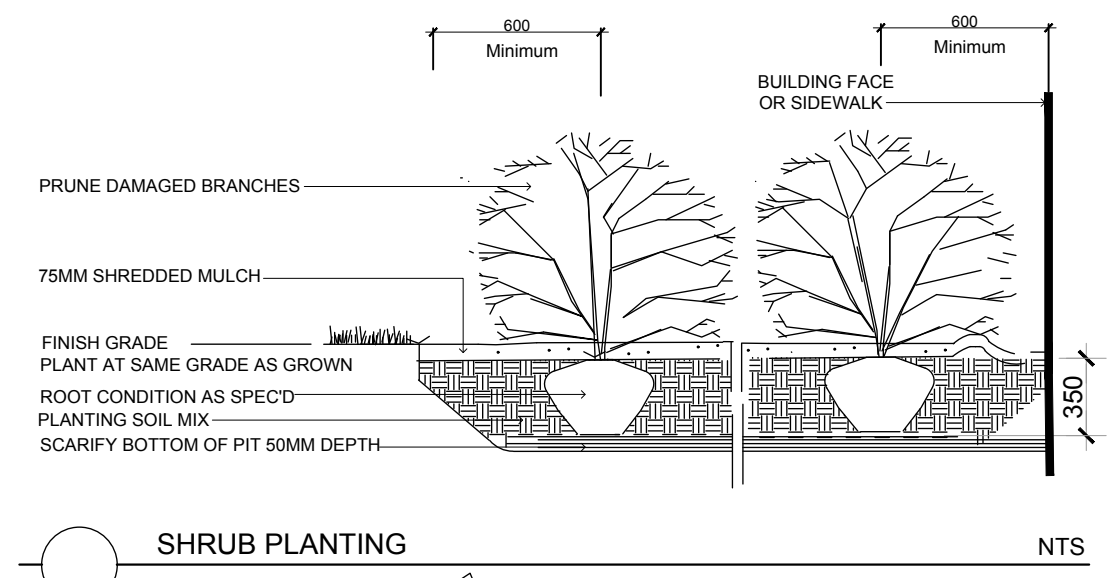
TYPICAL PLANTING BED
During Excavation/Bed Preparation if Extreme Conditions are Encountered (Water, Rock, Gravel...) that could Effect the Planting, Notify GJALA Immediately.



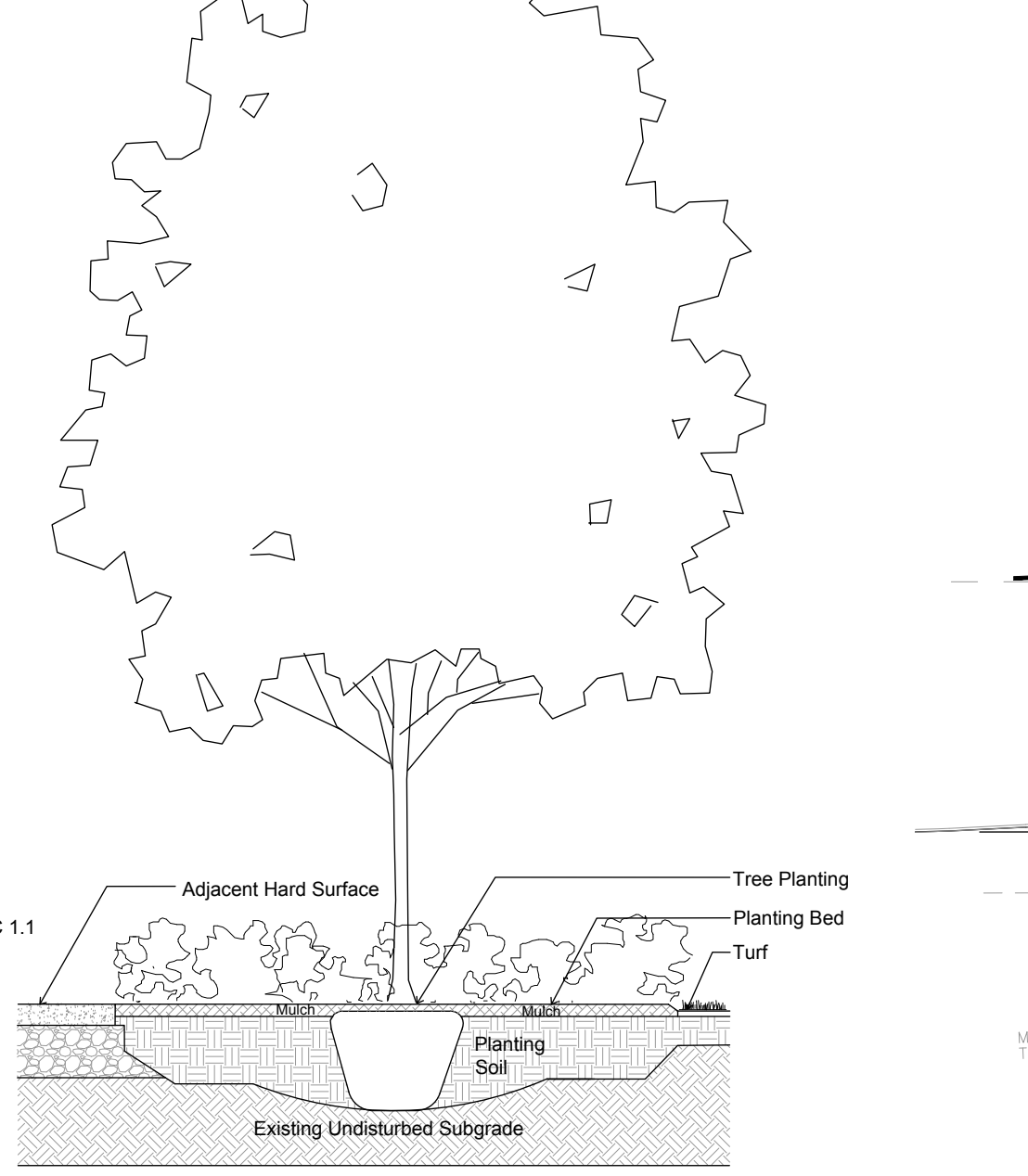
TREE PLANTING
Section



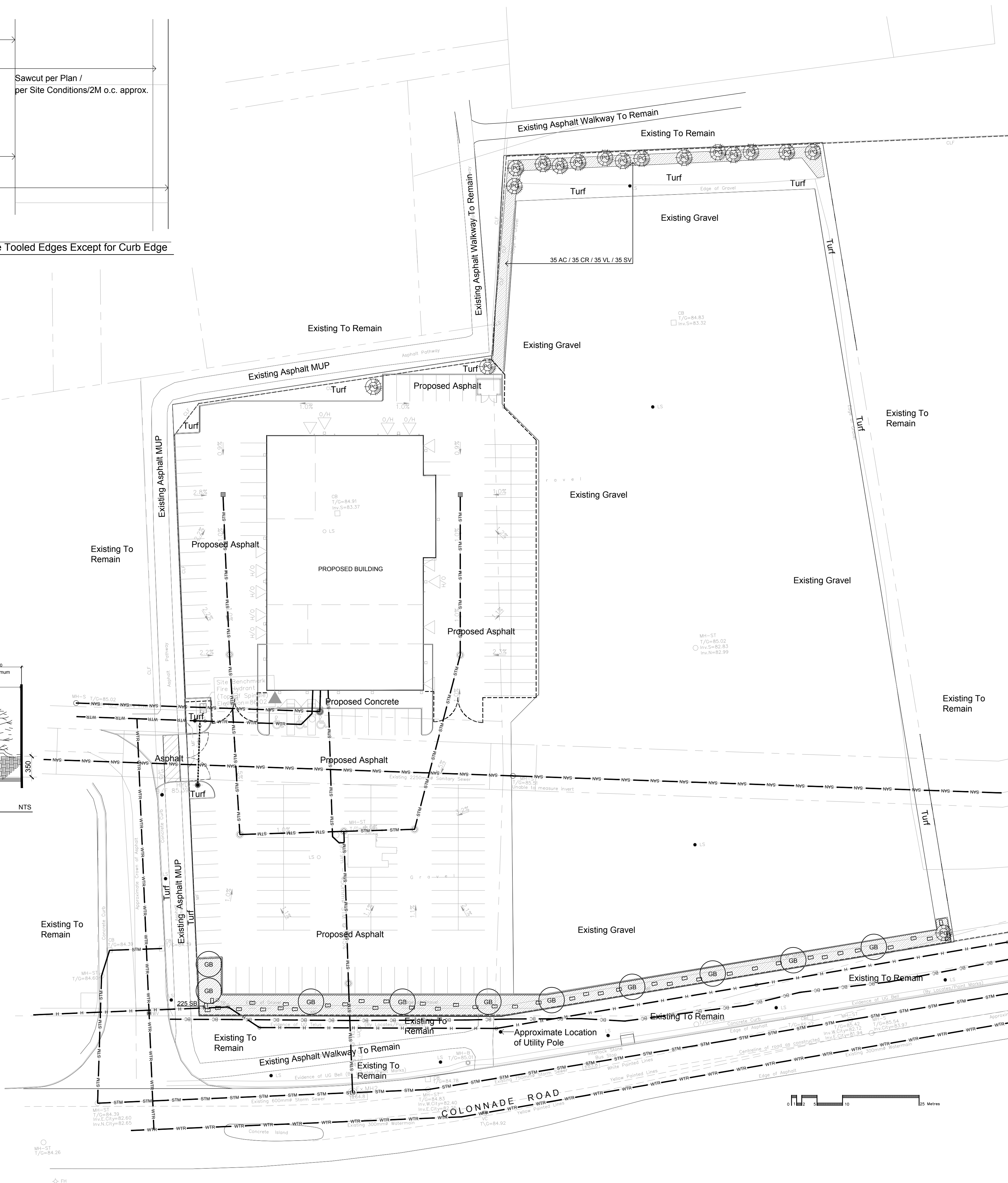
TYPICAL LANDSCAPE ISLAND



SHRUB PLANTING



TREE PLANTING IN PLANTING BED



Drawing Remains the Property of/Copyright Reserved by Gino J. Aiello Landscape Architect. Do Not Use or Reproduce Without Approval of Gino J. Aiello.
NOT To Be Used For Construction Unless indicated by Revision: "FOR LANDSCAPE CONSTRUCTION".
Contractor is Responsible for Verification of Site Locations of all Utilities. Report any Discrepancies Between Site and Drawing Immediately to Gino J. Aiello. Do NOT Proceed Until Clarified.
TURF AREAS TO BE SOD C/W 150MM DEPTH TOPSOIL ON APPROVED SUBGRADE | SOD TO BE #1 GRADE TURFGRASS NURSERY SOD per NSGA - Fine Fescue/Kentucky Bluegrass Sod | PLANTING MIX TO BE APPROVED BY LANDSCAPE ARCHITECT | PLANT MATERIAL TO MEET CNLA STANDARDS/BE APPROVED BY LANDSCAPE ARCHITECT PRIOR TO PLANTING | ALL MATERIALS & WORK TO BE MAINTAINED UNTIL FINAL ACCEPTANCE, (MOWING TURF, WEEDING BEDS, WATERING TURF & PLANTS) & INCLUDE 1 YEAR WARRANTY FROM DATE OF FINAL ACCEPTANCE | PROVIDE WATERING OF ALL PLANT MATERIAL AS REQUIRED FOR PROPER ESTABLISHMENT, UNTIL END OF WARRANTY PERIOD | REFER TO CIVIL ENGINEER'S DRAWING FOR ELEVATIONS / GRADING |

The Landscape Plan is to be read in conjunction with the grading, servicing, site and survey plan | Bare root material to be planted in season only | All plant material locations to be staked on site by the landscape contractor and checked by the landscape architect prior to planting | All trees to be preserved on or directly adjacent to the site will be protected | Plant material are to be installed a minimum of: 3.0m away from any part of any hydro transformer, 3.0m corridor between a fire hydrant and the curb, a 2.5m radius beside or behind a fire hydrant, 2.0m from any servicing/utility line or structure |

- Proposed Coniferous Tree
- Proposed Deciduous Tree
- Proposed Shrub Bed
- Proposed Limestone Blast Rock Approx .9m Long x.5m Deep x.4m Tall.
- Proposed Black Chain Link Fence

1 FOR SPC SUBMISSION 1	NOVEMBER 1 2018
No. Revision	Date

Property Owner
Zena Investment Corporation
1200 Baseline Road Ottawa Ontario K2A 0A6

Gino J. Aiello landscape architect www.GJALA.com
Gino@GJALA.com (613) 852 1343
110 Didsbury Road Unit # 9 | Ottawa Ontario | K2T 0C2

Project **Automobile Body Shop Myers Carstar**
9 Colonnade Road Nepean

Drawing **Landscape Plan**

Date: October 2018
Scale: 1:400
City of Ottawa
Dwg - 17405

Sheet Number
L1

D07-12-17-0033