



**Goodkey, Weedmark
& Associates Limited**

Consulting Engineers

1688 Woodward Dr.
Ottawa, ON
Canada
K2C 3R8

Tel. 613-727-5111
Fax 613-727-5115
info@gwal.com

Principals & Associates

A. Bogdanowicz, P.Eng.
M.G. Carriere, C.E.T.
R.J. McIntyre, P.Eng.
F.W.A. Bann, P.Eng.
R. Lefebvre, P.Eng.
D.R. Vyas, P.Eng., MIEEE
S. Hamilton, P.Eng.
J. Moffat, P.Eng.
E. Pérusse, P.Eng., ing.
R. Boivin, P.Eng., ing.
R. Leonard, P.Eng.
M. Sarasin, P.Eng.

December 18, 2018

VIA E-MAIL

Huntington Properties
1306 Wellington Street, Suite 200
Ottawa, ON
K1Y 3B2

ATTENTION: MS. LISA WESTPHAL

**SUBJECT: 2165 ROBERTSON ROAD, OTTAWA, ON
SITE LIGHTING PLAN AND PHOTOMETRIC STUDY
OUR PROJECT NO. 2018-700**

Dear Madame:

We have designed the site lighting for the new one (1) storey commercial buildings, located at 2165 Robertson Road, Ottawa, in accordance with the following guidelines as requested by the City of Ottawa:

1. It must be designed using only fixtures that meet the criteria for Full Cut-Off (Sharp cut-off) Classification, as recognized by the Illuminating Engineering Society of North America (IESNA or IES), and;
2. It must result in minimal light spillage onto adjacent properties. As a guideline, 0.5 fc is normally the maximum allowable spillage.

Yours very truly,

GOODKEY, WEEDMARK & ASSOCIATES LIMITED



Divyakant (Raj) Vyas, P.Eng., MIEEE
Associate Partner
DRV/cb

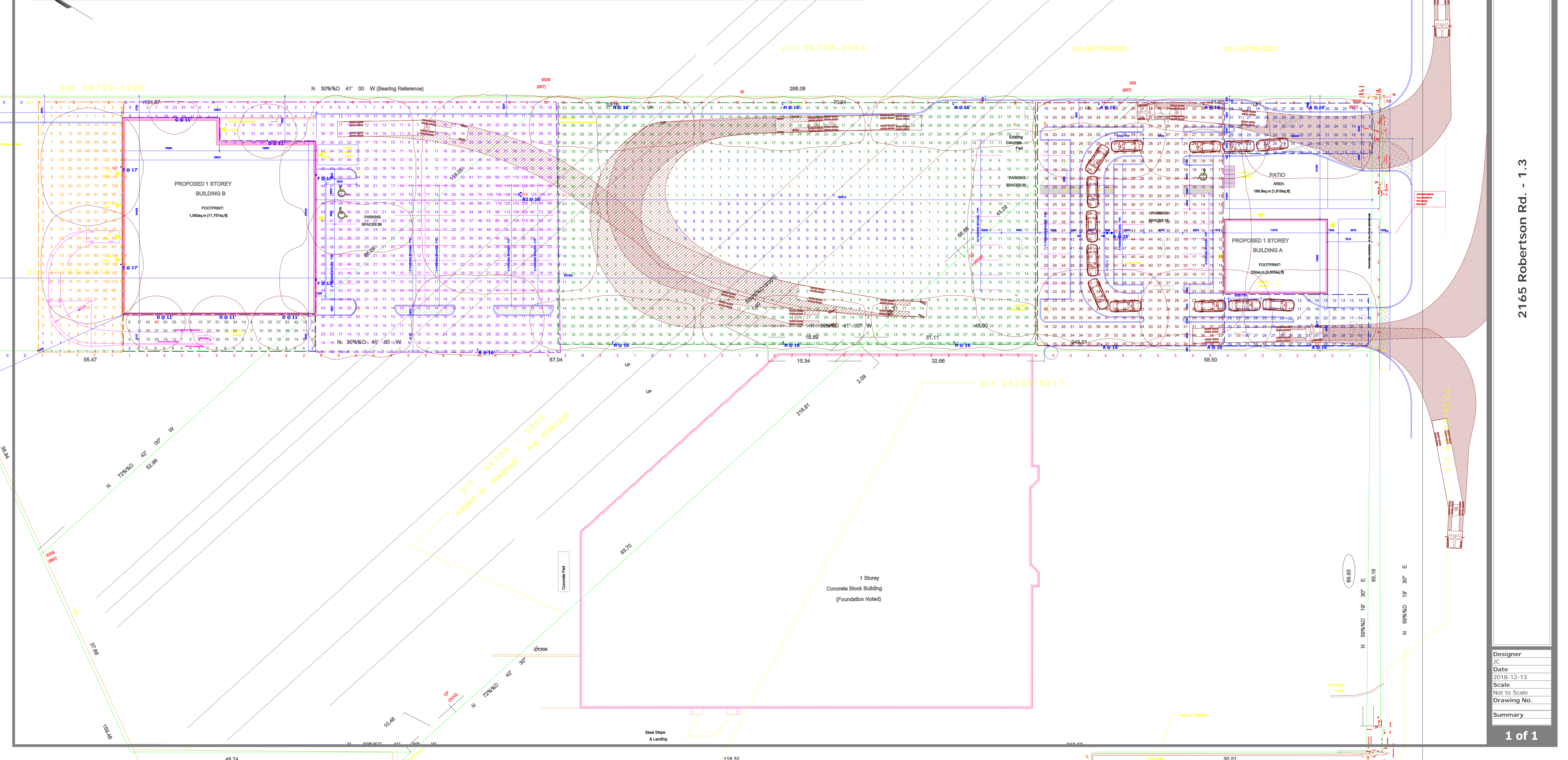
Enclosure: Photometric Study



Symbol	Label	Quantity	Manufacturer	Catalog Number	Description	Lamp	Number Lamps	Filename	Lumens Per Lamp	Light Loss Factor	Wattage
	A	7	EATON - MCGRAW-EDISON (FORMER COOPER LIGHTING)	GPC-AF-01-LED-E1-SL4-1200-HSS	GALLEON PEDESTRIAN LUMINAIRE (1) 70 CRI, 4000K, 1200mA LIGHTSQUARE WITH 16 LEDS EACH AND TYPE IV SPILL LIGHT ELIMINATOR OPTICS WITH HOUSE SIDE SHIELD Industrial, Landscape, Library, Office, Parking, Parks, Pathway, Pedestrian, Prison, Recreation, Residential Retail, Roadway, Sidewalk, Site, Street, Substation, Security, Corrosion Resistant, Wet Location ABSOLUTE PHOTOMETRY IS BASED ON CALIBRATION FACTORS CREATED USING LAB LUMEN STANDARDS IN GONIOPHOTOMETER WITH TEST DISTANCE OF 28.75 FEET		16	GPC-AF-01-LED-E1-SL4-1200-HSS.ies	353	0.9	67
	B	1	EATON - MCGRAW-EDISON (FORMER COOPER LIGHTING)	GLEON-AF-03-LED-E1-T4FT	GALLEON AREA AND ROADWAY LUMINAIRE (3) 70 CRI, 4000K, 1050mA LIGHTSQUARES WITH 16 LEDS EACH AND TYPE IV FORWARD THROW OPTICS Retail, Roadway, Sidewalk, Site, Street, Substation, Security, Corrosion Resistant, Wet Location ABSOLUTE PHOTOMETRY IS BASED ON CALIBRATION FACTORS CREATED USING LAB LUMEN STANDARDS IN GONIOPHOTOMETER WITH TEST DISTANCE OF 28.75 FEET		48	GLEON-AF-03-LED-E1-T4FT.ies	380	0.9	332
	B2	1	EATON - MCGRAW-EDISON (FORMER COOPER LIGHTING)	GPC-AF-02-LED-E1-T4FT	GALLEON PEDESTRIAN LUMINAIRE (2) 70 CRI, 4000K, 1050mA LIGHTSQUARES WITH 16 LEDS EACH AND TYPE IV FORWARD THROW OPTICS Industrial, Landscape, Library, Office, Parking, Parks, Pathway, Pedestrian, Prison, Recreation, Residential Retail, Roadway, Sidewalk, Site, Street, Substation, Security, Corrosion Resistant, Wet Location ABSOLUTE PHOTOMETRY IS BASED ON CALIBRATION FACTORS CREATED USING LAB LUMEN STANDARDS IN GONIOPHOTOMETER WITH TEST DISTANCE OF 28.75 FEET		32	GPC-AF-02-LED-E1-T4FT.ies	390	0.9	339
	D	4	EATON - LUMARK (FORMER COOPER LIGHTING)	XTOR2B-W	CROSSTOUR 18W WALL MOUNT LED	EATON LED 4000K	1	XTOR2B-W.ies	2102	0.9	18.2
	E	2	EATON - LUMARK (FORMER COOPER LIGHTING)	XTOR12B-W	CROSSTOUR 102W WALL MOUNT LED	EATON LED 4000K	1	XTOR12B-W.ies	12536	0.9	102
	F	2	EATON - MCGRAW-EDISON (FORMER COOPER LIGHTING)	GWC-AF-02-LED-E1-T4FT	GALLEON WALL LUMINAIRE (2) 70 CRI, 4000K, 1050mA LIGHTSQUARES WITH 16 LEDS EACH AND TYPE IV FORWARD THROW OPTICS Industrial, Landscape, Library, Office, Parking, Parks, Pathway, Pedestrian, Prison, Recreation, Residential Retail, Roadway, Sidewalk, Site, Street, Substation, Security, Corrosion Resistant, Wet Location ABSOLUTE PHOTOMETRY IS BASED ON CALIBRATION FACTORS CREATED USING LAB LUMEN STANDARDS IN GONIOPHOTOMETER WITH TEST DISTANCE OF 28.75 FEET		32	GWC-AF-02-LED-E1-T4FT.ies	390	0.9	113
	G	1	EATON - Lumark (FORMERLY COOPER LIGHTING)	XTOR1B-W-FLD-KNC	CROSSTOUR 12W FLOOD LED WITH WHITE HOUSING, BRONZE SHIELD AND LENS		1	XTOR1B-W-FLD-KNC.ies	Absolute	0.9	12.2
	H	6	EATON - MCGRAW-EDISON (FORMER COOPER LIGHTING)	GPC-AF-01-LED-E1-SL2-HSS	GALLEON PEDESTRIAN LUMINAIRE (1) 70 CRI, 4000K, 1050mA LIGHTSQUARE WITH 16 LEDS EACH AND TYPE II SPILL LIGHT ELIMINATOR OPTICS WITH HOUSE SIDE SHIELD Industrial, Landscape, Library, Office, Parking, Parks, Pathway, Pedestrian, Prison, Recreation, Residential Retail, Roadway, Sidewalk, Site, Street, Substation, Security, Corrosion Resistant, Wet Location ABSOLUTE PHOTOMETRY IS BASED ON CALIBRATION FACTORS CREATED USING LAB LUMEN STANDARDS IN GONIOPHOTOMETER WITH TEST DISTANCE OF 28.75 FEET		16	GPC-AF-01-LED-E1-SL2-HSS.ies	329	0.9	59

Statistics

Symbol	Avg	Max	Min	Max/Min	Description	Avg/Min
	29 lux	167 lux	1 lux	167.0:1	Behind large building	29.0:1
	17 lux	65 lux	2 lux	32.5:1	Bottom of large building	8.5:1
	21 lux	33 lux	6 lux	5.5:1	End of drive thru	3.5:1
	27 lux	174 lux	0 lux	N/A	Large Parking lot	N/A
	10 lux	51 lux	0 lux	N/A	Middle	N/A
	29 lux	80 lux	10 lux	8.0:1	Parking - Drive Thru Loop	2.9:1
	4 lux	19 lux	0 lux	N/A	Property Line	N/A
	21 lux	35 lux	4 lux	8.8:1	Start of drive thru	5.3:1



2165 Robertson Rd. - 1.3

Designer
JC
Date
2018-12-13
Scale
Not to Scale
Drawing No.
Summary