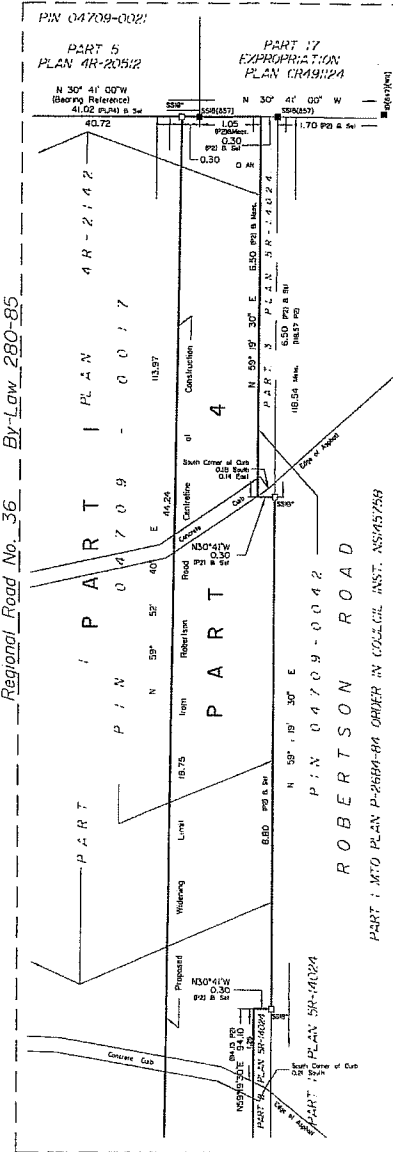


Detail 'B'
Scale 1:50



Detail 'A'
Scale 1:50

1 REQUIRE THIS PLAN TO BE DEPOSITED UNDER THE LAND TITLES ACT
DATE: Aug. 13, 2008
RECEIVED AND DEPOSITED DATE: Aug. 13, 2008
E. H. HARVEY
ON TARIO LAND SURVEYOR
E. H. HARVEY
LAND REGISTRAR FOR THE LAND TITLES DIVISION OF OTTAWA-CARLETON NO. 4.

SCHEDULE			
PART	PART OF LOT	CONCESSION	ALL OF PIN
1			04709-0017
2			
3			
4		2 (Ottawa Front)	
5			04709-0056
6			
7			
8			
9			
10			04709-0018

PLAN OF SURVEY OF
**PART OF LOT 9
CONCESSION 2 (OTTAWA FRONT)
Geographic Township of Nepean
CITY OF OTTAWA**

Surveyed by Annis, O'Sullivan, Vollebakk Ltd.

Scale 1:500
Metric
DISTANCES SHOWN ON THIS PLAN ARE IN METRES AND CAN BE CONVERTED TO FEET BY DIVIDING BY 0.3048

Surveyor's Certificate
1. This survey and plan are correct and in accordance with the Surveyors Act, the Surveyors Act, the Land Titles Act and the regulations made under them.
2. The survey was completed on the 31st day of July, 2008.

Aug. 13, 2008
Date
E. H. HARVEY
Ontario Land Surveyor

- Notes & Legend
- Denotes Survey Monument Planted
 - Survey Monument Found
 - SIB Standard Iron Bar
 - SSIB Short Standard Iron Bar
 - SIBSIB Short Standard Iron Bar (0.3 long)
 - IB Iron Bar
 - CC Cut Cross
 - SW Spike & Washer (in asphalt)
 - SWT Wholes
 - (ADG) Annis, O'Sullivan, Vollebakk Ltd.
 - Mens. Measured
 - CLF Chain Link Fence
 - CRW Concrete Retaining Wall
 - LS Light Standard
 - LP Utility Pole
 - QW Overhead Wires
 - AN Anchor
 - B Bolt
 - (P1) Plan 4R-13296
 - (P2) Plan SR-14204
 - (P3) Plan 4R-10198
 - (P4) Plan 4R-12674
 - (P5) Plan SR-8416

Bearings are astronomic; derived from the astronomic meridian of Plan 4R-13296 shown to be N0°41'00"W true.