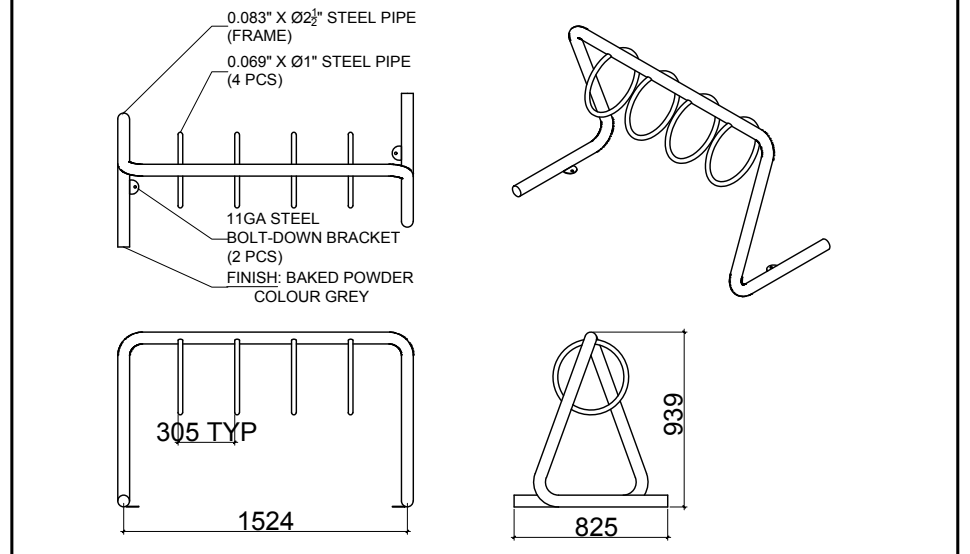
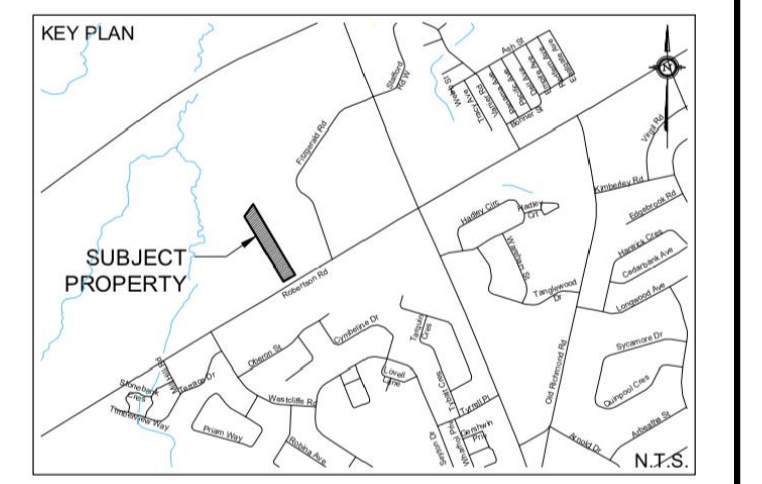


1 TREE CONSERVATION REPORT & LANDSCAPE PLAN  
SCALE 1:400

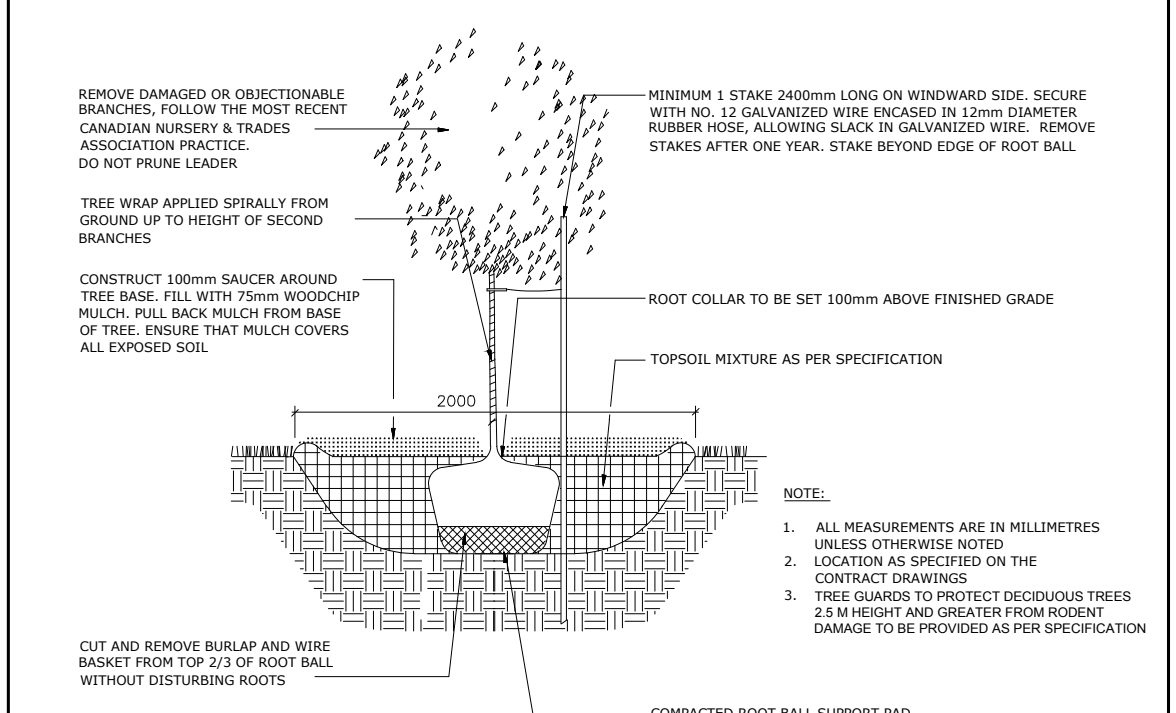
CLIENT:  
**Huntington PROPERTIES**

CONSULTANTS  
ARCHITECTS:  
S. J. LAWRENCE ARCHITECT INC.  
18 DEAKIN STREET, SUITE 206, NEPEAN, ON K2E 8B7  
Tel: (613) 729 7770

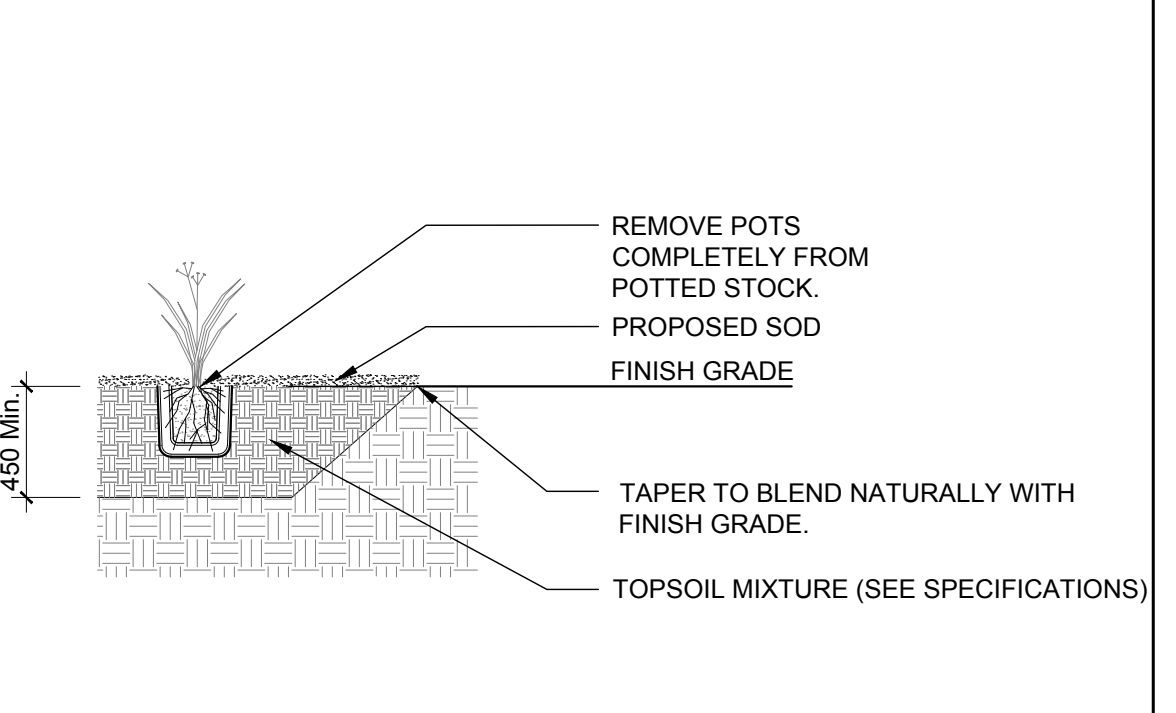
CIVIL ENGINEERS:  
DAVID SCHAEFFER ENGINEERING LTD.  
120 IBER ROAD, STITTSVILLE ON K2S 1E9  
Tel: (613) 836 0856



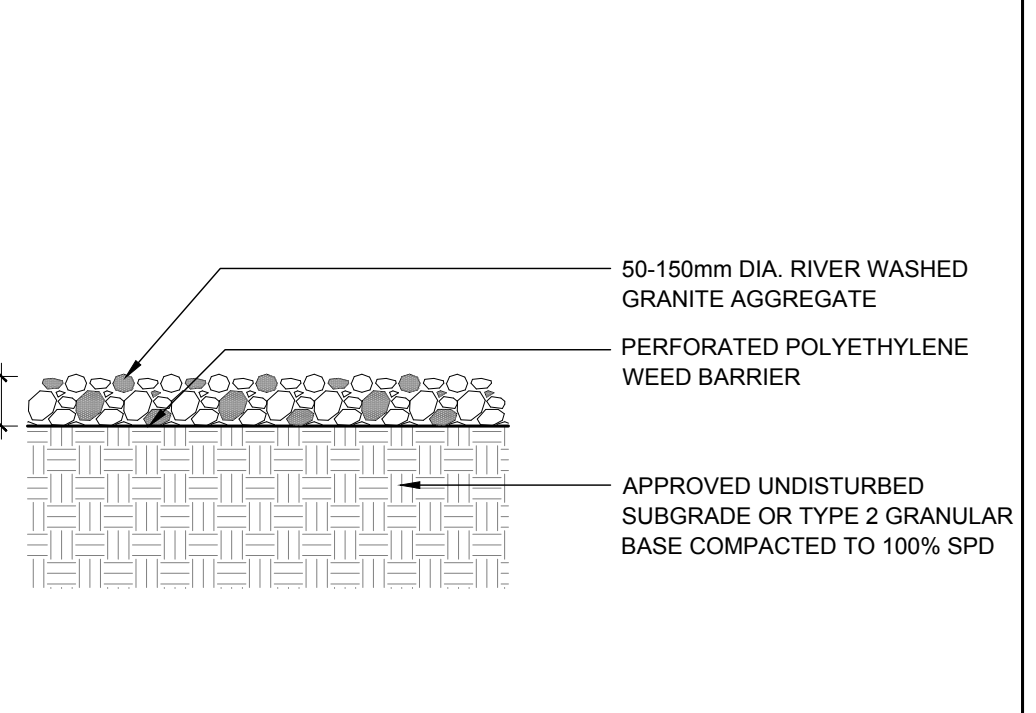
5 PROPOSED 4 RING HAUSER BIKE RACK  
SCALE: NTS



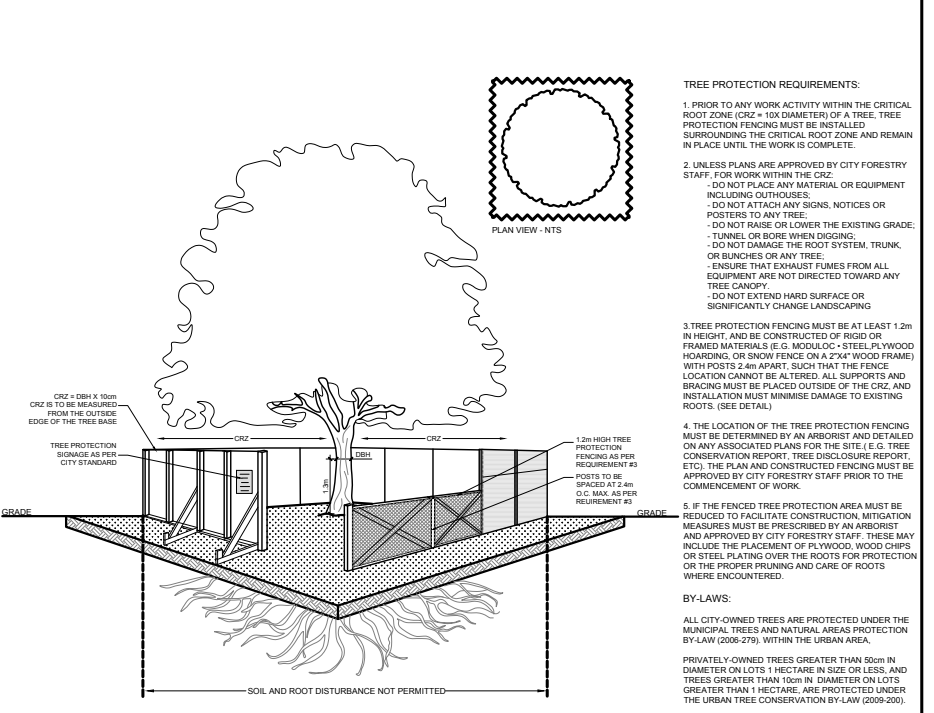
2 DECIDUOUS TREE PLANTING  
SCALE: NTS



3 ORNAMENTAL GRASS PLANTING  
SCALE: NTS



4 PROPOSED RIVERSTONE MULCH  
SCALE: NTS



6 TREE PROTECTION FENCE  
SCALE: NTS

LEGEND

- EXISTING TREE TO REMAIN
- EXISTING TREE TO BE REMOVED
- GROUP OF EXISTING TREES TO BE REMOVED
- PROPOSED ORNAMENTAL GRASSES
- PROPOSED DECIDUOUS TREE
- PROPOSED RIVERSTONE MULCH
- PROPOSED SOD
- PROPOSED GRASS SEED MIXTURE
- PROPOSED WETLAND SEED MIXTURE
- PROPOSED SAWCUT CONCRETE
- PROPOSED PRECAST CONCRETE PAVERS
- PROPOSED TREE PROTECTION FENCE

**GENERAL NOTES:**

- It is the responsibility of the appropriate contractor or official to report any errors, omissions or discrepancies on this plan with actual site conditions to the Landscape Architect before proceeding with construction.
- The contractor is to notify all utility companies and authorities prior to any excavation and ascertain locations of underground services.
- The contractor is to reinstate all areas and items damaged as a result of construction activity.
- The contractor is to comply with all pertinent codes and by-laws.
- The contractor is to maintain a positive surface run-off throughout the entire construction period.
- The Landscape Architect is not responsible for subsurface conditions.
- The contractor is to identify all existing trees to remain on site with the Landscape Architect prior to construction.
- The contractor is to stake the proposed location of all plant material in conjunction with the Landscape Architect prior to excavation.
- Minimum distances for selected deciduous trees are as follows:
  - Building Foundations 7.5m
  - Sidewalks 1.5m
  - Public Streets 2.5m
  - Underground Infrastructure 2.0m
- All trees within 1m of underground utility trenches are to be excavated by hand.
- Remove all protective wrapping from tree trunks after installation.
- Staking of trees shall only be performed if necessary.
- Ensure that mulch is pulled back a min. distance of 75mm from base of tree trunk.

**PROPOSED PLANT LIST**

KEY	QTY	BOTANICAL NAME	COMMON NAME	SIZE	CONDITION	REMARKS
<b>TREES</b>						
JL	2	<i>Syringa reticulata</i>	Japanese Tree Lilac	60mm ø	B&B	Single Leader
RM	1	<i>Acer rubrum</i>	Red Maple	60mm ø	B&B	Single Leader
SI	1	<i>Acer saccharinum</i>	Silver Maple	60mm ø	B&B	Single Leader
<b>ORNAMENTAL GRASSES</b>						
KF	87	<i>Calamagrostis 'Karl Foerster'</i>	Karl Foerster Grass	250mm pot	Potted	Space 800 mm o.c.
SG	56	<i>Panicum virgatum 'Shenandoah'</i>	Shenandoah Switch Grass	250mm pot	Potted	Space 800 mm o.c.

**EXISTING TREE LIST**

KEY	QTY	BOTANICAL NAME	COMMON NAME	SIZE	CONDITION	REMARKS
<b>TREES</b>						
AN	*	<i>Acer negundo</i>	Manitoba Maple	50-200mm DBH	Good	See Plan
EA	1	<i>Elaeagnus angustifolia</i>	Russian Olive	100-200mm DBH	Dead-Good	See Plan
PG	1	<i>Picea pungens 'Glauca'</i>	Blue Spruce	250mm DBH	Good	See Plan
PD	*	<i>Populus grandidentata</i>	Largetooth Aspen	100-250mm DBH	Good	See Plan
PP	1	<i>Picea pungens</i>	Colorado Spruce	370mm DBH	Good	See Plan
PT	*	<i>Populus tremuloides</i>	Trembling Aspen	100-250mm DBH	Good	See Plan
RC	*	<i>Rhamnus cathartica</i>	Common Buckthorn	50-100mm DBH	Good	See Plan
RT	*	<i>Rhus typhina</i>	Staghorn Sumac	50-100mm DBH	Good	See Plan
UA	*	<i>Ulmus americana</i>	American Elm	100-250mm DBH	Poor-Good	See Plan
UP	3	<i>Ulmus parvifolia</i>	Chinese Elm	250-300mm DBH	Good	See Plan

\*DENOTES NUMEROUS

No.	Issue	Date	ML	JL	DR	CK
6	REVISED PER CITY COMMENTS	05/26/2021	ML	JL		
5	REVISED PER CITY COMMENTS	03/05/2021	ML	JL		
4	REVISED PER NEW CIVIL DRAWING	02/26/2021	ML	JL		
3	REVISED PER NEW SITE PLAN	02/09/2021	ML	JL		
2	REVISED PER CITY COMMENTS	12/15/2020	ML	JL		
1	ISSUED FOR SITE PLAN APPLICATION	12/21/2018	ML	JL		

**JAMES B. LENNOX & ASSOCIATES INC.**  
LANDSCAPE ARCHITECTS  
3332 CARLING AVE OTTAWA, ONTARIO K2H 5A8  
Tel: (613) 722-5168 Fax: (866) 343-3942

PROJECT  
ROBERTSON RD. DEVELOPMENT  
2165 ROBERTSON ROAD, OTTAWA ON

DRAWING  
TREE CONSERVATION REPORT & LANDSCAPE PLAN

SCALE  
AS SHOWN

START DATE  
NOVEMBER 2018

PROJECT NO.  
19HUNT1908

PROJECT NORTH

DRAWING NO.  
**L.1**

PLOT SIZE ARCH-D

D07-12-18-0205