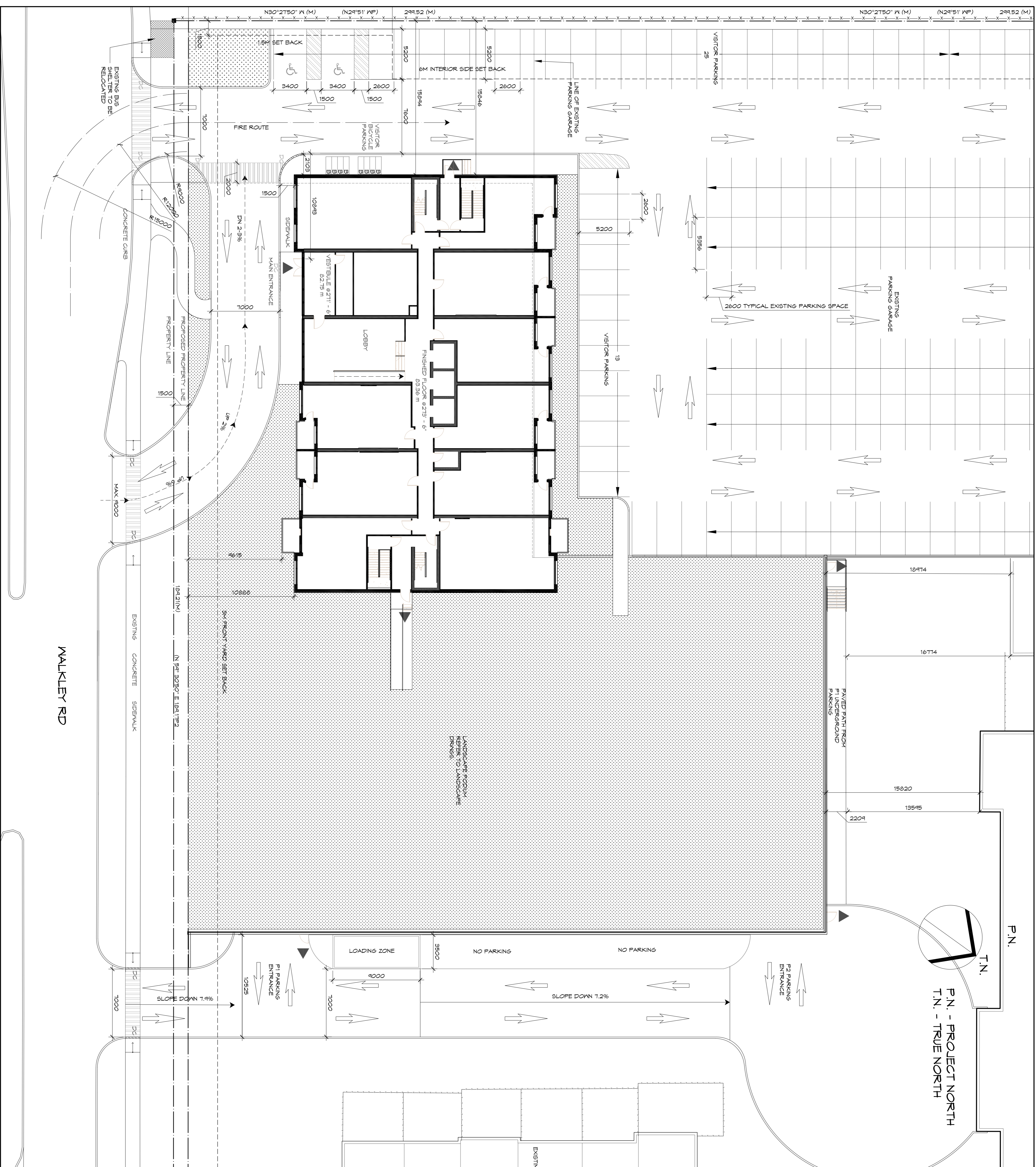


| SITE PLAN LEGEND |                                     |
|------------------|-------------------------------------|
| SYMBOL           | DESCRIPTION                         |
| ---              | PROPERTY LINE                       |
| ---              | SETBACK LINE                        |
| ---              | NEW CURB                            |
| ---              | NEW DEPRESSED CURB                  |
| ▲                | SITE / BUILDING ENTRANCE            |
| ○                | LAMP STANDARD                       |
| ○                | BOLLARD                             |
| ⊥                | ACCESSIBLE PARKING SIGN             |
| ⊥                | FIRE ROUTE SIGN                     |
| ⊥                | ELECTRIC CAR CHARGING STATION       |
| ♿                | ACCESSIBLE PARKING SPACE            |
| □                | STANDARD PARKING SPACE (2.6 X 5.2M) |
| □                | BICYCLE PARKING SPACE (0.6 X 1.5M)  |
| ▨                | LANDSCAPED AREA                     |
| ▨                | PAINTED LINES                       |
| ▨                | NEW 2M HIGH PRIVACY WOOD FENCE      |
| ▨                | EARTH BIN SYSTEM WASTE CONTAINER    |



P.N.  
T.N.  
P.N. - PROJECT NORTH  
T.N. - TRUE NORTH



LS GP Inc.  
2193 Arch Street, Ottawa,  
Ontario.

Key Plan:  
P.N. = TRUE NORTH  
T.N. = PROJECT NORTH

|   |          |
|---|----------|
| Issued for Site Plan Application Revision | 07/23/19 |
| Issued for Site Plan Application          | 04/30/19 |
| Issued for Coordination                   | 01/14/19 |
| ISSUE:                                    | DATE:    |
| Prime consultant:                         |          |
| Expert/Consult:                           |          |

**DREDGE LEAHY**  
100-25 Holland Ave  
OTTAWA, ON K1Y 4R9  
613.724.9865  
dl-arch.ca

Sub Consultant:  
Expert - Consultant:

Project:  
Walkley Road  
Apartments  
2270 Walkley Road, Ottawa, ON

|               |                     |
|---------------|---------------------|
| Drawn by:     | Scale:              |
| Designed by:  | Echelle:            |
| Designed for: | Date:               |
| MD            | 01/15/19            |
| Approved for: | Client Project No.: |
| MD            | No. of Project:     |
|               | 1454                |
| Sheet No.:    | No. de la feuille:  |
| A1            |                     |

ONTARIO ASSOCIATION OF ARCHITECTS  
MEMBER LICENSE 4988