



# 2145 WALKLEY ROAD

2145 WALKLEY ROAD, OTTAWA, ON  
PROJECT NO. 2019-02

## DRAWING CONTENTS

### LANDSCAPE

CSW Landscape Architects Limited	
L 1.1	LANDSCAPE DRAWINGS
L 2.1	LANDSCAPE DETAILS
L 2.2	LANDSCAPE DETAILS

RE-ISSUED FOR: SITE PLAN APPROVAL, JULY 18, 2025



Landscape Architecture  
Urban Design  
Site Planning  
Recreation and Park Planning  
Project Management

319 McRae Avenue, Suite 502, Ottawa, Ontario K1Z 0B9  
Tel: (613) 729-4536 Fax: (855) 736-9161



PLANT\_SCHEDULE

CODE	BOTANICAL / COMMON NAME	SIZE	CONTAINER	QTY	SPACING
TREES					
AR	Acer rubrum 'Autumn Radiance' / Autumn Radiance Red Maple	70mm Cal.	W.B / B&B	3	
AC	Amelanchier canadensis / Canadian Serviceberry	70mm Cal.	W.B / B&B	2	
CO	Celtis occidentalis / Common Hackberry	70mm Cal.	W.B / B&B	3	
CA	Cornus alternifolia / Pagoda Dogwood	50mm Cal.	W.B / B&B	4	
GB	Ginkgo biloba / Maidenhair Tree	70mm Cal.	W.B / B&B	2	
GT	Gleditsia triacanthos / Honey Locust	70mm Cal.	W.B / B&B	1	
GD	Gymnocladus dioica / Kentucky Coffeetree	70mm Cal.	W.B / B&B	2	
QM	Quercus macrocarpa / Burr Oak	70mm Cal.	W.B / B&B	3	
QR	Quercus rubra / Northern Red Oak	70mm Cal.	W.B / B&B	2	
OV	Ostrya virginiana / American Hophornbeam	70mm Cal.	W.B / B&B	2	
PG	Picea glauca / White Spruce	70mm Cal.	W.B / B&B	3	
PS	Pinus strobus / White Pine	70mm Cal.	W.B / B&B	2	
SHRUBS					
Ch	Clethra alnifolia 'Hummingbird' / Hummingbird Summersweet	5 gal.	Pot		600mm O.C
Ha	Hydrangea arborescens 'Abetwo' / Incredible® Hydrangea	5 gal.	Pot		600mm O.C
Ps	Physocarpus opulifolius 'Seward' / Summer Wine® Ninebark	5 gal.	Pot		600mm O.C
Vc	Viburnum opulus 'Compactum' / Compact European Cranberrybush	5 gal.	Pot		600mm O.C
PERENNIALS					
ck	Calamagrostis x acutiflora 'Karl Foerster' / Karl Foerster Feather Reed Grass	1 gal.	Pot		600mm O.C
dt	Deschampsia cespitosa / Tufted Hair Grass	1 gal.	Pot		600mm O.C
ep	Echinacea purpurea 'Primadonna White' / Primadonna White Coneflower	1 gal.	Pot		600mm O.C
hb	Hemerocallis x 'Bela Lugosi' / Bela Lugosi Daylily	1 gal.	Pot		600mm O.C
rh	Rudbeckia hirta / Black-eyed Susan	1 gal.	Pot		600mm O.C
ss	Schizachyrium scoparium / Little Bluestem	1 gal.	Pot		600mm O.C
sa	Sedum spectabile 'Autumn Joy' / Autumn Joy Stonecrop	1 gal.	Pot		600mm O.C
sb	Stachys byzantina / Lamb's Ear	1 gal.	Pot		600mm O.C

PROJECTED 40 YEAR TREE CANOPY COVER				
TREE SIZE	40 YR CANOPY DIA	AREA COVER M2	QUANTITY	TOTAL AREA
SMALL DECIDUOUS	5.5M DIA	23.76	4	95.04
MEDIUM DECIDUOUS	10M DIA	78.54	7	549.78
LARGE DECIDUOUS	15M DIA	176.7	13	2,297.10
CONIFER	5M DIA	19.63	5	98.15
EXISTING TREES				0.00
Total Canopy Cover Area				3,040.07
Total Site Area				8,130.00
Total % TREE CANOPY COVER (40 YEAR)				37.39%

Tree Type / Size	Single Tree Soil Volume (m3)	Multiple Tree Soil Volume (m3/tree)
Ornamental	15	9
Columnar	4	9
Small	20	12
Medium	25	15
Large	30	18
Conifer	25	15

Key Plan	
	SHRUB/PERENNIAL PLANT BED
	SOD
	ARTIFICIAL TURF
	CAST IN PLACE CONCRETE
	CONCRETE UNIT PAVERS
	MAINTENANCE EDGE
	PROPOSED TREES
	EXISTING TREES
	PROPOSED SITE FURNITURE
	OUTDOOR KITCHEN - BBQ'S

No.	Revision	Date
3	RE-ISSUED FOR SPA	2025-07-18
2	RE-ISSUED FOR SPA	2025-03-25
1	ISSUED FOR SPA	2024-12-18

North:	Stamp:

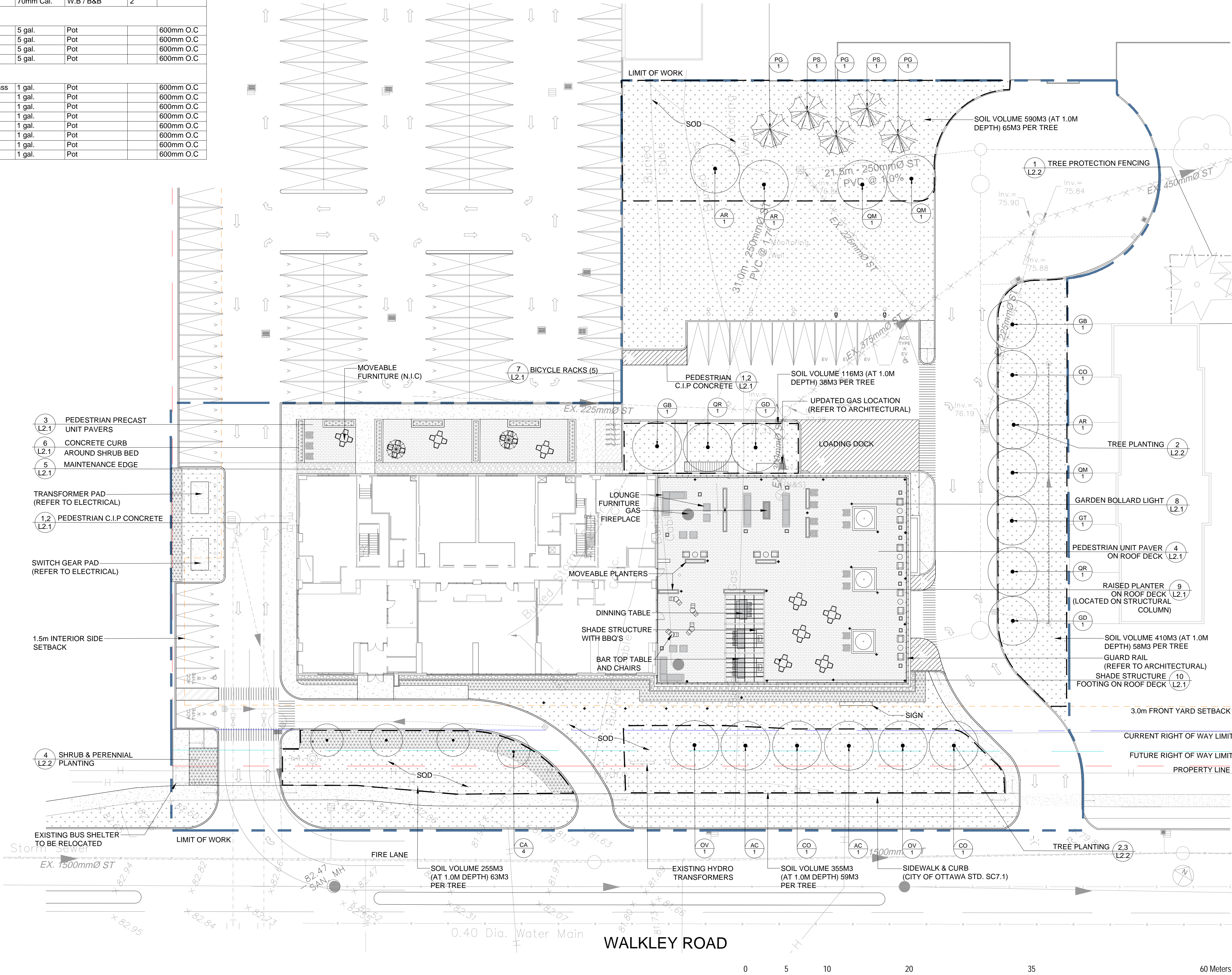
	Landscape Architecture
	Urban Design
	Site Planning
	Recreation and Park Planning
	Project Management
319 McRae Avenue, Suite 502, Ottawa, Ontario, K1Z 0B9 Tel: (613) 729-4536	

- All measurements in millimeters unless specified otherwise. Do not scale drawing. All drawings to be read in conjunction with written specifications.
- Copyright reserved. This drawing is the exclusive property of CSW Landscape Architects Ltd. and shall not be used without the consent thereof.
- This Drawing may not be used for construction until signed by the landscape architect. It is the responsibility of the contractor to:
  - check and verify all dimensions on site;
  - report all errors and/or omissions to the landscape architect;
  - comply with all pertinent codes and by-laws;
  - check and verify locations of all underground services with all local utilities prior to any digging.

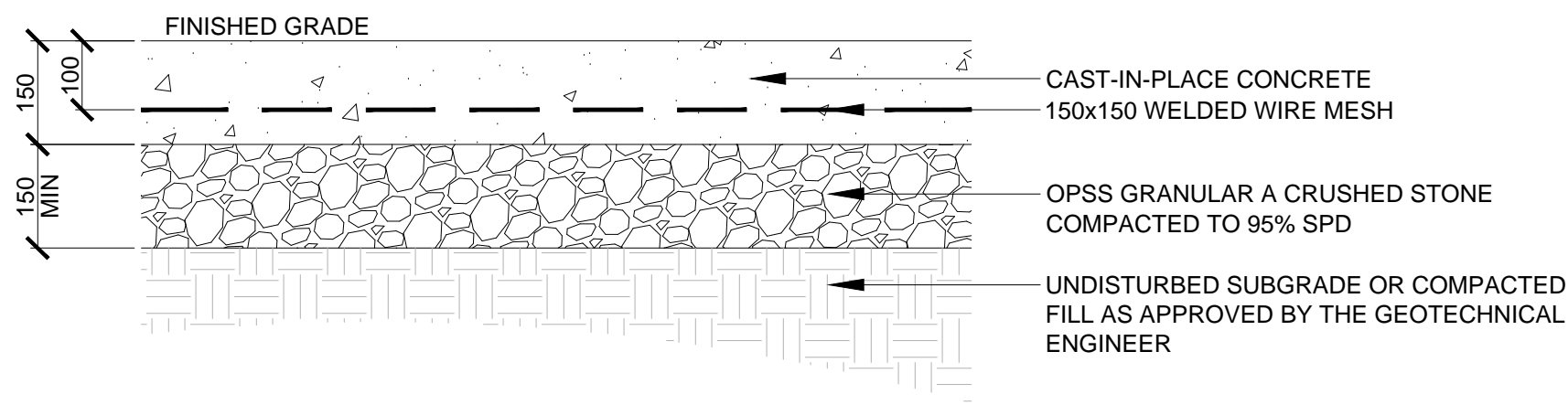
Project:	URBANDALE 2145 WALKLEY ROAD  2145 Walkley Road OTTAWA, ONTARIO
----------	--

Drawing:	LANDSCAPE PLAN
----------	----------------

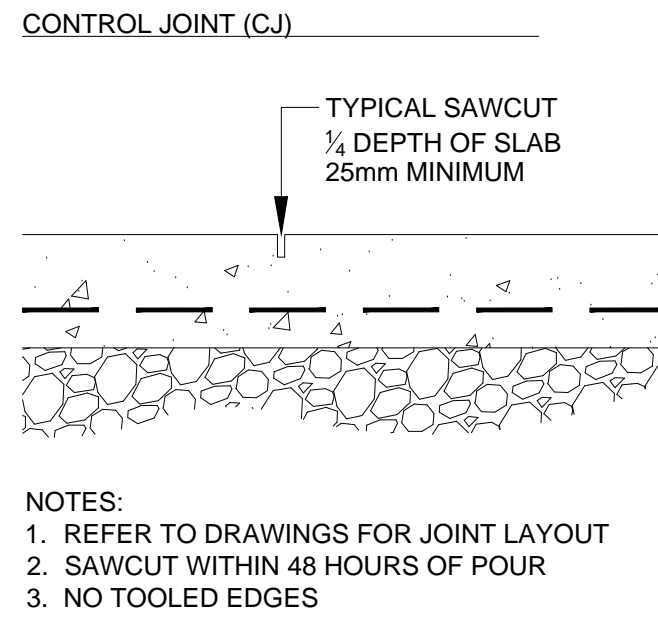
Scale:	Date:
1:250	2025-03-18
Design By:	Drawn By:
AB	AB
Project Number:	Sheet Number:
2019-02	L 1.1



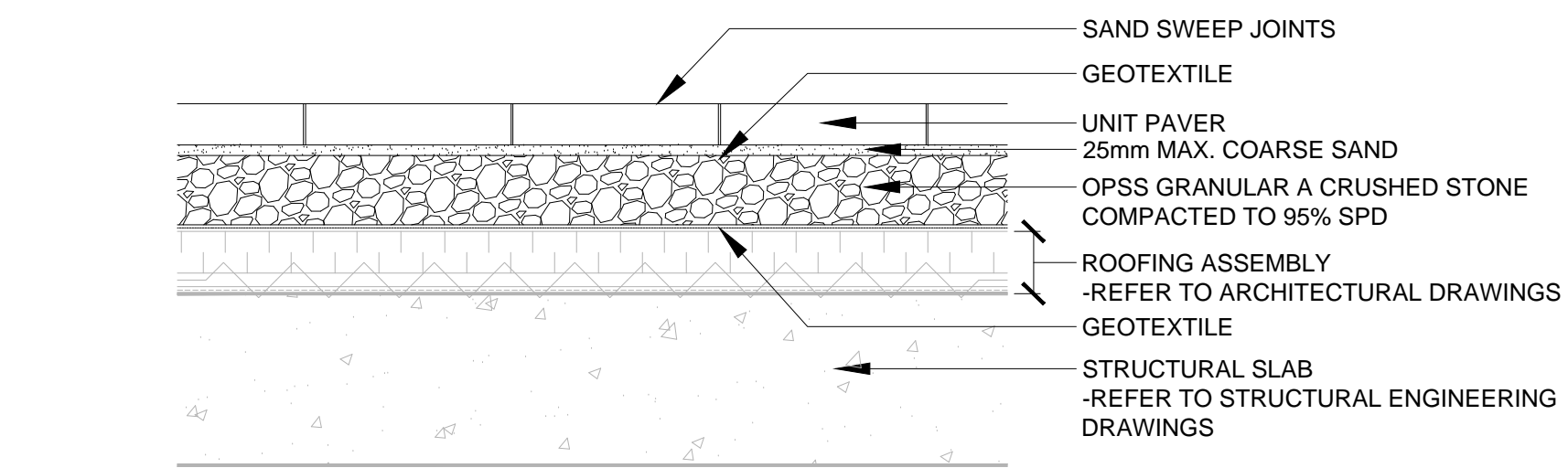
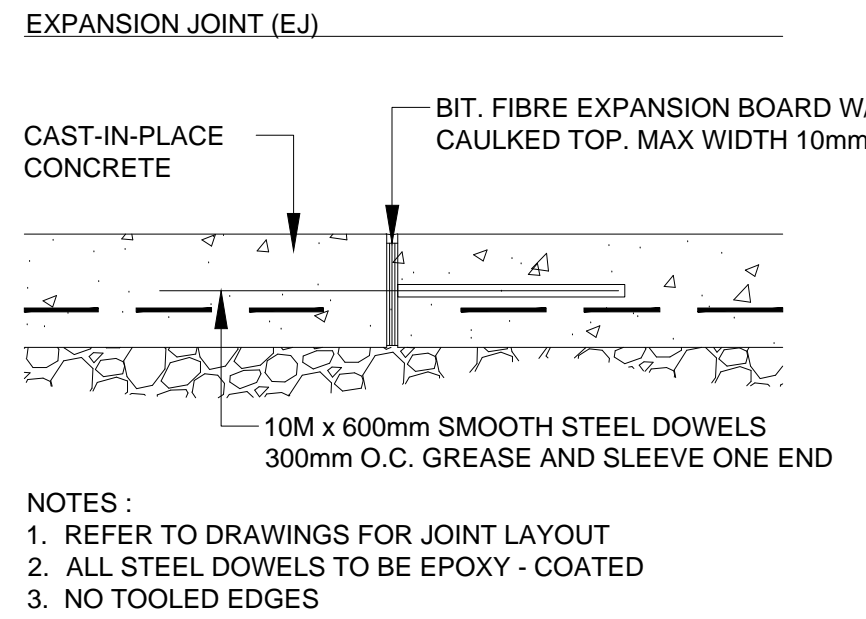




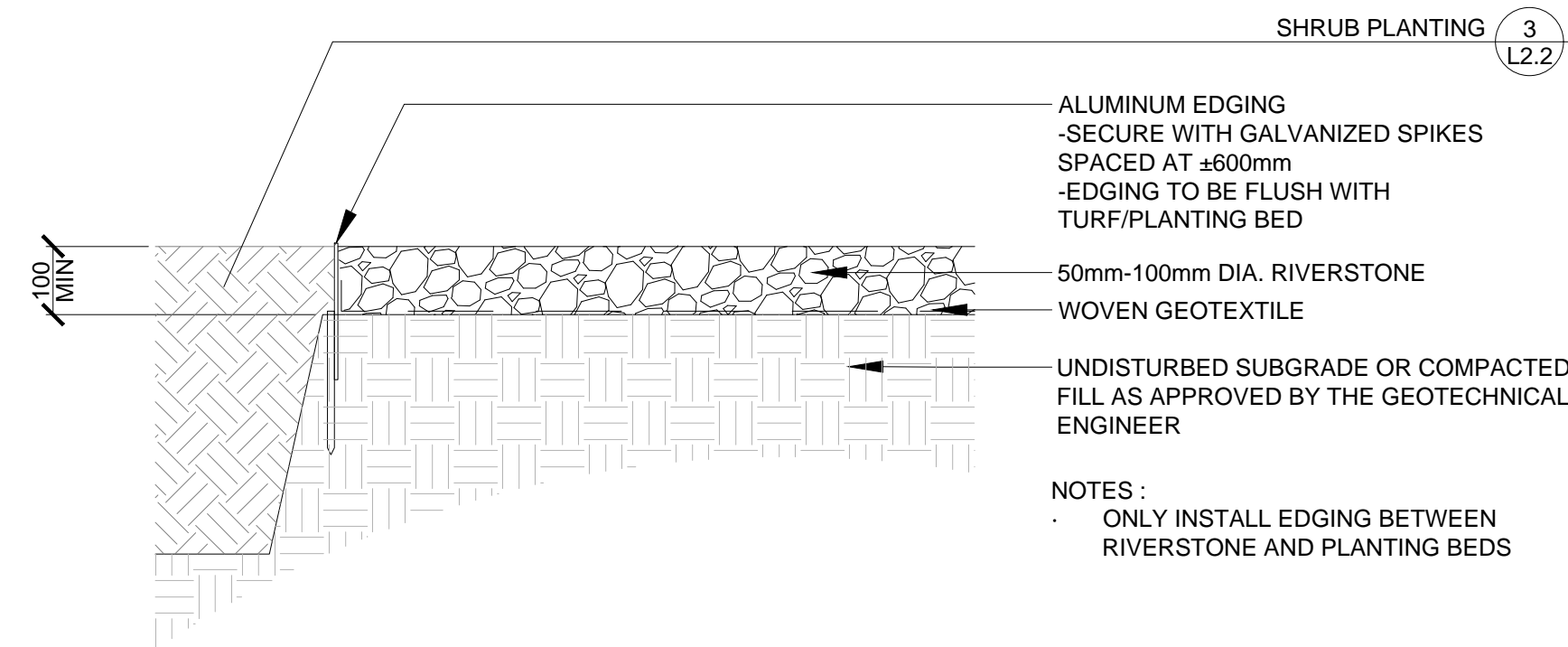
1 PEDESTRIAN C.I.P CONCRETE Scale: 1:10



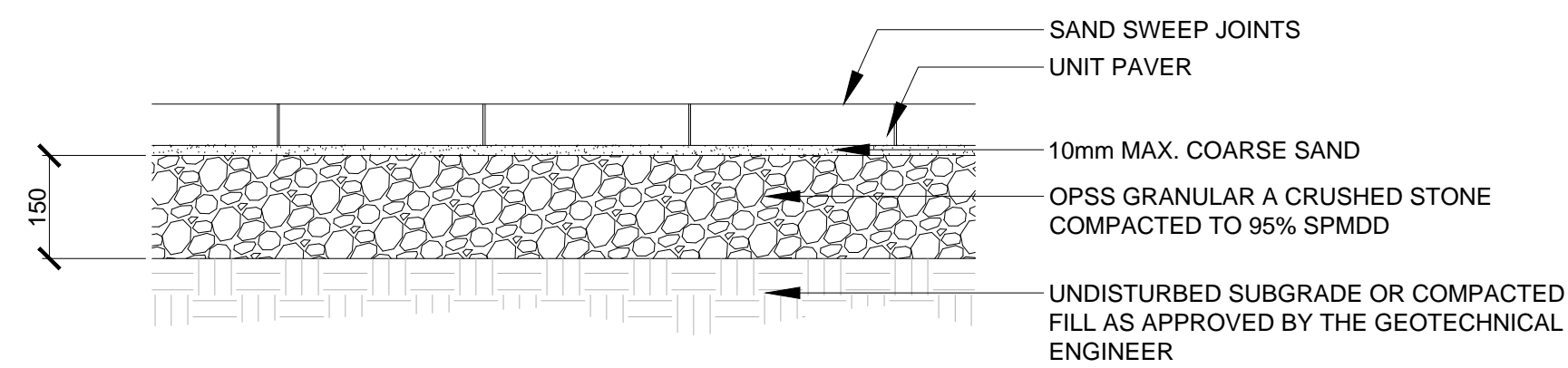
2 CONCRETE JOINTING Scale: 1:10



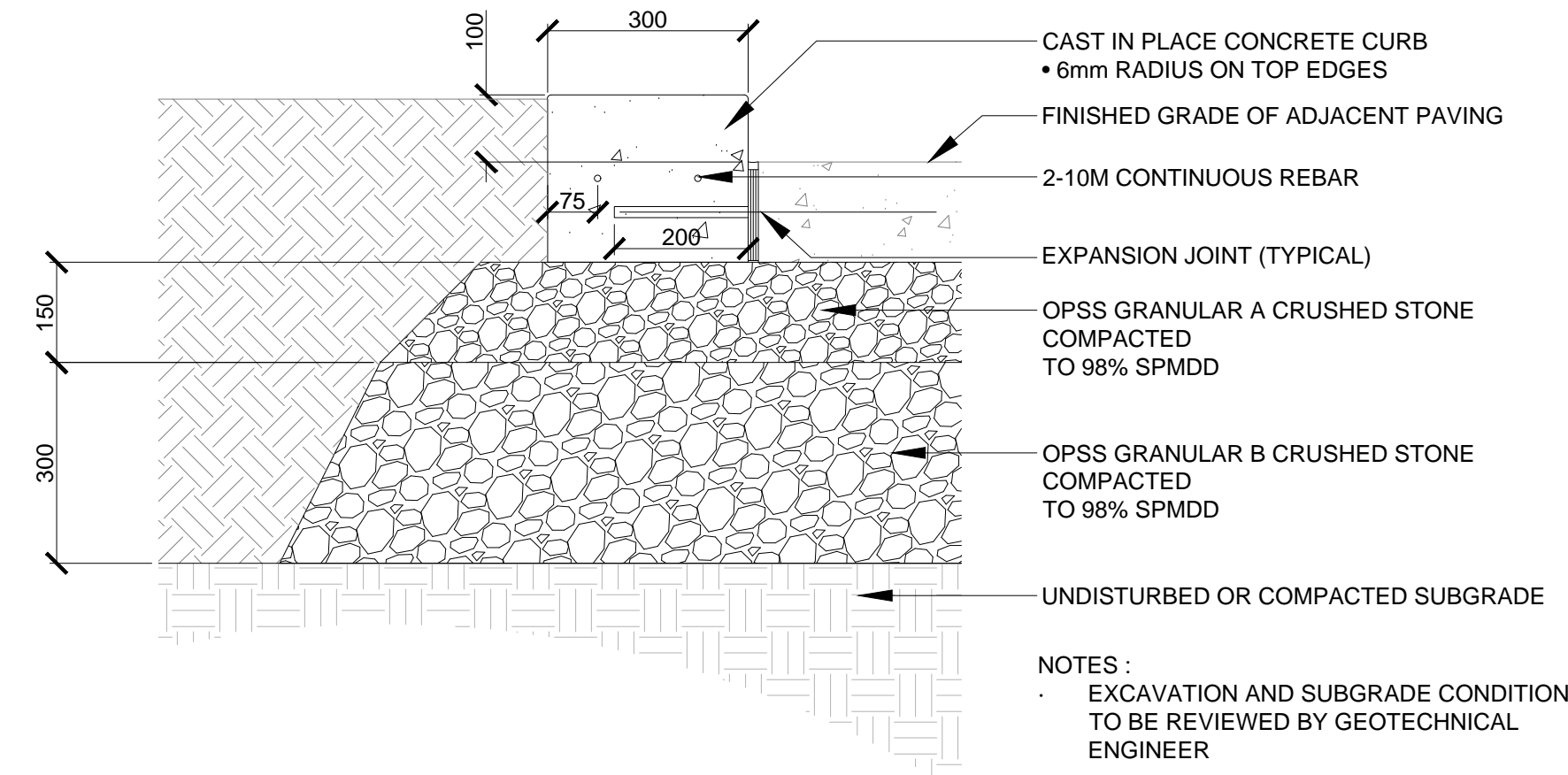
4 PRECAST UNIT PAVERS ON ROOF DECK Scale: 1:10



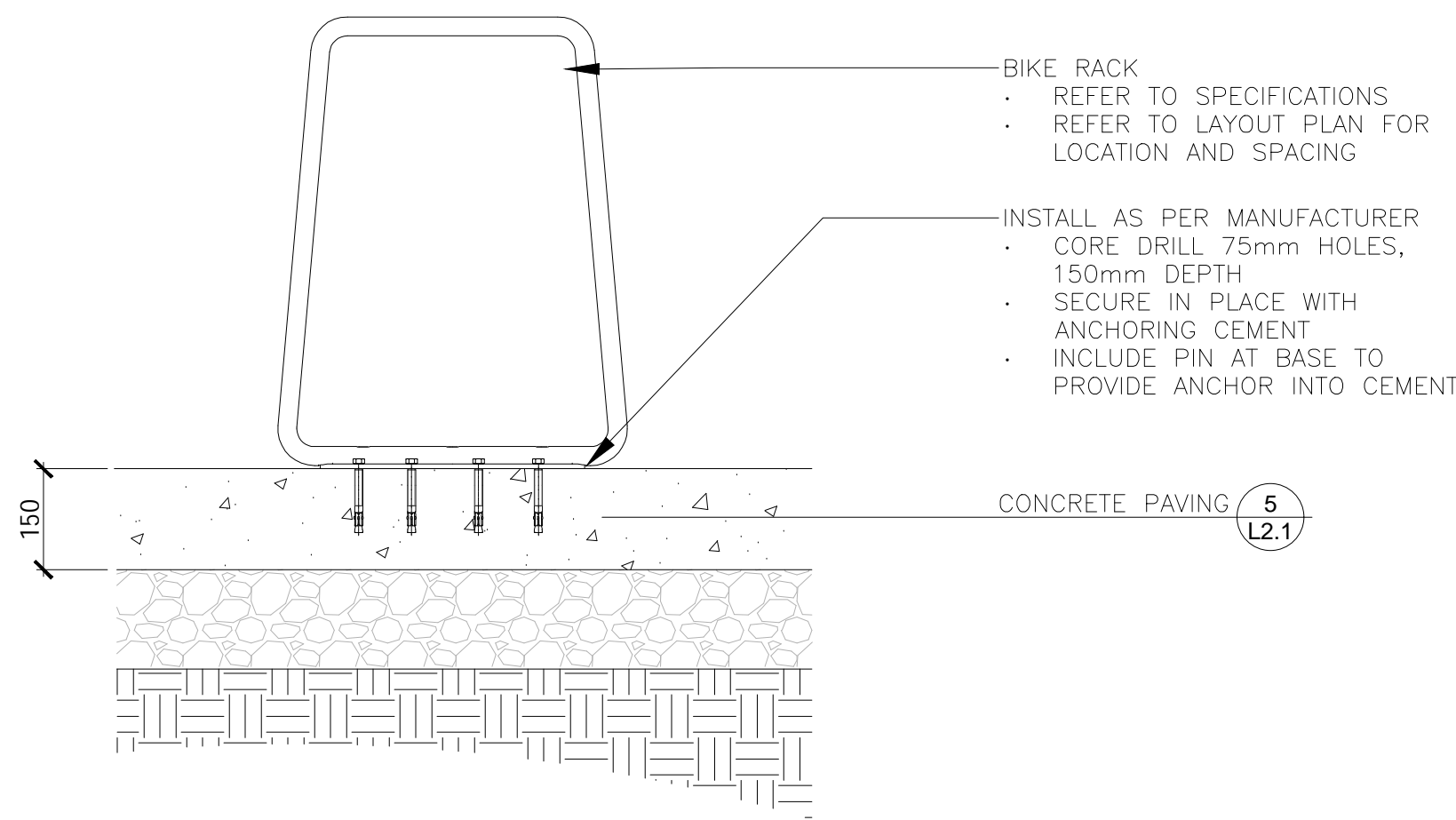
5 MAINTENANCE EDGE Scale: 1:10



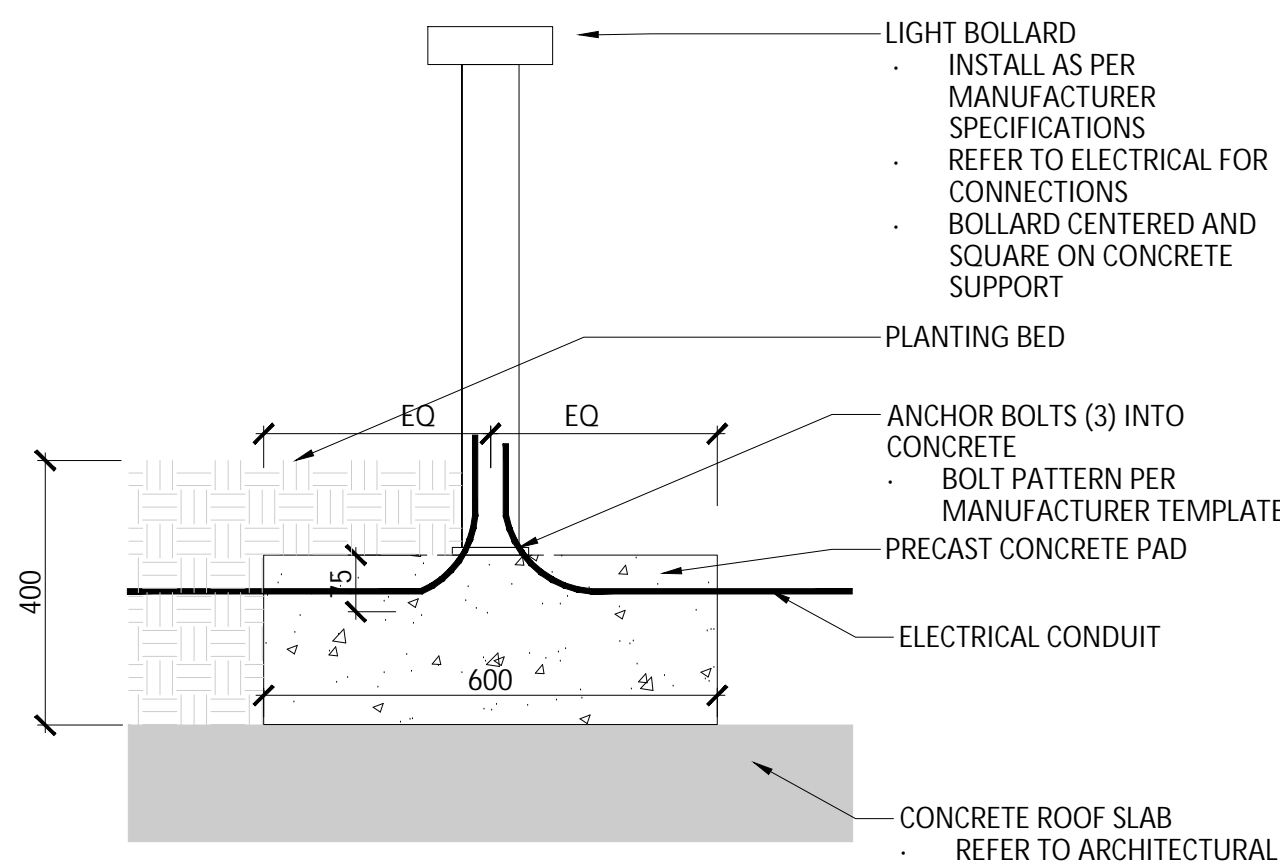
3 PEDESTRIAN PRECAST UNIT PAVERS Scale: 1:10



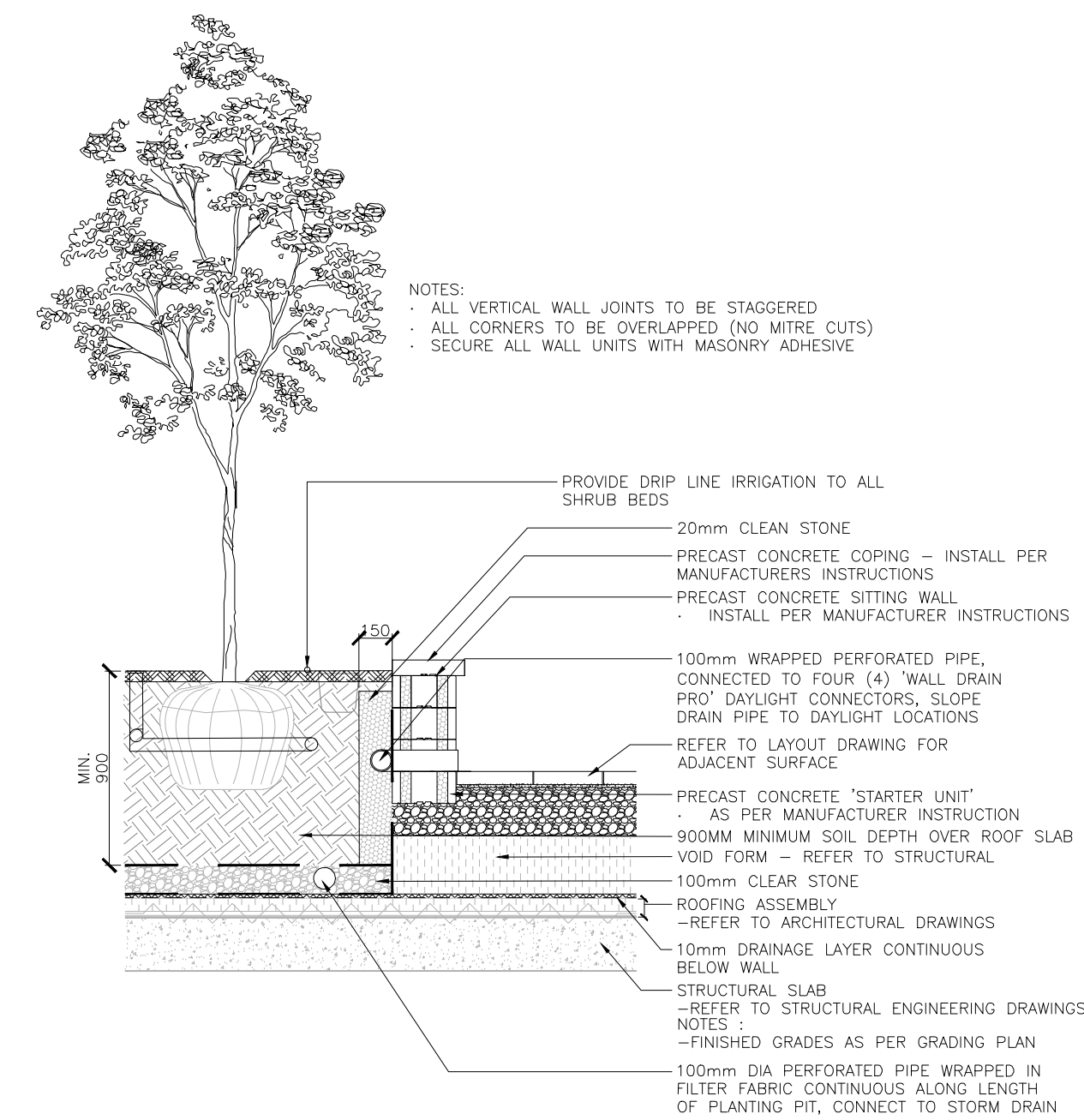
6 CONCRETE CURB AROUND SHRUB BED Scale: 1:10



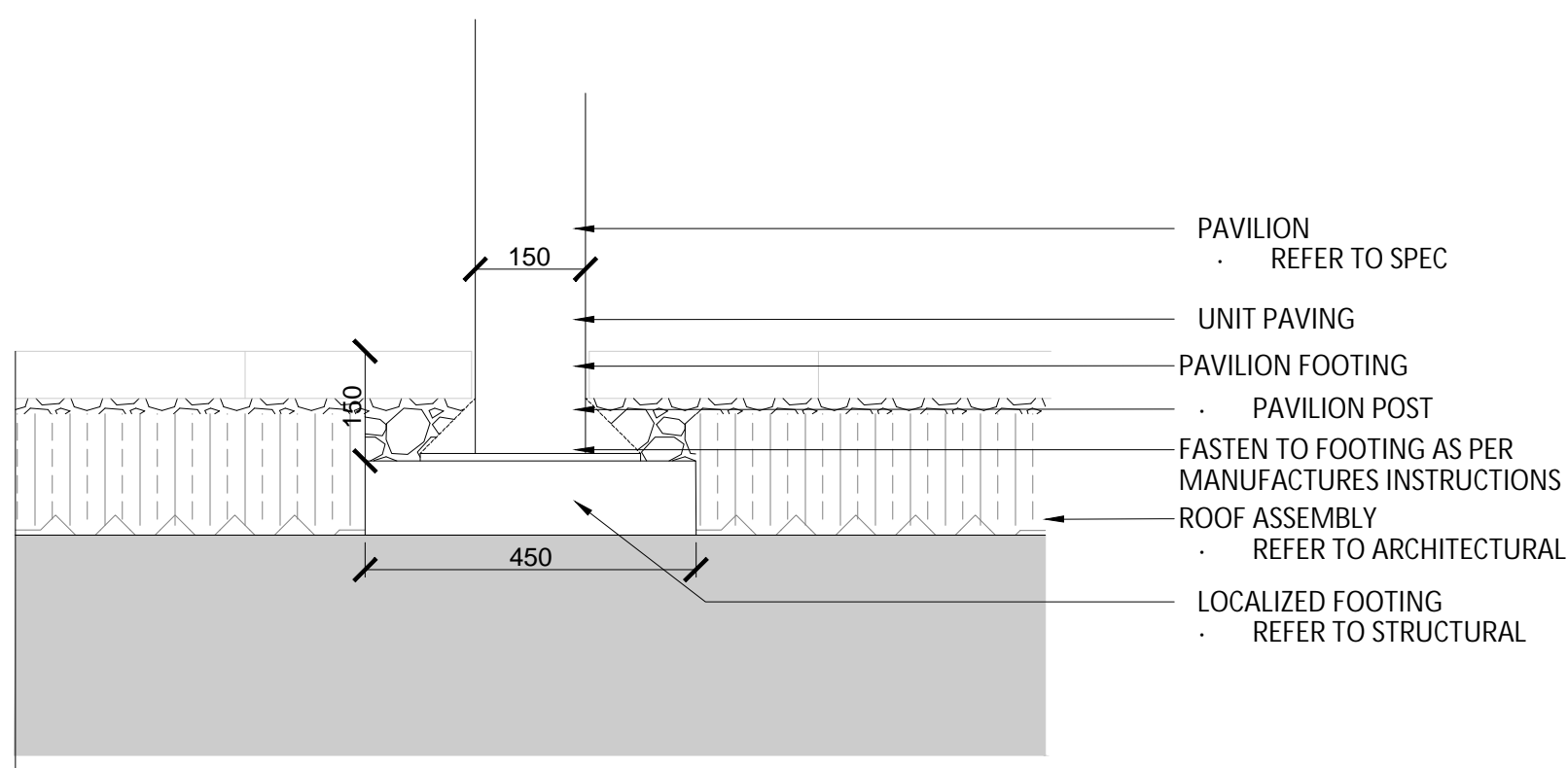
7 BICYCLE RACK Scale: 1:10



8 GARDEN BOLLARD LIGHT Scale: 1:10



9 RAISED PLANTER ON ROOF DECK Scale: 1:10



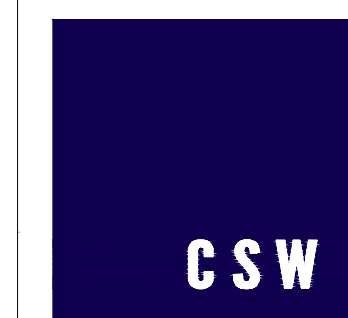
10 SHADE STRCUTURE FOOTING Scale: 1:10

Key Plan

2	RE-ISSUED FOR SPA	2025-07-18
1	RE-ISSUED FOR SPA	2025-03-25
No.	Revision	Date

North:

Stamp:



Landscape Architecture  
Urban Design  
Site Planning  
Recreation and Park Planning  
Project Management

319 McRae Avenue, Suite 502, Ottawa, Ontario, K1Z 0B9  
Tel: (613) 729-4536

- All measurements in millimeters unless specified otherwise. Do not scale drawing. All drawings to be read in conjunction with written specifications.
- Copyright reserved. This drawing is the exclusive property of CSW Landscape Architects Ltd. and shall not be used without the consent thereof.
- This Drawing may not be used for construction until signed by the landscape architect. It is the responsibility of the contractor to:
  - check and verify all dimensions on site;
  - report all errors and/or omissions to the landscape architect;
  - comply with all pertinent codes and by-laws;
  - check and verify locations of all underground services with all local utilities prior to any digging.

Project:

URBANDALE  
2145 WALKLEY ROAD

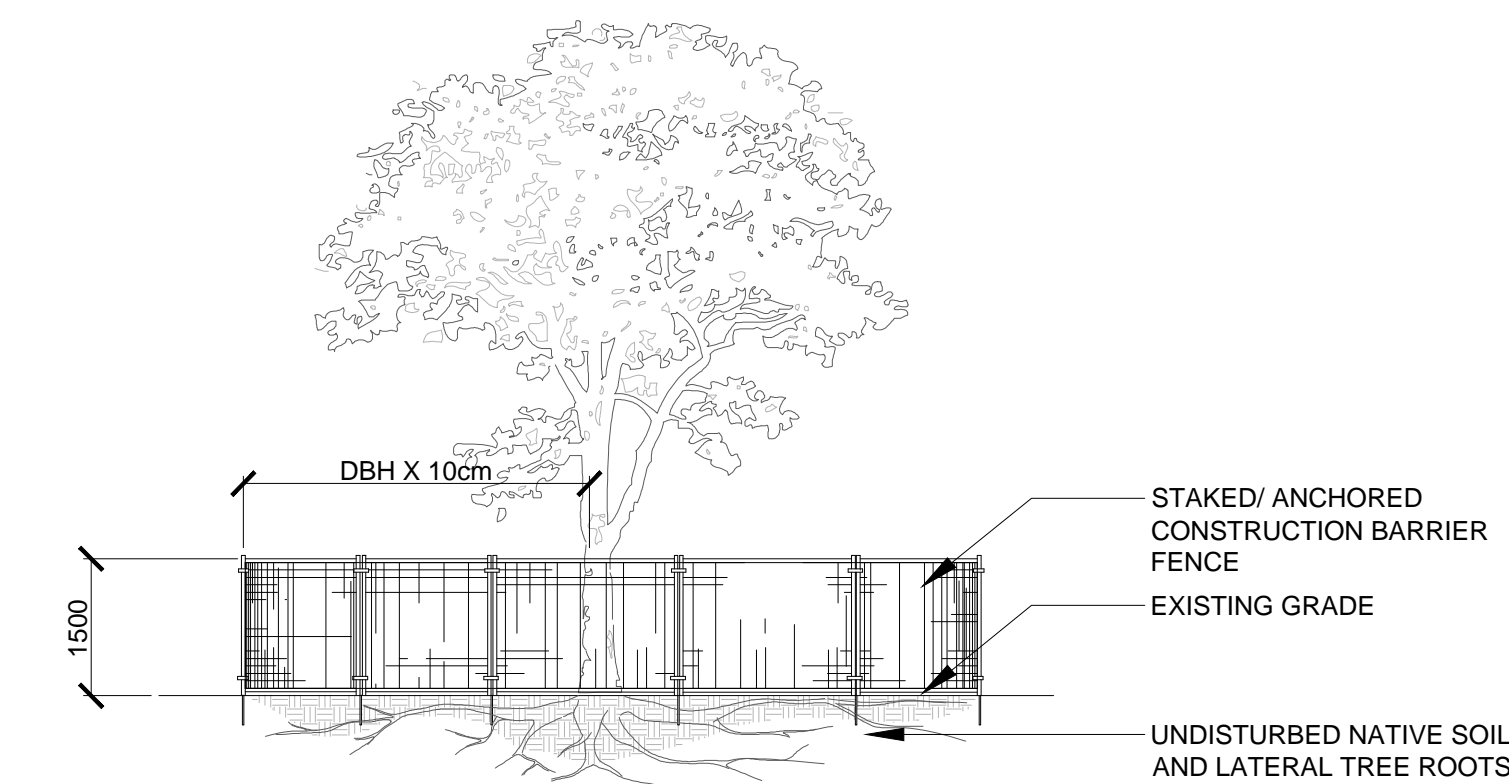
2145 Walkley Road  
OTTAWA., ONTARIO

Drawing:

LANDSCAPE  
HARDSCAPE DETAILS

Scale:	AS NOTED	Date:	2025-03-18
Design By:	AB	Drawn By:	AB
Project Number:	2019-02	Sheet Number:	L 2.1



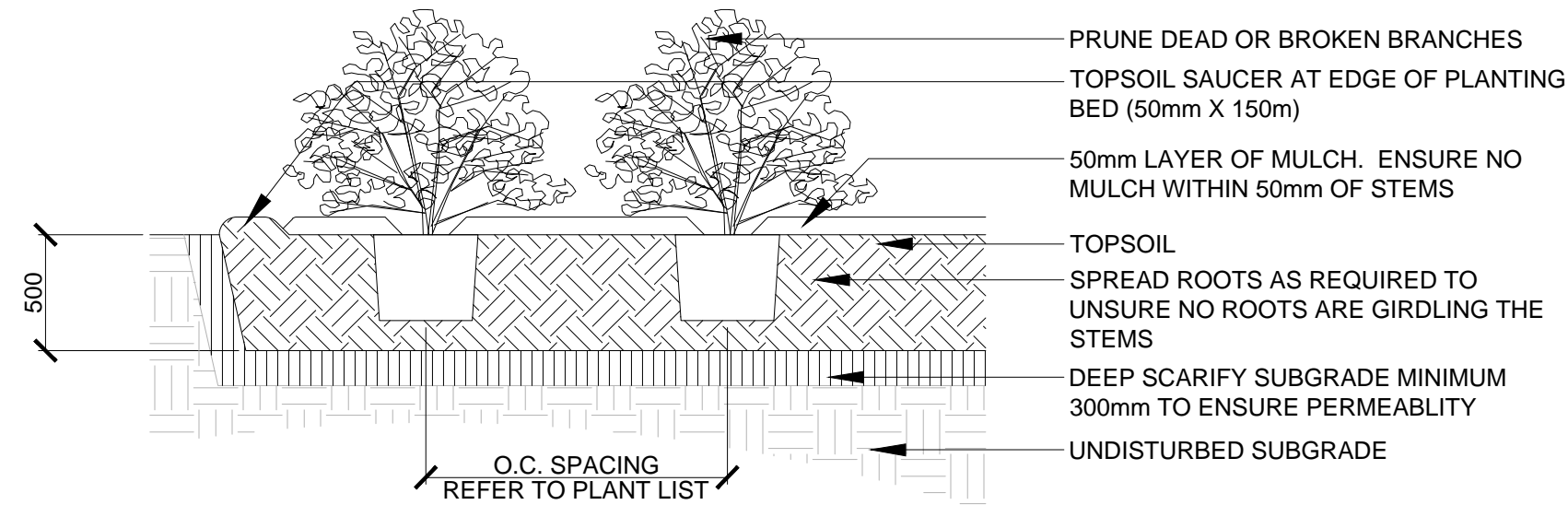


- NOTES:
- THE FOLLOWING PROTECTION MEASURES MUST BE IMPLEMENTED FOR RETAINED TREES, BOTH ON SITE AND ADJACENT SITES, PRIOR TO ANY TREE REMOVAL OR SITE WORKS AND MAINTAINED FOR THE DURATION OF CONSTRUCTION ON SITE.
1. UNDER THE GUIDANCE OF AN ARBORIST, ERECT A FENCE AT THE CRITICAL ROOT ZONE(CRZ) OF TREES WHERE THE CRZ IS ESTABLISHED AS BEING 10 CENTIMETERS FROM THE TRUNK FOR EVERY CENTIMETER OF TRUNK DIAMETER AT BREAST HEIGHT. THE CRZ IS CALCULATED AS DBH X 10cm.
  2. DO NOT PLACE ANY MATERIAL OR EQUIPMENT WITHIN THE CRZ OF THE TREE
  3. DO NO ATTACH ANY SIGNS NOTICES OR POSTERS TO ANY TREE
  4. DO NOT RAISE OR LOWER THE GRADE WITHIN THE CRZ WITHOUT APPROVAL
  5. TUNNEL OR BORE WHEN DIGGING WITHIN THE CRZ OF A TREE
  6. DO NOT DAMAGE THE ROOT SYSTEM, TRUNK, OR BRANCHES OR ANY TREE
  7. ENSURE THAT EXHAUST FUMES FROM ALL EQUIPMENT ARE NOT DIRECTED TOWARDS ANY TREE CANOPY

1

TREE PROTECTION FENCING

Scale: 1:30

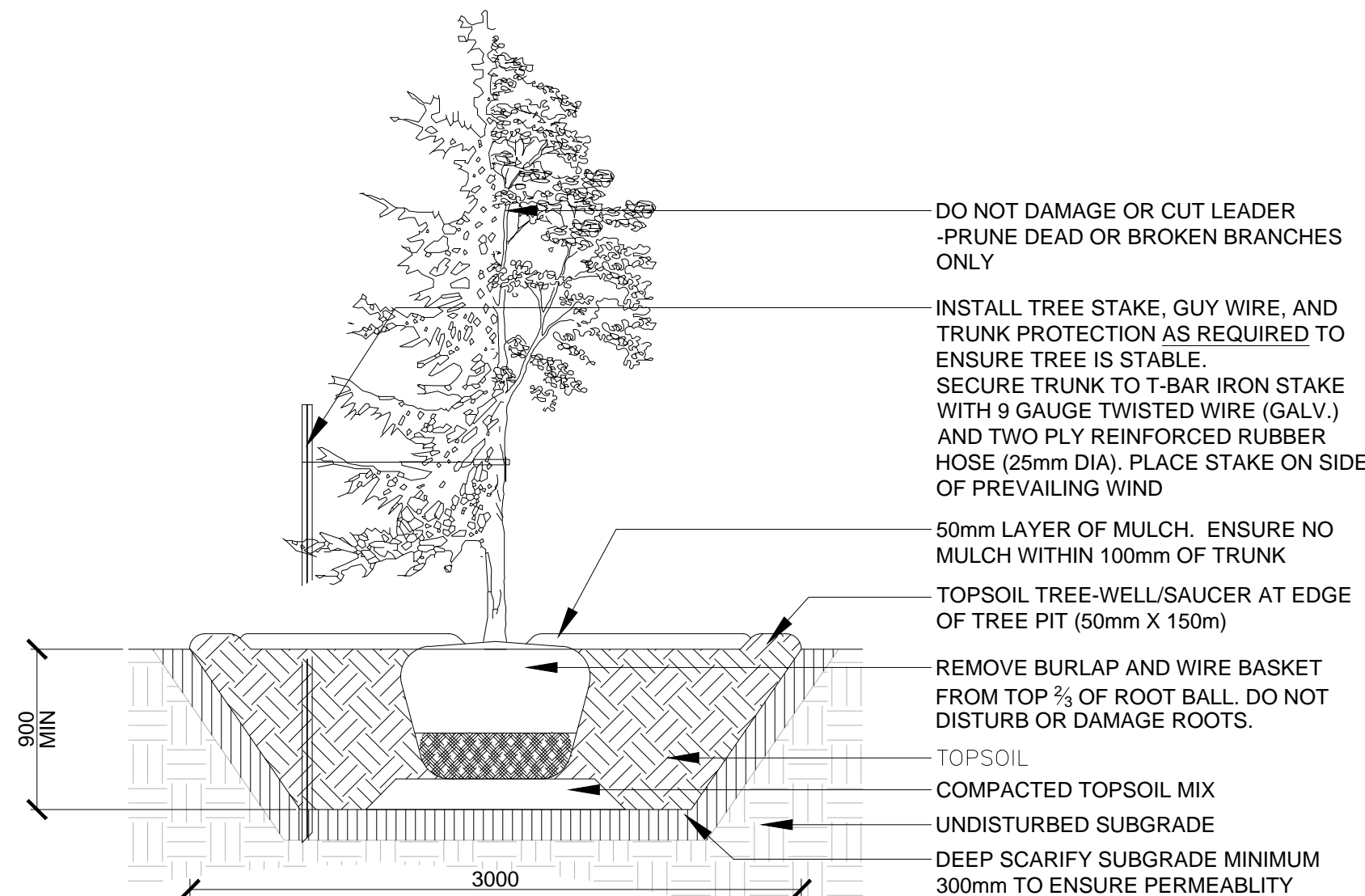


- NOTES:
- TOP OF ROOT BALL TO RETAIN SAME ELEVATION AS GROWING CONDITIONS

4

SHRUB/PERENNIAL PLANTING

Scale: 1:30

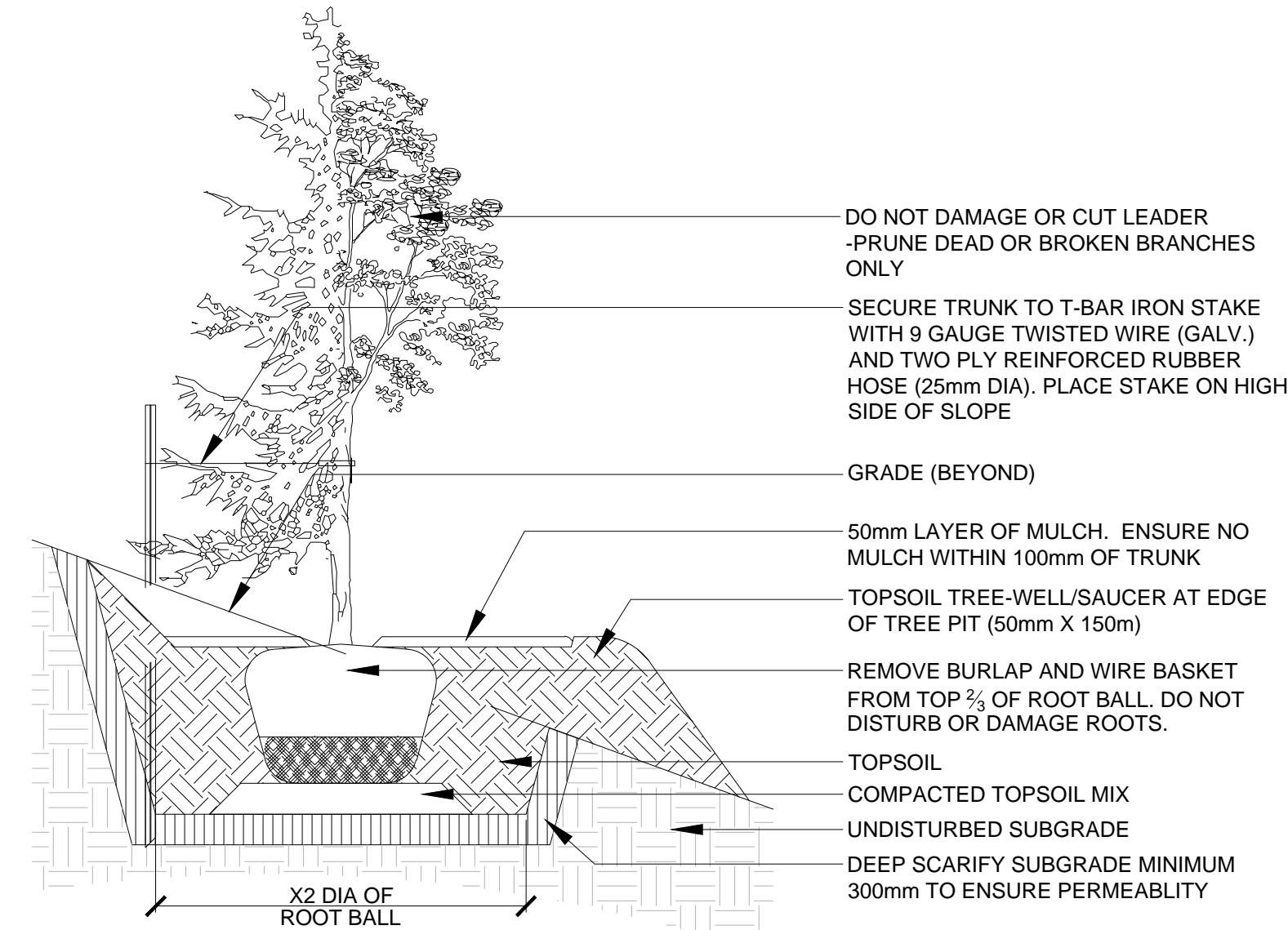


- NOTES:
- TREE STAKES ARE GENERALLY ARE TO BE USED FOR CONDITIONS WHERE THE INSTALLED TREE IS UNSTABLE AND/OR BECOMES UNSTABLE
  - ALLOW 10mm TO 25mm SLACK ON GUY WIRE SUPPORT FOR TREE
  - TOP OF ROOT BALL TO RETAIN SAME ELEVATION AS GROWING CONDITIONS
  - REMOVE STAKES ONE YEAR AFTER INSTALL
  - INSTALL STAKE BEYOND EDGE OF ROOT BALL

2

TREE PLANTING

Scale: 1:30



- NOTES:
- CUT AND FILL SLOPES SHALL BE 3:1 MAXIMUM
  - TOP OF ROOT BALL TO RETAIN SAME ELEVATION AS GROWING CONDITIONS
  - ALLOW 10mm TO 25mm SLACK ON GUY WIRE SUPPORT FOR TREE
  - REMOVE STAKES ONE YEAR AFTER INSTALL
  - INSTALL STAKE BEYOND EDGE OF ROOT BALL

3

SLOPED TREE PLANTING

Scale: 1:30

Key Plan

2	RE-ISSUED FOR SPA	2025-07-18
1	RE-ISSUED FOR SPA	2025-03-25
No.	Revision	Date

North:	Stamp:



Landscape Architecture  
Urban Design  
Site Planning  
Recreation and Park Planning  
Project Management

319 McRae Avenue, Suite 502, Ottawa, Ontario, K1Z 0B9  
Tel: (613) 729-4536

1. All measurements in millimeters unless specified otherwise.  
Do not scale drawing. All drawings to be read in conjunction with written specifications.
2. Copyright reserved. This drawing is the exclusive property of CSW Landscape Architects Ltd. and shall not be used without the consent thereof.
3. This Drawing may not be used for construction until signed by the landscape architect. It is the responsibility of the contractor to:
  - check and verify all dimensions on site;
  - report all errors and/or omissions to the landscape architect;
  - comply with all pertinent codes and by-laws;
  - check and verify locations of all underground services with all local utilities prior to any digging.

Project:

URBANDALE  
2145 WALKLEY ROAD

2145 Walkley Road  
OTTAWA., ONTARIO

Drawing:

LANDSCAPE  
PLANTING DETAILS

Scale:	Date:
AS NOTED	2025-03-18
Design By:	Drawn By:
AB	AB
Project Number:	Sheet Number:
2019-02	L 2.2