

METRIC
DISTANCES AND ELEVATIONS SHOWN ON THIS PLAN ARE IN METRES
AND CAN BE CONVERTED TO FEET BY DIVIDING BY 0.3048

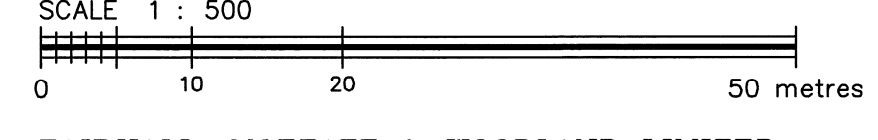
COORDINATES WERE DERIVED FROM REAL TIME NETWORK OBSERVATIONS (SMARTNET) MTM ZONE 9, NAD83 ORIGINAL.

COORDINATES HAVE BEEN DETERMINED TO AN URBAN ACCURACY IN ACCORDANCE WITH SECTION 14(2) OF O.REG 216/10.

POINT ID	NORTHING	EASTING
1	5027698.17	373284.10
2	5027460.86	372878.28

COORDINATES CANNOT IN THEMSELVES BE USED TO RE-ESTABLISH CORNERS OR BOUNDARIES SHOWN ON THIS PLAN.

TOPOGRAPHIC SURVEY OF
PART OF BLOCK 'L', PART OF BLOCK L3,
AND ONE FOOT RESERVE
REGISTERED PLAN 728
AND PART OF LOT 19, JG, (GLOUCESTER)
CITY OF OTTAWA



FAIRHALL, MOFFATT & WOODLAND LIMITED
ONTARIO LAND SURVEYORS

- ELEVATION NOTES**
- ELEVATIONS SHOWN HEREON ARE REFERRED TO GEODETTIC DATUM (CGVD28).
 - ELEVATIONS FOR MANHOLE COVERS AND CATCH BASINS HAVE TO BE INDEPENDENTLY CONFIRMED BEFORE THEY CAN BE ACCEPTED FOR FINAL DESIGN OR CONSTRUCTION PURPOSES.
 - IT IS THE RESPONSIBILITY OF THE USER OF THIS INFORMATION TO VERIFY THAT THE JOB BENCHMARKS HAVE NOT BEEN ALTERED OR DISTURBED AND THAT THEIR RELATIVE ELEVATION AND DESCRIPTION AGREE WITH THE INFORMATION SHOWN ON THIS DRAWING.

- UTILITY NOTES**
- THIS DRAWING CANNOT BE ACCEPTED AS ACKNOWLEDGING ALL UNDERGROUND UTILITIES AND IT WILL BE THE RESPONSIBILITY OF THE USER TO CONTACT THE RESPECTIVE UTILITY AUTHORITIES FOR CONFIRMATION OR LOCATION.
 - BEFORE ANY WORK INVOLVING PROBING, EXCAVATING, ETC., A FIELD LOCATION OF UNDERGROUND PLANT BY THE PERTINENT UTILITY AUTHORITY IS MANDATORY.
 - ON SITE UNDERGROUND UTILITIES INFORMATION SHOWN ARE AS LOCATED BY MULTIVIEW LOCATES INC. UTILITIES HAVE BEEN LOCATED FOR A PORTION OF SITE ONLY.

- NOTES**
- BEARINGS ARE GRID, DERIVED FROM OBSERVED REFERENCE POINTS ① AND ② BY REAL TIME NETWORK OBSERVATIONS AND ARE REFERRED TO THE CENTRAL MERIDIAN, 76°30'W LONGITUDE MTM ZONE 9, (NAD83 ORIGINAL).
 - DISTANCES ARE GROUND AND CAN BE CONVERTED TO GRID BY MULTIPLYING BY THE COMBINED SCALE FACTOR 0.999950.
 - ELEVATIONS ARE REFERRED TO GEODETTIC DATUM (CGVD28).

- LEGEND**
- - SURVEY MONUMENT SET
 - - SURVEY MONUMENT FOUND
 - SIB - STANDARD IRON BAR
 - RIB - ROUND IRON BAR
 - (P) - REGISTERED PLAN 728
 - (P1) - PLAN SR-6261
 - (P2) - PLAN SR-11369
 - (M) - MEASURED
 - (S) - SET
 - (D) - INST. N685696
 - PIN - PROPERTY IDENTIFIER NUMBER
 - (SU) - SOURCE UNKNOWN
 - (857) - FAIRHALL, MOFFATT & WOODLAND LTD., O.L.S.
 - CB - CATCH BASIN
 - MH - MANHOLE
 - LS - LAMP STANDARD
 - CT - CONIFEROUS TREE
 - DT - DECIDUOUS TREE
 - GV - GAS VALVE
 - WV - WATER VALVE
 - ▲ - SIGN
 - UP - UTILITY POLE
 - W - WATERMAIN
 - OH - OVERHEAD UTILITY WRES
 - UH - UNDERGROUND HYDRO
 - UB - UNDERGROUND BELL
 - G - GAS MAIN
 - ST - STORM SEWER
 - S - SANITARY SEWER
 - C - CURB
 - E - UNDERGROUND ELECTRICAL

SURVEYOR'S CERTIFICATE

I CERTIFY THAT:

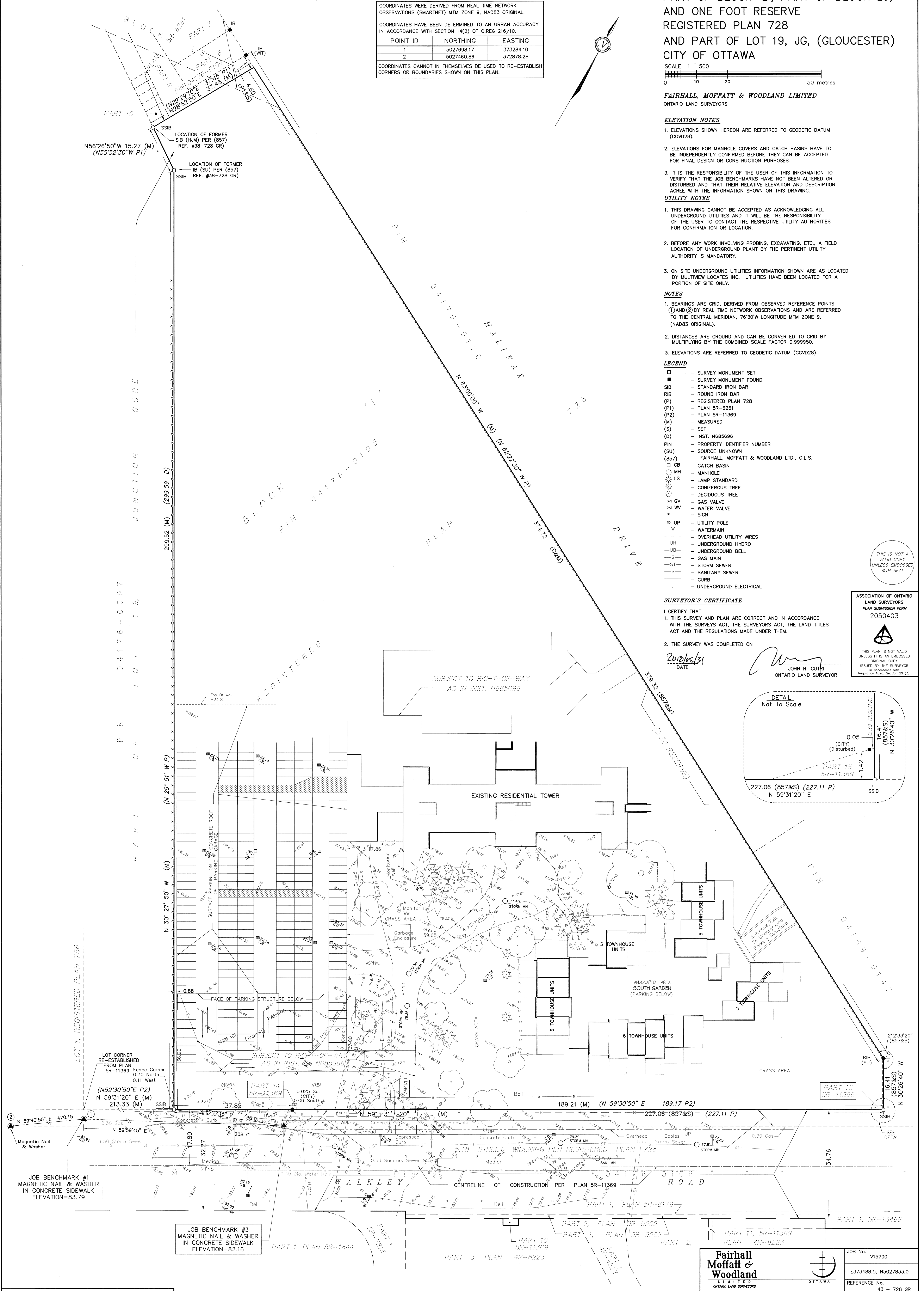
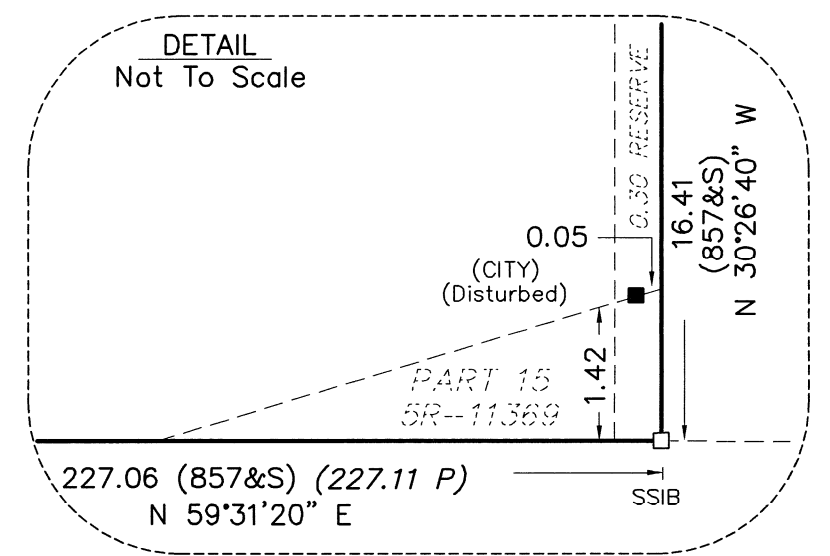
- THIS SURVEY AND PLAN ARE CORRECT AND IN ACCORDANCE WITH THE SURVEYS ACT, THE SURVEYORS ACT, THE LAND TITLES ACT AND THE REGULATIONS MADE UNDER THEM.
- THE SURVEY WAS COMPLETED ON

2018/05/31
DATE

JOHN H. GUTRI
ONTARIO LAND SURVEYOR

ASSOCIATION OF ONTARIO LAND SURVEYORS
PLAN SUBMISSION FORM
2050403

THIS PLAN IS NOT VALID UNLESS IT IS AN EMBOSSED ORIGINAL COPY ISSUED BY THE SURVEYOR in accordance with Regulation 1028, Section 29 (3).



© COPYRIGHT 2018. REPRODUCTION, ALTERATION OR DISTRIBUTION OF THIS PLAN WITHOUT THE WRITTEN CONSENT OF FAIRHALL, MOFFATT & WOODLAND LIMITED IS PROHIBITED.

Fairhall Moffatt & Woodland
LTD. INC.
ONTARIO LAND SURVEYORS

Surveying and Land Information Services
100-600 TERRY FOX DRIVE, KANATA, ONTARIO K2L 4B6
TEL: (613) 591-2500 FAX: (613) 591-1495
www.fmw.on.ca

OTTAWA

JOB No. v15700
E373488.5, N5027833.0
REFERENCE No. 43 - 728 GR
updated V157.2017.dwg (d)
May 24, 2018