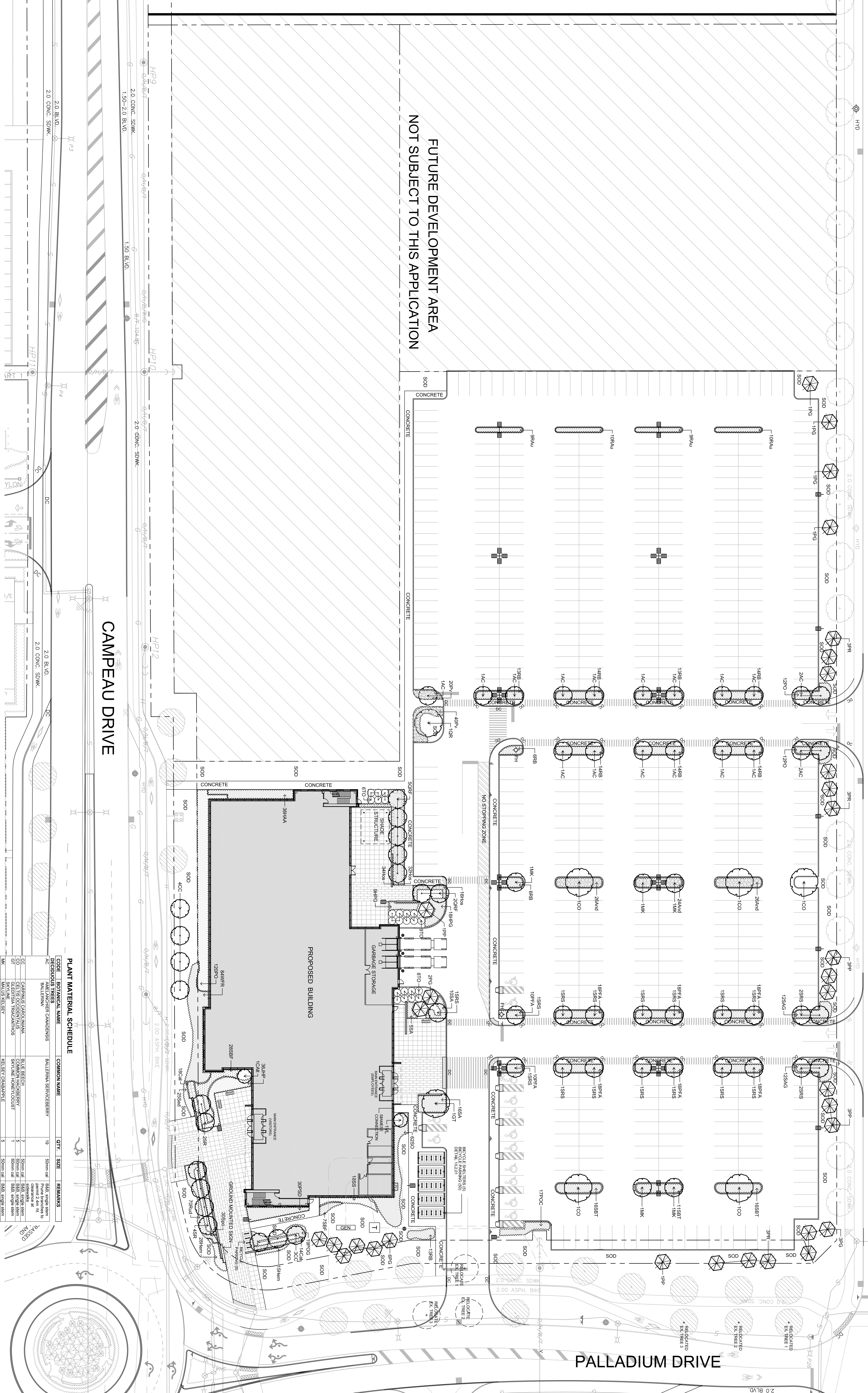


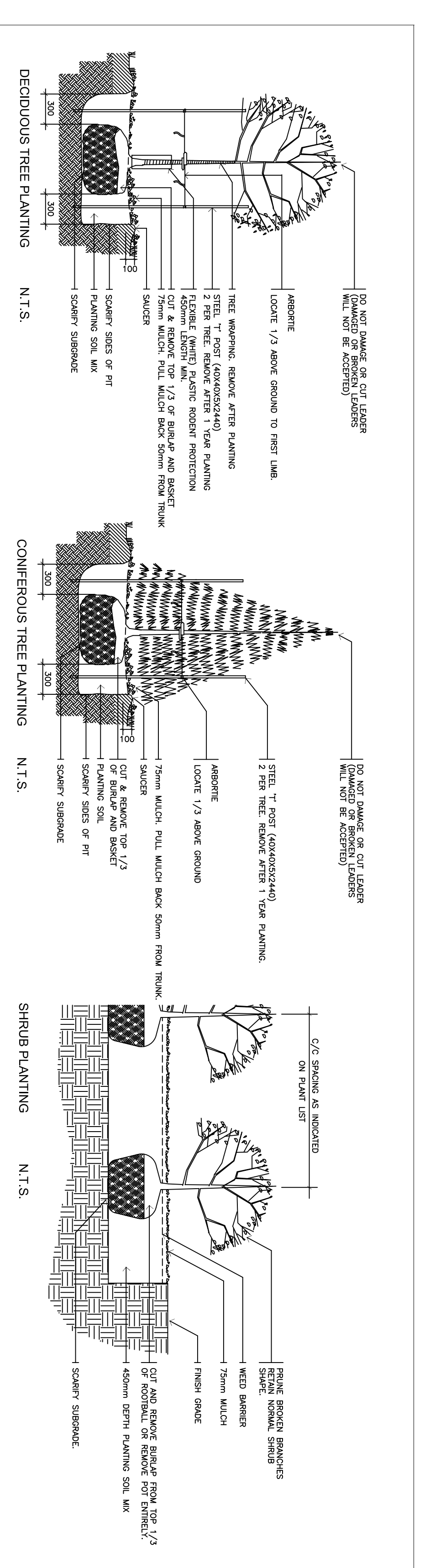
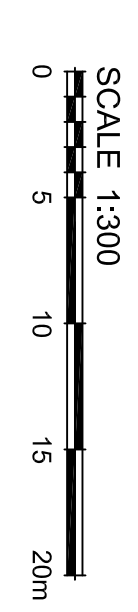
UPPER CANADA STREET



FUTURE DEVELOPMENT AREA  
NOT SUBJECT TO THIS APPLICATION

CAMPEAU DRIVE

PALLADIUM DRIVE



PLANT MATERIAL SCHEDULE

CODE	BOTANICAL NAME	COMMON NAME	QTY.	SIZE	REMARKS
DE001	BALTIMORE ORNAMENTAL	BALTIMORE ORNAMENTAL	19	50cm in H	18cm in W
DE002	COLOGNE CAMELINA	COLOGNE CAMELINA	7	50cm in H	18cm in W
DE003	GALEA STRIPATA	GALEA STRIPATA	7	50cm in H	18cm in W
DE004	MAHONIA	MAHONIA	7	50cm in H	18cm in W
DE005	MAHONIA	MAHONIA	7	50cm in H	18cm in W
DE006	MAHONIA	MAHONIA	7	50cm in H	18cm in W
DE007	MAHONIA	MAHONIA	7	50cm in H	18cm in W
DE008	MAHONIA	MAHONIA	7	50cm in H	18cm in W
DE009	MAHONIA	MAHONIA	7	50cm in H	18cm in W
DE010	MAHONIA	MAHONIA	7	50cm in H	18cm in W
DE011	MAHONIA	MAHONIA	7	50cm in H	18cm in W
DE012	MAHONIA	MAHONIA	7	50cm in H	18cm in W
DE013	MAHONIA	MAHONIA	7	50cm in H	18cm in W
DE014	MAHONIA	MAHONIA	7	50cm in H	18cm in W
DE015	MAHONIA	MAHONIA	7	50cm in H	18cm in W
DE016	MAHONIA	MAHONIA	7	50cm in H	18cm in W
DE017	MAHONIA	MAHONIA	7	50cm in H	18cm in W
DE018	MAHONIA	MAHONIA	7	50cm in H	18cm in W
DE019	MAHONIA	MAHONIA	7	50cm in H	18cm in W
DE020	MAHONIA	MAHONIA	7	50cm in H	18cm in W
DE021	MAHONIA	MAHONIA	7	50cm in H	18cm in W
DE022	MAHONIA	MAHONIA	7	50cm in H	18cm in W
DE023	MAHONIA	MAHONIA	7	50cm in H	18cm in W
DE024	MAHONIA	MAHONIA	7	50cm in H	18cm in W
DE025	MAHONIA	MAHONIA	7	50cm in H	18cm in W
DE026	MAHONIA	MAHONIA	7	50cm in H	18cm in W
DE027	MAHONIA	MAHONIA	7	50cm in H	18cm in W
DE028	MAHONIA	MAHONIA	7	50cm in H	18cm in W
DE029	MAHONIA	MAHONIA	7	50cm in H	18cm in W
DE030	MAHONIA	MAHONIA	7	50cm in H	18cm in W
DE031	MAHONIA	MAHONIA	7	50cm in H	18cm in W
DE032	MAHONIA	MAHONIA	7	50cm in H	18cm in W
DE033	MAHONIA	MAHONIA	7	50cm in H	18cm in W
DE034	MAHONIA	MAHONIA	7	50cm in H	18cm in W
DE035	MAHONIA	MAHONIA	7	50cm in H	18cm in W
DE036	MAHONIA	MAHONIA	7	50cm in H	18cm in W
DE037	MAHONIA	MAHONIA	7	50cm in H	18cm in W
DE038	MAHONIA	MAHONIA	7	50cm in H	18cm in W
DE039	MAHONIA	MAHONIA	7	50cm in H	18cm in W
DE040	MAHONIA	MAHONIA	7	50cm in H	18cm in W
DE041	MAHONIA	MAHONIA	7	50cm in H	18cm in W
DE042	MAHONIA	MAHONIA	7	50cm in H	18cm in W
DE043	MAHONIA	MAHONIA	7	50cm in H	18cm in W
DE044	MAHONIA	MAHONIA	7	50cm in H	18cm in W
DE045	MAHONIA	MAHONIA	7	50cm in H	18cm in W
DE046	MAHONIA	MAHONIA	7	50cm in H	18cm in W
DE047	MAHONIA	MAHONIA	7	50cm in H	18cm in W
DE048	MAHONIA	MAHONIA	7	50cm in H	18cm in W
DE049	MAHONIA	MAHONIA	7	50cm in H	18cm in W
DE050	MAHONIA	MAHONIA	7	50cm in H	18cm in W
DE051	MAHONIA	MAHONIA	7	50cm in H	18cm in W
DE052	MAHONIA	MAHONIA	7	50cm in H	18cm in W
DE053	MAHONIA	MAHONIA	7	50cm in H	18cm in W
DE054	MAHONIA	MAHONIA	7	50cm in H	18cm in W
DE055	MAHONIA	MAHONIA	7	50cm in H	18cm in W
DE056	MAHONIA	MAHONIA	7	50cm in H	18cm in W
DE057	MAHONIA	MAHONIA	7	50cm in H	18cm in W
DE058	MAHONIA	MAHONIA	7	50cm in H	18cm in W
DE059	MAHONIA	MAHONIA	7	50cm in H	18cm in W
DE060	MAHONIA	MAHONIA	7	50cm in H	18cm in W
DE061	MAHONIA	MAHONIA	7	50cm in H	18cm in W
DE062	MAHONIA	MAHONIA	7	50cm in H	18cm in W
DE063	MAHONIA	MAHONIA	7	50cm in H	18cm in W
DE064	MAHONIA	MAHONIA	7	50cm in H	18cm in W
DE065	MAHONIA	MAHONIA	7	50cm in H	18cm in W
DE066	MAHONIA	MAHONIA	7	50cm in H	18cm in W
DE067	MAHONIA	MAHONIA	7	50cm in H	18cm in W
DE068	MAHONIA	MAHONIA	7	50cm in H	18cm in W
DE069	MAHONIA	MAHONIA	7	50cm in H	18cm in W
DE070	MAHONIA	MAHONIA	7	50cm in H	18cm in W
DE071	MAHONIA	MAHONIA	7	50cm in H	18cm in W
DE072	MAHONIA	MAHONIA	7	50cm in H	18cm in W
DE073	MAHONIA	MAHONIA	7	50cm in H	18cm in W
DE074	MAHONIA	MAHONIA	7	50cm in H	18cm in W
DE075	MAHONIA	MAHONIA	7	50cm in H	18cm in W
DE076	MAHONIA	MAHONIA	7	50cm in H	18cm in W
DE077	MAHONIA	MAHONIA	7	50cm in H	18cm in W
DE078	MAHONIA	MAHONIA	7	50cm in H	18cm in W
DE079	MAHONIA	MAHONIA	7	50cm in H	18cm in W
DE080	MAHONIA	MAHONIA	7	50cm in H	18cm in W
DE081	MAHONIA	MAHONIA	7	50cm in H	18cm in W
DE082	MAHONIA	MAHONIA	7	50cm in H	18cm in W
DE083	MAHONIA	MAHONIA	7	50cm in H	18cm in W
DE084	MAHONIA	MAHONIA	7	50cm in H	18cm in W
DE085	MAHONIA	MAHONIA	7	50cm in H	18cm in W
DE086	MAHONIA	MAHONIA	7	50cm in H	18cm in W
DE087	MAHONIA	MAHONIA	7	50cm in H	18cm in W
DE088	MAHONIA	MAHONIA	7	50cm in H	18cm in W
DE089	MAHONIA	MAHONIA	7	50cm in H	18cm in W
DE090	MAHONIA	MAHONIA	7	50cm in H	18cm in W
DE091	MAHONIA	MAHONIA	7	50cm in H	18cm in W
DE092	MAHONIA	MAHONIA	7	50cm in H	18cm in W
DE093	MAHONIA	MAHONIA	7	50cm in H	18cm in W
DE094	MAHONIA	MAHONIA	7	50cm in H	18cm in W
DE095	MAHONIA	MAHONIA	7	50cm in H	18cm in W
DE096	MAHONIA	MAHONIA	7	50cm in H	18cm in W
DE097	MAHONIA	MAHONIA	7	50cm in H	18cm in W
DE098	MAHONIA	MAHONIA	7	50cm in H	18cm in W
DE099	MAHONIA	MAHONIA	7	50cm in H	18cm in W
DE100	MAHONIA	MAHONIA	7	50cm in H	18cm in W

GENERAL NOTES

- The drawing shall be used in conjunction with all relevant documents, including but not limited to, the site plan, zoning bylaws, and any other applicable regulations.
- Contractor shall ensure that all materials and workmanship are in accordance with the specifications and standards set forth in this drawing.
- Contractor shall ensure that all materials and workmanship are in accordance with the specifications and standards set forth in this drawing.
- Contractor shall ensure that all materials and workmanship are in accordance with the specifications and standards set forth in this drawing.
- Contractor shall ensure that all materials and workmanship are in accordance with the specifications and standards set forth in this drawing.
- Contractor shall ensure that all materials and workmanship are in accordance with the specifications and standards set forth in this drawing.
- Contractor shall ensure that all materials and workmanship are in accordance with the specifications and standards set forth in this drawing.
- Contractor shall ensure that all materials and workmanship are in accordance with the specifications and standards set forth in this drawing.
- Contractor shall ensure that all materials and workmanship are in accordance with the specifications and standards set forth in this drawing.
- Contractor shall ensure that all materials and workmanship are in accordance with the specifications and standards set forth in this drawing.
- Contractor shall ensure that all materials and workmanship are in accordance with the specifications and standards set forth in this drawing.
- Contractor shall ensure that all materials and workmanship are in accordance with the specifications and standards set forth in this drawing.
- Contractor shall ensure that all materials and workmanship are in accordance with the specifications and standards set forth in this drawing.
- Contractor shall ensure that all materials and workmanship are in accordance with the specifications and standards set forth in this drawing.
- Contractor shall ensure that all materials and workmanship are in accordance with the specifications and standards set forth in this drawing.

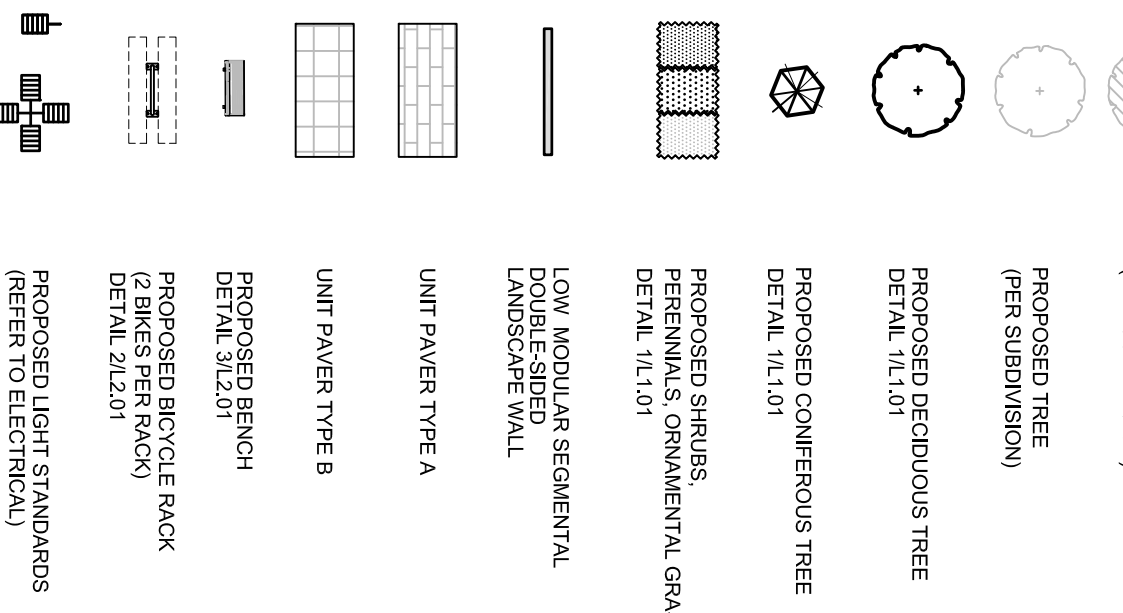


**LEVSTEK CONSULTANT**  
 1111 King Street West, Suite 1100  
 Toronto, Ontario M5X 1C5  
 Tel: 416-593-8888  
 Fax: 416-593-8889  
 www.levstek.com

**KINAXIS OFFICE BUILDING**  
 8700 CAMPEAU DRIVE  
 MISSISSAUGA, ONTARIO L4X 1L3

**LANDSCAPE PLAN**  
 DATE: JUNE 2019  
 DRAWING NO: L1.01

LEGEND / SYMBOL



**OWNER:**  
 KINAXIS DEVELOPMENT INC.  
 705-225 Mainville St., Ottawa, ON K1P 1P9

**ARCHITECT:**  
 DAVID S. MACROBE ARCHITECTS INC.  
 66 Queen St., Ottawa, ON K1P 5C8

**CONSULTANTS:**  
 SITE & ELECTRICAL  
 MACE ENGINEERING  
 1785 Woodward Dr., Ottawa, ON K2C 0P9

**OWNER'S REPRESENTATIVE:**  
 400-333 Preston St., Ottawa, ON K1S 5M4

**LEVSTEK CONSULTANT'S INC.**  
 5871 High Creek, Ottawa, ON K0A 2W0

NOT FOR CONSTRUCTION

NO.	REVISION	DATE	BY	DESCRIPTION
1	ISSUED FOR PERMITS	2019.06.11	DAVID S. MACROBE	ISSUED FOR PERMITS
2	ISSUED FOR PERMITS	2019.06.11	DAVID S. MACROBE	ISSUED FOR PERMITS
3	ISSUED FOR PERMITS	2019.06.11	DAVID S. MACROBE	ISSUED FOR PERMITS
4	ISSUED FOR PERMITS	2019.06.11	DAVID S. MACROBE	ISSUED FOR PERMITS
5	ISSUED FOR PERMITS	2019.06.11	DAVID S. MACROBE	ISSUED FOR PERMITS
6	ISSUED FOR PERMITS	2019.06.11	DAVID S. MACROBE	ISSUED FOR PERMITS
7	ISSUED FOR PERMITS	2019.06.11	DAVID S. MACROBE	ISSUED FOR PERMITS
8	ISSUED FOR PERMITS	2019.06.11	DAVID S. MACROBE	ISSUED FOR PERMITS
9	ISSUED FOR PERMITS	2019.06.11	DAVID S. MACROBE	ISSUED FOR PERMITS
10	ISSUED FOR PERMITS	2019.06.11	DAVID S. MACROBE	ISSUED FOR PERMITS
11	ISSUED FOR PERMITS	2019.06.11	DAVID S. MACROBE	ISSUED FOR PERMITS
12	ISSUED FOR PERMITS	2019.06.11	DAVID S. MACROBE	ISSUED FOR PERMITS
13	ISSUED FOR PERMITS	2019.06.11	DAVID S. MACROBE	ISSUED FOR PERMITS
14	ISSUED FOR PERMITS	2019.06.11	DAVID S. MACROBE	ISSUED FOR PERMITS