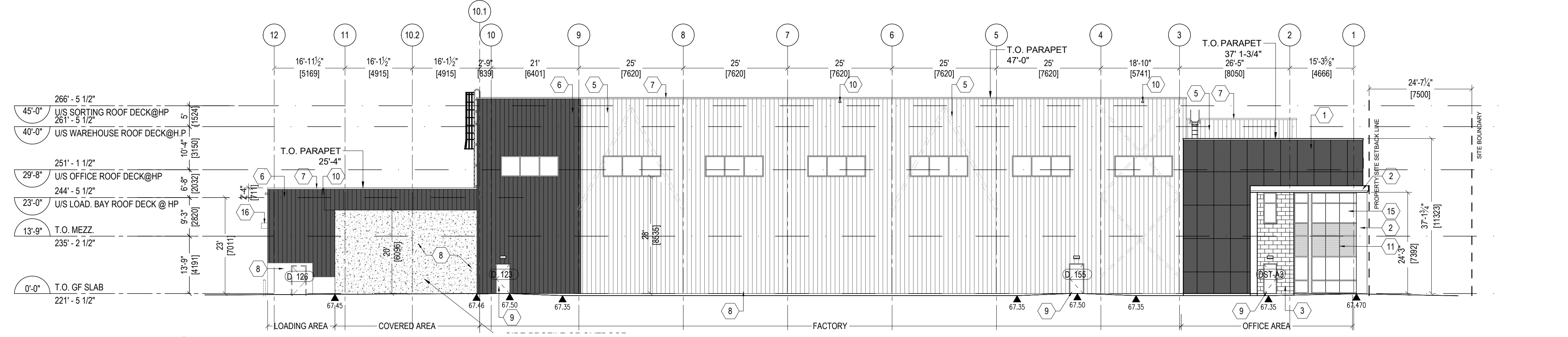
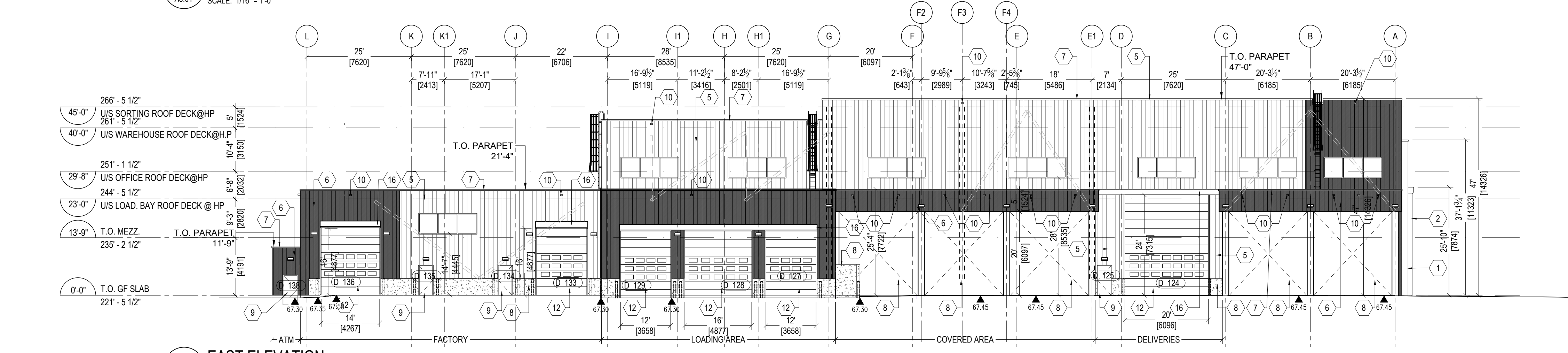


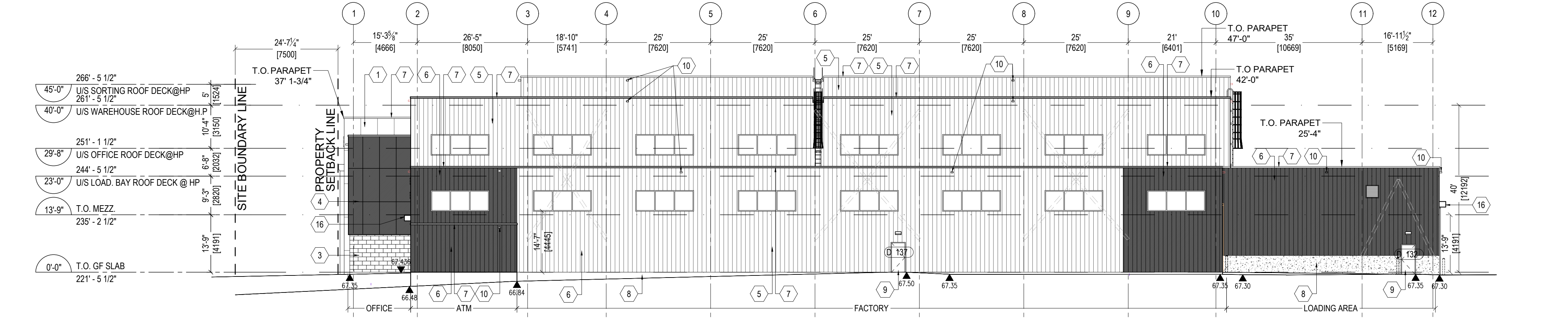
1 WEST ELEVATION
A3.01 SCALE: 1/16" = 1'-0"



2 NORTH ELEVATION
A3.01 SCALE: 1/16" = 1'-0"

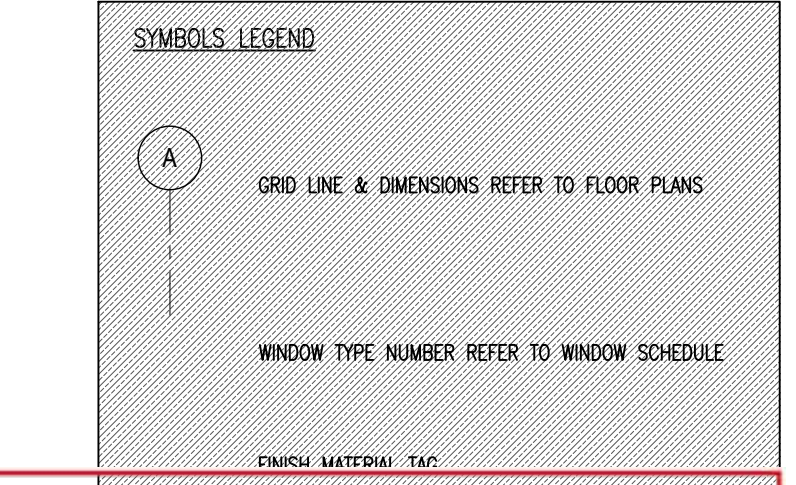


3 EAST ELEVATION
A3.01 SCALE: 1/16" = 1'-0"



4 SOUTH ELEVATION
A3.01 SCALE: 1/16" = 1'-0"

- LEGEND**
- 1 ALUMINUM COMPOSITE PANEL ALUCOIL COLOUR: UMBA GREY - 7022 - 04mm. PANEL SIZES: -HORIZONTAL: 8'x4'
 - 2 ALUMINUM COMPOSITE PANEL ALUCOIL COLOUR: TRD RED .THICKNESS 3mm
 - 3 METAL SIDING 12" X 24" BLOCK PROFILE 1.530" PANEL LENGTH W/ AND NUTS SCREWS COLOUR TO MATCH IMP IMP SOLID FLUOROPON PVDF COLOURS-KYMAR 500/HYAR 5000 DOVE GREY
 - 4 ALUMINUM COMPOSITE PANEL ALUCOIL COLOUR: UMBA GREY - 7022 - 04mm. PANEL SIZES: -HORIZONTAL: 8'x4'
 - 5 PRE-MANUFACTURED INSULATED METAL PANEL SYSTEM, SHADOWLINE VERTICAL ORIENTATION. COLOUR: 432B1021 FLUROPON L/R SR DOVE GRAY
 - 6 PRE-MANUFACTURED INSULATED METAL PANEL SYSTEM, SHADOWLINE VERTICAL ORIENTATION. COLOUR: 432B1714 FLUROPON CHARCOAL
 - 7 PREFINISHED METAL FLASHING C/W DRIP EDGE, COLOUR BLACK
 - 8 POURED CONCRETE
 - 9 INSULATED HOLLOW METAL DOOR, COLOUR TO MATCH KINGSPAN IMP CHARCOAL.
 - 10 PREFIN METAL SCUPPER COLOUR BLACK
 - 11 SPANDREL GLAZING C/W INSULATED BACK PANEL. COLOUR BLACK
 - 12 HIGH SPEED ROLL-UP OVERHEAD DOOR C/W MOTOR, TRACK AND HARDWARE. COLOUR TO MATCH KINGSPAN IMP CHARCOAL.
 - 13 TYP. 1" VERTICAL REVEAL JOINT C/W ACM FILLER PLATE. COLOUR: CHARCOAL. INSTALL REVEALS PER MANUF. RECOMMENDATIONS.
 - 14 INTERNALLY LIT SIGNAGE, PROVIDE BLOCKING AND POWER. G.C. TO PROVIDE SHOP DRAWINGS.
 - 15 ANODIZED ALUMINUM STOREFRONT FRAMING SYSTEM. FRAME COLOUR BLACK.
 - 16 RED METAL CANOPY COLOUR RED TO MATCH ALUMINUM COMPOSITE PANEL. COLOUR SOLID TRC RED 4-TRC-30.
 - 17 INSULATED OVERHEAD DOOR COMPLETE WITH TRACK & HARDWARE. COLOUR: CHARCOAL. COLOUR TO MATCH KINGSPAN IMP CHARCOAL.
 - 18 ANODIZED ALUMINUM CLOSURE CAP / CORNER OR WINDOW SILL TO MATCH WINDOW BY WINDOW SUPPLIER
 - 19 OUTDOOR CAMERAS
 - 20 INTERNALLY LIT SIGNAGE, PROVIDE POWER SUPPLY AND 1/2" THICK EXTERIOR GRADE FINISH FOR SIGNAGE MOUNTING. G.C. TO PROVIDE SHOP DRAWINGS.
 - 21 CANOPY C/W LIGHTING, ALUMINUM COMPOSITE MATERIAL ALUCOIL LARSON COLOUR: PEWTER MICA AND GAUGE TO BE CONFIRMED. REFER TO SECTION DETAILS 4 & 5/A-512.
 - 22 TYP. 1" VERTICAL REVEAL JOINT C/W ACM FILLER PLATE. COLOUR: CHARCOAL. INSTALL REVEALS PER MANUF. RECOMMENDATIONS.
 - 23 TYP. 1 1/2" HORIZONTAL REVEAL JOINT C/W ACM FILLER PLATE. COLOUR: CHARCOAL. INSTALL REVEALS PER MANUF. RECOMMENDATIONS.
 - 24 INTERNALLY LIT SIGNAGE, PROVIDE BLOCKING AND POWER. G.C. TO PROVIDE SHOP DRAWINGS. REFER TO DETAILS FOR SIGNAGE INSTALLATION.
 - 25 GLASS & METAL SIGNAGE BAND BY SIGNAGE SUPPLIER. PROVIDE BLOCKING AS REQUIRED.
 - 26 DOCK SEAL
 - 27 CONTINUOUS BENT METAL CAP. 22 GA. PREFINISHED METAL C/W HIDDEN FASTENERS. COLOR TO MATCH WINDOW FRAME
 - 28 PREFINISHED METAL DRIP FLASHING. PAINT COLOUR TO MATCH ADJACENT EXTERIOR FINISH. DGE
 - 29 HOT DIPPED GALVANIZED BENT STEEL PLATE AROUND 3 SIDES OF OPENING. SEE DETAILS
 - 30 CONTINUOUS BENT METAL CAP. 22 GA. PREFINISHED METAL C/W HIDDEN FASTENERS. COLOUR PEWTER. SEE DETAILS POS 342, 343, 344
 - 31 6" DIAMETER CONCRETE FILLED STEEL PROTECTION BOLLARD. 54" HIGH ABOVE GRADE.
 - 32 SWAGE CONNECTION REFER TO M&E MAX 900mm MIN 300mm ABOVE GRADE
 - 33 HOT DIPPED GALVANIZED STEEL GUARDRAIL AT LOADING RAMP. PAINTED YELLOW.
 - 34 HOT DIPPED GALVANIZED STEEL WALL PROTECTION. PAINTED YELLOW SEE DETAIL 4/A102.
 - 35 MECHANICAL LOUVER, PREFIN METAL. COLOUR TO MATCH WALL FINISH. REFER TO MECHANICAL.
 - 36 ANODIZED ALUMINUM CLOSURE CAP / CORNER OR WINDOW SILL TO MATCH WINDOW BY WINDOW SUPPLIER
 - 37 EXTERIOR WALL PAK LIGHT. REFER TO ELECTRICAL
 - 38 PREFINISHED METAL IMP STACK JOINT COVER TRIM. COLOUR TO MATCH IMP DARK BRONZE.
 - 39 PREFINISHED METAL IMP STACK JOINT COVER TRIM. COLOUR TO MATCH IMP PEWTER.
 - 40 PROVIDE POWER FOR SIGNAGE, CONFORM WITH SIGN SUPPLIER FOR POWER REQUIREMENTS
 - 41 TRAFFIC LIGHTS. REFER TO ELECTRICAL
 - 42 PREFINISHED METAL PARAPET CAP C/W LIGHTING, ALUMINUM COMPOSITE MATERIAL ALUCOIL LARSON FINISH : PEWTER MICA GAUGE TRC. REFER TO A342 & A343.
 - 43 ALUMINUM COMPOSITE MATERIAL C/W CONTINUOUS BENT METAL CAP. 22GA. PRE-FINISHED VENTED METAL SOFFIT-ALUCOIL LARSON FINISH : PEWTER MICA.



LILY XU, MCIP, RPP
MANAGER, DEVELOPMENT REVIEW SOUTH
PLANNING, INFRASTRUCTURE & ECONOMIC
DEVELOPMENT DEPARTMENT, CITY OF OTTAWA

APPROVED
By Lily Xu at 5:15 pm, Sep 14, 2020

1. Contractor must verify all job dimensions, all drawings, details, specifications and report any discrepancies to owners before proceeding with work.
2. All drawings and specifications are instruments of service and the property of the architects which must be returned at the completion of the work, and may not be reproduced without their written permission.

02	ISSUED FOR SPC RESPONSE 2	2020-03-13
01	ISSUED FOR SPC RESPONSE 1	2020-01-17
ref	description	date

revisions

ONTARIO ASSOCIATION OF ARCHITECTS
Nicholas Caragianis
LICENSEE
5057

DESIGN ARCHITECT NICHOLAS CARAGIANIS ARCHITECT INC.
137 Pamela St. Ottawa, ON. K1S 3K9
tel: (613) 237-6801 fax: (613) 237-8289
email: shickey@ncarchitect.ca

STRUCTURAL ENGINEER LEEKOR
359 Kent, Suite 501, Ottawa, ON. K2P 0R6
tel: (613) 234-0886 fax: (613) 233-4413
email: lee@leekor.com

MECHANICAL/ELECTRICAL MIRITON
1716 Woodward Drive, Suite 200, Ottawa, ON. K2C 0P8
tel: (613) 722-5486
email: johnnie.chahwan@minton.com

CIVIL ENGINEER NOVATECH
240 Michael Cowpland Drive, Suite 200, Ottawa, ON. K2M 1P6
tel: (613) 254-9643 fax: (613) 254-5867
email: f.thauvette@novatech-eng.com

PLANNING & URBAN DESIGN NOVATECH
240 Michael Cowpland Drive, Suite 200, Ottawa, ON. K2M 1P6
tel: (613) 254-9643 fax: (613) 254-5867
email: l.gichrist@novatech-eng.com

OWNER: AMERICAN IRON & METAL
9100, BOUL. HENRI-BOURASSA EST
MONTREAL, QUEBEC H1E 2S4
tel: 514-494-2000 aim-global.com

TRUE NORTH PROJECT NORTH

ARCHITECT nicholas caragianis architect inc. 137 Pamela Street, Ottawa, ON. K1S 3K9
t: 613 237 6801
f: 613 237 8989
e: info@ncarchitect.ca
www.ncarchitect.ca

PROJECT & LOCATION METAL RECYCLING PLANT
2555 SHEFFIELD ROAD
OTTAWA, ONT.

OFFICE FILE NUMBER 19023

TITLE OF DRAWING BUILDING-A
ELEVATIONS

SCALE: 1/16" = 1'-0" **DRAWING #** A3.01

DATE: MARCH 2019

DRAWN BY: GL. SH. CC. AA