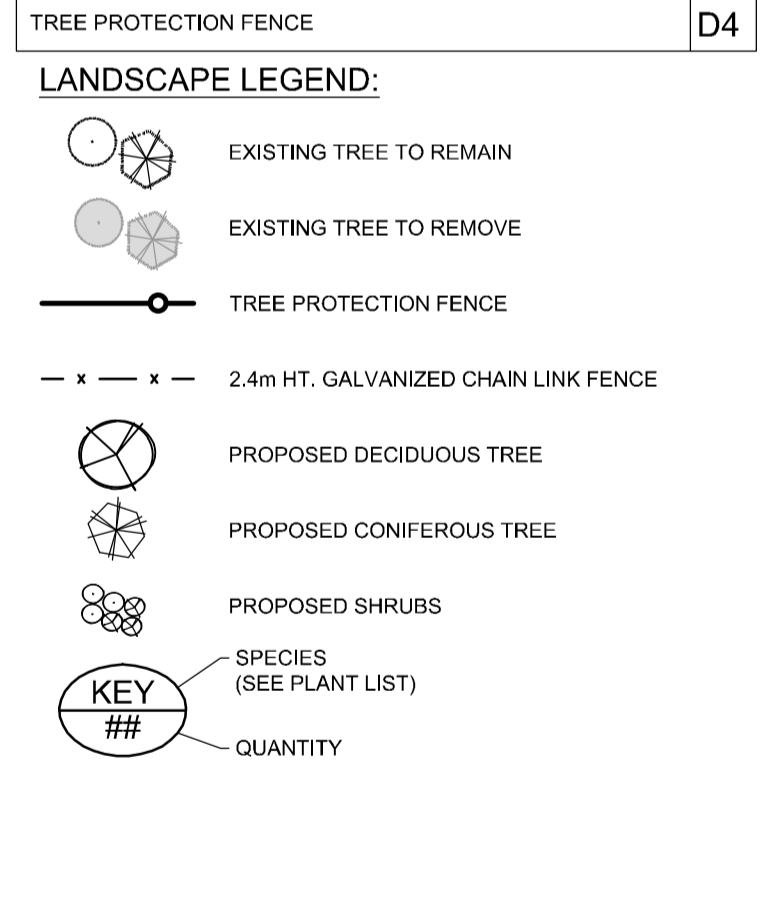
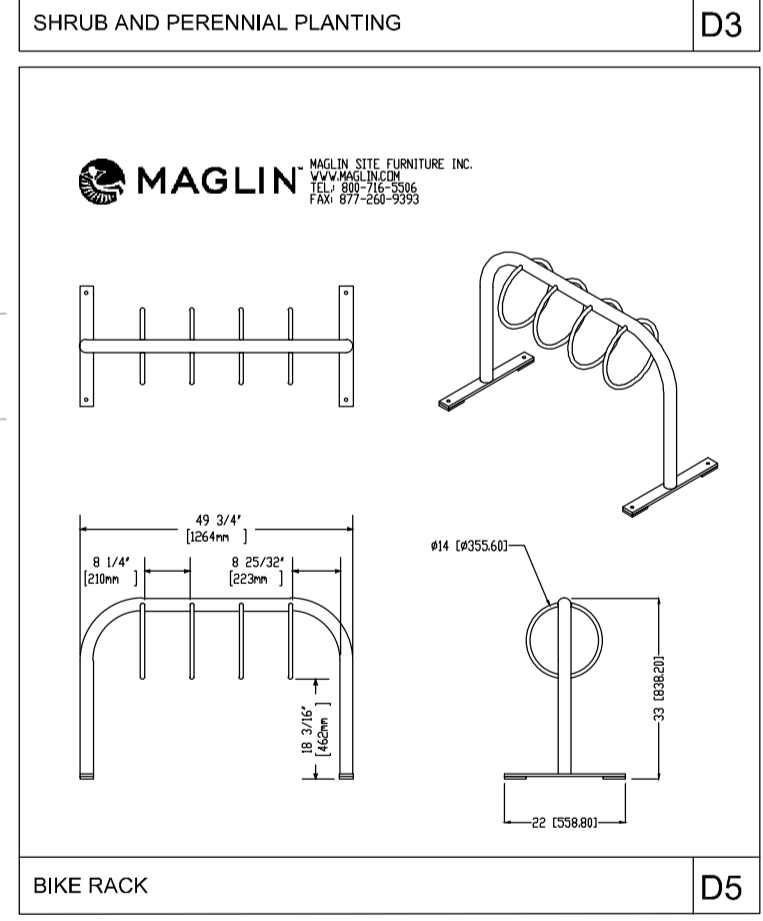
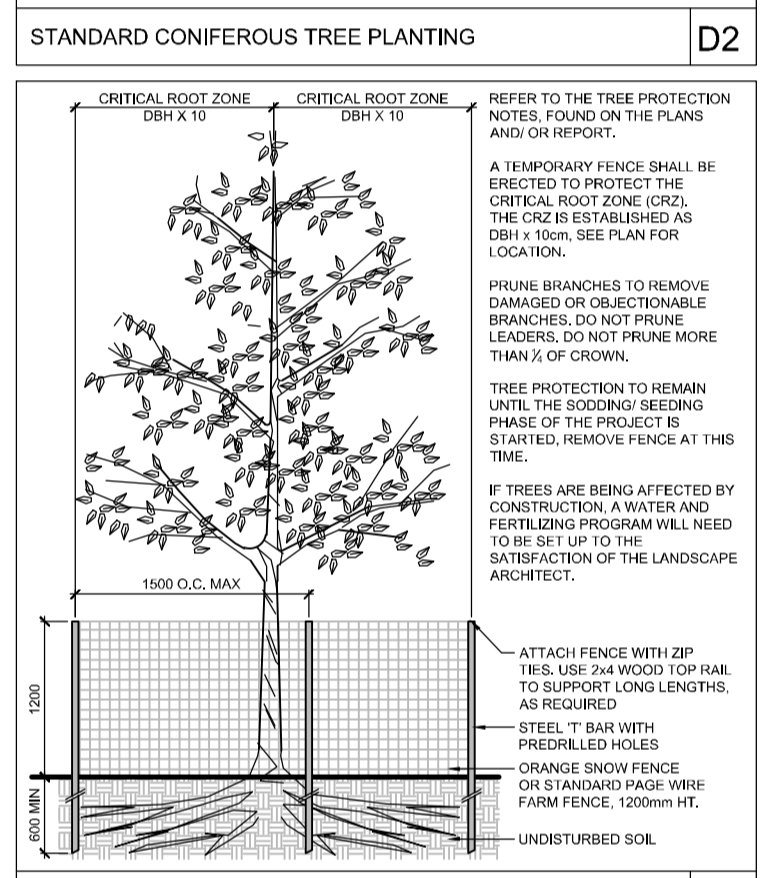
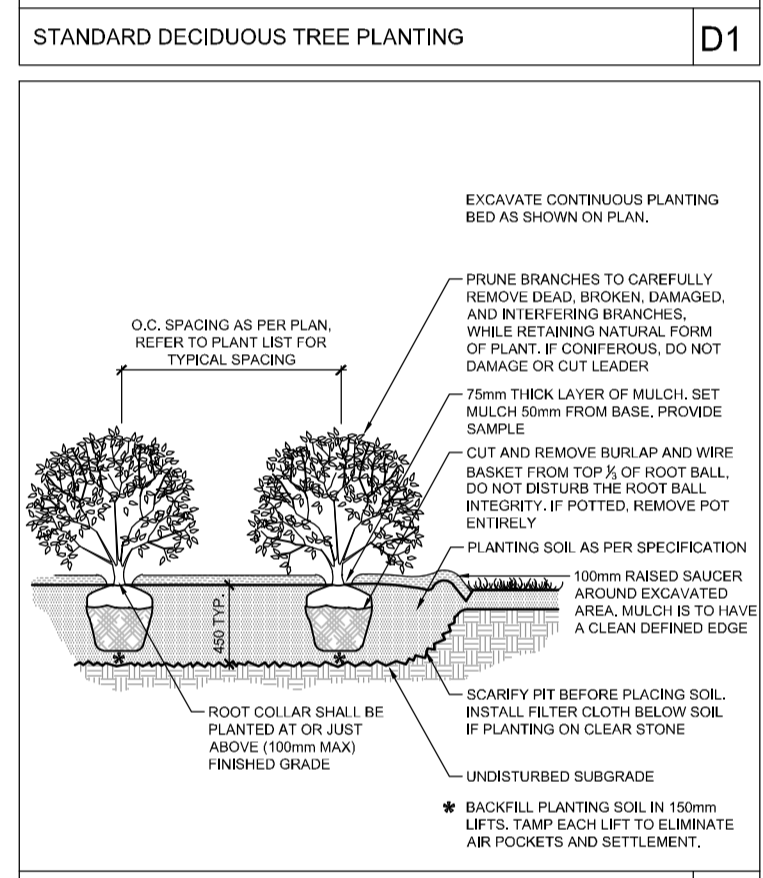
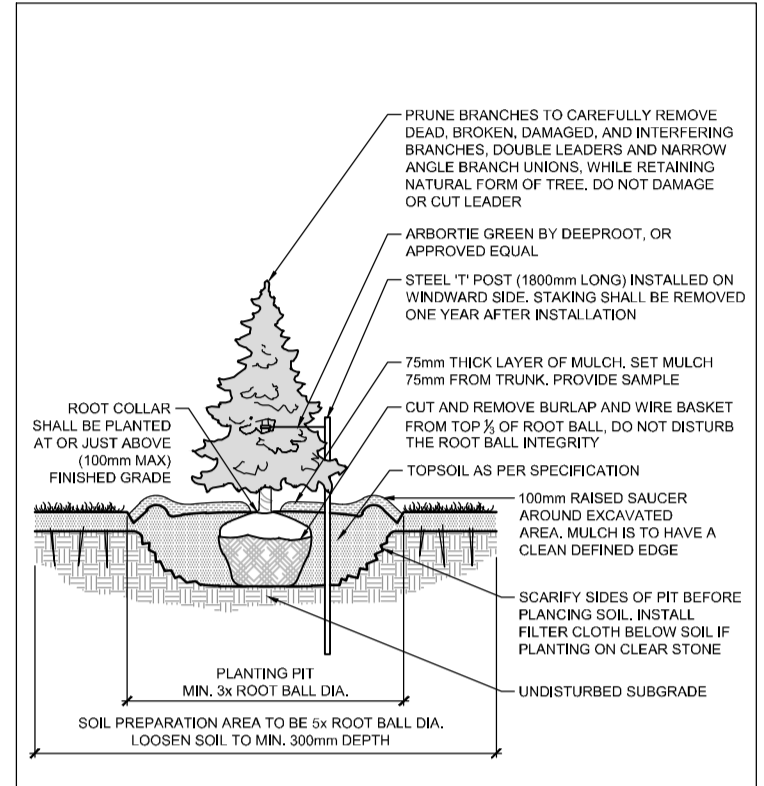
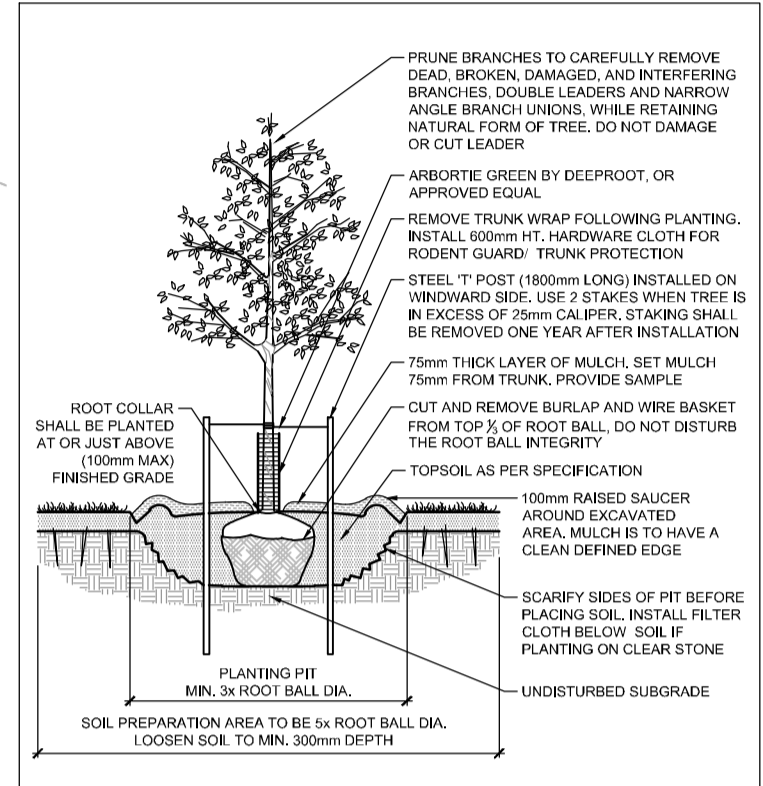



LILY XU, MCIP, RPP
MANAGER, DEVELOPMENT REVIEW SOUTH
PLANNING, INFRASTRUCTURE & ECONOMIC
DEVELOPMENT DEPARTMENT, CITY OF OTTAWA

APPROVED
 By Lily Xu at 5:16 pm, Sep 14, 2020



No.	Botanical Name	Common Name	DBH (m)	CRZ (m)	Condition	Remarks	Recomm.
1	Ulmus sp.	Elm	0.15	1.50	F	Leaves mostly fallen	Remove
2	Pinus nigra	Black Pine	0.30	3.00	G		Remove
3	Pinus nigra	Black Pine	0.30	3.00	G		Remove
4	Acer platanoides	Norway Maple	0.30	3.00	G	Black spot	Remove
5	Picea abies	Norway Spruce	0.35	3.50	G		Remove
6	Picea abies	Norway Spruce	0.30	3.00	G		Remove
7	Picea abies	Norway Spruce	0.30	3.00	G		Remove
8	Acer platanoides	Norway Maple	0.25	2.50	F	Prominent bark, black spot	Remove
9	Acer platanoides	Norway Maple	0.35	3.50	G	Black spot	Remove
10	Thuja occidentalis	Eastern White Cedar	0.1-0.15	1-1.5	G	Clump, 15m ht	Remove
11	Pinus nigra	Black Pine	0.20	2.00	G		Remove
12	Pinus nigra	Black Pine	0.20	2.00	G		Remove
13	Pinus nigra	Black Pine	0.20	2.00	G		Remove
14	Acer platanoides	Norway Maple	0.45	4.50	G	Black spot	Remove
15	Picea abies	Norway Spruce	0.20	2.00	G		Remove
16	Picea abies	Norway Spruce	0.20	2.00	G		Remove
17	Picea abies	Norway Spruce	0.30	3.00	G		Remove
18	Betula Sp.	Birch	0.45	4.50	G		Remove
19	Pinus nigra	Black Pine	0.20	2.00	G		Remove
20	Pinus nigra	Black Pine	0.25	2.50	G		Remove
21	Pinus nigra	Black Pine	0.25	2.50	G		Remove
22	Picea abies	Norway Spruce	0.15	1.50	G		Remove
23	Picea abies	Norway Spruce	0.20	2.00	G		Remove
24	Picea abies	Norway Spruce	0.20	2.00	G		Remove
25	Picea abies	Norway Spruce	0.20	2.00	G		Remove
26	Picea abies	Norway Spruce	0.20	2.00	G		Remove
27	Acer ginnala	Amur Maple	0.15	1.50	F	Leaning, health unclear - no leaves	PROTECT
28	Acer ginnala	Amur Maple	0.20	2.00	F	Low crotch, health unclear - no leaves	PROTECT
29	Acer negundo	Manitoba Maple	0.20	2.00	F	Not easily desecrable from street	PROTECT
30	Acer negundo	Manitoba Maple	0.20	2.00	F	Not easily desecrable from street	Remove

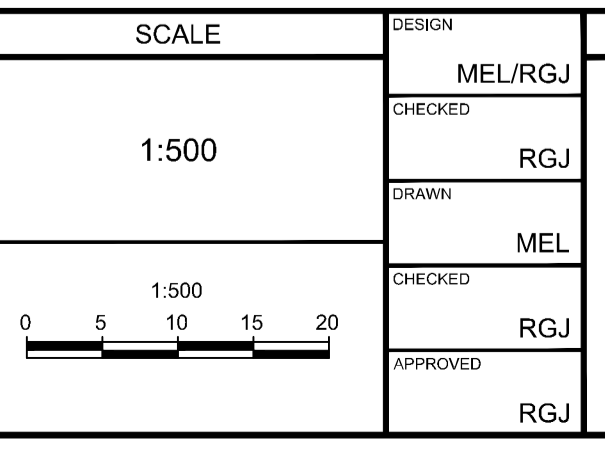
- ### PLANTING NOTES
- This drawing shall be read in conjunction with all relevant Architectural, Engineering, and related drawings and documents.
 - Refer to Engineering Drawings for Grading. Provide drainage as indicated in grading plan. Round all tops and toes of slopes, smoothly. Compact all areas to 95% Standard Proctor. Unless otherwise noted.
 - Refer to Architectural Drawings for site layout.
 - Refer to Engineering Drawings for site servicing.
 - Contractor must contact utility companies for locates prior to excavation or planting.
 - It is essential to use the plans and details in conjunction with the specifications and notes.
 - Existing trees to be retained shall be protected according to the contract detail and specifications.
 - Plant material shall be No. 1. Grade and shall comply with Canadian Standards for Nursery Stock (latest edition) published by the Canadian Nursery Landscape Association.
 - Use plant material with strong fibrous root system free of disease, defects or injuries, and structurally sound. Use trees with straight trunks, well and characteristically branched for species. Obtain approval from consultant of plant material at source prior to digging. All trees and shrubs shall be container grown, potted, WB or BB, as indicated on Plant List. Bare root planting will only be acceptable for certain species and as approved by the Landscape Architect.
 - Plant material substitutions shall not be permitted without the written approval from the consultant, with 48 hours notice, prior to shipping plant material.
 - Plant locations are schematic / approximate only. Contractor shall stake out locations on site for approval by the Landscape Architect prior to installation. The illustrated number of plants shown on the Planting Plan supersedes the estimated number in the Plant List. Contractor to report any discrepancies to the Landscape Architect prior to installation. Contractor will assume full responsibility if the Landscape Architect is not notified.

- ### TREE PROTECTION NOTES
- The following protection measures must be implemented for retained trees, both on site and on adjacent sites, prior to any tree removal or site works and maintained for the duration of construction on site.
 - Under the guidance of a Landscape Architect or Certified Arborist, erect a fence at the critical root zone (CRZ) of trees where the CRZ is established as being 10 centimetres from the trunk of a tree for every centimetre of trunk diameter at breast height. The CRZ is calculated as DBH x 10cm. Refer to the Tree Protection Fence detail. See plan for fence location.
 - When trees to be removed overlap with the CRZ of trees to be preserved, cut roots at the edge of the CRZ and grind down stumps after tree removals, do not pull out stumps. Ensure there is no root pulling or disturbance of the ground within the CRZ.
 - If roots must be cut, roots 20mm or larger should be cut at right angles with clean, sharp horizontal tools without tearing, crushing, or pulling. Refer to City of Ottawa Specification S.P. F-801 Tree Protection. Excavation of Root Zone.
 - Hand work only where required within the CRZ, absolutely no machinery permitted.
 - Do not place any material or equipment within the CRZ of any tree.
 - Do not attach any signs, notices or posters to any tree.
 - Do not disturb, raise or lower the existing grade within the CRZ without approval.
 - Only tunnel or bore when digging within the CRZ of a tree.
 - Do not damage the root system, trunk, or branches of any tree.
 - Ensure that exhaust fumes from all equipment are directed away from any tree canopy.

NOTE:
 THE POSITION OF ALL POLE LINES, CONDUITS, WATERMANS, SEWERS AND OTHER UNDERGROUND AND OVERGROUND UTILITIES AND STRUCTURES IS NOT NECESSARILY SHOWN ON THE CONTRACT DRAWINGS, AND WHERE SHOWN, THE ACCURACY OF THE POSITION OF SUCH UTILITIES AND STRUCTURES IS NOT GUARANTEED, BEFORE STARTING WORK, DETERMINE THE EXACT LOCATION OF ALL SUCH UTILITIES AND STRUCTURES AND ASSUME ALL LIABILITY FOR DAMAGE TO THEM.

NOT FOR
 CONSTRUCTION

No.	REVISION	DATE	BY
5.	REVISED PER CITY COMMENTS / UPDATED SITE PLAN	MAY 29/20	RGJ
4.	UPDATED SITE PLAN	APR 1/20	RGJ
3.	REVISED PER CITY COMMENTS / UPDATED SITE PLAN	JAN 31/20	RGJ
2.	ISSUED FOR SITE PLAN APPROVAL	JULY 18/19	RGJ
1.	ISSUED FOR COORDINATION	JULY 02/19	RGJ



DESIGN		FOR REVIEW ONLY	
MEL/RGJ	CHECKED		
RGJ	DRAWN		
MEL	CHECKED		
RGJ	APPROVED		



NOVATECH
 Engineers, Planners & Landscape Architects
 Suite 200, 240 Michael Cowpland Drive
 Ottawa, Ontario, Canada K2M 1P6
 Telephone: (613) 254-9643
 Facsimile: (613) 254-5867
 Website: www.novatech-eng.com

KEY		QTY	BOTANICAL NAME	COMMON NAME	SIZE	COND.	SPACING
PBB	8	<i>Picea pungens 'Baby Blue'</i>	Baby Blue Colorado Spruce	175cm Ht	WB	As Shown	
PNC	3	<i>Pinus nigra 'Compacta'</i>	Compact Austrian Pine	80cm Ht	WB	As Shown	
CRZ	3	<i>Crataegus crus-galli 'Cruzam'</i>	Crusader Hawthorn	50mm Cal	WB	As Shown	
COC	6	<i>Celtis occidentalis 'Chicagoland'</i>	Chicagoland Hackberry	50mm Cal	WB	As Shown	
SRI	4	<i>Syringa reticulata 'Ivory Silk'</i>	Ivory Silk Japanese Tree Lilac	50mm Cal	WB	As Shown	
Hf	18	<i>Hydrangea paniculata 'SMHPLQF'</i>	Little Quick Fire Hydrangea	2g	PT	As Shown	
Ra	18	<i>Rhus aromatica</i>	Fragrant Sumac	3g	PT	As Shown	

LOCATION
 CITY OF OTTAWA
 2555 SHEFFIELD ROAD
 DRAWING NAME
LANDSCAPE PLAN AND TREE CONSERVATION REPORT
 PROJECT No. 119007
 REV # 5
 DRAWING No. 119007-L
 City Plan No.: 18013

M:\2019\119007\CAD\Landscapes\119007-L.dwg, L1, Jun 03, 2020 - 2:32pm, mlaj

D07-12-19-0124