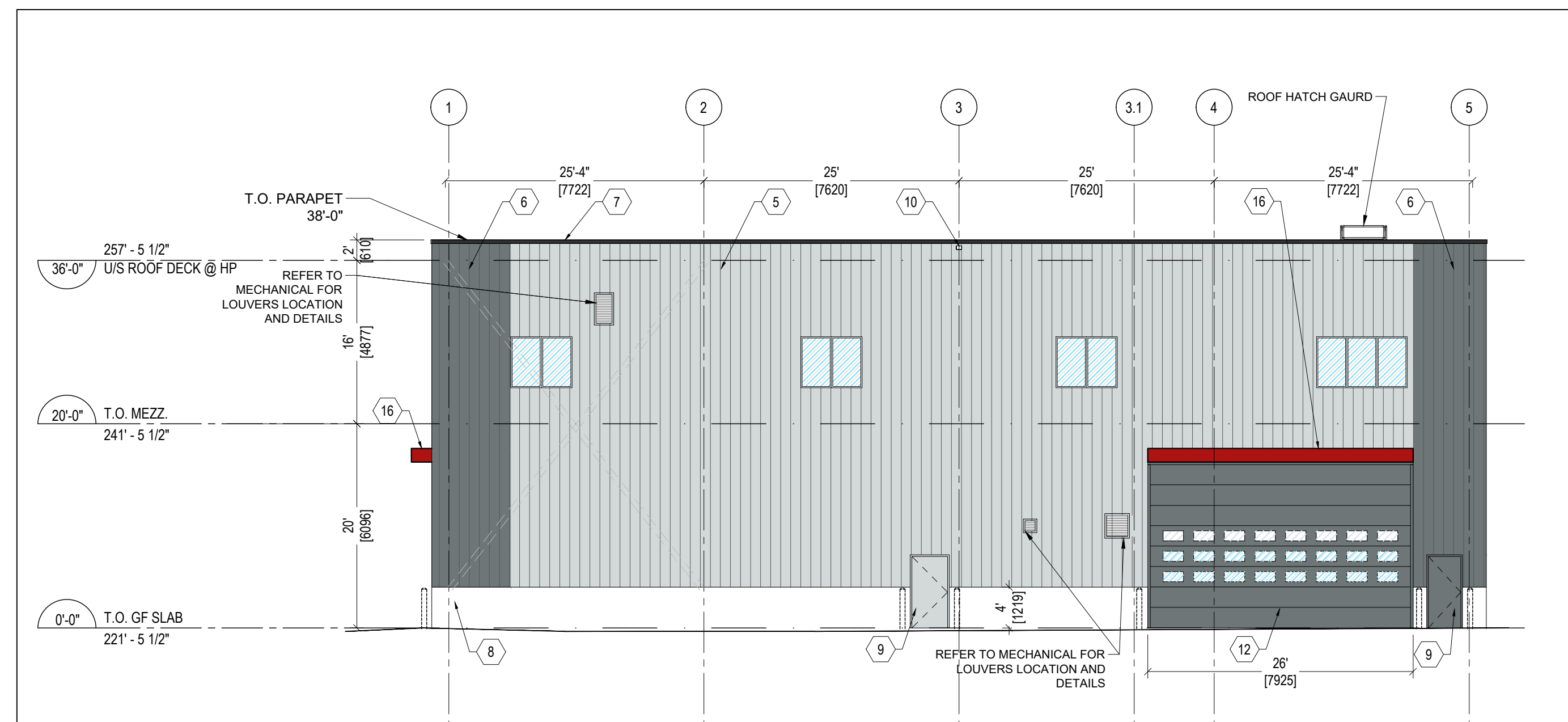
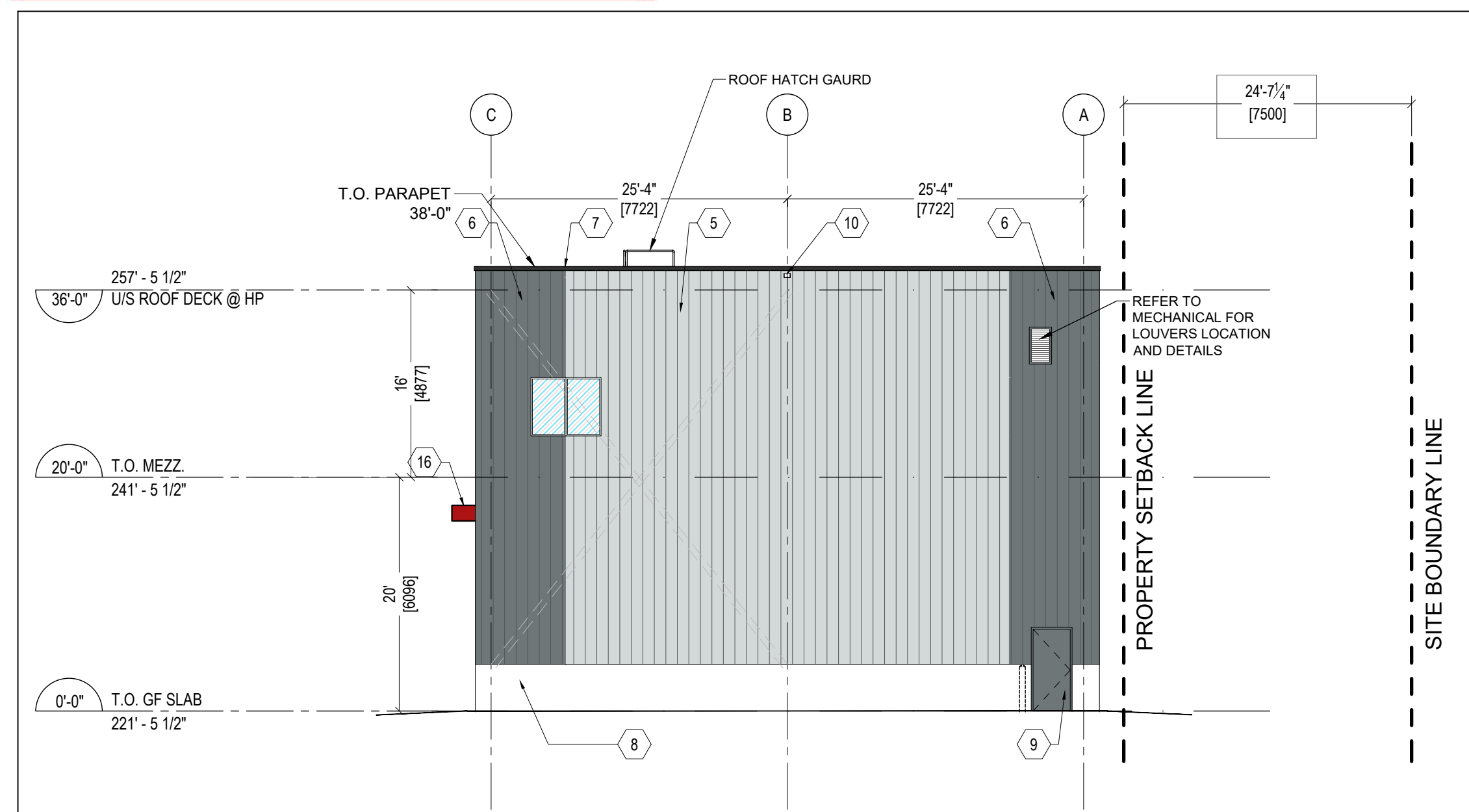


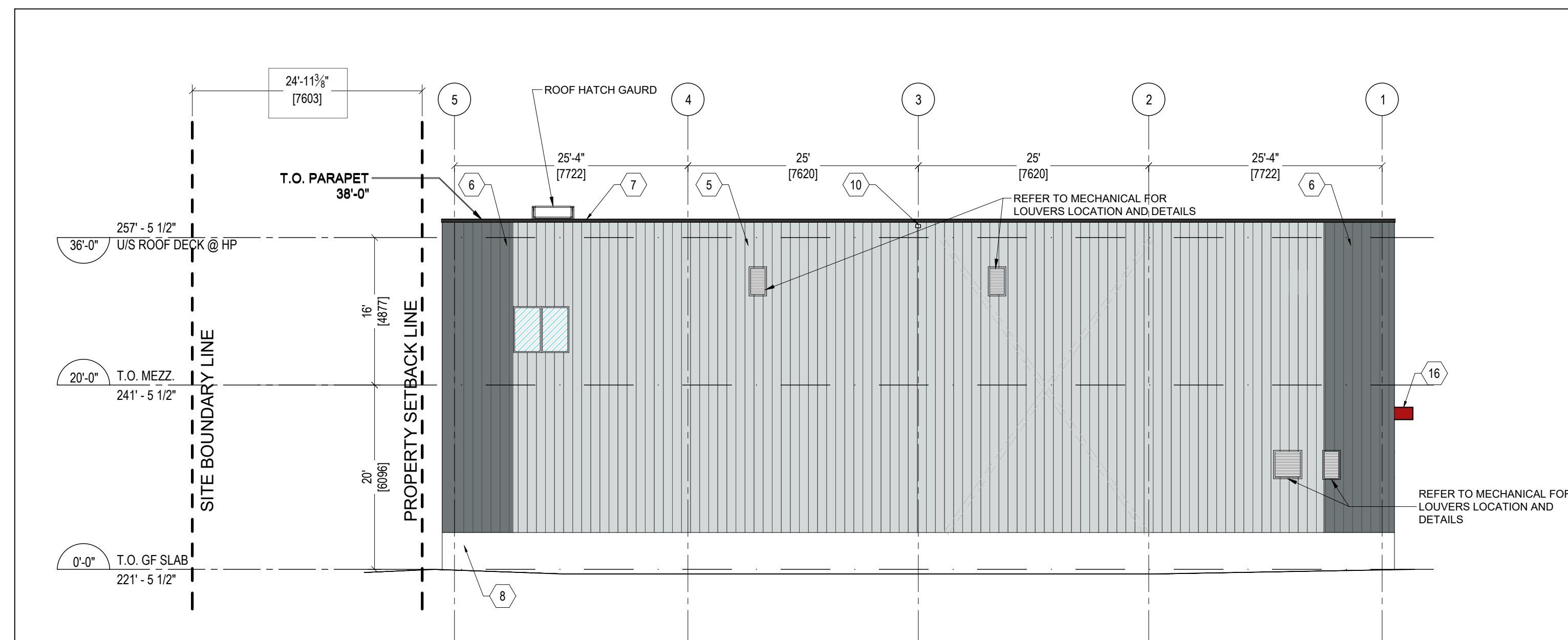
1 WEST ELEVATION
A3.02 SCALE: 3/32"=1'-0"



2 SOUTH ELEVATION
A3.02 SCALE: 3/32"=1'-0"



3 EAST ELEVATION
A3.02 SCALE: 3/32"=1'-0"



4 NORTH ELEVATION
A3.02 SCALE: 3/32"=1'-0"

LEGEND

1	RESERVED
2	RESERVED
3	RESERVED
4	RESERVED
5	PRE-MANUFACTURED INSULATED METAL PANEL SYSTEM, SHADOWLINE VERTICAL ORIENTATION, COLOUR: SOLID FLUOROPOLYMER COLOURS-KYNAR 500/HYLAR 5000 DOVE GREY (TBC)
6	PRE-MANUFACTURED INSULATED METAL PANEL SYSTEM, SHADOWLINE VERTICAL ORIENTATION, COLOUR: SOLID FLUOROPOLYMER COLOURS-KYNAR 500/HYLAR 5000 ZINC GREY (TBC)
7	PREFINISHED METAL FLASHING C/W DRIP EDGE, COLOUR: BLACK
8	POURED CONCRETE
9	INSULATED HOLLOW METAL DOOR, COLOUR TO MATCH KINGSPAN IMP CHARCOAL
10	PREFIN METAL SCUPPER, COLOUR: BLACK
11	RESERVED
12	HIGH SPEED ROLL-UP OVERHEAD DOOR C/W MOTOR, TRACK AND HARDWARE, COLOUR TO MATCH KINGSPAN IMP CHARCOAL
13	RESERVED
14	RESERVED
15	RESERVED
16	RED METAL CANOPY COLOUR RED TO MATCH ALUMINUM COMPOSITE PANEL, VINEST COLOUR: SOLID TRC RED 4-TRC-30.

SYMBOLS LEGEND

A	GRID LINE & DIMENSIONS REFER TO FLOOR PLANS
W 1	WINDOW TYPE NUMBER REFER TO WINDOW SCHEDULE
1	FINISH MATERIAL TAG


1. Contractor must verify all job dimensions, all drawings, details, specifications and report any discrepancies to owners before proceeding with work.
2. All drawings and specifications are instruments of service and the property of the architects which must be returned at the completion of the work, and may not be reproduced without their written permission.

ref	description	date
02	ISSUED FOR SPC RESPONSE 2	2020-03-13
01	ISSUED FOR SPC RESPONSE 1	2020-01-17

revisions



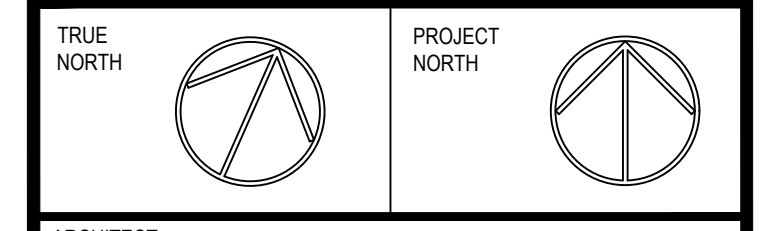
APPROVED
By Lily Xu at 5:14 pm, Sep 14, 2020



LILY XU, MCIP, RPP
MANAGER, DEVELOPMENT REVIEW SOUTH
PLANNING, INFRASTRUCTURE & ECONOMIC
DEVELOPMENT DEPARTMENT, CITY OF OTTAWA

DESIGN ARCHITECT	NICHOLAS CARAGIANIS ARCHITECT INC. 137 Pamela St. Ottawa, ON. K1S 3K9 tel: (613) 237-6801 fax: (613) 237-8289 email: shickey@ncarchitect.ca
STRUCTURAL ENGINEER	LEEKOR 359 Kent, Suite 501, Ottawa, ON. K2P 0R6 tel: (613) 234-0886 fax: (613) 233-4413 email: lee@leekor.com
MECHANICAL/ELECTRICAL	MIRITON 1716 Woodward Drive, Suite 200, Ottawa, ON. K2C 0P8 tel: (613) 722-5486 email: johnnie.chahwan@minton.com
CIVIL ENGINEER	NOVATECH 240 Michael Cowpland Drive, Suite 200, Ottawa, ON. K2M 1P6 tel: (613) 254-9643 fax: (613) 254-5867 email: f.thauvette@novatech-eng.com
PLANNING & URBAN DESIGN	NOVATECH 240 Michael Cowpland Drive, Suite 200, Ottawa, ON. K2M 1P6 tel: (613) 254-9643 fax: (613) 254-5867 email: t.glichrist@novatech-eng.com

OWNER:
AMERICAN IRON & METAL
9100, BOUL. HENRI-BOURASSA EST
MONTREAL, QUEBEC H1E 2S4
tel: 514-494-2000 aim-global.com



ARCHITECT
nicholas caragianis architect inc.
137 Pamela Street, Ottawa, ON. K1S 3K9
t: 613 237 6801
f: 613 237 8989
e: info@ncarchitect.ca
www.ncarchitect.ca

PROJECT & LOCATION
METAL RECYCLING PLANT
2555 SHEFFIELD ROAD
OTTAWA, ONT.

OFFICE FILE NUMBER: 19023

TITLE OF DRAWING
**BUILDING B:
ELEVATIONS**

SCALE: 3/32" = 1'-0"
DATE: MARCH 2019
DRAWN BY: GL, SH, CC, AA

DRAWING #
A3.02