

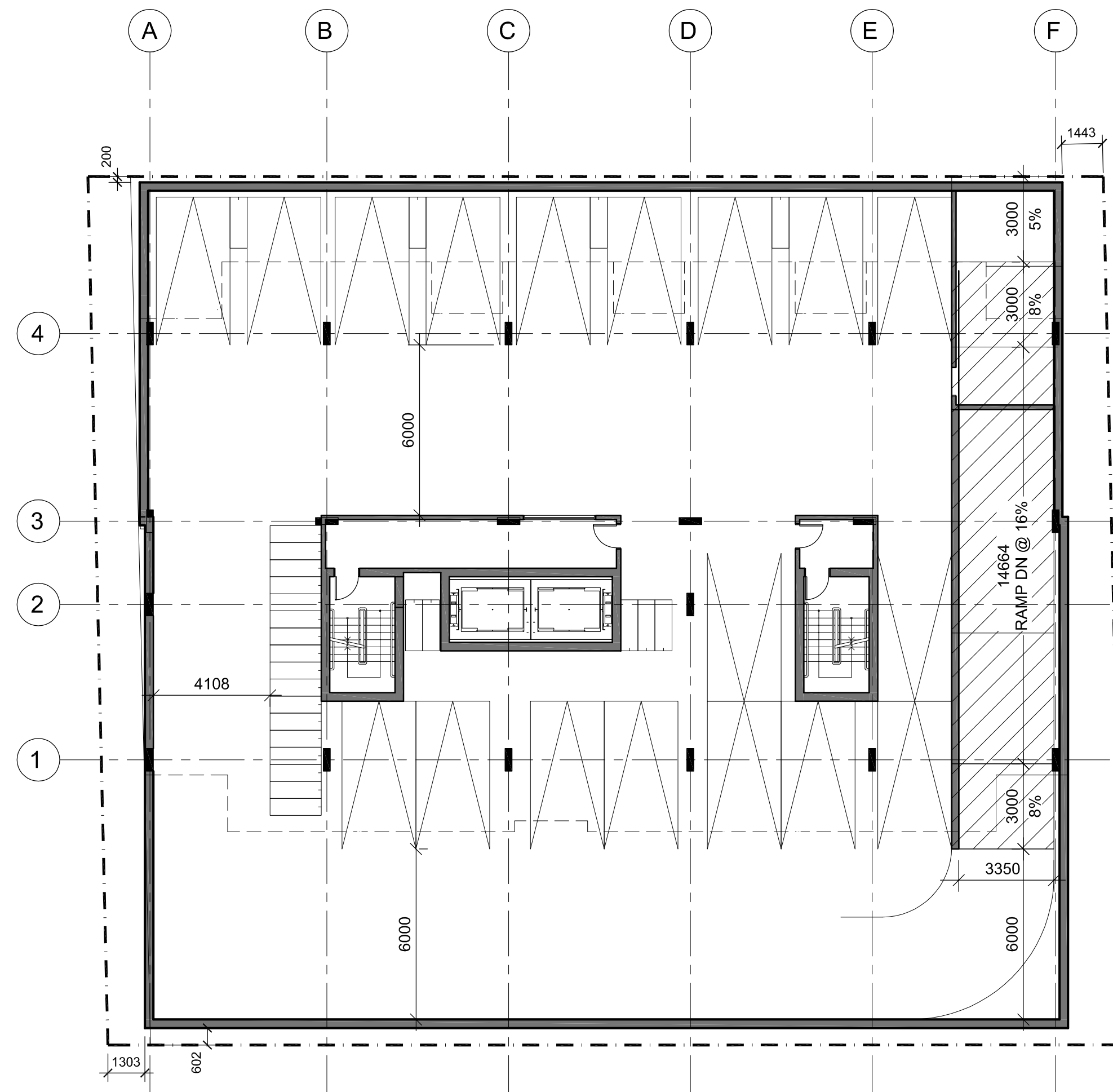
IT IS THE RESPONSIBILITY OF THE APPROPRIATE CONTRACTOR TO CHECK AND VERIFY ALL DIMENSIONS ON SITE AND TO REPORT ALL ERRORS AND/OR OMISSIONS TO THE ARCHITECT.

ALL CONTRACTORS MUST COMPLY WITH ALL PERTINENT CODES AND BY-LAWS. THIS DRAWING MAY NOT BE USED FOR CONSTRUCTION UNTIL SIGNED BY THE ARCHITECT.

DO NOT SCALE DRAWINGS. COPYRIGHT RESERVED.

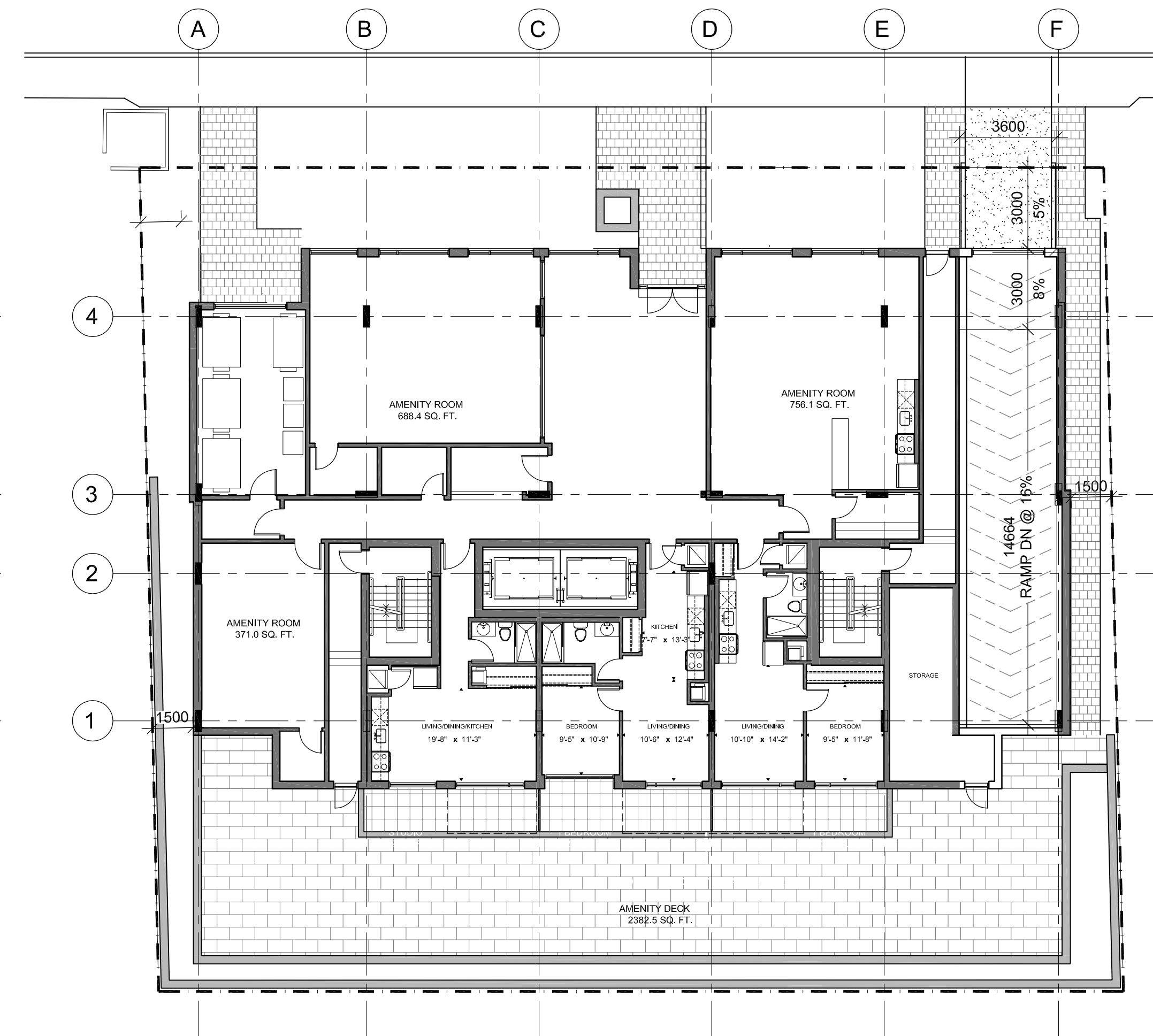
NOTATION SYMBOLS:

- (N) INDICATES DRAWING NOTES. LISTED ON EACH SHEET.
- (A) INDICATES ASSEMBLY TYPE. REFER TO TYPICAL ASSEMBLIES SCHEDULE.
- (W) INDICATES WINDOW TYPE. REFER TO WINDOW ELEVATIONS AND DETAILS ON A300 SERIES.
- (D) INDICATES DOOR TYPE. REFER TO DOOR SCHEDULES AND DETAILS ON A300 SERIES.
- (1) - (20) - DETAIL NUMBER
- (C) TITLE
- (S) SCALE
- (R) DETAIL REFERENCE PAGE
- (X) DETAIL CROSS REFERENCE PAGE



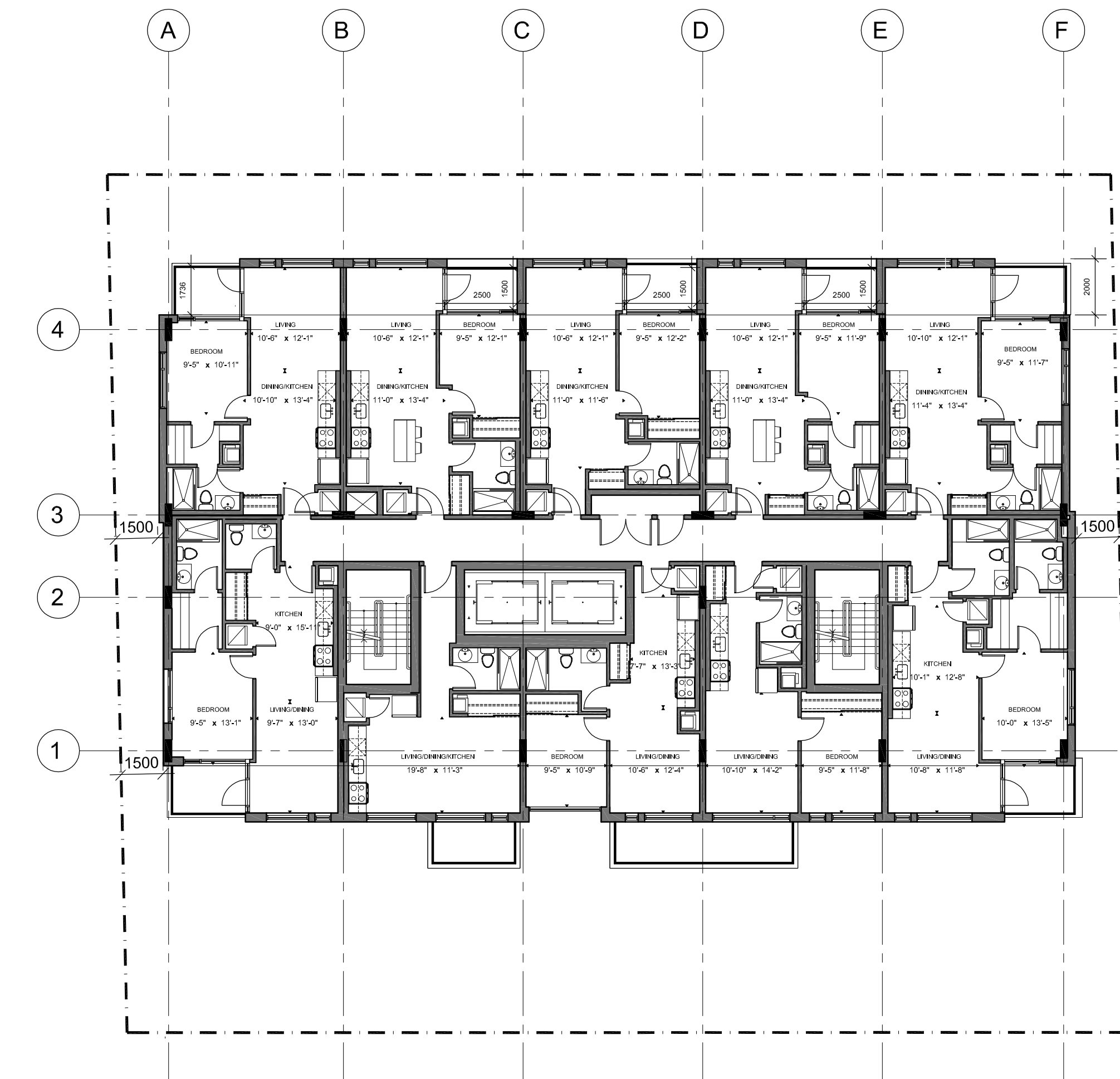
BASEMENT PLAN

CONSTRUCTION AREA
PARKING LEVEL
10412.2 SQ. FT.



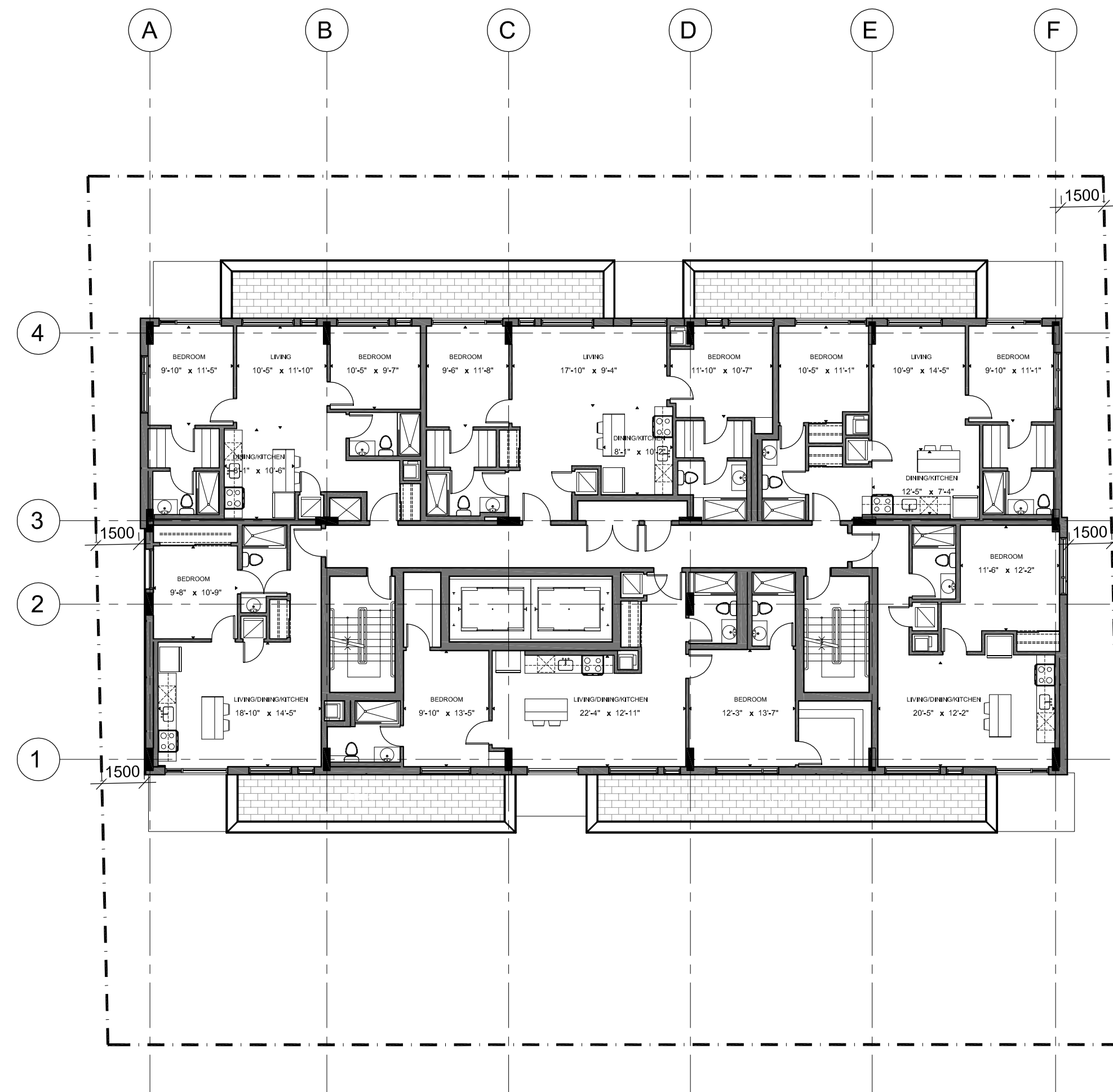
GROUND FLOOR PLAN

CONSTRUCTION AREA ZONING AREA
2nd to 5th FLOOR 1381 sq. ft.
6765.5 SQ. FT.



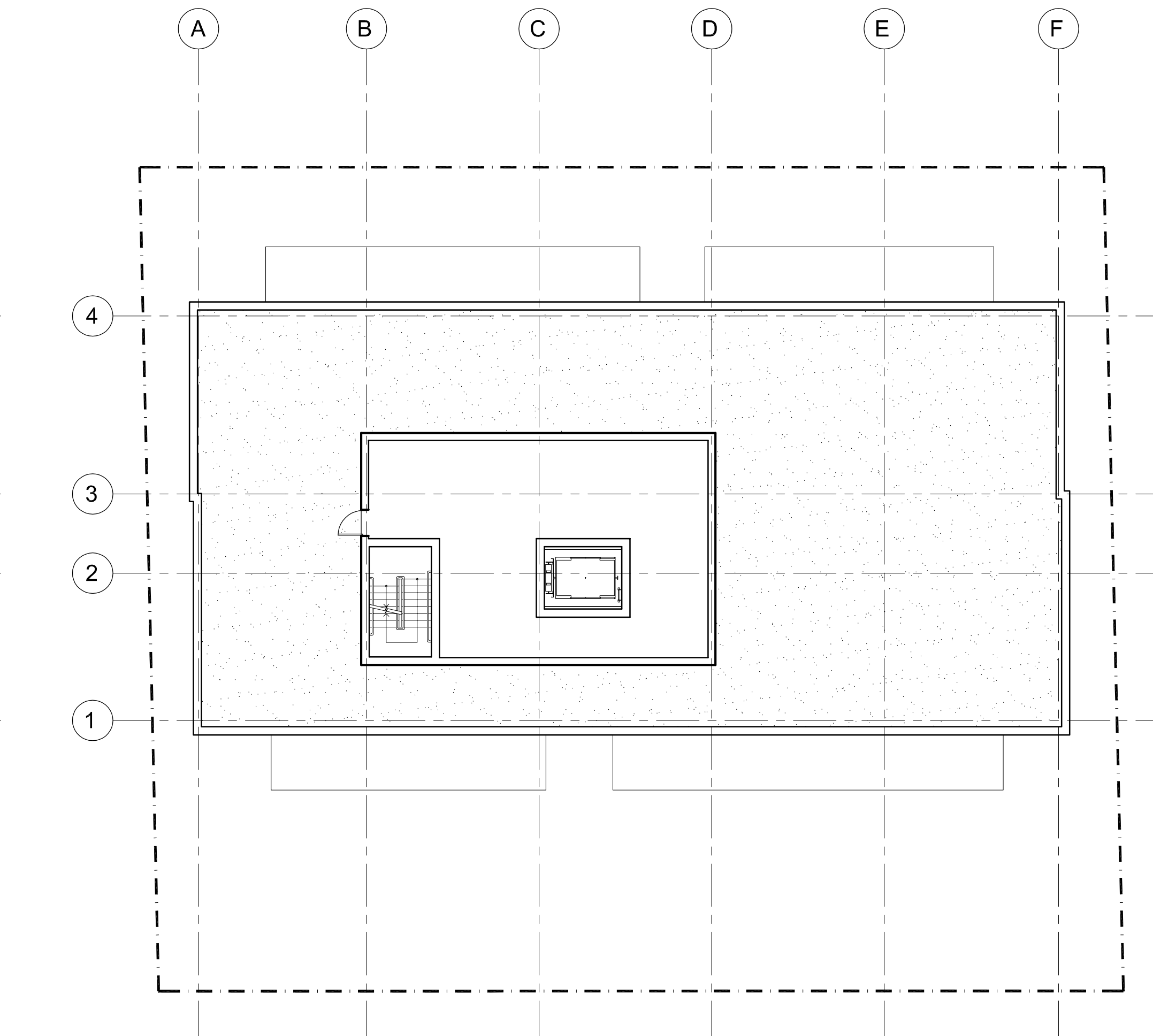
2nd to 5th FLOOR PLAN

CONSTRUCTION AREA ZONING AREA
2nd to 5th FLOOR 5341.6 SQ. FT.
6617.7 SQ. FT.



6th FLOOR PLAN

CONSTRUCTION AREA ZONING AREA
6th FLOOR 4470 sq. ft.
5613.1 SQ. FT.



ROOF PLAN

CONSTRUCTION AREA
MECHANICAL
1,216 sq. ft.

No.	DESCRIPTION	DATE
1	ISSUED FOR SPC & ZONING AMENDMENT	June 30, 19
2	ISSUED FOR CONSULTANT REVIEW	June 04, 19
3	ISSUED FOR DESIGN CONCEPT	Dec. 19, 18

REVISIONS:

No.	DESCRIPTION	DATE
1	ISSUED FOR SPC & ZONING AMENDMENT	June 30, 19
2	ISSUED FOR CONSULTANT REVIEW	June 04, 19
3	ISSUED FOR DESIGN CONCEPT	Dec. 19, 18

ARCHITECT SEAL: **ONTARIO ASSOCIATION OF ARCHITECTS** Roderick Lahey ARCHITECTS LICENCE #335

SEAL DATE: STAMP DATE

NORTH ARROW:

CLIENT: **JB HOLDINGS INC.**

107 Pretoria Ave. Ottawa, Ontario

ARCHITECT: **rla/architecture** roderick lahey architect inc.

56 beech street, ottawa, ontario K1S 3J6
t. 613.724.9932 f. 613.724.1209 rlaarchitecture.ca

PROJECT TITLE:
24-30 PRETORIA AVENUE
OTTAWA ONTARIO

SHEET TITLE:
FLOOR PLANS

DRAWN: S.S.	CHECKED: R.V.
SCALE: 1:150	SHEET No. A101
PROJECT No. 1836	

