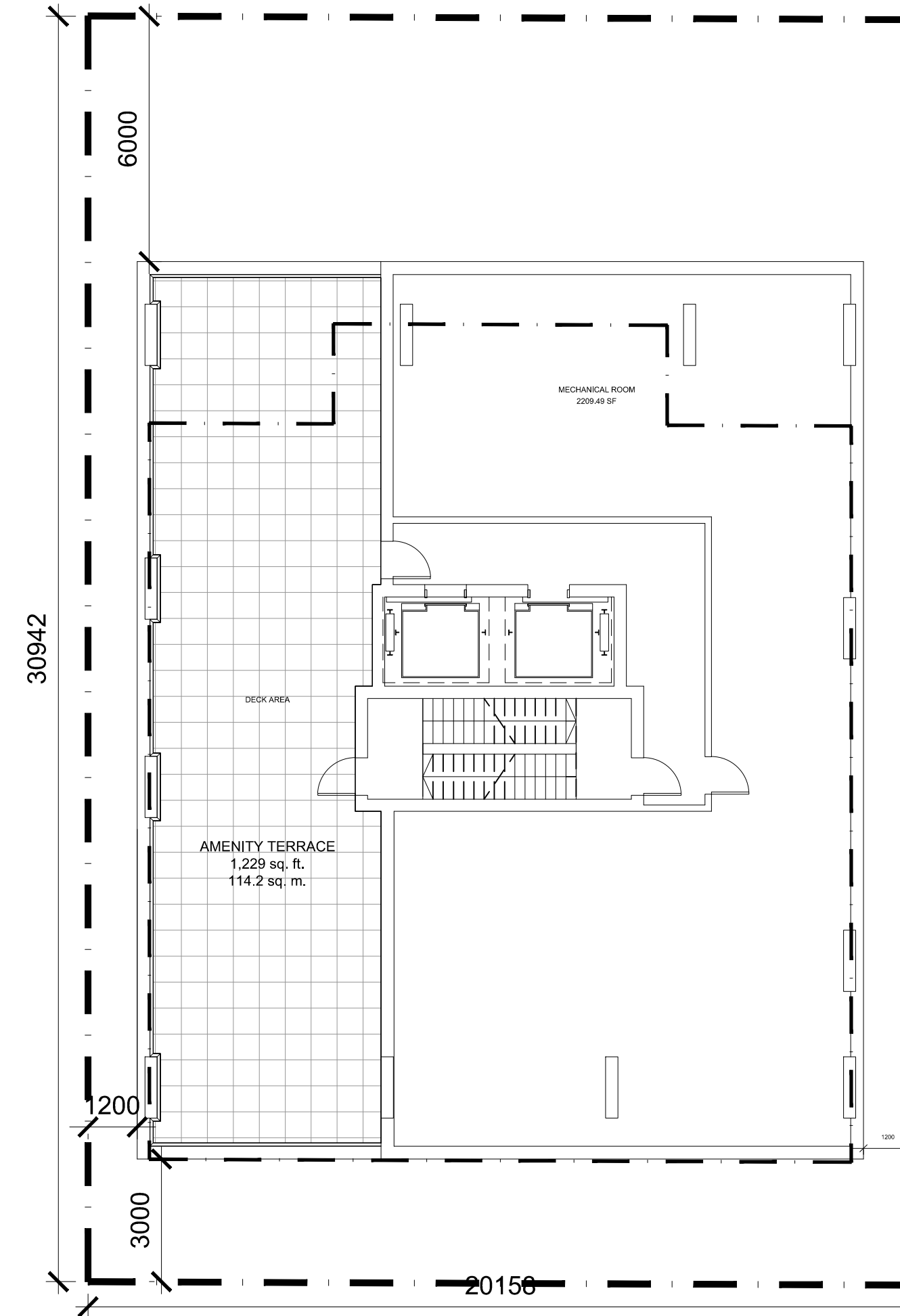
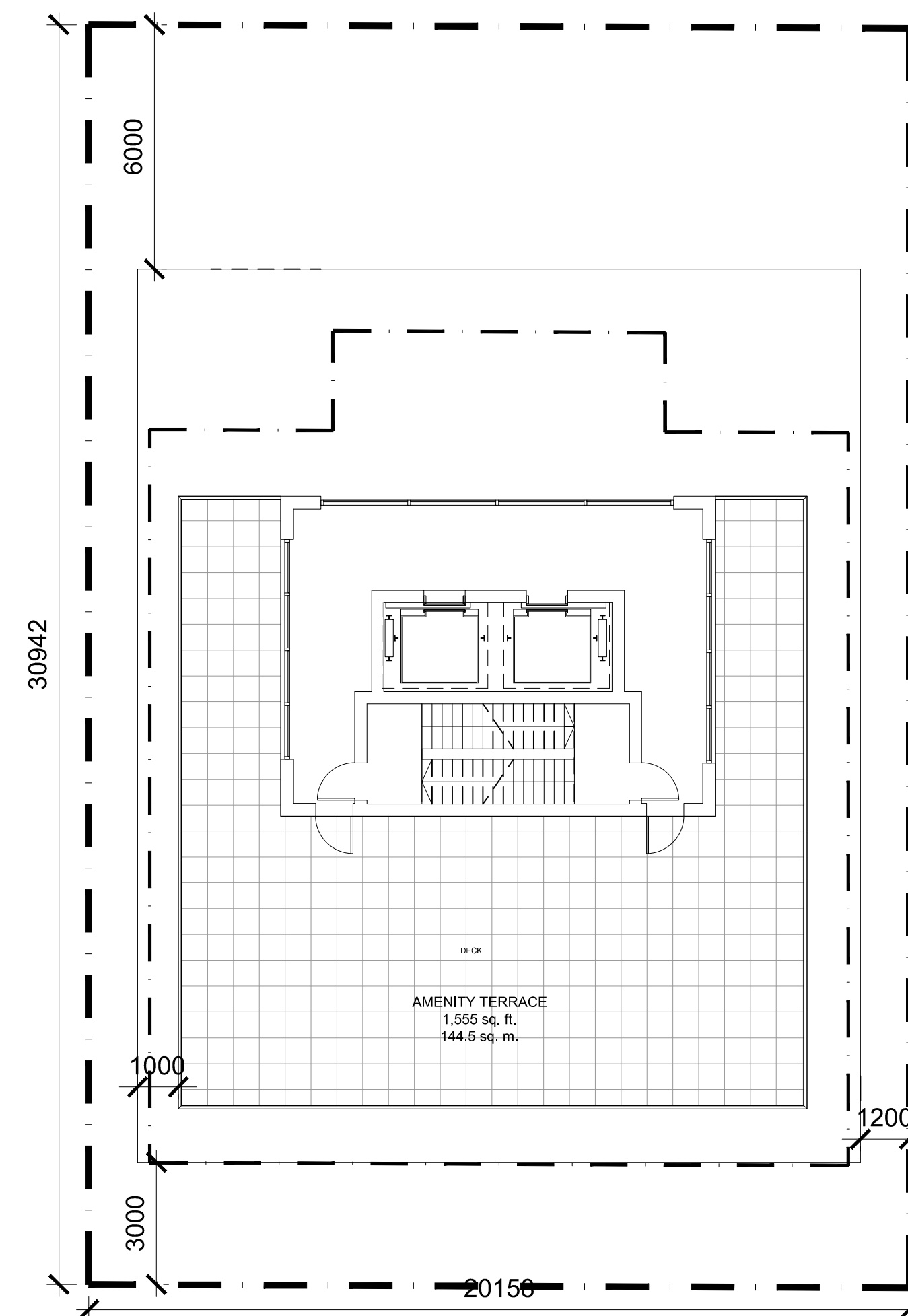


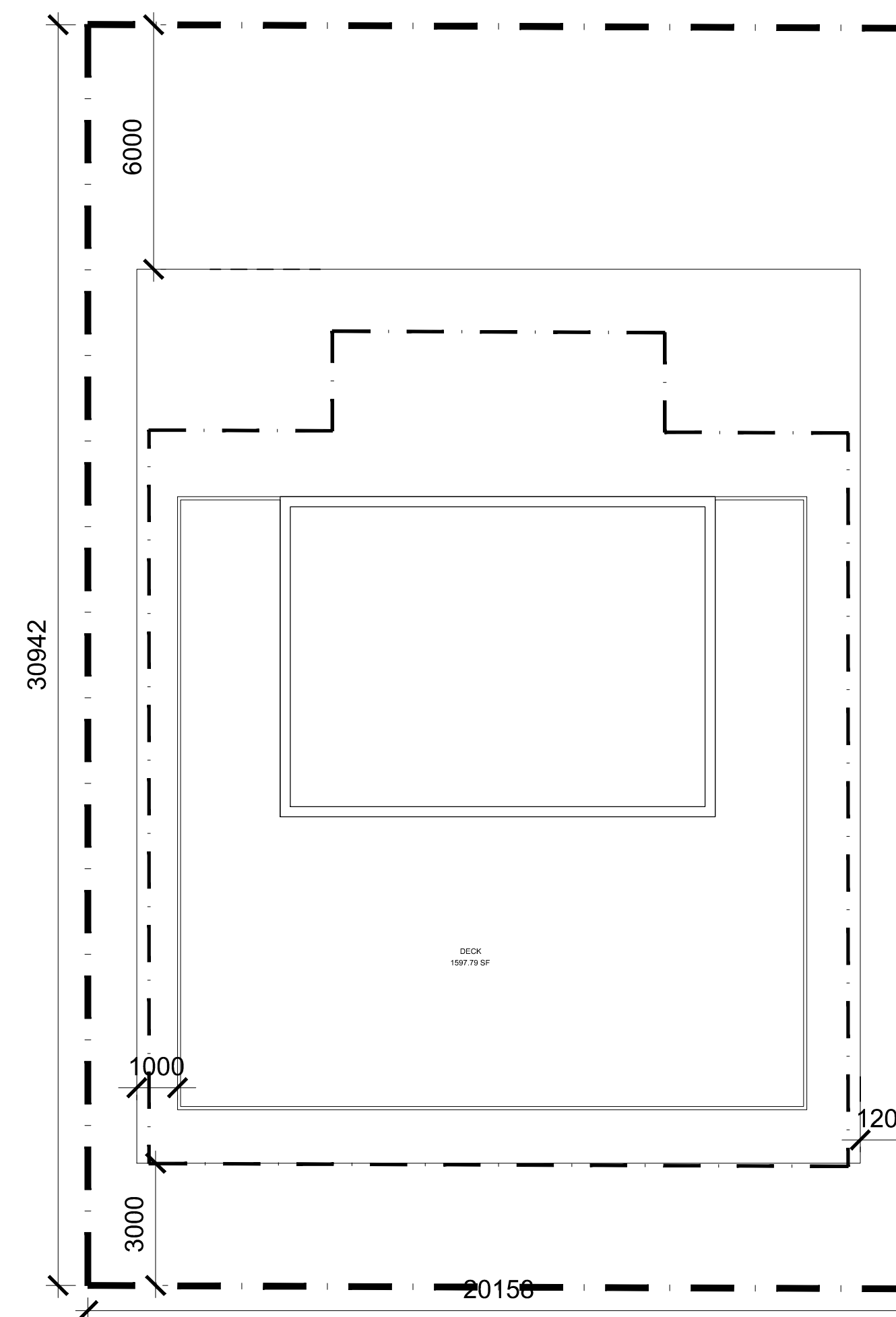
7th to 21st FLOOR
CONSTRUCTION AREA
= 4194 SQ. FT.



22nd LEVEL MECHANICAL
CONSTRUCTION AREA
= 2813 SQ. FT.



23rd LEVEL MECHANICAL
CONSTRUCTION AREA
= 903 SQ. FT.



23rd LEVEL ROOF

IT IS THE RESPONSIBILITY OF THE APPROPRIATE CONTRACTOR TO CHECK AND VERIFY ALL DIMENSIONS ON SITE AND TO REPORT ALL ERRORS AND/OR OMISSIONS TO THE ARCHITECT.
ALL CONTRACTORS MUST COMPLY WITH ALL PERTINENT CODES AND BY-LAWS.
THIS DRAWING MAY NOT BE USED FOR CONSTRUCTION UNTIL SIGNED BY THE ARCHITECT.
DO NOT SCALE DRAWINGS.
COPYRIGHT RESERVED.

NOTATION SYMBOLS:

- (01) INDICATES DRAWING NOTES, LISTED ON EACH SHEET.
- (02) INDICATES ASSEMBLY TYPE; REFER TO TYPICAL ASSEMBLIES SCHEDULE.
- (03) INDICATES WINDOW TYPE; REFER TO WINDOW ELEVATIONS AND DETAILS ON A800 SERIES.
- (04) INDICATES DOOR TYPE; REFER TO DOOR SCHEDULE AND DETAILS ON A800 SERIES.
- (05) TITLE SCALE
DETAIL REFERENCE PAGE
DETAIL CROSS REFERENCE PAGE

GENERAL NOTES:

- (A) REFER TO TYPICAL ASSEMBLIES SHEET FOR WALL, PARTITION, ROOF CEILING & FLOOR TYPES.
- (B) FOR DOOR TYPES AND HARDWARE REQUIREMENTS REFER TO DOOR SCHEDULE ON A800 SERIES.
- (C) ALL INTERIOR DIMENSIONS ARE TAKEN FROM THE FACE OF WALL FINISH.
- (D) ALL EXTERIOR DIMENSIONS ARE TAKEN FROM THE FACE OF CLADDING.
- (E) ALL EXTERIOR WALLS ARE TO BE TYPE 'W1' UNLESS NOTED OTHERWISE.
- (F) ALL INTERIOR PARTITIONS ARE TO BE TYPE 'P1' UNLESS NOTED OTHERWISE.
- (G) ALL REINFORCED CONCRETE SUSPENDED SLABS, COLUMNS & BEAMS HAVE A MIN. FRR OF 2 HRS (AS DETERMINED BY CBC S8-2) UNLESS OTHERWISE STATED.

No.	DESCRIPTION	DATE
2	ISSUED FOR SPC & ZONING AMENDMENT	July 16, 19
1	ISSUED FOR CLIENT REVIEW	June 4, 18

REVISIONS:

ARCHITECT SEAL:

NORTH ARROW:

SEAL DATE: STAMP DATE

upscale HOMES
324 Donald Street, Ottawa, ON, K1K 1M5

rla/architecture
56 Beech Street, Ottawa, Ontario K1S 3J6
1.613.724.9932 f.613.724.1209 www.rodericklahey.ca

PROJECT TITLE:
341 GLOUCESTER STREET
OTTAWA ONTARIO

SHEET TITLE:
UPPER LEVEL PLAN

DRAWN: RV	CHECKED: SS
SCALE: 1:125	SHEET No. A101
PROJECT No. 1735	