



OTTAWA-CARLETON DISTRICT SCHOOL BOARD

2	0	2019/10/09	ISSUED FOR SITE PLAN CONTROL COMMENTS
1	0	2019/07/31	ISSUED FOR SITE PLAN CONTROL

LES IDÉES, CONCEPTS, DISPOSITIONS ET PLANS MONTRÉS OU REPRÉSENTÉS PAR CE DESSIN APPARTIENNENT À EDWARD J. CUHACI AND ASSOCIATES ARCHITECTS INC. ET ONT ÉTÉ CRÉÉS, ET DÉVELOPPÉS POUR ÊTRE UTILISÉS DANS LE CADRE DU PRÉSENT PROJET. ILS NE DOIVENT PAS ÊTRE UTILISÉS À D'AUTRES FINS NI COMMUNIQUÉS À QUI QUE CE SOIT SANS LA PERMISSION ÉCRITE DE EDWARD J. CUHACI AND ASSOCIATES ARCHITECTS INC.

L'ARCHITECTE DÉCLINE TOUTE RESPONSABILITÉ DÉCOULANT DE PROBLÈMES FAISANT SUITE AU NON RESPECT DES PLANS ET DEVIS OU DE L'INTENTION DU CONCEPT QU'ILS TRANSMETTENT, OU DE TOUTS PROBLÈMES POUVANT RÉSULTER DU DÉFAUT DE TIERS D'OBTENIR OU DE SUIVRE LES INSTRUCTIONS DE L'ARCHITECTE RELATIVEMENT AUX ERREURS, OMISSIONS, INCOHÉRENCES, AMBIGUITÉS OU CONTRADICTIONS ALLEGUÉS.

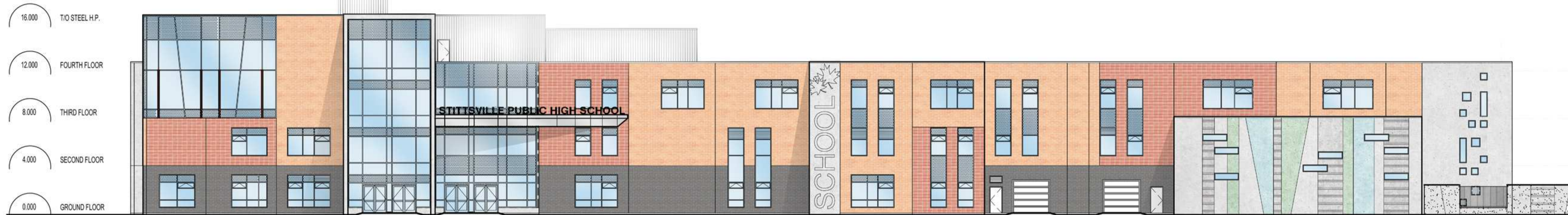
L'ENTREPRENEUR DOIT VÉRIFIER TOUTES LES DIMENSIONS SUR PLACE ET INFORMER L'ARCHITECTE DE TOUT ÉCART AVANT LE DÉBUT DES TRAVAUX. NE PAS MESURER LES DESSINS À L'ÉCHELLE.

ALL IDEAS, DESIGNS, ARRANGEMENTS, AND PLANS INDICATED OR REPRESENTED BY THIS DRAWING ARE OWNED BY AND THE PROPERTY OF EDWARD J. CUHACI AND ASSOCIATES INC. AND WERE CREATED, EVOLVED, AND DEVELOPED FOR USE ON AND IN CONNECTION WITH THE SPECIFIED PROJECT. NONE OF THE IDEAS, DESIGNS, ARRANGEMENTS OR PLANS SHALL BE USED BY OR DISCLOSED TO ANY PERSON, FIRM, OR CORPORATION FOR ANY PURPOSE WHATSOEVER WITHOUT THE WRITTEN PERMISSION OF EDWARD J. CUHACI AND ASSOCIATES INC.

THE ARCHITECT WAIVES ANY AND ALL RESPONSIBILITY AND LIABILITY FOR PROBLEMS WHICH ARISE FROM FAILURE TO FOLLOW THESE PLANS, SPECIFICATIONS, AND THE DESIGN INTENT THEY CONVEY, OR FOR PROBLEMS WHICH ARISE FROM OTHERS' FAILURE TO OBTAIN AND/OR FOLLOW THE ARCHITECT'S GUIDANCE WITH RESPECT TO ANY ERRORS, OMISSIONS, INCONSISTENCIES, AMBIGUITIES OR CONFLICTS WHICH ARE ALLEGED.

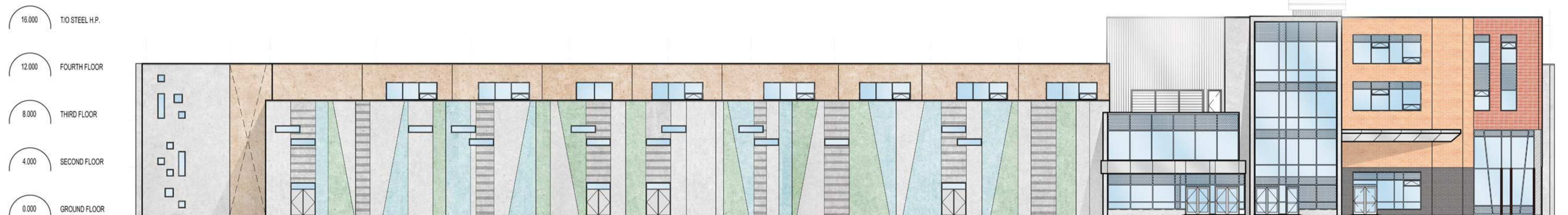
CONTRACTOR TO VERIFY ALL DIMENSIONS AND NOTIFY THE ARCHITECT OF ANY DISCREPANCIES BEFORE WORK COMMENCES. DO NOT SCALE DRAWINGS

U T S R Q P N M L K J H G F E D C B A  
 1000 10000 3956 3009 7000 9290 7551 7275 8122 7000 7000 8253 8535 8100 8842 3330 7052



1 NORTH ELEVATION  
A200SP 1:200

A B C D E F G H J K L M N P Q R S T U  
 7052 3330 8842 8100 8535 8253 7000 7000 8122 7434 7551 11997 7000 2970 3995 10000 1000



2 SOUTH ELEVATION  
A200SP 1:200

116 115 114 113 112 111 110 109 108 107 106 105 104 103 102 101  
 9282 3820 3450 7250 3083 4215 3327 2693 3298 7250 4527 1982 277 3398 7498



3 EAST ELEVATION  
A200SP 1:200

LEGEND

- TILT-UP TEXTURED CONCRETE PANELS
- TILT-UP LIGHT GRAY CONCRETE PANELS
- TILT-UP LIGHT BLUE CONCRETE PANELS
- TILT-UP LIGHT AQUA CONCRETE PANELS
- TILT-UP LIGHT GREEN CONCRETE PANELS
- TILT-UP LIGHT LIME-GREEN CONCRETE PANELS
- TILT-UP SALMON CONCRETE PANELS
- TILT-UP PANEL WITH BRICK VENEER: COLOUR 1
- TILT-UP PANEL WITH BRICK VENEER: COLOUR 2
- TILT-UP PANEL WITH BRICK VENEER: COLOUR 3
- COMPOSITE ALUMINUM PANEL CANOPIES
- PREFINISHED METAL SIDING - VERTICAL INSTALLATION
- SPANDEL GLAZING WITH INSULATED BACK PAN BEHIND IN ALUMINUM CURTAIN WALL
- VISION INSULATED GLASS UNITS IN ALUMINUM CURTAIN WALL
- OPERABLE WINDOW WITH INSULATED GLASS UNITS

ELEVATION NOTES

- EE-01 19mm CONTROL JOINT BETWEEN TILT-UP PANELS
- EE-02 TYPE 1 CURTAIN WALL SYSTEM
- EE-03 TYPE 2 CURTAIN WALL SYSTEM
- EE-04 PRESSED METAL DOOR AND FRAME
- EE-05 CONCRETE FINISH
- EE-06 COMPOSITE ALUMINUM PANEL CLAD CANOPY
- EE-07 ALUMINUM SWING DOOR
- EE-08 PRE-FINISHED METAL CAP FLASHING
- EE-09 ALUMINUM GARAGE DOOR
- EE-10 FIRE DEPARTMENT CONNECTION
- EE-11 HOSE BIB
- EE-12 LOUVER REFER TO MECHANICAL
- EE-13 19mm WIDE REVEAL IN TILT-UP CONCRETE PANEL
- EE-14 13mm LINE OF RECESS FOR BRICK BELOW
- EE-15 PRESSED METAL DOOR, FRAME AND GLAZED SCREEN
- EE-16 PREFINISHED METAL SIDING
- EE-17 COMPOSITE ALUMINUM PANEL JOINT. REFER TO REFLECTED CEILING PLANS FOR JOINT ALIGNMENT
- EE-18 POURED CONCRETE ARCHITECTURAL SCREEN WALL. REFER TO SITE DETAILS FOR INFORMATION
- EE-19 CHILLER NOISE BARRIER
- EE-20 FUTURE SAW DUST COLLECTOR

**EDWARD J CUHACI & ASSOCIATES ARCHITECTS Inc.**  
 171 Slater St., Suite 100, Ottawa, Ontario, K1P 5H7  
 Fax: (613) 236-1944 Telephone: (613) 236-7135 E-mail: info@cuhaci.com

PROJECT TITLE/TITRE DU PROJET  
**NEW STITTSVILLE HIGH SCHOOL**  
 700 COPE DRIVE  
 OTTAWA, ONTARIO  
 OTTAWA - CARLETON DISTRICT SCHOOL BOARD  
 NEPEAN, ON K2H 6L3  
 133 GREENBANK ROAD

DRAWING TITLE/TITRE DU DESSIN  
**ELEVATIONS**

SCALE ECHELLE	AS SHOWN	PROJ. No 1909	ISSUE No ---	REV No ---
DRAWN BY DESSINE PAR	CM/MS	DRAWING/DESSIN		
CHECKED BY VÉRIFIÉ PAR	JJ	<b>A200SP</b>		
DATE	2019	ACAD FILE/FICHER: 1909-A200SP.DWG		

Plot Date: 26/11/2019 Plot Time: 9:55:02 AM Plot By: CASSANDRA BANG Plot Stamp For: EAC USE ONLY  
 Plotter: DWG TO PDF PLOT3 Page Setup: -----

D07-12-19-0144





OTTAWA-CARLETON DISTRICT SCHOOL BOARD

ISSUE NO.	REV. NO.	DATE	ISSUE
2	0	2019/12/09	ISSUED FOR SITE PLAN CONTROL COMMENTS
1	0	2019/07/31	ISSUED FOR SITE PLAN CONTROL

LES IDÉES, CONCEPTS, DISPOSITIONS ET PLANS MONTRES OU REPRÉSENTÉS PAR CE DESSIN APPARTIENNENT À EDWARD J. CUHACI AND ASSOCIATES ARCHITECTS INC. ET ONT ÉTÉ CRÉÉS, ET DÉVELOPPÉS POUR ÊTRE UTILISÉS DANS LE CADRE DU PRÉSENT PROJET. ILS NE DOIVENT PAS ÊTRE UTILISÉS À D'AUTRES FINS NI COMMUNIQUÉS À QUI QUE CE SOIT SANS LA PERMISSION ÉCRITE DE EDWARD J. CUHACI AND ASSOCIATES ARCHITECTS INC.

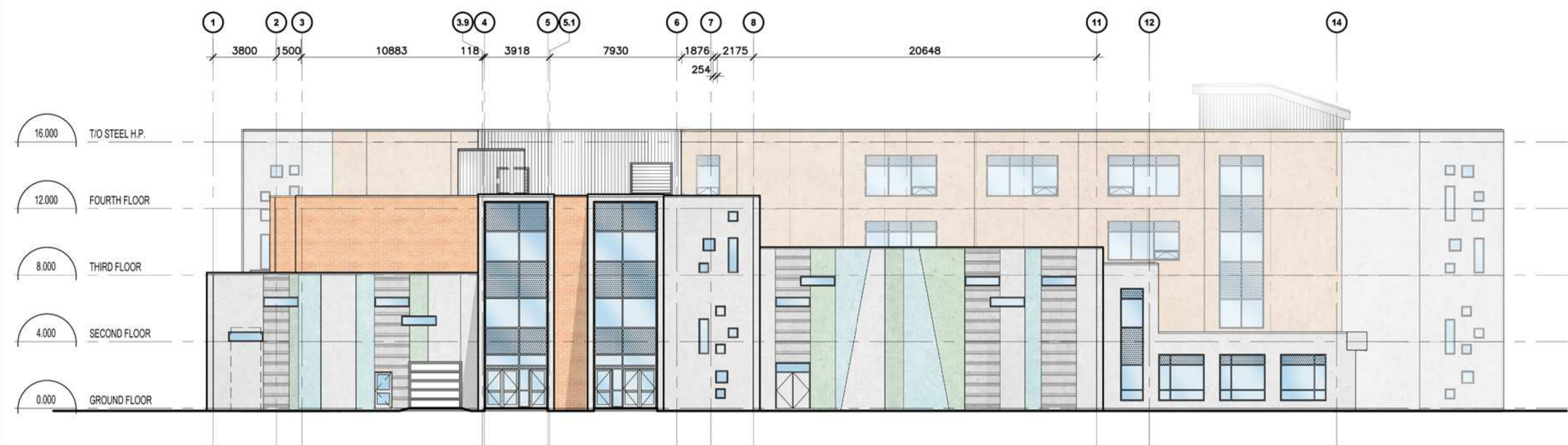
L'ARCHITECTE DÉCLINE TOUTE RESPONSABILITÉ DÉCOULANT DE PROBLÈMES FAISANT SUITE AU NON RESPECT DES PLANS ET DEVIS OU DE L'INTENTION DU CONCEPT QU'ILS TRANSMETTENT, OU DE TOUTS PROBLÈMES POUVANT RÉSULTER DU DÉFAUT DE TIERS D'OBTENIR OU DE SUIVRE LES INSTRUCTIONS DE L'ARCHITECTE RELATIVEMENT AUX ERREURS, OMISSIONS, INCOHÉRENCES, AMBIGUITÉS OU CONTRADICTIONS ALLEGUÉS.

L'ENTREPRENEUR DOIT VÉRIFIER TOUTES LES DIMENSIONS SUR PLACE ET INFORMER L'ARCHITECTE DE TOUT ÉCART AVANT LE DÉBUT DES TRAVAUX. NE PAS MESURER LES DESSINS À L'ÉCHELLE.

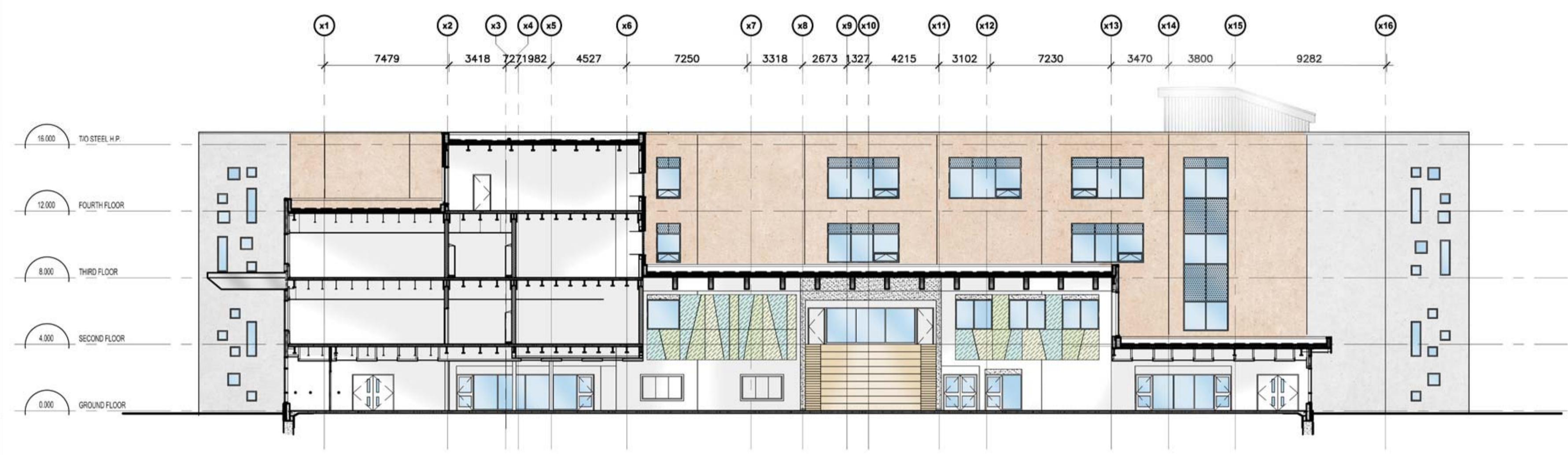
ALL IDEAS, DESIGNS, ARRANGEMENTS, AND PLANS INDICATED OR REPRESENTED BY THIS DRAWING ARE OWNED BY AND THE PROPERTY OF EDWARD J. CUHACI AND ASSOCIATES INC. AND WERE CREATED, EVOLVED, AND DEVELOPED FOR USE ON AND IN CONNECTION WITH THE SPECIFIED PROJECT. NONE OF THE IDEAS, DESIGNS, ARRANGEMENTS OR PLANS SHALL BE USED BY OR DISCLOSED TO ANY PERSON, FIRM, OR CORPORATION FOR ANY PURPOSE WHATSOEVER WITHOUT THE WRITTEN PERMISSION OF EDWARD J. CUHACI AND ASSOCIATES INC.

THE ARCHITECT WAIVES ANY AND ALL RESPONSIBILITY AND LIABILITY FOR PROBLEMS WHICH ARISE FROM FAILURE TO FOLLOW THESE PLANS, SPECIFICATIONS, AND THE DESIGN INTENT THEY CONVEY, OR FOR PROBLEMS WHICH ARISE FROM OTHERS' FAILURE TO OBTAIN AND/OR FOLLOW THE ARCHITECT'S GUIDANCE WITH RESPECT TO ANY ERRORS, OMISSIONS, INCONSISTENCIES, AMBIGUITIES OR CONFLICTS WHICH ARE ALLEGED.

CONTRACTOR TO VERIFY ALL DIMENSIONS AND NOTIFY THE ARCHITECT OF ANY DISCREPANCIES BEFORE WORK COMMENCES. DO NOT SCALE DRAWINGS



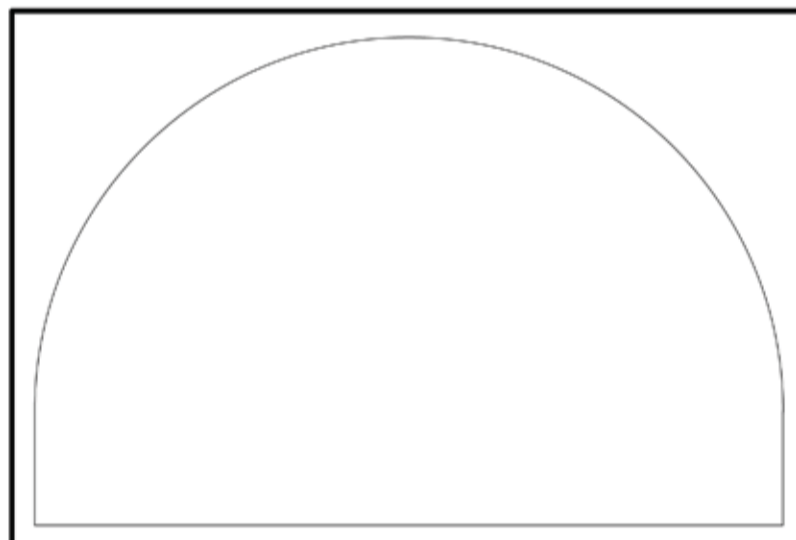
**1 WEST ELEVATION**  
A201SP 1:200



**2 PARTIAL WEST ELEVATION**  
A201SP 1:200

LEGEND	
	TILT-UP TEXTURED CONCRETE PANELS
	TILT-UP LIGHT GRAY CONCRETE PANELS
	TILT-UP LIGHT BLUE CONCRETE PANELS
	TILT-UP LIGHT AQUA CONCRETE PANELS
	TILT-UP LIGHT GREEN CONCRETE PANELS
	TILT-UP LIGHT LIME-GREEN CONCRETE PANELS
	TILT-UP SALMON CONCRETE PANELS
	TILT-UP PANEL WITH BRICK VENEER: COLOUR 1
	TILT-UP PANEL WITH BRICK VENEER: COLOUR 2
	TILT-UP PANEL WITH BRICK VENEER: COLOUR 3
	COMPOSITE ALUMINUM PANEL CANOPIES
	PREFINISHED METAL SIDING - VERTICAL INSTALLATION
	SPANDREL GLAZING WITH INSULATED BACK PAN BEHIND IN ALUMINUM CURTAIN WALL
	VISION INSULATED GLASS UNITS IN ALUMINUM CURTAIN WALL
	OPERABLE WINDOW WITH INSULATED GLASS UNITS

ELEVATION NOTES	
EE-01	19mm CONTROL JOINT BETWEEN TILT-UP PANELS
EE-02	TYPE 1 CURTAIN WALL SYSTEM
EE-03	TYPE 2 CURTAIN WALL SYSTEM
EE-04	PRESSED METAL DOOR AND FRAME
EE-05	CONCRETE FINISH
EE-06	COMPOSITE ALUMINUM PANEL CLAD CANOPY
EE-07	ALUMINUM SWING DOOR
EE-08	PRE-FINISHED METAL CAP FLASHING
EE-09	ALUMINUM GARAGE DOOR
EE-10	FIRE DEPARTMENT CONNECTION
EE-11	HOSE BIB
EE-12	LOUVER REFER TO MECHANICAL
EE-13	19mm WIDE REVEAL IN TILT-UP CONCRETE PANEL
EE-14	13mm LINE OF RECESS FOR BRICK BELOW
EE-15	PRESSED METAL DOOR, FRAME AND GLAZED SCREEN
EE-16	PREFINISHED METAL SIDING
EE-17	COMPOSITE ALUMINUM PANEL JOINT, REFER TO REFLECTED CEILING PLANS FOR JOINT ALIGNMENT
EE-18	POURED CONCRETE ARCHITECTURAL SCREEN WALL, REFER TO SITE DETAILS FOR INFORMATION
EE-19	CHILLER NOISE BARRIER
EE-20	FUTURE SAW DUST COLLECTOR



**EDWARD J CUHACI & ASSOCIATES ARCHITECTS Inc.**  
171 Slater St, Suite 100, Ottawa, Ontario, K1P 5H7  
Fax: (613) 236-1944 Telephone: (613) 236-7135 E-mail: info@cuhaci.com

PROJECT TITLE/TITRE DU PROJET  
**NEW STITTSVILLE HIGH SCHOOL**  
700 COPE DRIVE  
OTTAWA, ONTARIO  
OTTAWA - CARLETON DISTRICT SCHOOL BOARD  
NEPEAN, ON K2H 6L3  
133 GREENBANK ROAD

DRAWING TITLE/TITRE DU DESSIN  
**ELEVATIONS**

SCALE ECHELLE	AS SHOWN	PROJ. No 1909	ISSUE No ---	REV. No ---
DRAWN BY DESSINE PAR	CM/DS	DRAWING/DESSIN		
CHECKED BY VÉRIFIÉ PAR	JJ	<b>A201SP</b>		
DATE	2019	ACAD FILE/FICHER: 1909-A201SP.DWG		

Plot Date: 22/11/2019 Plot Time: 1:47:44 PM Plot By: CASSANDRA SHANES  
 Plotter: DWG TO PDF.PLOT3  
 Page Setup: -----  
 PLOT STAMP FOR EDUC USE ONLY

D07-12-19-0144