



OTTAWA-CARLETON DISTRICT SCHOOL BOARD

1	0	2019/07/31	ISSUED FOR SITE PLAN CONTROL
ISSUE NO.	REV. NO.	DATE	ISSUE

LES IDÉES, CONCEPTS, DISPOSITIONS ET PLANS MONTRÉS OU REPRÉSENTÉS PAR CE DESSIN APPARTIENNENT À EDWARD J. CUHACI AND ASSOCIATES ARCHITECTS INC. ET ONT ÉTÉ CRÉÉS, ET DÉVELOPPÉS POUR ÊTRE UTILISÉS DANS LE CADRE DU PRÉSENT PROJET. ILS NE DOIVENT PAS ÊTRE UTILISÉS À D'AUTRES FINS NI COMMUNIQUÉS À QUI QUE CE SOIT SANS LA PERMISSION ÉCRITE DE EDWARD J. CUHACI AND ASSOCIATES ARCHITECTS INC.

L'ARCHITECTE DÉCLINE TOUTE RESPONSABILITÉ DÉCOULANT DE PROBLÈMES FAISANT SUITE AU NON RESPECT DES PLANS ET DEVIS OU DE L'INTENTION DU CONCEPT QU'ILS TRANSMETTENT, OU DE TOUTS PROBLÈMES POUVANT RÉSULTER DU DÉFAUT DE TIERS D'OBTENIR OU DE SUIVRE LES INSTRUCTIONS DE L'ARCHITECTE RELATIVEMENT AUX ERREURS, OMISSIONS, INCOHÉRENCES, AMBIGUITÉS OU CONTRADICTIONS ALLÉGUÉES.

L'ENTREPRENEUR DOIT VÉRIFIER TOUTES LES DIMENSIONS SUR PLACE ET INFORMER L'ARCHITECTE DE TOUT ÉCART AVANT LE DÉBUT DES TRAVAUX. NE PAS MESURER LES DESSINS À L'ÉCHELLE.

ALL IDEAS, DESIGNS, ARRANGEMENTS, AND PLANS INDICATED OR REPRESENTED BY THIS DRAWING ARE OWNED BY AND THE PROPERTY OF EDWARD J. CUHACI AND ASSOCIATES INC. AND WERE CREATED, EVOLVED, AND DEVELOPED FOR USE ON AND IN CONNECTION WITH THE SPECIFIED PROJECT. NONE OF THE IDEAS, DESIGNS, ARRANGEMENTS OR PLANS SHALL BE USED BY OR DISCLOSED TO ANY PERSON, FIRM, OR CORPORATION FOR ANY PURPOSE WHATSOEVER WITHOUT THE WRITTEN PERMISSION OF EDWARD J. CUHACI AND ASSOCIATES INC.

THE ARCHITECT WAIVES ANY AND ALL RESPONSIBILITY AND LIABILITY FOR PROBLEMS WHICH ARISE FROM FAILURE TO FOLLOW THESE PLANS, SPECIFICATIONS, AND THE DESIGN INTENT THEY CONVEY, OR FOR PROBLEMS WHICH ARISE FROM OTHERS' FAILURE TO OBTAIN AND/OR FOLLOW THE ARCHITECT'S GUIDANCE WITH RESPECT TO ANY ERRORS, OMISSIONS, INCONSISTENCIES, AMBIGUITIES OR CONFLICTS WHICH ARE ALLEGED.

CONTRACTOR TO VERIFY ALL DIMENSIONS AND NOTIFY THE ARCHITECT OF ANY DISCREPANCIES BEFORE WORK COMMENCES. DO NOT SCALE DRAWINGS



EDWARD J CUHACI & ASSOCIATES ARCHITECTS Inc.
 171 Slater St., Suite 100, Ottawa, Ontario, K1P 5H7
 Fax: (613) 236-1944 Telephone: (613) 236-7135 E-mail: info@cuhaci.com

PROJECT/TITRE DU PROJET
NEW STITTSVILLE HIGH SCHOOL

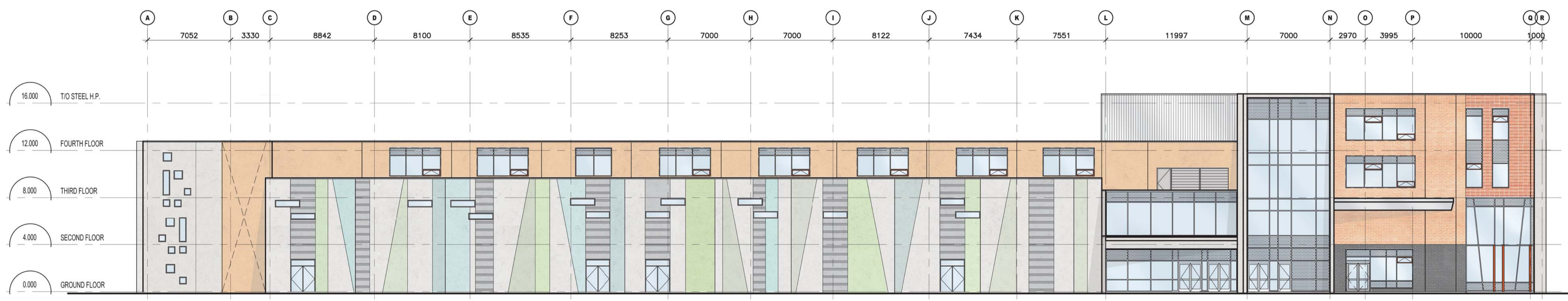
 700 COPE DRIVE
 OTTAWA, ONTARIO
 OTTAWA - CARLETON DISTRICT SCHOOL BOARD
 NEPEAN, ON K2H 6L3
 133 GREENBANK ROAD

DRAWING/TITRE DU DESSIN
ELEVATIONS

SCALE ECHELLE	AS SHOWN	PROJ. No 1909	ISSUE No ---	REV. No ---
DRAWN BY DESSINE PAR	CMDS	DRAWING/DESSIN		
CHECKED BY VÉRIFIÉ PAR	JJ	A200SP		
DATE	2019	ACAD FILE/FICHIER: 1909-A200SP FOR #		



1 NORTH ELEVATION
 A200SP 1:200



2 SOUTH ELEVATION
 A200SP 1:200



3 EAST ELEVATION
 A200SP 1:200

LEGEND

- TILT-UP TEXTURED CONCRETE PANELS
- TILT-UP LIGHT GRAY CONCRETE PANELS
- TILT-UP LIGHT BLUE CONCRETE PANELS
- TILT-UP LIGHT AQUA CONCRETE PANELS
- TILT-UP LIGHT GREEN CONCRETE PANELS
- TILT-UP LIGHT LIME-GREEN CONCRETE PANELS
- TILT-UP SALMON CONCRETE PANELS
- TILT-UP PANEL WITH BRICK VENEER: COLOUR 1
- TILT-UP PANEL WITH BRICK VENEER: COLOUR 2
- TILT-UP PANEL WITH BRICK VENEER: COLOUR 3
- COMPOSITE ALUMINUM PANEL CANOPIES
- PREFINISHED METAL SIDING - VERTICAL INSTALLATION
- SPANDEL GLAZING WITH INSULATED BACK PAN BEHIND IN ALUMINUM CURTAIN WALL
- VISION INSULATED GLASS UNITS IN ALUMINUM CURTAIN WALL
- OPERABLE WINDOW WITH INSULATED GLASS UNITS

Plot Date: 31/07/2019 Plot Time: 11:35:22 AM Plot By: CASSANDRA BMS
 Plotter: DWG TO PDF.PLC
 Page Setup: -----

#####



OTTAWA-CARLETON DISTRICT SCHOOL BOARD

1	0	2019/07/31	ISSUED FOR SITE PLAN CONTROL
ISSUE NO.	REV. NO.	DATE	ISSUE

LES IDÉES, CONCEPTS, DISPOSITIONS ET PLANS MONTRES OU REPRÉSENTÉS PAR CE DESSIN APPARTIENNENT À EDWARD J. CUHACI AND ASSOCIATES ARCHITECTS INC. ET ONT ÉTÉ CRÉÉS, ET DÉVELOPPÉS POUR ÊTRE UTILISÉS DANS LE CADRE DU PRÉSENT PROJET. ILS NE DOIVENT PAS ÊTRE UTILISÉS À D'AUTRES FINS NI COMMUNIQUÉS À QUI QUE CE SOIT SANS LA PERMISSION ÉCRITE DE EDWARD J. CUHACI AND ASSOCIATES ARCHITECTS INC.

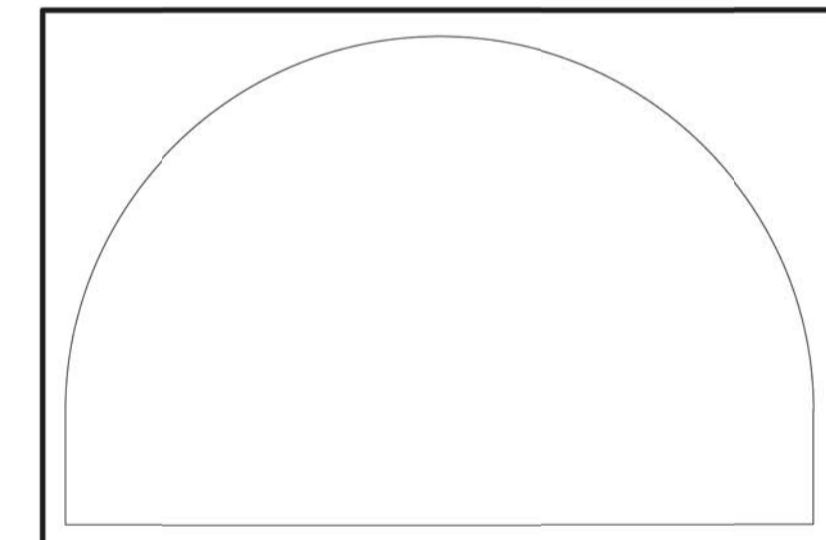
L'ARCHITECTE DÉCLINE TOUTE RESPONSABILITÉ DÉCOULANT DE PROBLÈMES FAISANT SUITE AU NON RESPECT DES PLANS ET DEVIS OU DE L'INTENTION DU CONCEPT QU'ILS TRANSMETTENT, OU DE TOUTS PROBLÈMES POUVANT RÉSULTER DU DÉFAUT DE TIERS D'OBTENIR OU DE SUIVRE LES INSTRUCTIONS DE L'ARCHITECTE RELATIVEMENT AUX ERREURS, OMISSIONS, INCOHÉRENCES, AMBIGUITÉS OU CONTRADICTIONS ALLEGUÉS.

L'ENTREPRENEUR DOIT VÉRIFIER TOUTES LES DIMENSIONS SUR PLACE ET INFORMER L'ARCHITECTE DE TOUT ÉCART AVANT LE DÉBUT DES TRAVAUX. NE PAS MESURER LES DESSINS À L'ÉCHELLE.

ALL IDEAS, DESIGNS, ARRANGEMENTS, AND PLANS INDICATED OR REPRESENTED BY THIS DRAWING ARE OWNED BY AND THE PROPERTY OF EDWARD J. CUHACI AND ASSOCIATES INC. AND WERE CREATED, EVOLVED, AND DEVELOPED FOR USE ON AND IN CONNECTION WITH THE SPECIFIED PROJECT. NONE OF THE IDEAS, DESIGNS, ARRANGEMENTS OR PLANS SHALL BE USED BY OR DISCLOSED TO ANY PERSON, FIRM, OR CORPORATION FOR ANY PURPOSE WHATSOEVER WITHOUT THE WRITTEN PERMISSION OF EDWARD J. CUHACI AND ASSOCIATES INC.

THE ARCHITECT WAIVES ANY AND ALL RESPONSIBILITY AND LIABILITY FOR PROBLEMS WHICH ARISE FROM FAILURE TO FOLLOW THESE PLANS, SPECIFICATIONS, AND THE DESIGN INTENT THEY CONVEY, OR FOR PROBLEMS WHICH ARISE FROM OTHERS' FAILURE TO OBTAIN AND/OR FOLLOW THE ARCHITECT'S GUIDANCE WITH RESPECT TO ANY ERRORS, OMISSIONS, INCONSISTENCIES, AMBIGUITIES OR CONFLICTS WHICH ARE ALLEGED.

CONTRACTOR TO VERIFY ALL DIMENSIONS AND NOTIFY THE ARCHITECT OF ANY DISCREPANCIES BEFORE WORK COMMENCES. DO NOT SCALE DRAWINGS



EDWARD J CUHACI & ASSOCIATES ARCHITECTS Inc.
 171 Slater St, Suite 100, Ottawa, Ontario, K1P 5H7
 Fax: (613) 236-1944 Telephone: (613) 236-7135 E-mail: info@cuhaci.com

PROJECT TITLE/TITRE DU PROJET
NEW STITTSVILLE HIGH SCHOOL

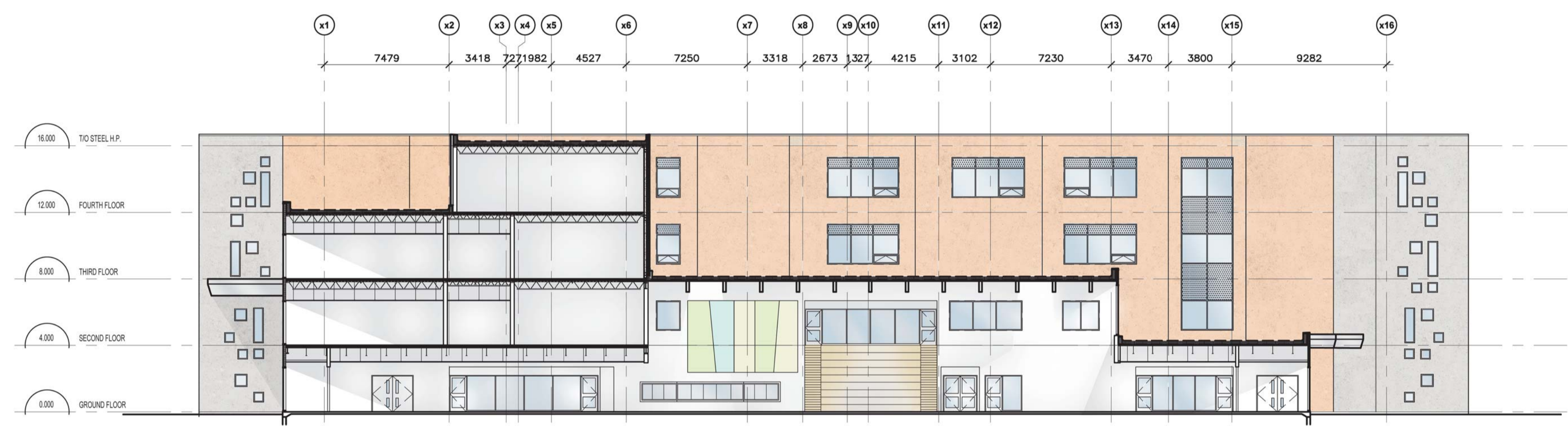
 700 COPE DRIVE
 OTTAWA, ONTARIO
 OTTAWA - CARLETON DISTRICT SCHOOL BOARD
 NEPEAN, ON K2H 6L3
 133 GREENBANK ROAD

DRAWING TITLE/TITRE DU DESSIN
ELEVATIONS

SCALE	AS SHOWN	PROJ. No	1909	ISSUE No	---	REV. No	---
ECHELLE	---						
DRAWN BY	CM/DS	DRAWING/DESSIN					
CHECKED BY	JJ	A201SP					
DATE	2019						
ACAD FILE/FICHER: 1909-A201SP FOR R							



1 WEST ELEVATION
 A201SP 1:200



2 PARTIAL WEST ELEVATION
 A201SP 1:200

LEGEND	
	TILT-UP TEXTURED CONCRETE PANELS
	TILT-UP LIGHT GRAY CONCRETE PANELS
	TILT-UP LIGHT BLUE CONCRETE PANELS
	TILT-UP LIGHT AQUA CONCRETE PANELS
	TILT-UP LIGHT GREEN CONCRETE PANELS
	TILT-UP LIGHT LIME-GREEN CONCRETE PANELS
	TILT-UP SALMON CONCRETE PANELS
	TILT-UP PANEL WITH BRICK VENEER: COLOUR 1
	TILT-UP PANEL WITH BRICK VENEER: COLOUR 2
	TILT-UP PANEL WITH BRICK VENEER: COLOUR 3
	COMPOSITE ALUMINUM PANEL CANOPIES
	PREFINISHED METAL SIDING - VERTICAL INSTALLATION
	SPANDREL GLAZING WITH INSULATED BACK PAN BEHIND IN ALUMINUM CURTAIN WALL
	VISION INSULATED GLASS UNITS IN ALUMINUM CURTAIN WALL
	OPERABLE WINDOW WITH INSULATED GLASS UNITS

Plot Date: 31/07/2019 Plot Time: 11:34:47 AM Plot By: CASANDRA SINIS PLOT STAMP FOR EIC USE ONLY
 Plotter: DWG TO PDF.PC3 Page Setup: -----

 #####
 #####
 #####
 #####