



OTTAWA-CARLETON DISTRICT SCHOOL BOARD

2	0	2019/10/09	ISSUED FOR SITE PLAN CONTROL COMMENTS
1	0	2019/07/31	ISSUED FOR SITE PLAN CONTROL
ISSUE NO.	REV. NO.	DATE	ISSUE

LES IDÉES, CONCEPTS, DISPOSITIONS ET PLANS MONTRÉS OU REPRÉSENTÉS PAR CE DESSIN APPARTIENNENT À EDWARD J. CUHACI AND ASSOCIATES ARCHITECTS INC. ET ONT ÉTÉ CRÉÉS, ET DÉVELOPPÉS POUR ÊTRE UTILISÉS DANS LE CADRE DU PRÉSENT PROJET. ILS NE DOIVENT PAS ÊTRE UTILISÉS À D'AUTRES FINS NI COMMUNIQUÉS À QUI QUE CE SOIT SANS LA PERMISSION ÉCRITE DE EDWARD J. CUHACI AND ASSOCIATES ARCHITECTS INC.

L'ARCHITECTE DÉCLINE TOUTE RESPONSABILITÉ DÉCOULANT DE PROBLÈMES FAISANT SUITE AU NON RESPECT DES PLANS ET DEVIS OU DE L'INTENTION DU CONCEPT QU'ILS TRANSMETTENT, OU DE TOUTS PROBLÈMES POUVANT RÉSULTER DU DÉFAUT DE TIERS D'OBTENIR OU DE SUIVRE LES INSTRUCTIONS DE L'ARCHITECTE RELATIVEMENT AUX ERREURS, OMISSIONS, INCOHÉRENCES, AMBIGUITÉS OU CONTRADICTIONS ALLEGUÉS.

L'ENTREPRENEUR DOIT VÉRIFIER TOUTES LES DIMENSIONS SUR PLACE ET INFORMER L'ARCHITECTE DE TOUT ÉCART AVANT LE DÉBUT DES TRAVAUX. NE PAS MESURER LES DESSINS À L'ÉCHELLE.

ALL IDEAS, DESIGNS, ARRANGEMENTS, AND PLANS INDICATED OR REPRESENTED BY THIS DRAWING ARE OWNED BY AND THE PROPERTY OF EDWARD J. CUHACI AND ASSOCIATES INC. AND WERE CREATED, EVOLVED, AND DEVELOPED FOR USE ON AND IN CONNECTION WITH THE SPECIFIED PROJECT. NONE OF THE IDEAS, DESIGNS, ARRANGEMENTS OR PLANS SHALL BE USED BY OR DISCLOSED TO ANY PERSON, FIRM, OR CORPORATION FOR ANY PURPOSE WHATSOEVER WITHOUT THE WRITTEN PERMISSION OF EDWARD J. CUHACI AND ASSOCIATES INC.

THE ARCHITECT WAIVES ANY AND ALL RESPONSIBILITY AND LIABILITY FOR PROBLEMS WHICH ARISE FROM FAILURE TO FOLLOW THESE PLANS, SPECIFICATIONS, AND THE DESIGN INTENT THEY CONVEY, OR FOR PROBLEMS WHICH ARISE FROM OTHERS' FAILURE TO OBTAIN AND/OR FOLLOW THE ARCHITECT'S GUIDANCE WITH RESPECT TO ANY ERRORS, OMISSIONS, INCONSISTENCIES, AMBIGUITIES OR CONFLICTS WHICH ARE ALLEGED.

CONTRACTOR TO VERIFY ALL DIMENSIONS AND NOTIFY THE ARCHITECT OF ANY DISCREPANCIES BEFORE WORK COMMENCES. DO NOT SCALE DRAWINGS

APPROVED REFUSED

THIS 28 DAY OF August, 2020

Erin O'Connell
ERIN O'CONNELL, MCIP, RPP, MANAGER (A)
 DEVELOPMENT REVIEW, WEST
 PLANNING, INFRASTRUCTURE AND ECONOMIC
 DEVELOPMENT DEPARTMENT, CITY OF OTTAWA

EDWARD J CUHACI & ASSOCIATES ARCHITECTS Inc.
 171 Slater St., Suite 100, Ottawa, Ontario, K1P 5H7
 Fax: (613) 236-1944 Telephone: (613) 236-7135 E-mail: info@cuhaci.ca

PROJECT TITLE/TITRE DU PROJET
NEW STITTSVILLE HIGH SCHOOL
 700 COPE DRIVE
 OTTAWA, ONTARIO
 OTTAWA - CARLETON DISTRICT SCHOOL BOARD
 NEPEAN, ON K2H 6L3
 133 GREENBANK ROAD

DRAWING TITLE/TITRE DU DESSIN
ELEVATIONS

SCALE ECHELLE	AS SHOWN	PROJ. No 1909	ISSUE No ---	REV. No ---
DRAWN BY DESSINE PAR	CM/MS	DRAWING/DESSIN		
CHECKED BY VÉRIFIÉ PAR	JJ	A200SP		
DATE	2019	ACAD FILE/FICHER: 1909-A200SP.DWG		

D07-12-19-0144

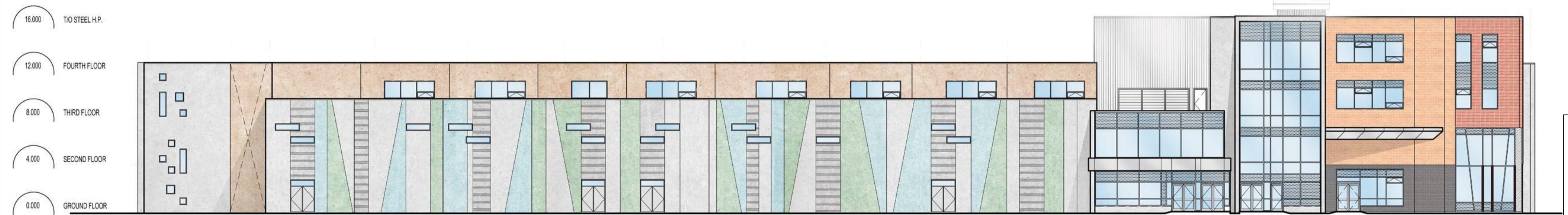
#18011

U T S R Q P N M L K J H G F E D C B A
 1000 10000 3956 3009 7000 9290 7551 7275 8122 7000 7000 8253 8535 8100 8842 3330 7052



1 NORTH ELEVATION
 A200SP 1:200

A B C D E F G H J K L M N P Q R S T U
 7052 3330 8842 8100 8535 8253 7000 7000 8122 7434 7551 11997 7000 2970 3995 10000 1000



2 SOUTH ELEVATION
 A200SP 1:200

110 115 114 113 112 111 110 109 108 107 106 105 104 103 102 101
 9282 3820 3450 7250 3083 4215 3327 2693 3298 7250 4527 1982 277 3398 7498



3 EAST ELEVATION
 A200SP 1:200

LEGEND	ELEVATION NOTES
TILT-UP TEXTURED CONCRETE PANELS	EE-01 19mm CONTROL JOINT BETWEEN TILT-UP PANELS
TILT-UP LIGHT GRAY CONCRETE PANELS	EE-02 TYPE 1 CURTAIN WALL SYSTEM
TILT-UP LIGHT BLUE CONCRETE PANELS	EE-03 TYPE 2 CURTAIN WALL SYSTEM
TILT-UP LIGHT AQUA CONCRETE PANELS	EE-04 PRESSED METAL DOOR AND FRAME
TILT-UP LIGHT GREEN CONCRETE PANELS	EE-05 CONCRETE FINISH
TILT-UP LIGHT LIME-GREEN CONCRETE PANELS	EE-06 COMPOSITE ALUMINUM PANEL CLAD CANOPY
TILT-UP SALMON CONCRETE PANELS	EE-07 ALUMINUM SWING DOOR
TILT-UP PANEL WITH BRICK VENEER: COLOUR 1	EE-08 PRE-FINISHED METAL CAP FLASHING
TILT-UP PANEL WITH BRICK VENEER: COLOUR 2	EE-09 ALUMINUM GARAGE DOOR
TILT-UP PANEL WITH BRICK VENEER: COLOUR 3	EE-10 FIRE DEPARTMENT CONNECTION
COMPOSITE ALUMINUM PANEL CANOPIES	EE-11 HOSE BIB
PREFINISHED METAL SIDING - VERTICAL INSTALLATION	EE-12 LOUVER REFER TO MECHANICAL
SPANDEL GLAZING WITH INSULATED BACK PAN BEHIND IN ALUMINUM CURTAIN WALL	EE-13 19mm WIDE REVEAL IN TILT-UP CONCRETE PANEL
VISION INSULATED GLASS UNITS IN ALUMINUM CURTAIN WALL	EE-14 13mm LINE OF RECESS FOR BRICK BELOW
OPERABLE WINDOW WITH INSULATED GLASS UNITS	EE-15 PRESSED METAL DOOR, FRAME AND GLAZED SCREEN
	EE-16 PREFINISHED METAL SIDING
	EE-17 COMPOSITE ALUMINUM PANEL JOINT. REFER TO REFLECTED CEILING PLANS FOR JOINT ALIGNMENT
	EE-18 POURED CONCRETE ARCHITECTURAL SCREEN WALL. REFER TO SITE DETAILS FOR INFORMATION
	EE-19 CHILLER NOISE BARRIER
	EE-20 FUTURE SAW DUST COLLECTOR

Plot Date: 26/11/2019 Plot Time: 9:55:02 AM Plot By: CASSANDRA BANG Plot Stamp For EAC USE ONLY



OTTAWA-CARLETON DISTRICT SCHOOL BOARD

ISSUE NO.	REV. NO.	DATE	ISSUE
2	0	2019/12/09	ISSUED FOR SITE PLAN CONTROL COMMENTS
1	0	2019/07/31	ISSUED FOR SITE PLAN CONTROL

LES IDÉES, CONCEPTS, DISPOSITIONS ET PLANS MONTRÉS OU REPRÉSENTÉS PAR CE DESSIN APPARTIENNENT À EDWARD J. CUHACI AND ASSOCIATES ARCHITECTS INC. ET ONT ÉTÉ CRÉÉS, ET DÉVELOPPÉS POUR ÊTRE UTILISÉS DANS LE CADRE DU PRÉSENT PROJET. ILS NE DOIVENT PAS ÊTRE UTILISÉS À D'AUTRES FINS NI COMMUNIQUÉS À QUI QUE CE SOIT SANS LA PERMISSION ÉCRITE DE EDWARD J. CUHACI AND ASSOCIATES ARCHITECTS INC.

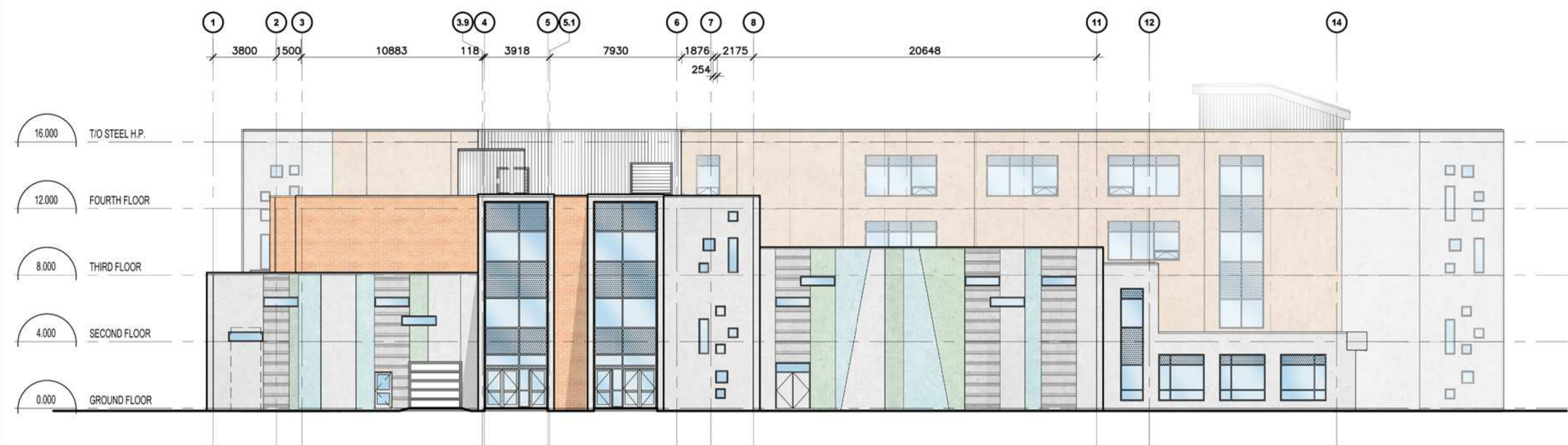
L'ARCHITECTE DÉCLINE TOUTE RESPONSABILITÉ DÉCOULANT DE PROBLÈMES FAISANT SUITE AU NON RESPECT DES PLANS ET DEVIS OU DE L'INTENTION DU CONCEPT QU'ILS TRANSMETTENT, OU DE TOUTS PROBLÈMES POUVANT RÉSULTER DU DÉFAUT DE TIERS D'OBTENIR OU DE SUIVRE LES INSTRUCTIONS DE L'ARCHITECTE RELATIVEMENT AUX ERREURS, OMISSIONS, INCOHÉRENCES, AMBIGUITÉS OU CONTRADICTIONS ALLÉGUÉES.

L'ENTREPRENEUR DOIT VÉRIFIER TOUTES LES DIMENSIONS SUR PLACE ET INFORMER L'ARCHITECTE DE TOUT ÉCART AVANT LE DÉBUT DES TRAVAUX. NE PAS MESURER LES DESSINS À L'ÉCHELLE.

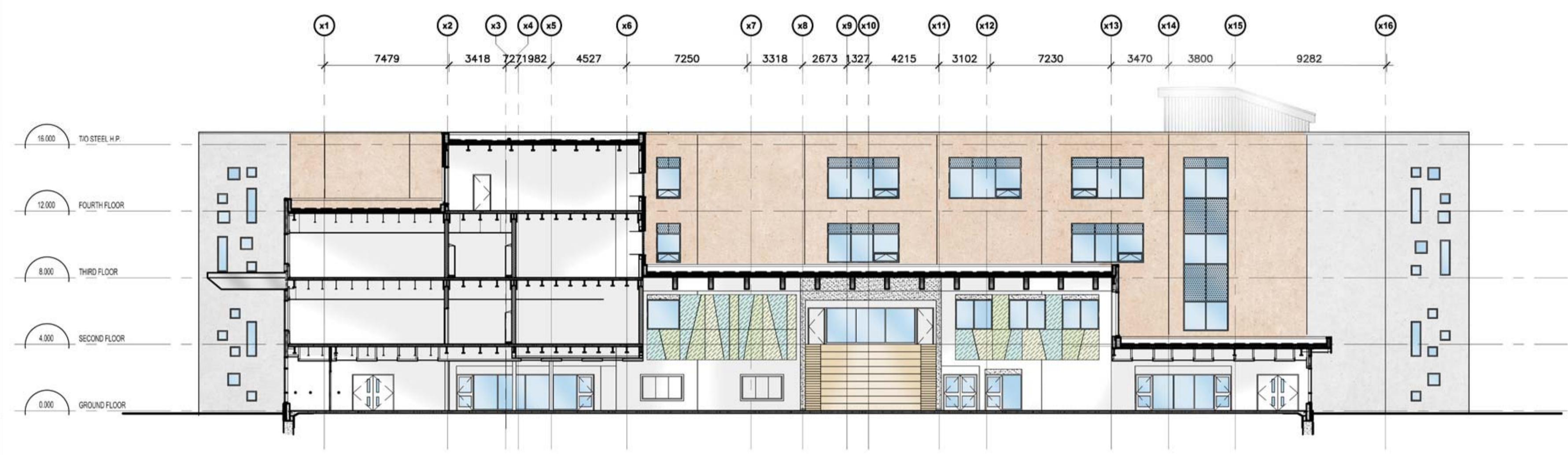
ALL IDEAS, DESIGNS, ARRANGEMENTS, AND PLANS INDICATED OR REPRESENTED BY THIS DRAWING ARE OWNED BY AND THE PROPERTY OF EDWARD J. CUHACI AND ASSOCIATES INC. AND WERE CREATED, EVOLVED, AND DEVELOPED FOR USE ON AND IN CONNECTION WITH THE SPECIFIED PROJECT. NONE OF THE IDEAS, DESIGNS, ARRANGEMENTS OR PLANS SHALL BE USED BY OR DISCLOSED TO ANY PERSON, FIRM, OR CORPORATION FOR ANY PURPOSE WHATSOEVER WITHOUT THE WRITTEN PERMISSION OF EDWARD J. CUHACI AND ASSOCIATES INC.

THE ARCHITECT WAIVES ANY AND ALL RESPONSIBILITY AND LIABILITY FOR PROBLEMS WHICH ARISE FROM FAILURE TO FOLLOW THESE PLANS, SPECIFICATIONS, AND THE DESIGN INTENT THEY CONVEY, OR FOR PROBLEMS WHICH ARISE FROM OTHERS' FAILURE TO OBTAIN AND/OR FOLLOW THE ARCHITECT'S GUIDANCE WITH RESPECT TO ANY ERRORS, OMISSIONS, INCONSISTENCIES, AMBIGUITIES OR CONFLICTS WHICH ARE ALLEGED.

CONTRACTOR TO VERIFY ALL DIMENSIONS AND NOTIFY THE ARCHITECT OF ANY DISCREPANCIES BEFORE WORK COMMENCES. DO NOT SCALE DRAWINGS



1 WEST ELEVATION
A201SP 1:200



2 PARTIAL WEST ELEVATION
A201SP 1:200

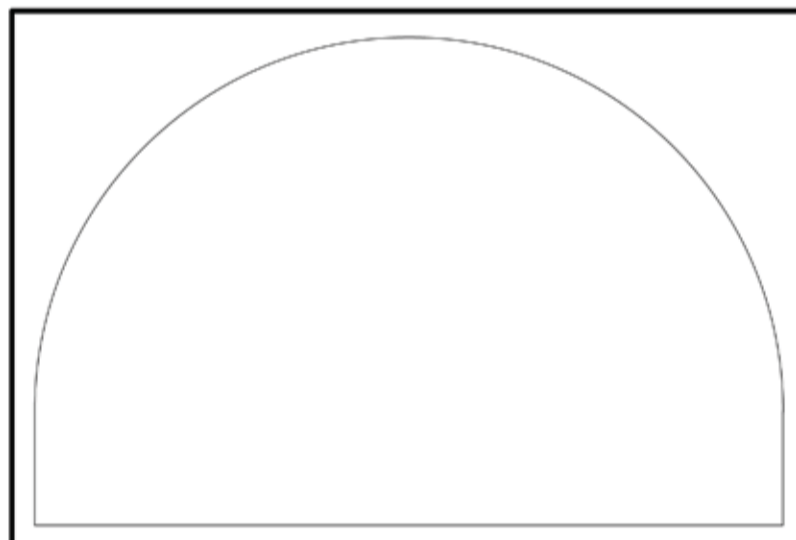
APPROVED REFUSED

THIS 28 DAY OF August, 2020

Erin O'Connell

ERIN O'CONNELL, MCIP, RPP, MANAGER (A)
DEVELOPMENT REVIEW, WEST
PLANNING, INFRASTRUCTURE AND ECONOMIC
DEVELOPMENT DEPARTMENT, CITY OF OTTAWA

LEGEND	ELEVATION NOTES
TILT-UP TEXTURED CONCRETE PANELS	EE-01 19mm CONTROL JOINT BETWEEN TILT-UP PANELS
TILT-UP LIGHT GRAY CONCRETE PANELS	EE-02 TYPE 1 CURTAIN WALL SYSTEM
TILT-UP LIGHT BLUE CONCRETE PANELS	EE-03 TYPE 2 CURTAIN WALL SYSTEM
TILT-UP LIGHT AQUA CONCRETE PANELS	EE-04 PRESSED METAL DOOR AND FRAME
TILT-UP LIGHT GREEN CONCRETE PANELS	EE-05 CONCRETE FINISH
TILT-UP LIGHT LIME-GREEN CONCRETE PANELS	EE-06 COMPOSITE ALUMINUM PANEL CLAD CANOPY
TILT-UP LIGHT LIME-GREEN CONCRETE PANELS	EE-07 ALUMINUM SWING DOOR
TILT-UP SALMON CONCRETE PANELS	EE-08 PRE-FINISHED METAL CAP FLASHING
TILT-UP PANEL WITH BRICK VENEER: COLOUR 1	EE-09 ALUMINUM GARAGE DOOR
TILT-UP PANEL WITH BRICK VENEER: COLOUR 2	EE-10 FIRE DEPARTMENT CONNECTION
TILT-UP PANEL WITH BRICK VENEER: COLOUR 3	EE-11 HOSE BIB
COMPOSITE ALUMINUM PANEL CANOPIES	EE-12 LOUVER REFER TO MECHANICAL
PREFINISHED METAL SIDING - VERTICAL INSTALLATION	EE-13 19mm WIDE REVEAL IN TILT-UP CONCRETE PANEL
SPANDREL GLAZING WITH INSULATED BACK PAN BEHIND IN ALUMINUM CURTAIN WALL	EE-14 13mm LINE OF RECESS FOR BRICK BELOW
VISION INSULATED GLASS UNITS IN ALUMINUM CURTAIN WALL	EE-15 PRESSED METAL DOOR, FRAME AND GLAZED SCREEN
OPERABLE WINDOW WITH INSULATED GLASS UNITS	EE-16 PREFINISHED METAL SIDING
	EE-17 COMPOSITE ALUMINUM PANEL JOINT, REFER TO REFLECTED CEILING PLANS FOR JOINT ALIGNMENT
	EE-18 POURED CONCRETE ARCHITECTURAL SCREEN WALL, REFER TO SITE DETAILS FOR INFORMATION
	EE-19 CHILLER NOISE BARRIER
	EE-20 FUTURE SAW DUST COLLECTOR



EDWARD J CUHACI & ASSOCIATES ARCHITECTS Inc.
171 Slater St, Suite 100, Ottawa, Ontario, K1P 5H7
Fax: (613) 236-1944 Telephone: (613) 236-7135 E-mail: info@cuhaci.com

PROJECT TITRE/TITRE DU PROJET
NEW STITTSVILLE HIGH SCHOOL
700 COPE DRIVE
OTTAWA, ONTARIO

OTTAWA - CARLETON DISTRICT SCHOOL BOARD
NEPEAN, ON K2H 6L3
133 GREENBANK ROAD

DRAWING TITRE/TITRE DU DESSIN
ELEVATIONS

SCALE	PROJ. No.	ISSUE No.	REV. No.
ECHELLE AS SHOWN	1909	---	---
DRAWN BY DESSINE PAR	CM/DS	DRAWING/DESSIN	
CHECKED BY VÉRIFIÉ PAR	JJ	A201SP	
DATE	2019	ACAD FILE/FICHER: 1909-A201SP.DWG	

Plot Date: 22/11/2019 Plot Time: 1:47:44 PM Plot By: CASANDRA SHES
 Plotter: DWG TO PDF.PLC3 Page Setup: -----

D07-12-19-0144