

EXISTING VEGETATION PLAN
SCALE: 1:1000

WILD BIRD CENTRE

PLANT ID #	SIZE DBH / ht. (cm)	COMMON NAME	BOTANICAL NAME	DISTINCTIVE TREE	COMMENTS	ACTION	RATIONALE
McArton Road r.o.w.							
1	25-40	Bur Oak	Quercus macrocarpus	No	grouping of Bur Oak in good condition	Retain	
2	25-40	Eastern White Cedar	Thuja occidentalis	No	Grouping of cedars in fair condition - tops cut off	Retain	
3	25-40	Eastern White Cedar	Thuja occidentalis	No	Grouping of cedars in fair condition - tops cut off	Remove	Within access road and regrading
4	4x40-50	American Linden	Tilia americana	Yes	Good condition with good canopy cover, minor rot at based	Retain / mitigate	Mitigate any grade changes for access roadway
5	20	Bur Oak	Quercus macrocarpus	No	Good Condition	Retain	
6	25-30	Bur Oak	Quercus macrocarpus	No	grouping of Bur Oak in good condition, understorey of buckthorn and hawthorn, poison ivy	Retain / mitigate	Proposed swale location to be adjusted on field with location of Bur Oak
7	20	American Elm	Ulmus americana	No	Good condition with good canopy cover	Retain	
8	25	Sugar Maple	Acer saccharum	No	Good Condition with understorey of cedar, pine, poison ivy	Retain	

EXISTING VEGETATION

HEDGEROW - MCARTON ROAD

HEDGEROW CONSISTS OF A MIX OF DECIDUOUS AND CONIFEROUS TREES, SOLID ALONG THE SOUTHWEST HALF; OPENINGS ALONG THE NORTHEAST HALF. TREES CONSISTS OF BUR OAK, LINDEN, ELM, CEDAR, WITH SAPLINGS OF HAWTHORN AND BUCKTHORN. POISON IVY IN GROUND COVER. TREES SIZE: RANGE FROM SAPLINGS TO 50CM DBH (MULTISTEM LINDEN). 25-40CM DBH BUR OAK AND CEDAR ALONG THE SOUTHEAST HALF. CONDITION: MAJORITY ARE IN GOOD CONDITION WITH GOOD CANOPY. SOME OF THE CEDARS HAVE DAMAGED TOPS.

HEDGEROW - NORTHWEST PROPERTY LINE

HEDGEROW ALONG NORTHERN PORTION OF PROPERTY LINE - STRADDLING PROPERTY LINE. TREES CONSISTS OF SUGAR MAPLE, SCOTS PINE, WITH AN UNDERSTOREY OF YOUNG CEDAR AND PINE, DIERVELLA, POISON IVY, SOME BUCKTHORN. TREES SIZE: MATURE SCOTS PINE AND SEMI MATURE SUGAR MAPLE RANGE FROM 25-40CM DBH. CONDITION: MAJORITY ARE IN GOOD CONDITION WITH GOOD CANOPY.

PARTIAL HEDGEROW - MID FIELD

PARTIAL HEDGEROW ALONG LOW FARMER'S STONE WALL. TREES CONSISTS OF CEDAR, HAWTHORN, ELM. TREES SIZE: RANGE FROM SAPLINGS TO 20CM DBH. CONDITION: MAJORITY ARE IN FAIR TO GOOD CONDITION WITH GOOD CANOPY.

LOW WET AREA A

THIS AREA IS ADJACENT OT THE SIGNIFICANT WETLANDS (OFF PROPERTY) AND CONSISTS OF WETLANDS GRASSES (SEDGES, RUSHES), SHRUBS (ALDER, WILLOW) AND SMALL TREES (TAMARACK, ELM, ASH, POPLAR, SOME SPRUCE ALONG EDGES). THIS AREA REMAINS WET. TREES SIZE: RANGE FROM SAPLINGS TO 20CM DBH. CONDITION: MAJORITY ARE IN FAIR TO GOOD CONDITION. ELM AND ASH ARE DEAD OR IN POOR CONDITION. TAMARACK AND SPRUCE IN GOOD CONDITION.

LOW WET AREA B

THIS AREA CONSISTS OF MAINLY OF POPLAR, WITH SOME ELM, AND ASH WITH AN UNDERGROWTH OF SEDGE GRASSES. TREES SIZE: RANGE FROM SAPLINGS TO 15CM DBH. CONDITION: MAJORITY ARE IN FAIR TO GOOD CONDITION. ELM AND ASH ARE DEAD OR IN POOR CONDITION.

WOODED AREA

THIS AREA IS ADJACENT OT THE SIGNIFICANT WETLANDS (OFF PROPERTY) AND CONSISTS OF A RANGE OF DECIDUOUS (BIRCH, POPLAR, ELM, ASH) AND CONIFEROUS TREES (CEDAR, SPRUCE) WITH AN UDERGROWTH OF SPARSE FERNS, SASPARILLA, POISON IVY. EDGE GROWTH CONSISTS OF DECIDUOUS SHRUBS AND SAPLINGS (DIERVALLA, HAWTHORN, BUCKTHORN, POPLAR, SPRUCE, SERVICEBERRY). TREES SIZE: RANGE FROM SAPLINGS TO 40CM DBH. CONDITION: MAJORITY ARE IN FAIR TO GOOD CONDITION. ELM AND ASH ARE IN POOR CONDITION.

NORTHERN MEADOW

CONSISTS OF A GOOD RANGE OF MEADOW GRASSES AND WILD FLOWERS SUCH AS TIMOTHY, ALFALFA, MILKWEED, RUDBECKIA, DAISY, ST JOHN'S WORT, BUTTERCUP, ASTER. SEDGE GRASSES MORE PREVALENT FURTHER SOUTH.

SOUTHERN MEADOW

MEADOW GRASSES CONSISTS OF SAME SPECIES AS NORTHERN HALF, BUT WITH SEDGE GRASSES AS THE PREVALENT SPECIES. A FEW NATURALIZING SPECIES SUCH AS SPREADING JUNIPER, POPLAR, HAWTHORN. ONE SINGLE ELM (20CM DBH) AT CENTRAL STONE PILE IN GOOD CONDITION.

NOTE:

AREA WAS RESEEDD AFTER PLOUGHING WITH PASTURE MIX AND SEED / ROOT STOCK FROM PREVIOUS MEADOW SPECIES ARE STARTING TO RE-EMERGE.

LEGEND:

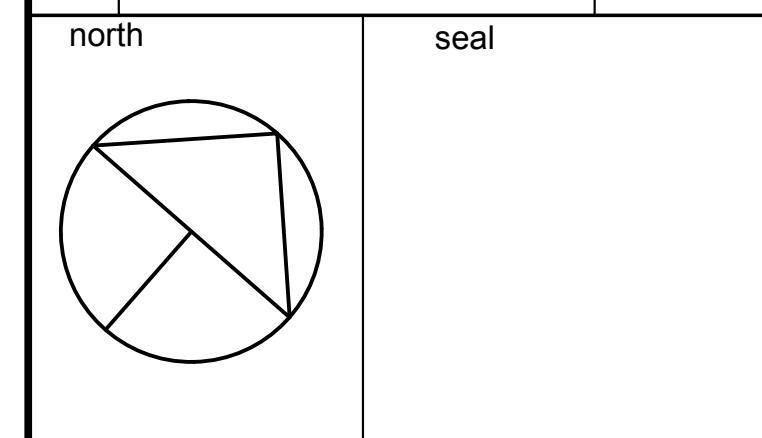
- EXISTING VEGETATION TO REMAIN
- EXISTING VEGETATION TO BE REMOVED
- TREE PROTECTION FENCE
- DEVELOPMENT AREA

Sean Harrigan
SEAN HARRIGAN
PLANNER
PLANNING, REAL ESTATE & ECONOMIC DEVELOPMENT
DEPARTMENT, CITY OF OTTAWA

APPROVED
By Sean Harrigan at 1:52 pm, Mar 26, 2024

THIS PLAN IS ISSUED FOR SITE PLAN CONTROL ONLY. ADDITIONAL DETAILING AND SPECIFICATIONS ARE REQUIRED PRIOR TO TENDERING AND CONSTRUCTION.

5	SPC Resubmission	Nov. 11/21
4	SPC Resubmission	Dec. 16/20
3	for us	Nov. 12/20
2	Requested SPC revisions	Sep. 20/19
1	Issued for SPC	Aug. 08/19
no.	issue / revision	date



Ruhland & Associates Ltd
200-1750 Courtwood Crescent, Ottawa, Ontario K2C 2B5
P (613) 224-4744 x222 F (613) 224-1131 info@ralta.ca www.ralta.ca

project
WILD BIRD CARE CENTER
8520 McArton Road,
Ottawa, ON.

drawing title
TREE CONSERVATION PLAN

scale 1:200	drawn by M. Malkov	designed by R. Ruhland
date October, 2016	checked by R. Ruhland	plot date Nov. 11/21

project number
18 - 1556

drawing number
L - 01

Contractor to check and verify all dimensions on the job

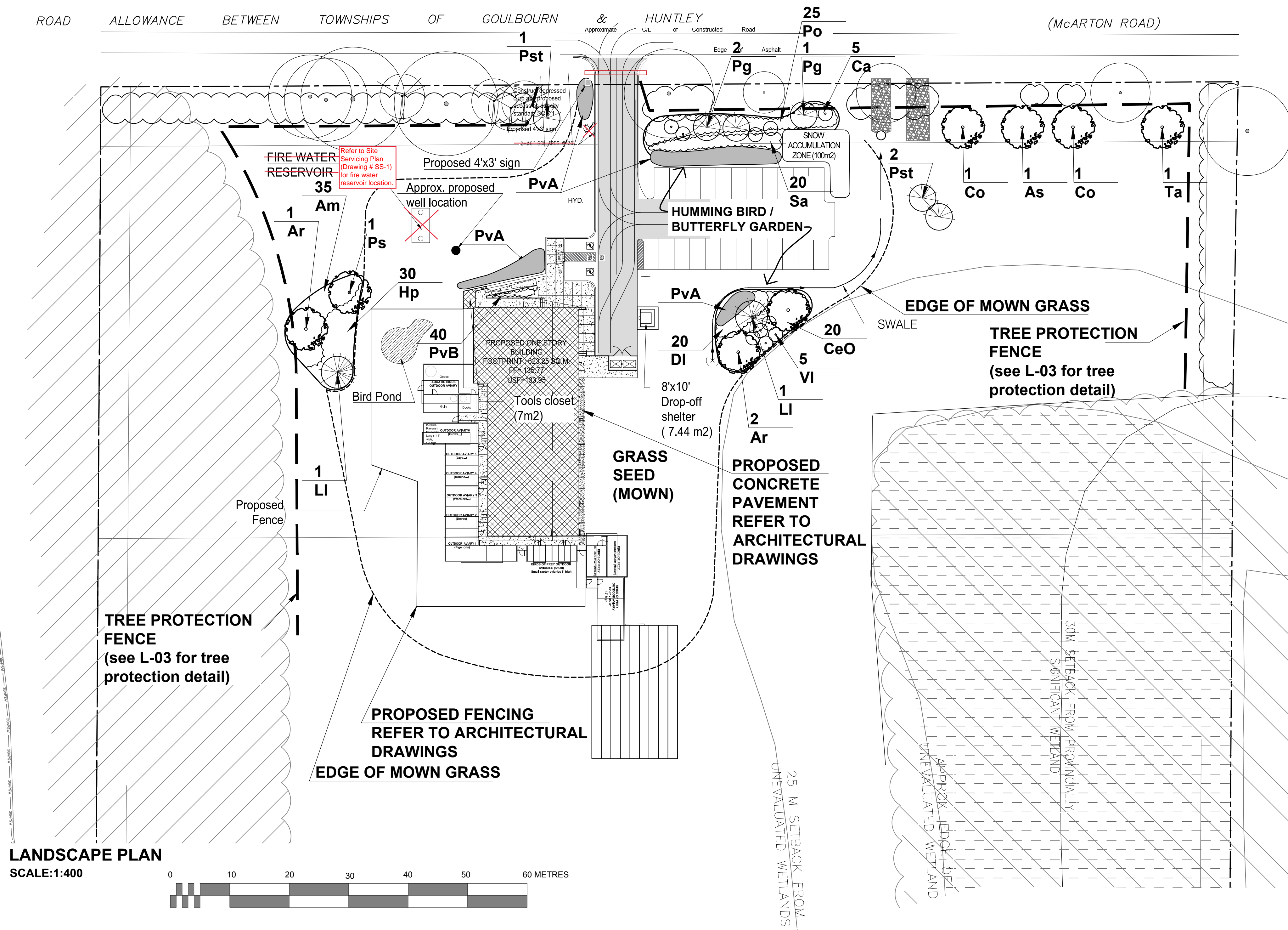
THIS PLAN IS ISSUED FOR SITE PLAN CONTROL ONLY. ADDITIONAL DETAILING AND SPECIFICATIONS ARE REQUIRED PRIOR TO TENDERING AND CONSTRUCTION.

GENERAL NOTES

- All general site information and conditions compiled from existing plans, surveys and consultant's field notes. Report all discrepancies prior to any work. No responsibility is born by the Consultant for unknown subsurface conditions.
- The location of the utilities is approximate only, and the exact location should be determined by consulting the municipal authorities and utility companies concerned. The Contractor shall prove the location of utilities and shall be responsible for adequate protection from damage.
- All dimensions shown are to be verified on site prior to any construction. No deviations are to be made from the layouts as shown on this plan without prior consultation with the Landscape Architect and Owner.
- No other trees to be removed without prior approval by Landscape Architect.

LEGEND:

- EXISTING VEGETATION TO REMAIN
- PROPOSED PLANTING
- TREE PROTECTION FENCE



LANDSCAPE PLAN
SCALE:1:400

ID	Qty	Botanical Name	Common Name	Scheduled Size	Remarks
Trees					
As	1	Acer saccharum	Sugar Maple	60mm cal.	WB, Staked
Ar	3	Acer rubrum	Red Maple	60mm cal.	WB, Staked
Co	2	Celtis occidentalis	Chicagoland Hackberry	60mm cal.	WB, Staked
LI	2	Larix laricina	Canadian Tamarack	175cm ht.	WB, Staked
Pg	3	Picea glauca	White Spruce	175cm ht.	WB, Staked
Ps	1	Prunus serotina	Black Cherry	50mm cal.	WB, Staked
Pst	3	Pinus strobus	White Pine	175cm ht.	WB, Staked
Ta	1	Tilia americana	American Basswood	60mm cal.	WB, Staked
Shrub Bed					
Am	35	Aronia melanocarpa	Chokeberry (Back)		Potted, 1.5m o.c.
Ca	5	Cornus alternifolia	Alternate-Leaf Dogwood		
CeO	20	Cephalanthus occidentalis	Buttonbush (Back)		Potted, 1.5m o.c.
DI	20	Diervilla lonicera	Bush Honey Suckle (Front)		Potted, 1.0m o.c.
Hp	30	Hypericum prolificum	Shrubby St. John's wort (Front)		Potted, 0.90m o.c.
Po	25	Physocarpus opulifolius	Ninebark (Front)		Potted, 1.5m o.c.
Sa	20	Symphoricarpos albus	Snowberry (Back)		Potted, 1.0m o.c.
VI	5	Viburnum lentago	Nannyberry		
PERENNIALS					
PvA	135m ²	Hummingbird / Butterfly perennials *	Native Wild flower seed mix		
PvB	40	Flowering perennials / Ornamental / grasses **	Native varieties	150mm pot	

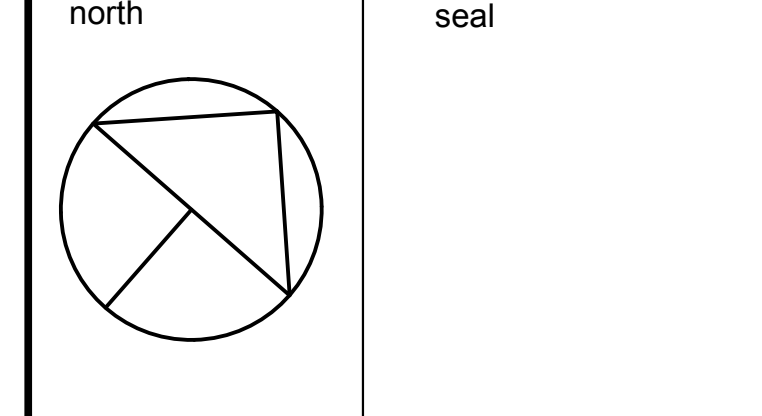
* Hummingbird / Butterfly friendly natives or naturalized seed mix to include species such as: Cardinal flower, trumpet honeysuckle, bee balm, native sage, daisy, rudbeckia, milkweed, joeypy weed.

** Flowering perennials / Ornamental grasses to include species such as: Helianthus, Rudbeckia, Aster, Asclepias, Hypericum, Monarda, Nepeta, Bouteloua, Panicum, Sorghastrum.

Sean Harrigan
SEAN HARRIGAN
PLANNER
PLANNING, REAL ESTATE & ECONOMIC DEVELOPMENT
DEPARTMENT, CITY OF OTTAWA

APPROVED
By Sean Harrigan at 1:52 pm, Mar 26, 2024

no.	issue / revision	date
5	SPC Resubmission	Nov. 11/21
4	SPC Resubmission	Dec. 16/20
3	for us	Nov. 12/20
2	Requested SPC revisions	Sep. 20/19
1	Issued for SPC	Aug. 08/19



Ruhland & Associates Ltd
200-1750 Courtwood Crescent, Ottawa, Ontario K2C 2B5
P (613) 224-4744 x 222 F (613) 224-1131 info@rala.ca www.rala.ca

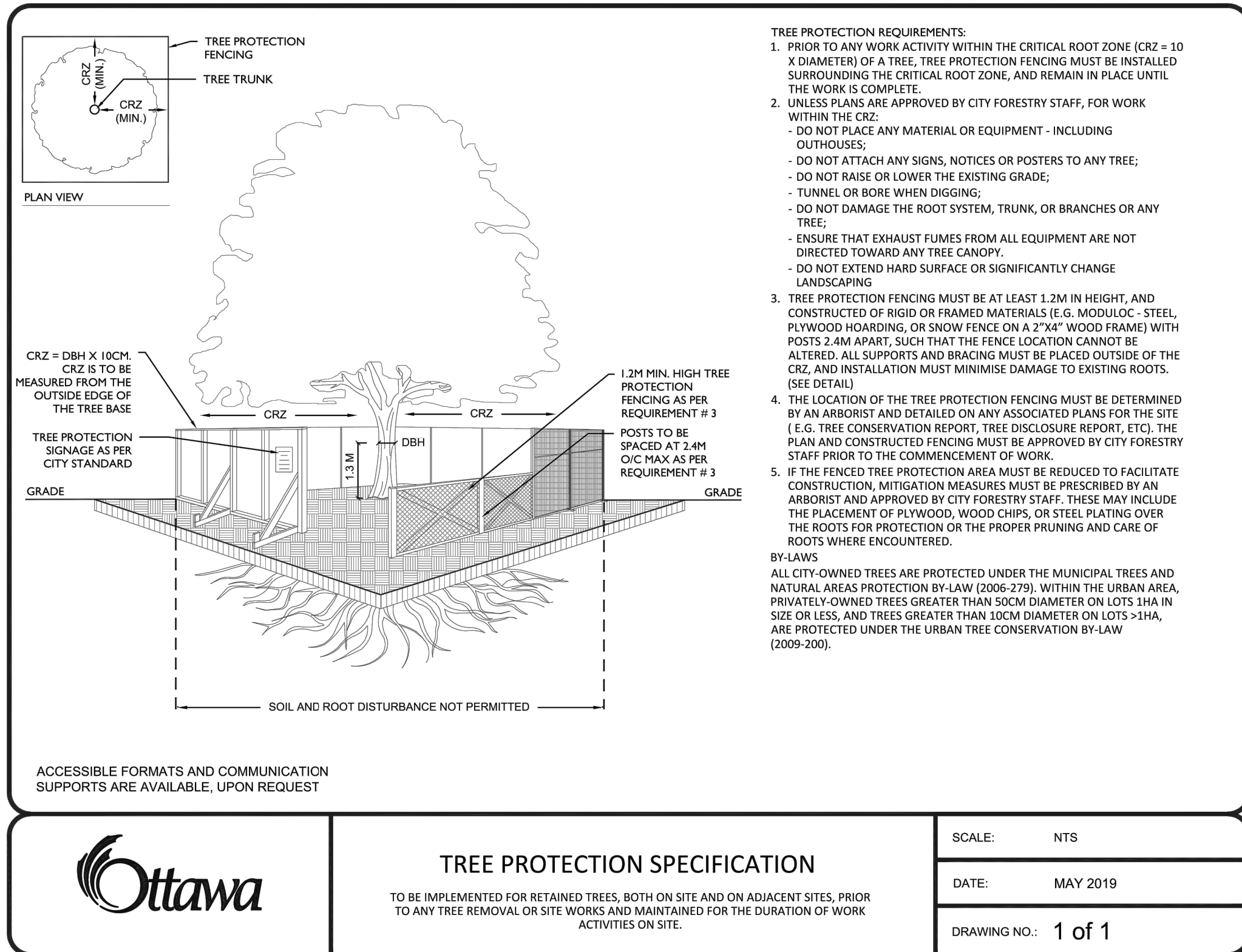
project
WILD BIRD CARE CENTER
8520 McArton Road,
Ottawa, ON.

drawing title
LANDSCAPE PLAN

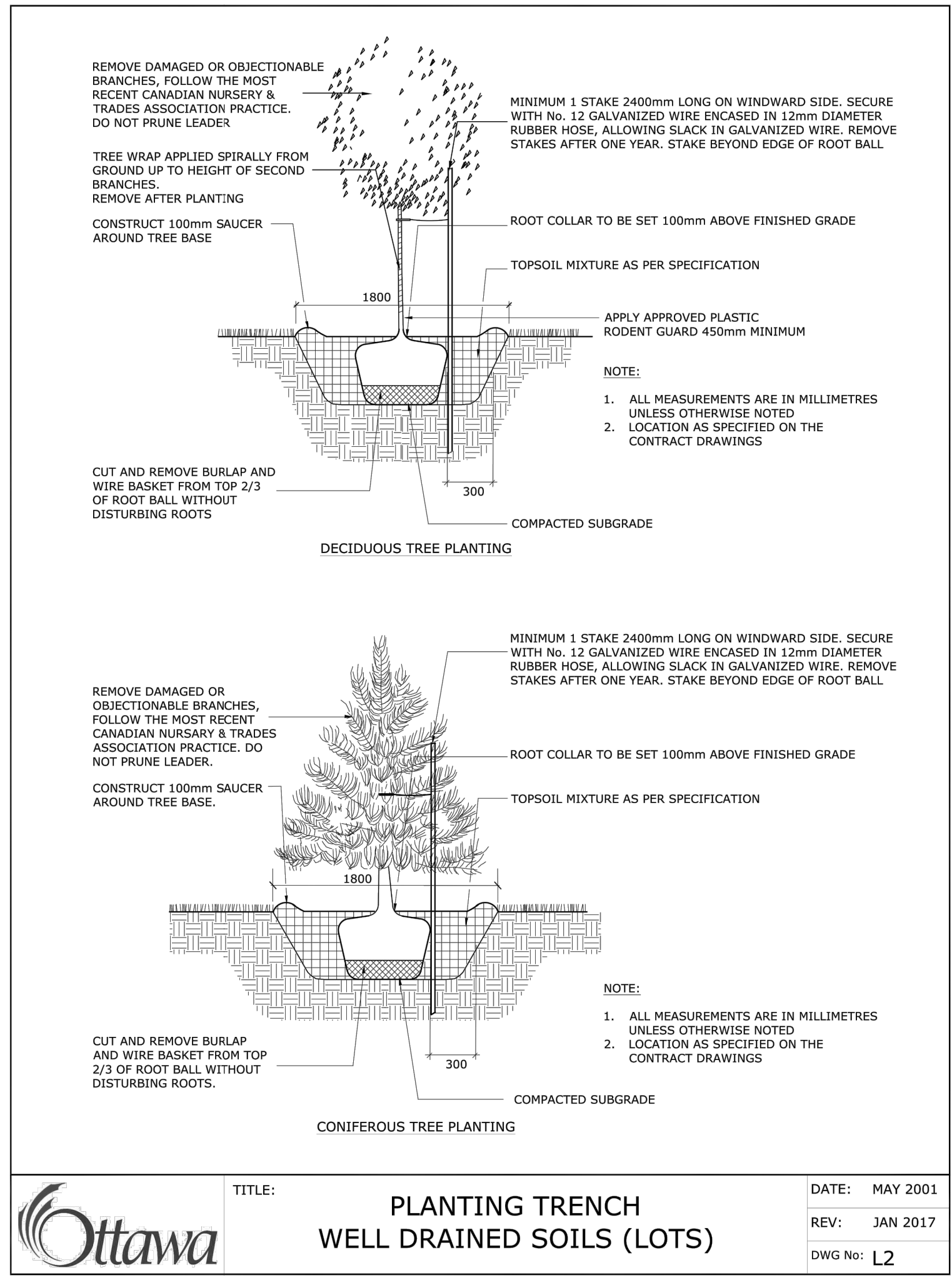
scale	drawn by	designed by
1:400	M. Malkov	R. Ruhland
date	checked by	plot date
October, 2016	R. Ruhland	Nov. 11/21

project number	drawing number
18 - 1556	L - 02

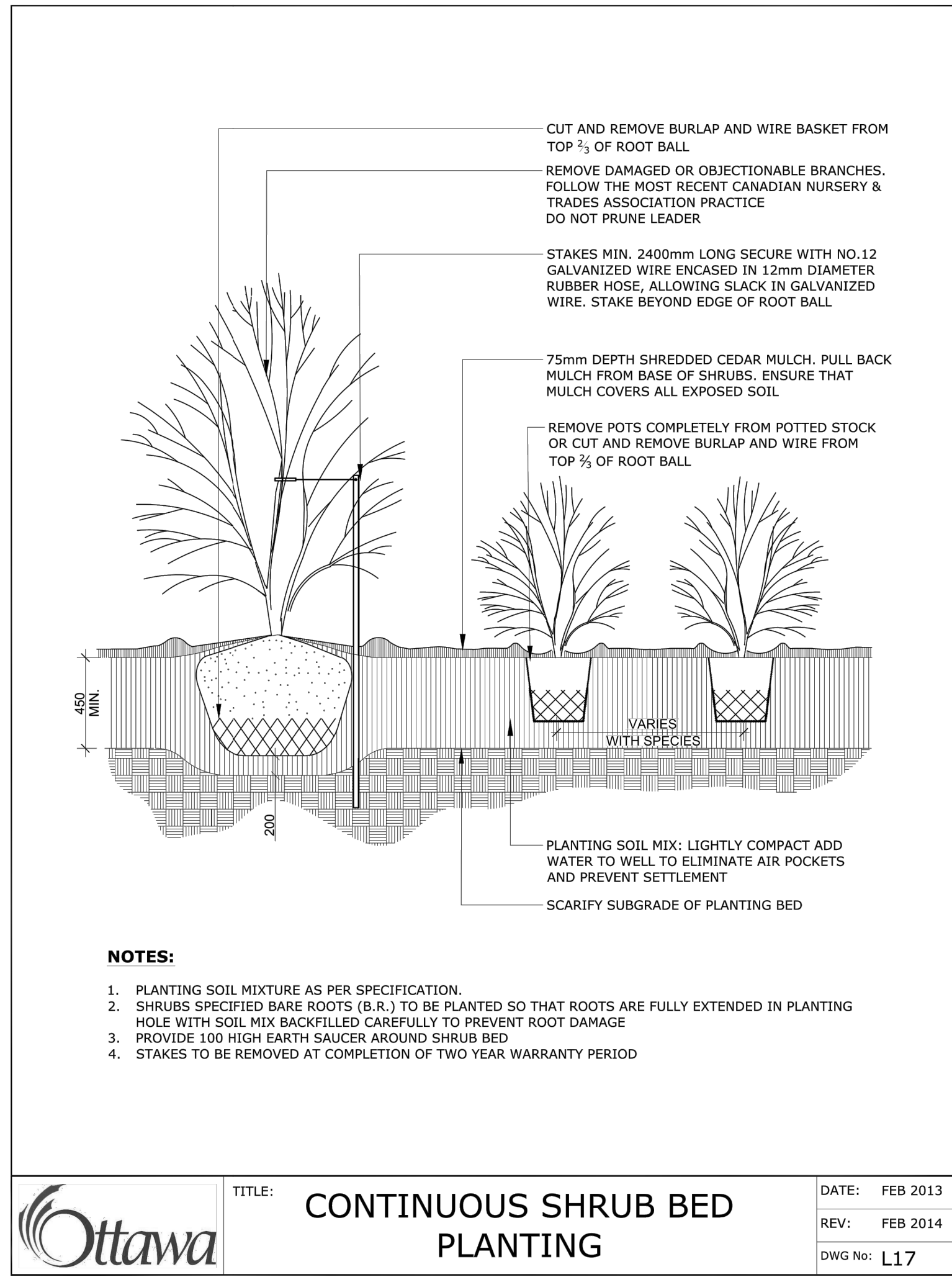
Contractor to check and verify all dimensions on the job



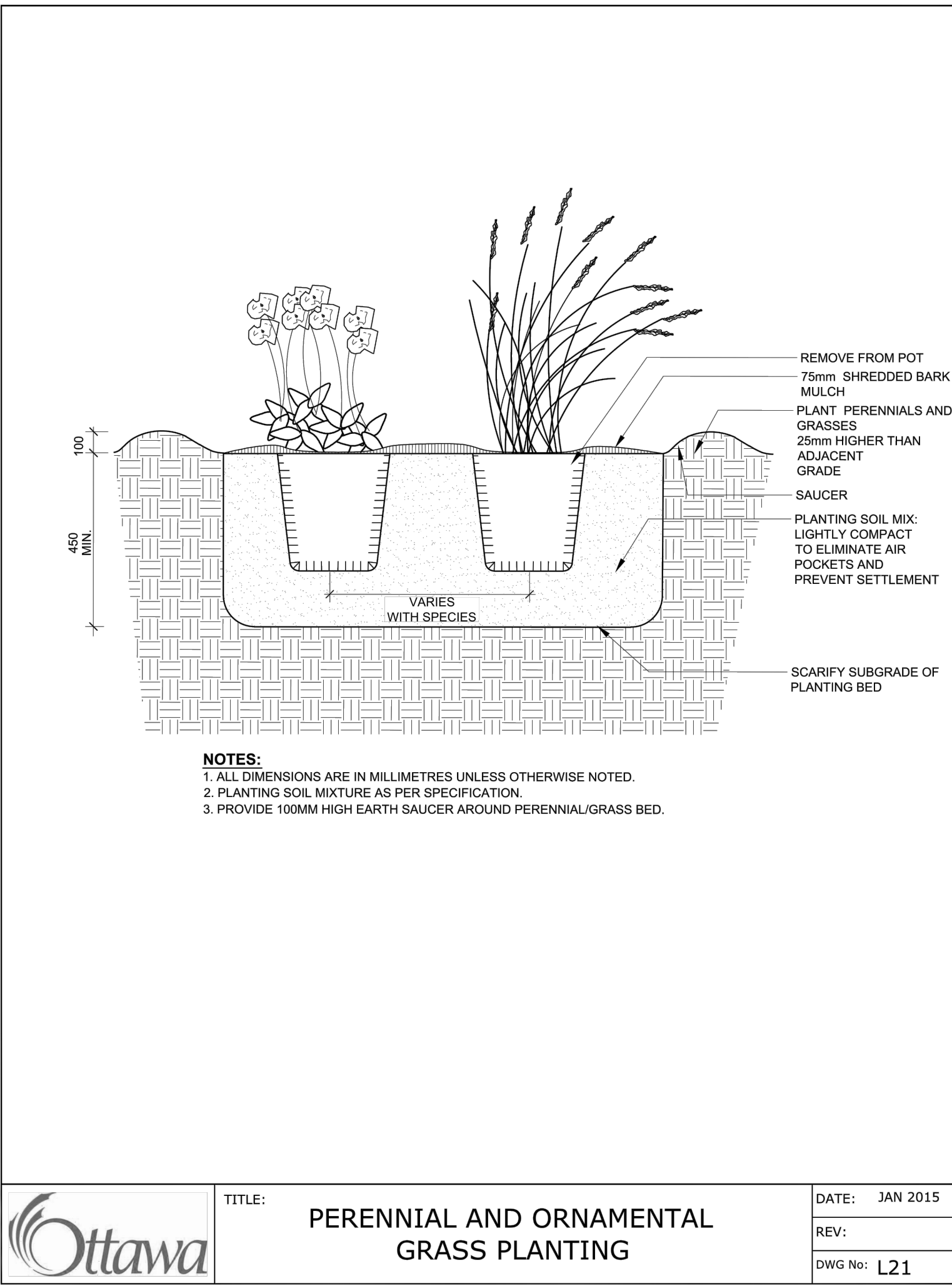
	TREE PROTECTION SPECIFICATION	SCALE: NTS
	TO BE IMPLEMENTED FOR RETAINED TREES, BOTH ON SITE AND ON ADJACENT SITES, PRIOR TO ANY TREE REMOVAL OR SITE WORK, AND MAINTAINED FOR THE DURATION OF WORK ACTIVITIES ON SITE.	DATE: MAY 2019
		DRAWING NO.: 1 of 1



	PLANTING TRENCH WELL DRAINED SOILS (LOTS)	DATE: MAY 2001
		REV: JAN 2017
		DWG No: L2



	CONTINUOUS SHRUB BED PLANTING	DATE: FEB 2013
		REV: FEB 2014
		DWG No: L17

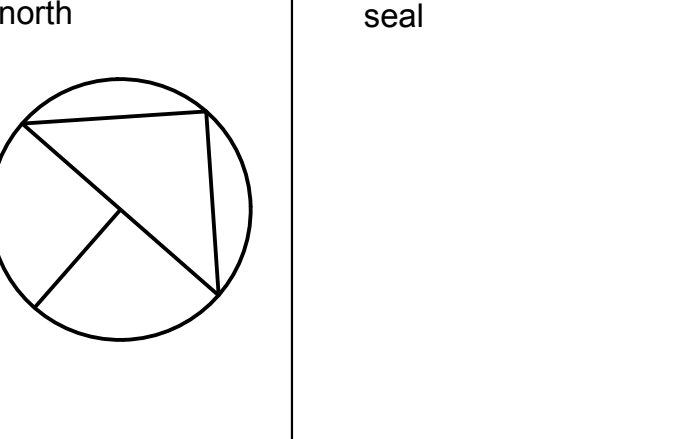


	PERENNIAL AND ORNAMENTAL GRASS PLANTING	DATE: JAN 2015
		REV:
		DWG No: L21

THIS PLAN IS ISSUED FOR SITE PLAN CONTROL ONLY. ADDITIONAL DETAILING AND SPECIFICATIONS ARE REQUIRED PRIOR TO TENDERING AND CONSTRUCTION.

- GENERAL NOTES**
- All general site information and conditions compiled from existing plans, surveys and consultant's field notes. Report all discrepancies prior to any work. No responsibility is born by the Consultant for unknown subsurface conditions.
 - The location of the utilities is approximate only, and the exact location should be determined by consulting the municipal authorities and utility companies concerned. The Contractor shall prove the location of utilities and shall be responsible for adequate protection from damage.
 - All dimensions shown are to be verified on site prior to any construction. No deviations are to be made from the layouts as shown on this plan without prior consultation with the Landscape Architect and Owner.
 - No other trees to be removed without prior approval by Landscape Architect.

5	SPC Resubmission	Nov. 11/21
4	SPC Resubmission	Dec. 16/20
3	for us	Nov. 12/20
2	Requested SPC revisions	Sep. 20/19
1	Issued for SPC	Aug. 08/19
no.	issue / revision	date



Sean Harrigan

SEAN HARRIGAN
PLANNER
PLANNING, REAL ESTATE & ECONOMIC DEVELOPMENT
DEPARTMENT, CITY OF OTTAWA

APPROVED
By Sean Harrigan at 1:53 pm, Mar 26, 2024

Ruhland & Associates Ltd
200-1750 Courtwood Crescent, Ottawa, Ontario K2C 2B5
P (613) 224-4744 x222 F (613) 224-1131 info@rala.ca www.rala.ca

project
WILD BIRD CARE CENTER
8520 McArton Road,
Ottawa, ON.

drawing title LANDSCAPE DETAILS		
scale 1:400	drawn by M. Malkov	designed by R. Ruhland
date October, 2016	checked by R. Ruhland	plot date Nov. 11/21
project number 18 - 1556	drawing number L - 03	

Contractor to check and verify all dimensions on the job