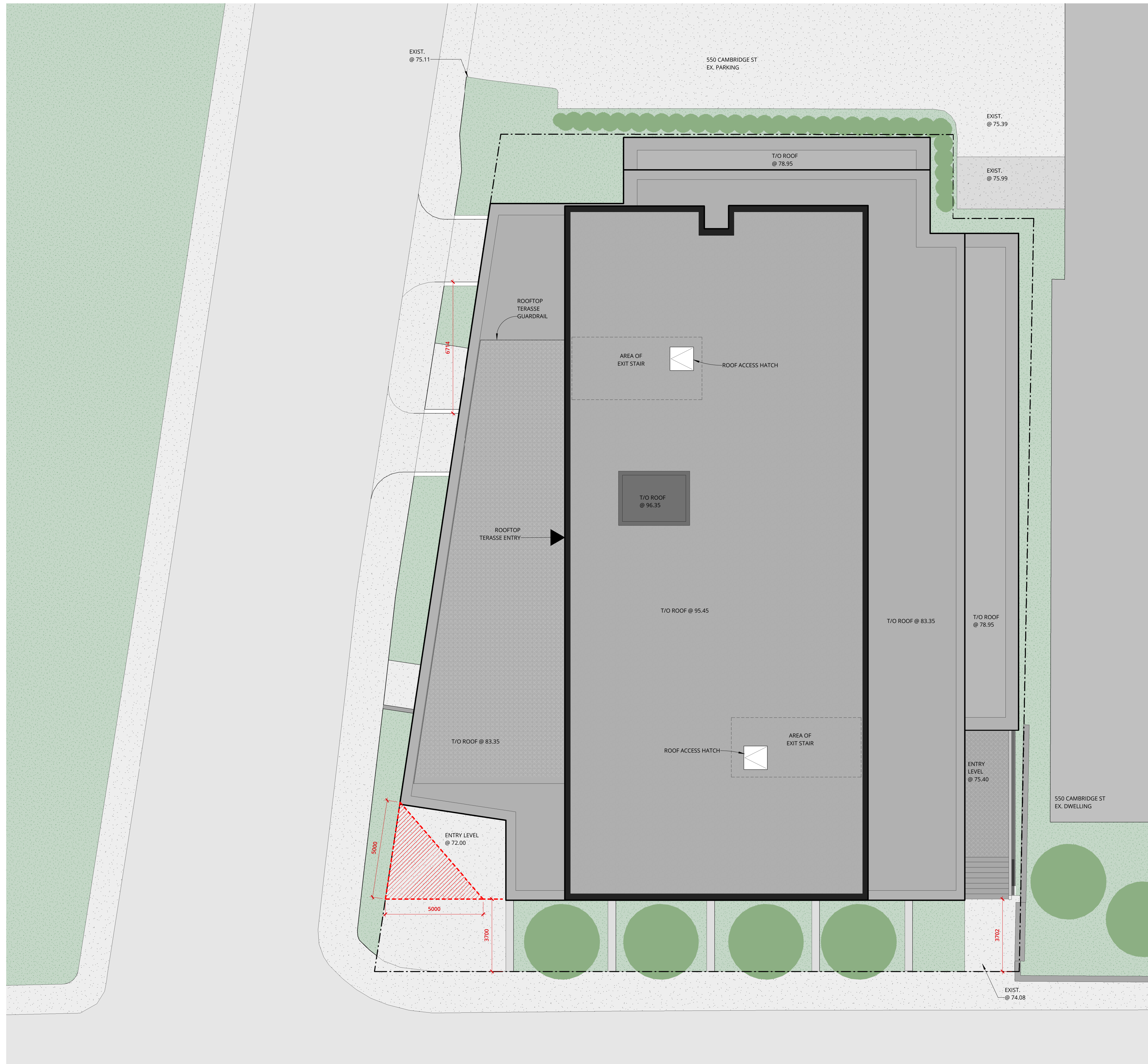


plot scale 1:1



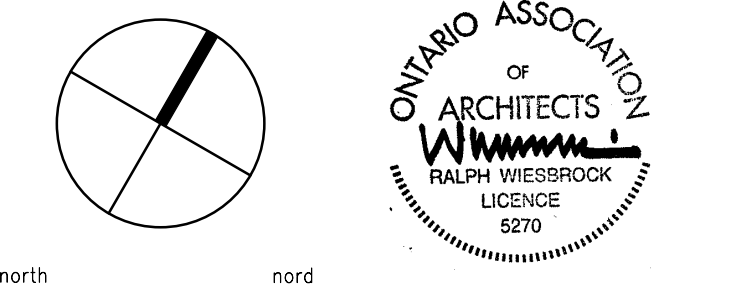
1 ROOF PLAN
A107 SCALE 1:100

SHEET SIZE: ARCH D (24"x36")

NOTES:

Contractor shall check and verify all dimensions on site and report any discrepancies to the Architect before proceeding.

0	ISSUE FOR SITE PLAN APPROVAL	31 OCT 2019
no.	revision	date



383 Parkdale Avenue, Suite 201
Ottawa Ontario Canada K1Y 4R4

KWC ARCHITECTS INC.

PHONE (613) 238-2117
FAX (613) 238-6595
E MAIL kwc@kwc-arch.com

detail no.	1	detail no.
sheet no.	A1	feuille no.

project
projet

JHS - 289 CARLING AVENUE

**JOHN HOWARD SOCIETY
289 CARLING AVE, OTTAWA**

designed by conçu par	KWC	approved by approuvé par	RZ
drawn by dessiné par	SK	project no. no. du projet	1850
date	2019-MAY-09	scale	as noted
drawing / dessin			

ROOF PLAN

FILE No. D07-12-19-0147
PLAN No. #18008

revision
révision

sheet no.
no. de la feuille

A107