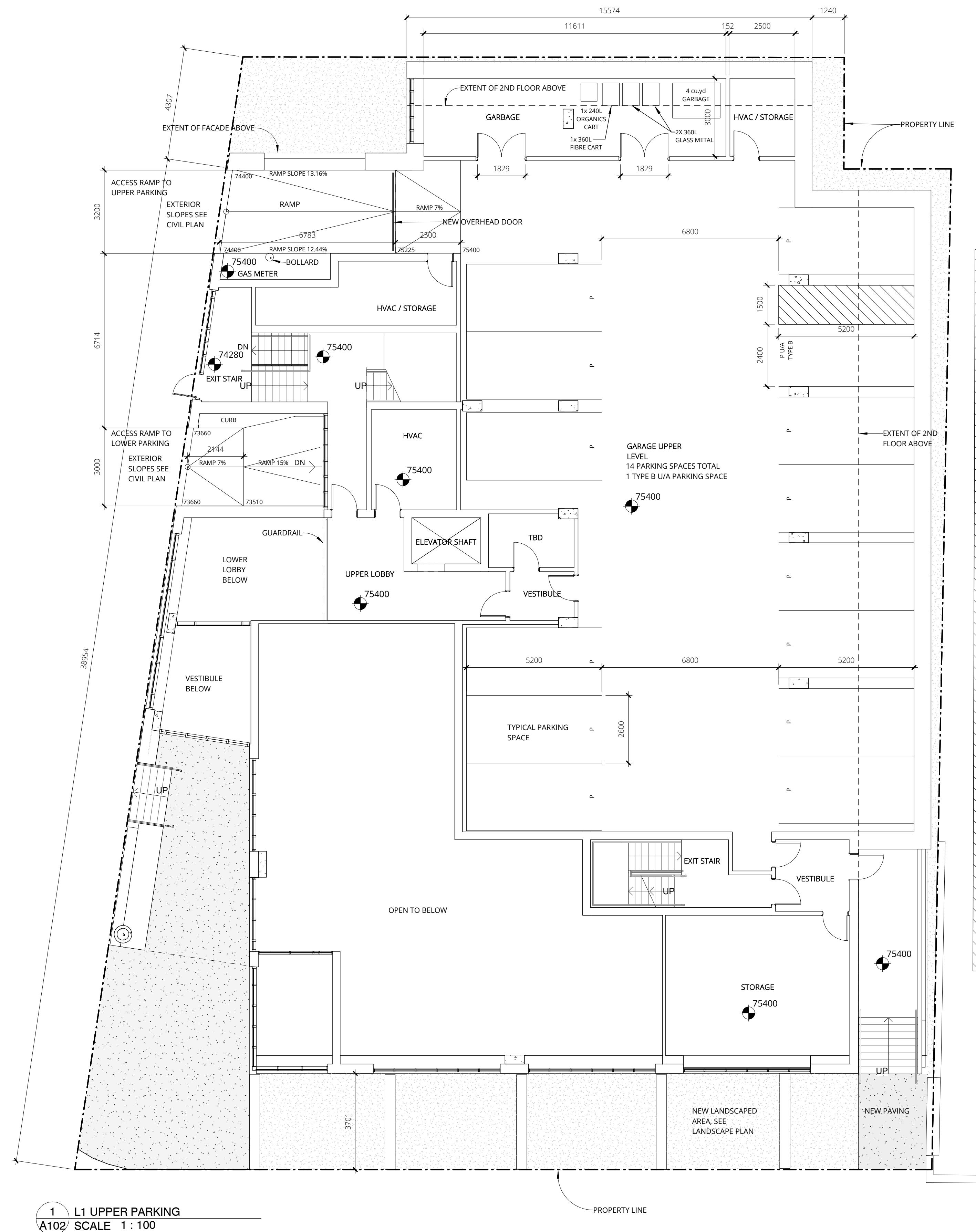


*Saïde Sayah*

**SAIDE SAYAH**  
**MANAGER, CENTRAL BRANCH**  
**PLANNING, INFRASTRUCTURE & ECONOMIC**  
**DEVELOPMENT DEPARTMENT, CITY OF OTTAWA**

**APPROVED**  
 By Saide Sayah at 1:47 pm, Jun 10, 2020

plot scale 1:1

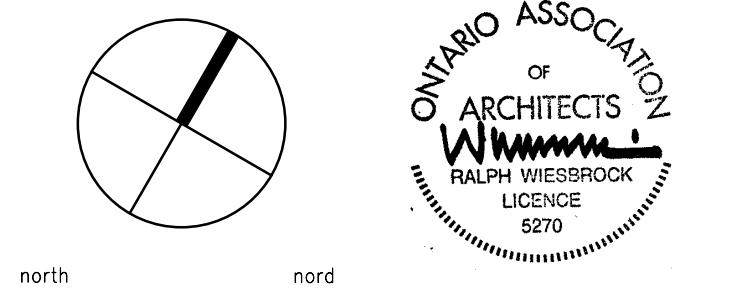


1 L1 UPPER PARKING  
 A102 SCALE 1 : 100

**NOTES:**

Contractor shall check and verify all dimensions on site and report any discrepancies to the Architect before proceeding.

no.	revision	date
1	ISSUED FOR SITE PLAN APPROVAL R1	31 OCT 2019
0	ISSUED FOR SITE PLAN APPROVAL	16 AUG 2019



383 Parkdale Avenue, Suite 201  
 Ottawa Ontario Canada K1Y 4R4

**KWC ARCHITECTS INC.**  
**PHONE** (613) 238-2117  
**FAX** (613) 238-6595  
**E MAIL** kwc@kwc-arch.com

detail no.	1	detail no.
sheet no.	A1	feuille no.

project  
 projet

**JHS - 289 CARLING AVENUE**

**JOHN HOWARD SOCIETY**  
**289 CARLING AVE, OTTAWA**

designed by conçu par	KWC	approved by approuvé par	RZ
drawn by dessiné par	EI	project no. no. du projet	1850
date	2019-MAY-09	scale	as noted

**LEVEL 1 UPPER PARKING PLAN**

FILE No. D07-12-19-0147  
 PLAN No. #18008

revision  
révision

sheet no.  
no. de la feuille

**A102**