

METRIC
DISTANCES AND ELEVATIONS SHOWN ON THIS PLAN ARE IN METRES
AND CAN BE CONVERTED TO FEET BY DIVIDING BY 0.3048

TOPOGRAPHIC SURVEY OF
LOT 10 AND
PART OF LOTS 8, 9 AND 11
REGISTERED PLAN 31326
CITY OF OTTAWA



FAIRHALL, MOFFATT & WOODLAND LIMITED
ONTARIO LAND SURVEYORS

ELEVATION NOTES

- ELEVATIONS SHOWN HEREON ARE REFERRED TO GEODETIC DATUM (CGVD28).
- ELEVATIONS FOR MANHOLE COVERS AND CATCH BASINS HAVE TO BE INDEPENDENTLY CONFIRMED BEFORE THEY CAN BE ACCEPTED FOR FINAL DESIGN OR CONSTRUCTION PURPOSES.
- IT IS THE RESPONSIBILITY OF THE USER OF THIS INFORMATION TO VERIFY THAT THE JOB BENCHMARKS HAVE NOT BEEN ALTERED OR DISTURBED AND THAT THEIR RELATIVE ELEVATION AND DESCRIPTION AGREE WITH THE INFORMATION SHOWN ON THIS DRAWING.

UTILITY NOTES

- THIS DRAWING CANNOT BE ACCEPTED AS ACKNOWLEDGING ANY UNDERGROUND UTILITIES AND IT WILL BE THE RESPONSIBILITY OF THE USER TO CONTACT THE RESPECTIVE UTILITY AUTHORITIES FOR CONFIRMATION OR LOCATION.
- UNDERGROUND UTILITIES, AS REPORTED ON THIS DRAWING, ARE NOT BASED ON AN ACTUAL 'FIELD LOCATE' BY THE RESPECTIVE UTILITY AGENCIES BUT HAVE BEEN COMPILED FROM DATA OBTAINED FROM THE FOLLOWING SOURCE:
a) CITY OF OTTAWA
- BEFORE ANY WORK INVOLVING PROBING, EXCAVATING, ETC., A FIELD LOCATION OF UNDERGROUND PLANT BY THE PERTINENT UTILITY AUTHORITY IS MANDATORY.
- REVISED MARCH 19, 2019 TO SHOW SANITARY SEWER AND MANHOLES AT SOUTHERLY LIMIT OF CARLING AVENUE.

NOTES

- BEARINGS ARE GRID, DERIVED FROM THE NORTHERLY LIMIT OF CARLING AVENUE SHOWN ON PLAN OF SURVEY BY FAIRHALL, MOFFATT AND WOODLAND LIMITED DATED MARCH 6, 2015 (REF#1-CCP472) AS HAVING A BEARING OF N57°56'00".

LEGEND

- - SURVEY MONUMENT SET
- - SURVEY MONUMENT FOUND
- SIB - STANDARD IRON BAR
- SSIB - SHORT STANDARD IRON BAR
- CC - CUT CROSS
- CP - CONCRETE PIN
- (P) - CARLETON CONDOMINIUM PLAN 472
- (M) - MEASURED
- (S) - SET
- DIA. - DIAMETER
- PIN - PROPERTY IDENTIFIER NUMBER
- CB - CATCH BASIN
- MH - MANHOLE
- LS - LAMP STANDARD
- UP - UTILITY POLE
- ⊥ - GUY WIRE AND ANCHOR
- - BOLLARD
- - SIGN
- - CONIFEROUS TREE
- - DECIDUOUS TREE
- W— - WATERMAIN
- UH— - OVERHEAD UTILITY WIRES
- UH— - UNDERGROUND HYDRO
- UB— - UNDERGROUND BELL
- G— - GAS MAIN
- ST— - STORM SEWER
- S— - SANITARY SEWER
- C— - CURB
- ⊙ - JUNCTION BOX
- - MONITORING WELL
- ⊙ - WATER VALVE
- ⊙ - FIRE HYDRANT
- INV. - INVERT

THIS IS NOT A
VALID COPY
UNLESS EMBOSSED
WITH SEAL

SURVEYOR'S CERTIFICATE

I CERTIFY THAT:
1. THIS SURVEY AND PLAN ARE CORRECT AND IN ACCORDANCE WITH THE SURVEYS ACT, THE SURVEYORS ACT, THE LAND TITLES ACT AND THE REGULATIONS MADE UNDER THEM.
2. THE SURVEY WAS COMPLETED ON AUGUST 15, 2018.

2019/08/21
DATE
JOHN H. GUTRI
ONTARIO LAND SURVEYOR

ASSOCIATION OF ONTARIO
LAND SURVEYORS
PLAN SUBMISSION FORM
2060907

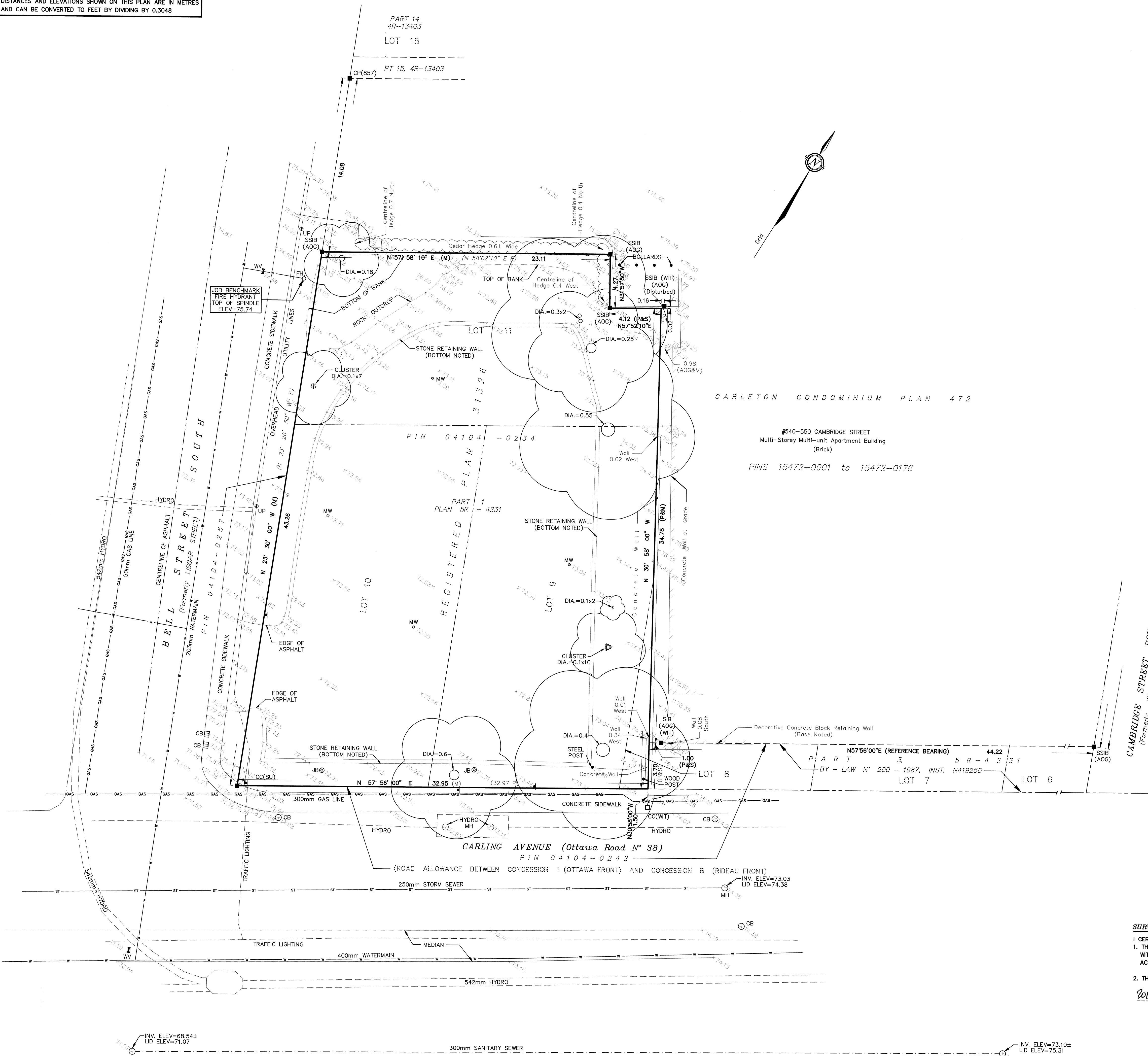
THIS PLAN IS NOT VALID
UNLESS IT IS AN EMBOSSED
ORIGINAL COPY
ISSUED BY THE SURVEYOR
IN ACCORDANCE WITH
REGULATION 1026, SECTION 29 (3).

**Fairhall
Moffatt &
Woodland**
ONTARIO LAND SURVEYORS
Surveys and Land Information Services
100-600 TERRY FOX DRIVE, KANATA, ONTARIO K2L 4B6
TEL: (613) 591-2280 FAX: (613) 591-1495
www.fmw.on.ca

OT TAWA

JOB No. Y24100
E 367282
N 5029263
REFERENCE No. 8 - 31326
S:\085\Y24100\DWG\y241_topo.dwg (KG)

© COPYRIGHT 2018. REPRODUCTION, ALTERATION OR DISTRIBUTION OF THIS PLAN WITHOUT THE WRITTEN CONSENT OF FAIRHALL, MOFFATT & WOODLAND LIMITED IS PROHIBITED.



CARLETON CONDOMINIUM PLAN 472
#540-550 CAMBRIDGE STREET
Multi-Storey Multi-Unit Apartment Building
(Brick)
PINS 15472-0001 to 15472-0176

INV. ELEV=68.54±
LID ELEV=71.07

INV. ELEV=73.03±
LID ELEV=75.31