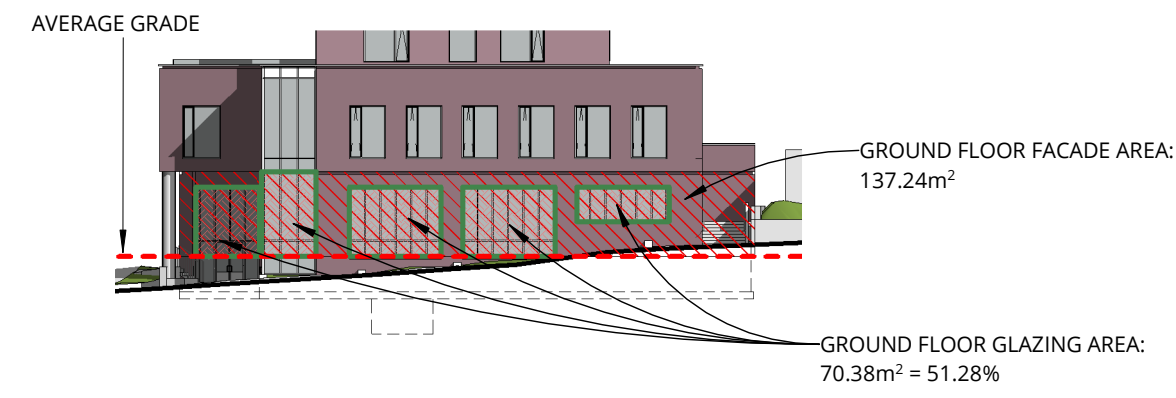


**GROUND FLOOR GLAZING**

TOTAL GLAZING SOUTH FACADE (CARLING AVE):  
51.28% OF GROUND FLOOR FACADE



3 South Ground Floor Glazing  
A201 SCALE 1 : 400

95181 T/O ROOF

92229 T/O L6 RESIDENTIAL UNITS

89303 T/O L5 RESIDENTIAL UNITS

86376 T/O L4 RESIDENTIAL UNITS

83450 T/O L3 OFFICES AND RESIDENTIAL

78750 T/O L2 OFFICES

75400 T/O L1 UPPER PARKING

73550 T/O AVERAGE GRADE

72000 T/O L0 LOWER PARKING/  
BASEMENT MAIN  
ENTRANCES AND OFFICE

1 ELEVATION SOUTH - CARLING AVE.  
A201 SCALE 1 : 100

95181 T/O ROOF

92229 T/O L6 RESIDENTIAL UNITS

89303 T/O L5 RESIDENTIAL UNITS

86376 T/O L4 RESIDENTIAL UNITS

83450 T/O L3 OFFICES AND RESIDENTIAL

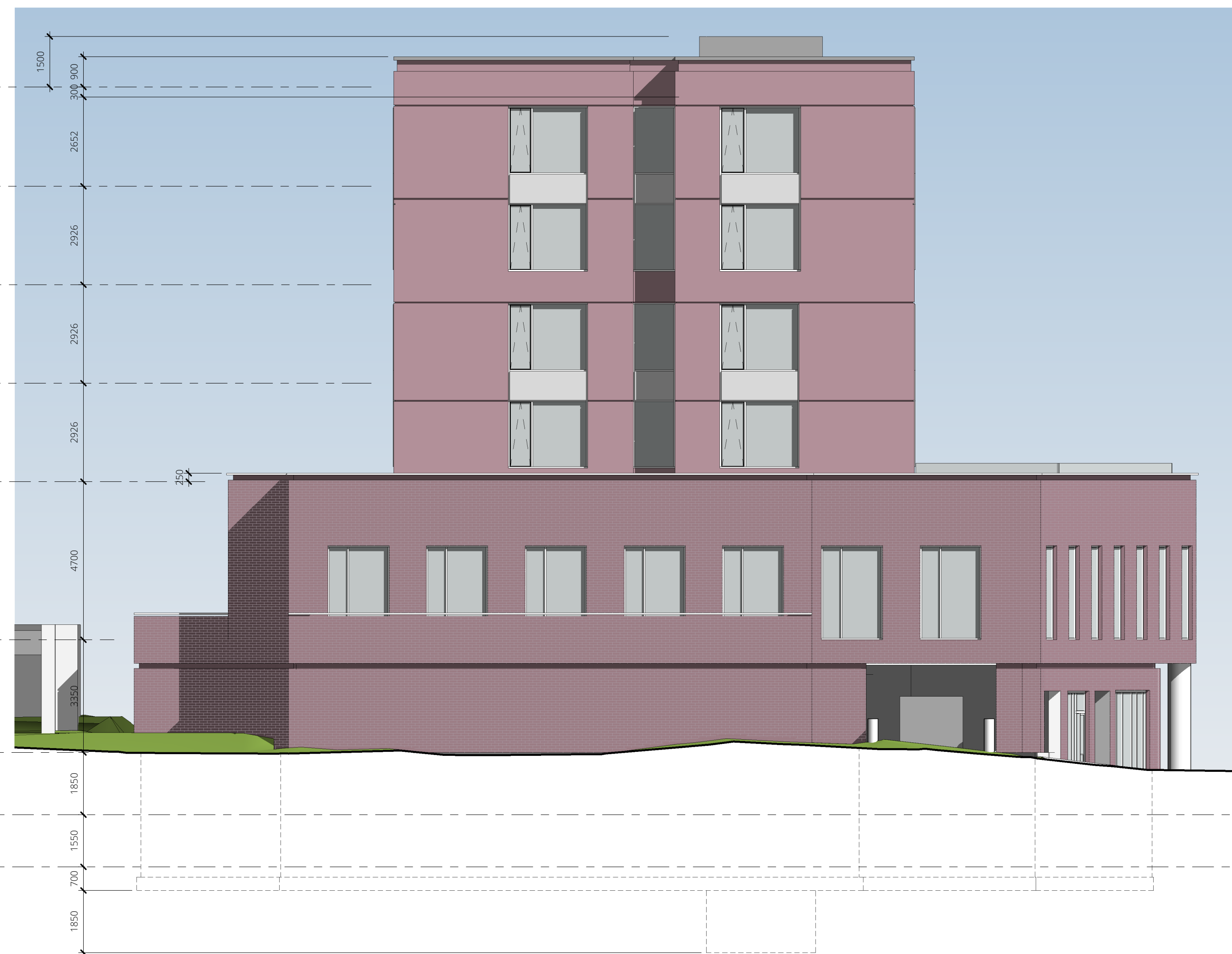
78750 T/O L2 OFFICES

75400 T/O L1 UPPER PARKING

73550 T/O AVERAGE GRADE

72000 T/O L0 LOWER PARKING/  
BASEMENT MAIN  
ENTRANCES AND OFFICE

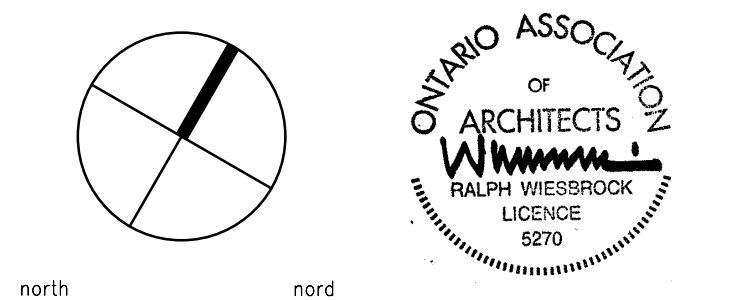
2 ELEVATION NORTH  
A201 SCALE 1 : 100



**NOTES:**

Contractor shall check and verify all dimensions on site and report any discrepancies to the Architect before proceeding.

0	ISSUED FOR SITE PLAN APPROVAL	16 AUG 2019
no.	revision	date



383 Parkdale Avenue, Suite 201  
Ottawa Ontario Canada K1Y 4R4

**KWC ARCHITECTS INC.**

PHONE (613) 238-2117  
FAX (613) 238-6595  
E MAIL kwc@kwc-arch.com

detail no.	1	detail no.
sheet no.	A1	feuille no.

project  
projet

**JHS - 289 CARLING AVENUE**

**JOHN HOWARD SOCIETY  
289 CARLING AVE, OTTAWA**

designed by conçu par	KWC	approved by approuvé par	RZ
drawn by dessiné par	EI	project no. no. du projet	1850
date	2019-MAY-09	scale	as noted

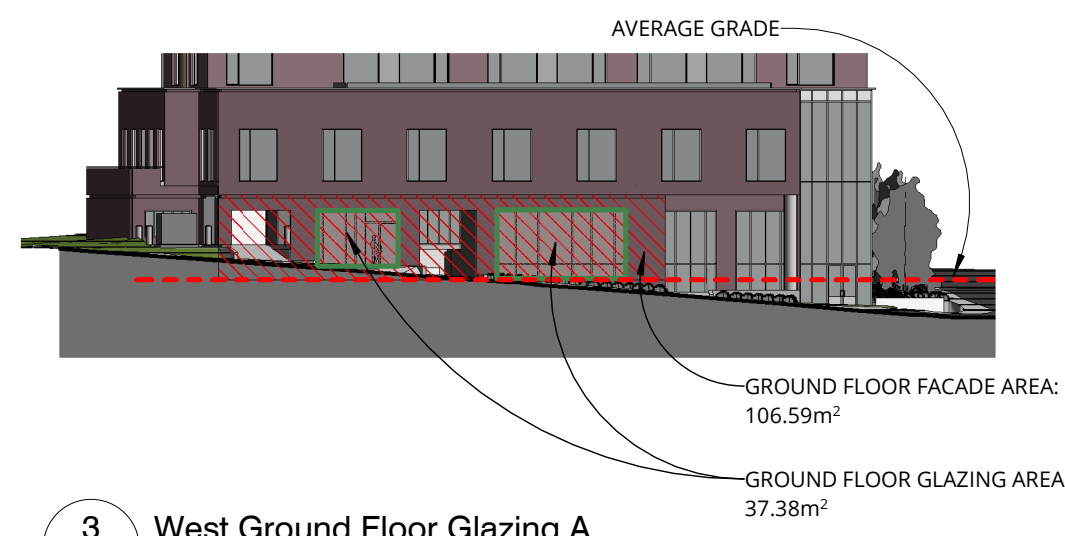
drawing / dessin

**SOUTH AND NORTH  
ELEVATIONS**

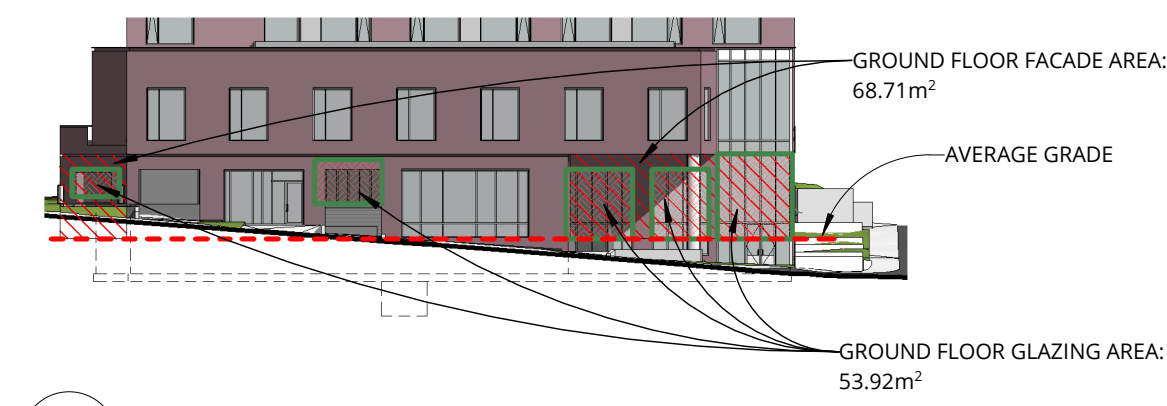
plot scale 1:1

**GROUND FLOOR GLAZING**

TOTAL GLAZING AREA WEST FACADE (BELL ST):  
 106.59m<sup>2</sup> + 68.71m<sup>2</sup> = 175.30m<sup>2</sup>  
 TOTAL GLAZING:  
 37.38m<sup>2</sup> + 53.92m<sup>2</sup> = 91.30m<sup>2</sup> = 52.08% OF GROUND FLOOR FACADE



**3 West Ground Floor Glazing A**  
 A202 SCALE 1 : 400



**4 West Ground Floor Glazing B**  
 A202 SCALE 1 : 400



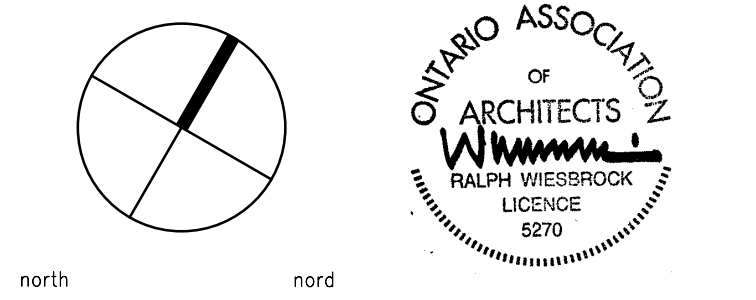
plot scale 1:1

SHEET SIZE: ARCH D (24"x36")

**NOTES:**

Contractor shall check and verify all dimensions on site and report any discrepancies to the Architect before proceeding.

0	ISSUED FOR SITE PLAN APPROVAL	16 AUG 2019
no.	revision	date



383 Parkdale Avenue, Suite 201  
 Ottawa Ontario Canada K1Y 4R4  
**KWC ARCHITECTS INC.**  
 PHONE (613) 238-2117  
 FAX (613) 238-6595  
 E MAIL kwc@kwc-arch.com

detail no. 1 detail no.  
 sheet no. A1 feuille no.

project JHS - 289 CARLING AVENUE  
 projet

JOHN HOWARD SOCIETY  
 289 CARLING AVE, OTTAWA

designed by KWC approved by RZ  
 conçu par KWC approuvé par RZ  
 drawn by E1 project no. 1850  
 dessiné par E1 no. du projet 1850  
 date 2019-MAY-09 scale as noted  
 drawing / dessin

**WEST AND EAST ELEVATIONS**

revision 2 sheet no. A202  
 révision no. de la feuille