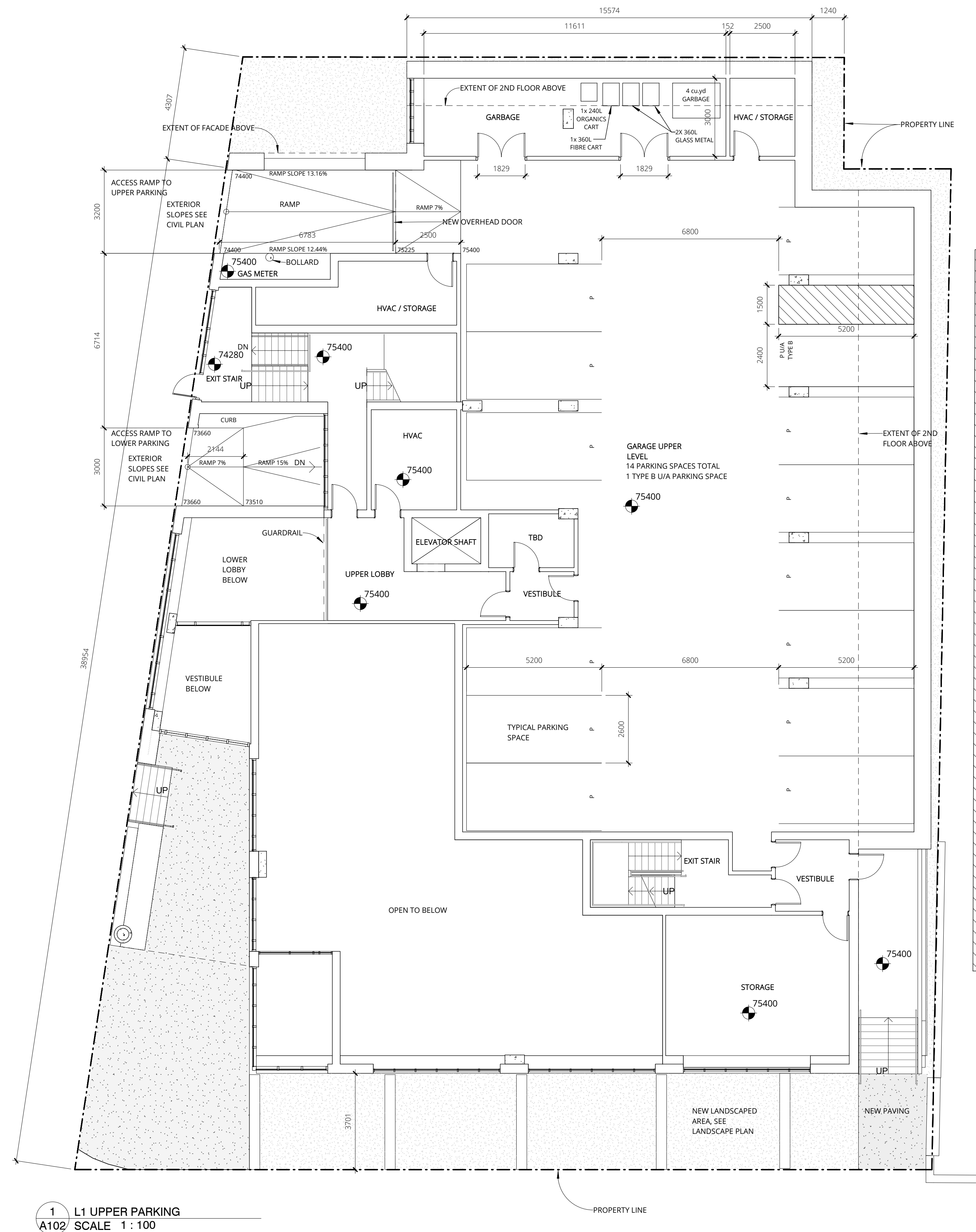


plot scale 1:1

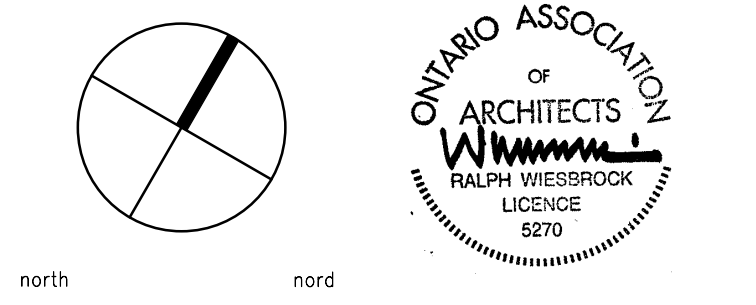


1 L1 UPPER PARKING
A102 SCALE 1 : 100

NOTES:

Contractor shall check and verify all dimensions on site and report any discrepancies to the Architect before proceeding.

no.	revision	date
1	ISSUED FOR SITE PLAN APPROVAL R1	31 OCT 2019
0	ISSUED FOR SITE PLAN APPROVAL	16 AUG 2019



383 Parkdale Avenue, Suite 201
Ottawa Ontario Canada K1Y 4R4

KWC ARCHITECTS INC.

PHONE (613) 238-2117
FAX (613) 238-6595
E MAIL kwc@kwc-arch.com

detail no.	1	detail no.
sheet no.	A1	feuille no.

project
projet

JHS - 289 CARLING AVENUE

JOHN HOWARD SOCIETY
289 CARLING AVE, OTTAWA

designed by conçu par	KWC	approved by approuvé par	RZ
drawn by dessiné par	EI	project no. no. du projet	1850
date	2019-MAY-09	scale	as noted

drawing / dessin

LEVEL 1 UPPER PARKING PLAN

FILE No. D07-12-19-0147
PLAN No. #18008

revision
révision

sheet no.
no. de la feuille

A102