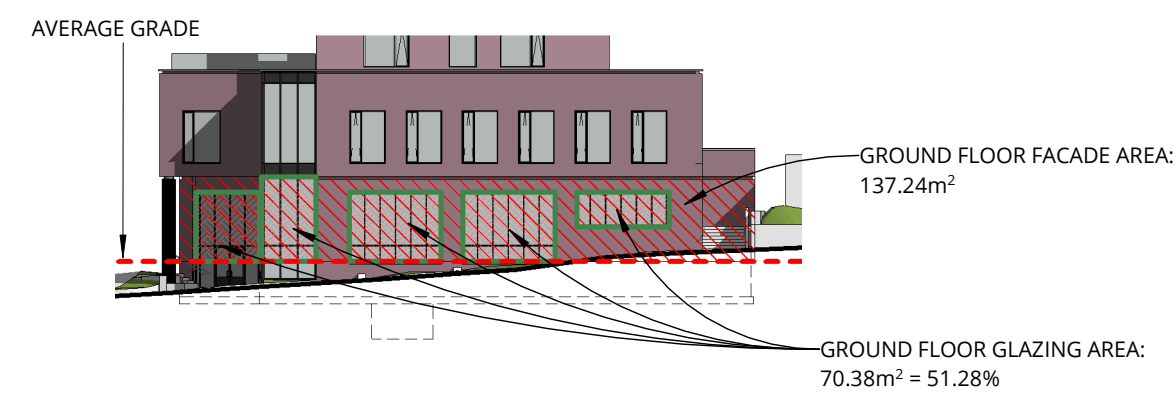


GROUND FLOOR GLAZING

TOTAL GLAZING SOUTH FACADE (CARLING AVE):
51.28% OF GROUND FLOOR FACADE



3 South Ground Floor Glazing
A201 SCALE 1 : 400

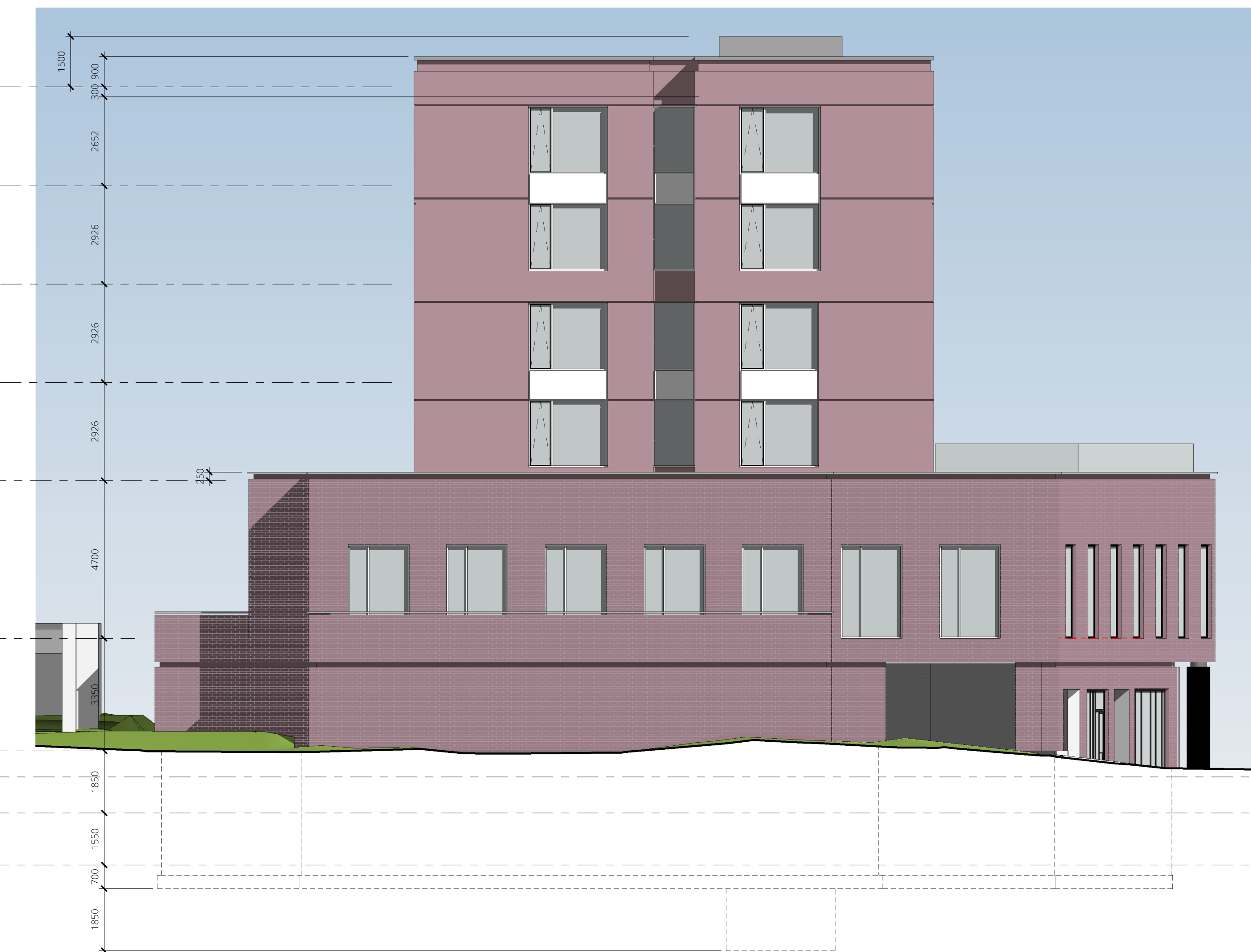
- 95181 T/O ROOF
- 92229 T/O L6 RESIDENTIAL UNITS
- 89303 T/O L5 RESIDENTIAL UNITS
- 86376 T/O L4 RESIDENTIAL UNITS
- 83450 T/O L3 OFFICES AND RESIDENTIAL
- 78750 T/O L2 OFFICES
- 75400 T/O L1 UPPER PARKING
- 74624 T/O LEVEL 9
- 73550 T/O AVERAGE GRADE
- 72000 T/O L0 LOWER PARKING/
BASEMENT MAIN
ENTRANCES AND OFFICE

1 ELEVATION SOUTH - CARLING AVE.
A201 SCALE 1 : 100



- 95181 T/O ROOF
- 92229 T/O L6 RESIDENTIAL UNITS
- 89303 T/O L5 RESIDENTIAL UNITS
- 86376 T/O L4 RESIDENTIAL UNITS
- 83450 T/O L3 OFFICES AND RESIDENTIAL
- 78750 T/O L2 OFFICES
- 75400 T/O L1 UPPER PARKING
- 74624 T/O LEVEL 9
- 73550 T/O AVERAGE GRADE
- 72000 T/O L0 LOWER PARKING/
BASEMENT MAIN
ENTRANCES AND OFFICE

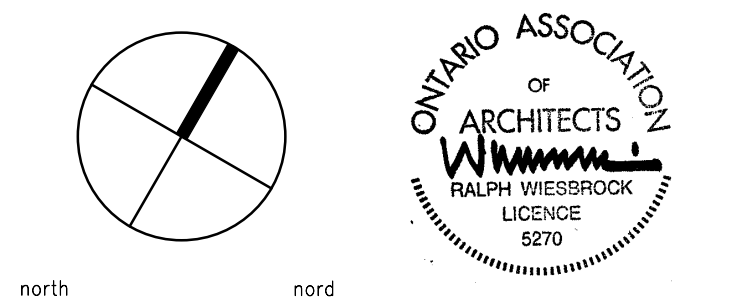
2 ELEVATION NORTH
A201 SCALE 1 : 100



NOTES:

Contractor shall check and verify all dimensions on site and report any discrepancies to the Architect before proceeding.

no.	revision	date
1	ISSUED FOR SITE PLAN APPROVAL R1	31 OCT 2019
0	ISSUED FOR SITE PLAN APPROVAL	16 AUG 2019



KWC ARCHITECTS INC.
383 Parkdale Avenue, Suite 201
Ottawa Ontario Canada K1Y 4R4
PHONE (613) 238-2117
FAX (613) 238-6595
E MAIL kwc@kwc-arch.com

detail no.	1	detail no.
sheet no.	A1	feuille no.

project
projet
JHS - 289 CARLING AVENUE

designed by conçu par	KWC	approved by approuvé par	RZ
drawn by dessiné par	EI	project no. no. du projet	1850
date	2019-MAY-09	scale	as noted

SOUTH AND NORTH ELEVATIONS

FILE No. D07-12-19-0147
PLAN No. #18008

revision
révision

sheet no.
no. de la feuille

A201

plot scale 1:1