

OWNER:
 NIVO DEVELOPMENTS INC.
 255 MICHAEL COMPLAND DRIVE
 OTTAWA, ONTARIO, K2M 0M5
 613-224-6200

THE EXISTING JOB BENCHMARK IS ON A UTILITY POLE THAT WILL BE RELOCATED. THE SURVEYOR SHALL ESTABLISH AN ALTERNATIVE JOB BENCHMARK PRIOR TO THE COMMENCEMENT OF CONSTRUCTION.

AN EXISTING TRANSFORMER AND STREET LIGHT ARE CONNECTED TO POLE TO BE REMOVED.

DRAWING LEGEND

CB	CATCH BASIN
MH	MANHOLE
CB/MH	CATCH BASIN/MANHOLE
MH	SANITARY MANHOLE
SPL	SPRINGLINE OF PIPE
INV	INVERT OF PIPE
ST	SANITARY SEWER
ST	STORM SEWER
WS/WM	WATER SERVICE/WATERMAIN
CS	CURB STOP & STANDPOST
VB	VALVE & VALVE BOX
FT	FIRE HYDRANT
W	WATER METER
W	REMOVE WATER METER READOUT
---	EXISTING GRADE ELEVATION
---	PROPERTY LINE
---	FIRST FLOOR ELEVATION
---	TOP OF FOUNDATION
---	BASEMENT FLOOR ELEVATION
---	UNDERSIDE OF FOOTING

KEY PLAN



No.	DATE	REVISION
1	JUN 14-19	ISSUED FOR APPROVAL
2	AUG 9-19	ISSUED FOR APPROVAL
3	SEP 27-19	ISSUED FOR APPROVAL
4	MAY 5-20	ISSUED FOR COORDINATION
5	JUN 18-20	RE-ISSUED FOR APPROVAL
6	NOV 16-20	RE-ISSUED FOR APPROVAL
7	MAR 15-21	RE-ISSUED FOR APPROVAL

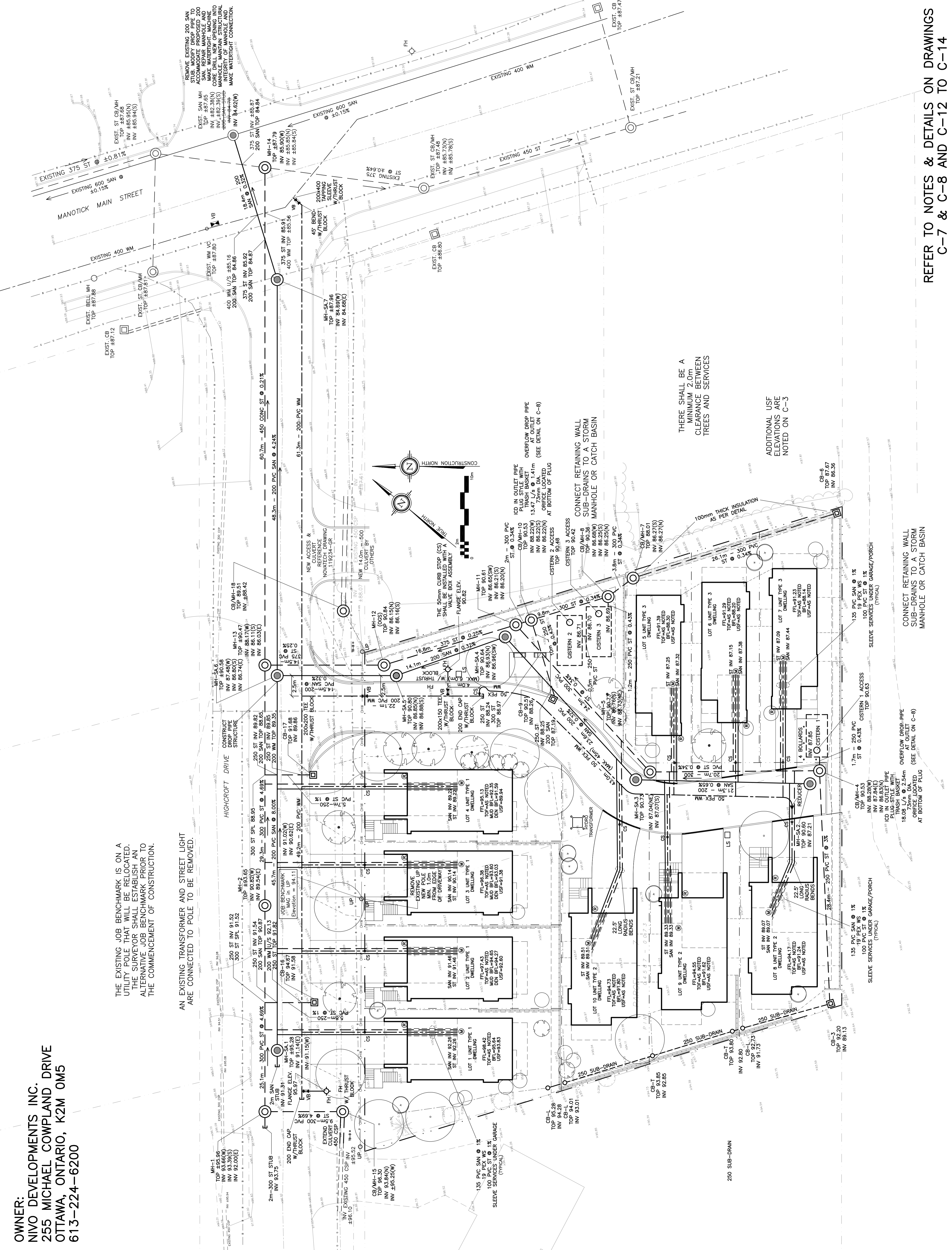
D. B. GRAY ENGINEERING INC.
 700 Long Point Circle
 Ottawa, Ontario
 613-425-8044
 dgray@dbgrayengineering.com

PROPOSED RESIDENTIAL DEVELOPMENT
 1164-1166 HIGHCROFT DR.
 MANOTICK, ONTARIO

SITE SERVICING PLAN

Drawn: D.B.G.
 Hor. Scale: 1:200
 Vert. Scale:
 Date: JUN 14-19
 Job No.: 180335
 Drawing No.: **C-1**
 of **14**

Engineer's Seal: **D.B. GRAY**
 License No.: 77016502
 Date: 19-20
 NOT VALID UNLESS SIGNED & DATED



REFER TO NOTES & DETAILS ON DRAWINGS C-7 & C-8 AND C-12 TO C-14

THERE SHALL BE A MINIMUM 2.0m CLEARANCE BETWEEN TREES AND SERVICES

ADDITIONAL USE ELEVATIONS ARE NOTED ON C-3

CONNECT RETAINING WALL SUB-DRAINS TO A STORM MANHOLE OR CATCH BASIN