

OWNER:
 NIVO DEVELOPMENTS INC.
 255 MICHAEL COMPLAND DRIVE
 OTTAWA, ONTARIO, K2M 0M5
 613-224-6200

THE EXISTING JOB BENCHMARK IS ON A UTILITY POLE THAT WILL BE RELOCATED. THE SURVEYOR SHALL ESTABLISH AN ALTERNATIVE JOB BENCHMARK PRIOR TO THE COMMENCEMENT OF CONSTRUCTION.

AN EXISTING TRANSFORMER AND STREET LIGHT ARE CONNECTED TO POLE TO BE REMOVED AND SHALL BE CONNECTED TO NEW POLE.

DRAWING LEGEND

| | |
|-------|----------------------------|
| CB | CATCH BASIN |
| MH | MANHOLE |
| CB/MH | CATCH BASIN/MANHOLE |
| MH | SANITARY MANHOLE |
| SPL | SPRINGLINE OF PIPE |
| INV | INVERT OF PIPE |
| SAN | SANITARY SEWER |
| ST | STORM SEWER |
| WS/WM | WATER SERVICE/WATERMAIN |
| CS | CURB STOP & STANDPOST |
| VB | VALVE & VALVE BOX |
| PH | FIRE HYDRANT |
| W | WATER METER |
| ⊕ | REMOVE WATER METER READOUT |
| ⊕ | EXISTING GRADE ELEVATION |
| --- | PROPERTY LINE |
| --- | FIRST FLOOR ELEVATION |
| --- | TOP OF FOUNDATION |
| --- | BASEMENT FLOOR ELEVATION |
| --- | UNDERSIDE OF FOOTING |



| No. | DATE | REVISION |
|-----|-----------|-------------------------|
| 8 | MAY 20-21 | RE-ISSUED FOR APPROVAL |
| 7 | MAR 15-21 | RE-ISSUED FOR APPROVAL |
| 6 | NOV 16-20 | RE-ISSUED FOR APPROVAL |
| 5 | JUN 18-20 | RE-ISSUED FOR APPROVAL |
| 4 | MAY 5-20 | ISSUED FOR COORDINATION |
| 3 | SEP 27-19 | RE-ISSUED FOR APPROVAL |
| 2 | AUG 9-19 | ISSUED FOR APPROVAL |
| 1 | JUN 14-19 | PRELIMINARY |

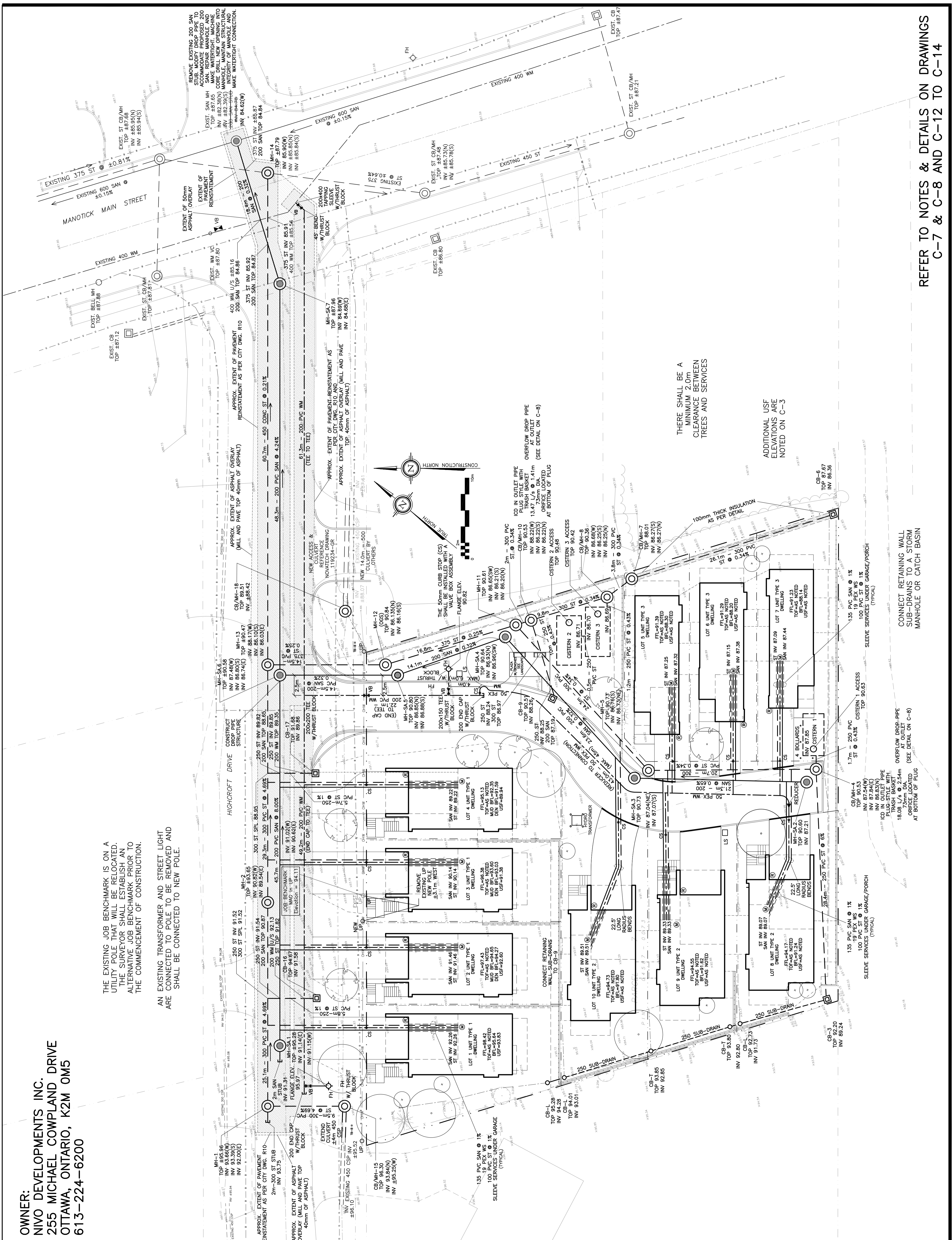
D. B. GRAY ENGINEERING INC.
 700 Long Point Circle
 Ottawa, Ontario
 4gray@dbgrayengineering.com
 613-425-8044

**PROPOSED
 RESIDENTIAL DEVELOPMENT
 1164-1166 HIGHCROFT DR.
 MANOTICK, ONTARIO**

SITE SERVICING PLAN

Engineer's Seal

 Drawn: D.B.G.
 Hor. Scale: 1:200
 Vert. Scale:
 Date: JUN 14-19
 Job No.: 180335
 Drawing No.: **C-1**
 of **14**
 NOT VALID UNLESS SIGNED & DATED



THERE SHALL BE A MINIMUM 2.0m CLEARANCE BETWEEN TREES AND SERVICES

ADDITIONAL USE ELEVATIONS ARE NOTED ON C-3

REFER TO NOTES & DETAILS ON DRAWINGS C-7 & C-8 AND C-12 TO C-14