

OWNER:
NIVO DEVELOPMENTS INC.
255 MICHAEL COMPLAND DRIVE
OTTAWA, ONTARIO, K2M 0M5
613-224-6200

THE EXISTING JOB BENCHMARK IS ON A UTILITY POLE THAT WILL BE RELOCATED. THE SURVEYOR SHALL ESTABLISH AN ALTERNATIVE JOB BENCHMARK PRIOR TO THE COMMENCEMENT OF CONSTRUCTION.

DRAWING LEGEND

CB	CATCH BASIN
MH	MANHOLE
CB/MH	CATCH BASIN/MANHOLE
SPL	SPRINGLINE OF PIPE
INV	INVERT OF PIPE
SAN	SANITARY SEWER
ST	STORM SEWER
WS/WM	WATER SERVICE/WATERMAIN
CS	CURB STOP & STANDPOST
VB	VALVE & VALVE BOX
FM	FIRE HYDRANT
WATER METER	
REMOVED WATER METER HEADOUT	
EXISTING GRADE ELEVATION	
PROPERTY LINE	
FFL	FIRST FLOOR ELEVATION
TOP	TOP OF FOUNDATION
BFL	BASEMENT FLOOR ELEVATION
USF	UNDERSIDE OF FOOTING

KEY PLAN



No.	DATE	REVISION
6	NOV 16-20	RE-ISSUED FOR APPROVAL
5	JUN 18-20	RE-ISSUED FOR APPROVAL
4	MAY 5-20	ISSUED FOR COORDINATION
3	SEP 27-19	RE-ISSUED FOR APPROVAL
2	AUG 9-19	ISSUED FOR APPROVAL
1	JUN 14-19	PRELIMINARY

D. B. GRAY ENGINEERING INC.
 700 Long Point Circle
 Ottawa, Ontario
 613-425-8044
 dgray@dbgrayengineering.com

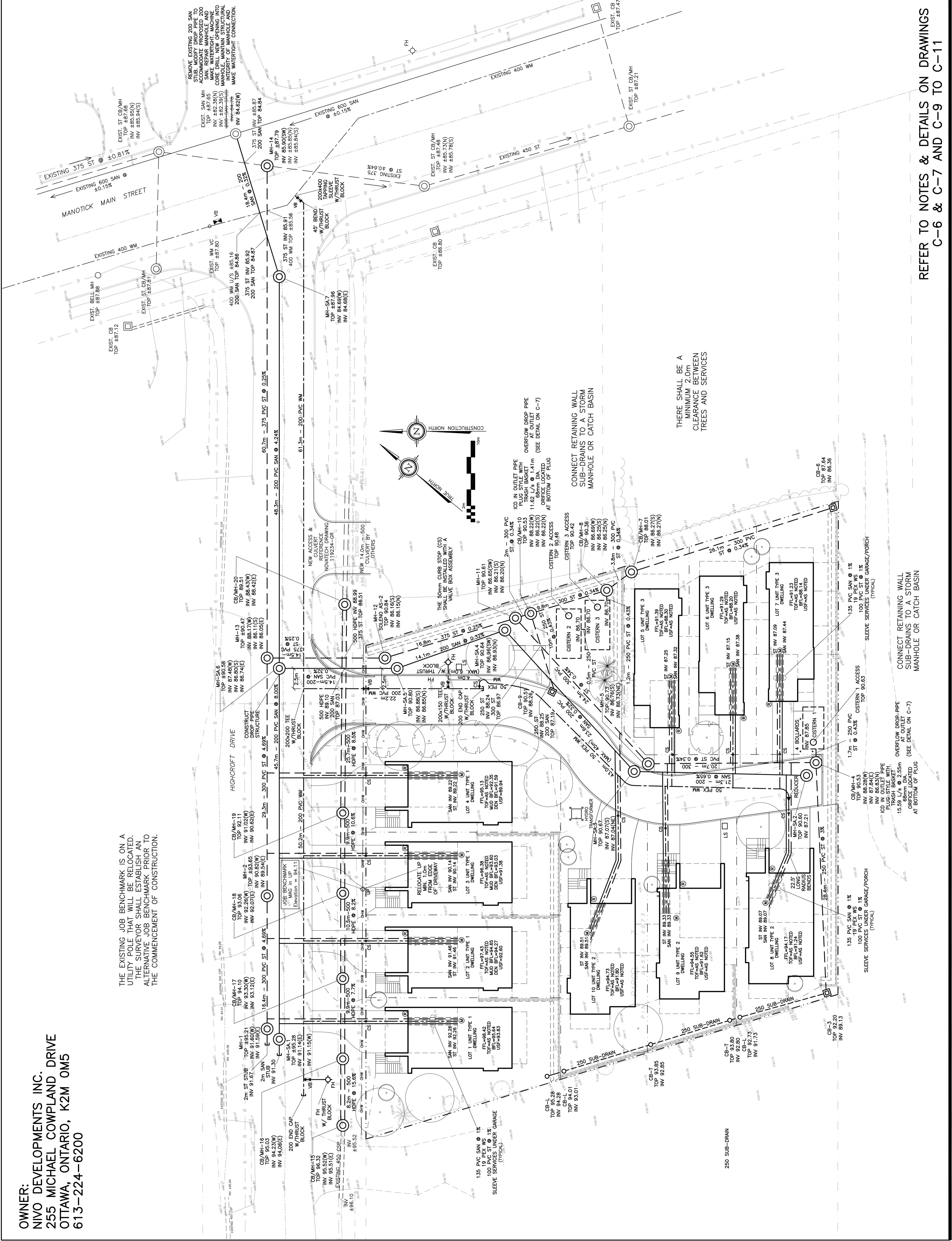
PROPOSED RESIDENTIAL DEVELOPMENT
1164-1166 HIGHCROFT DR.
 MANOTICK, ONTARIO

SITE SERVICING PLAN

Engineer's Seal: **D.B. GRAY**, P. ENG. (17016502), (1997-19) **PROFESSIONAL ENGINEER**

Drawn: **D.B.G.**
 Hor. Scale: **1:200**
 Vert. Scale: **1:20**
 Date: **JUN 14-19**
 Job No.: **18035**
 Drawing No.: **C-1** of **10**

NOT VALID UNLESS SIGNED & DATED



THERE SHALL BE A MINIMUM 2.0m CLEARANCE BETWEEN TREES AND SERVICES

CONNECT RETAINING WALL SUB-DRAINS TO A STORM MANHOLE OR CATCH BASIN

REFER TO NOTES & DETAILS ON DRAWINGS C-6 & C-7 AND C-9 TO C-11