

REVISION	MAY 17, 2021
REVISED FOR SITE PLAN CONTROL APPROVAL APPLICATION	MARCH 11, 2021
ISSUE FOR PERMIT	MAY 27, 2020
REVISION	DATE

LAMPKIN
Structural Services Ltd.

34 - 5330 CANOTEK ROAD
OTTAWA, ONTARIO K1J 9C4
PHONE: (613) 745-6437

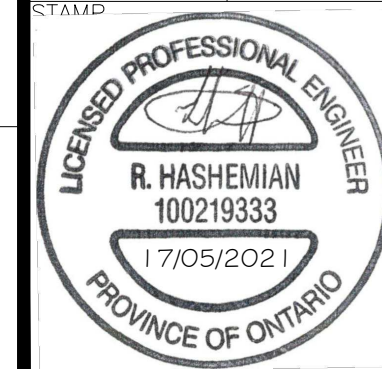
CLIENT
NIVO DEVELOPMENTS INC.

PROJECT
1164-1166 HIGCROFT DRIVE

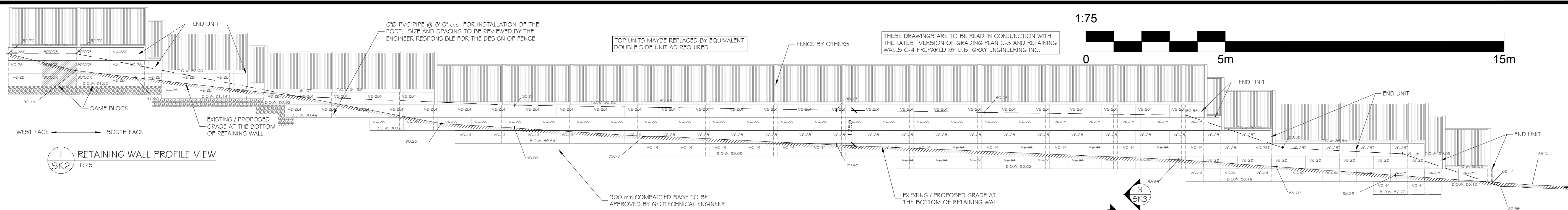
OTTAWA ONTARIO

TITLE
NEW RETAINING WALL

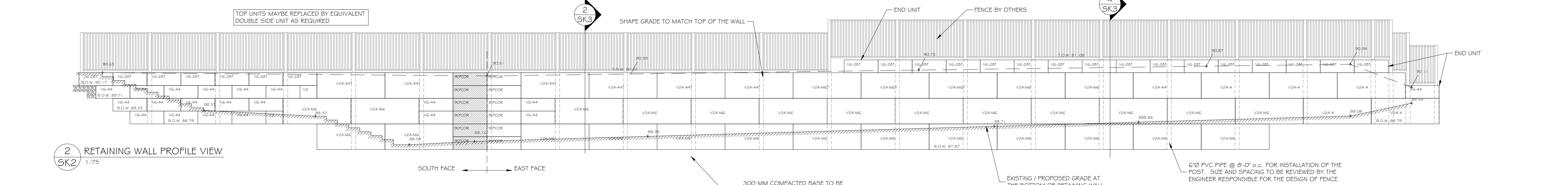
PROJECT # 20-14289	DRAWN BY R.L.	DRAWN BY R.H.
SCALE AS NOTED	DATE 17/05/2021	DRAWING #



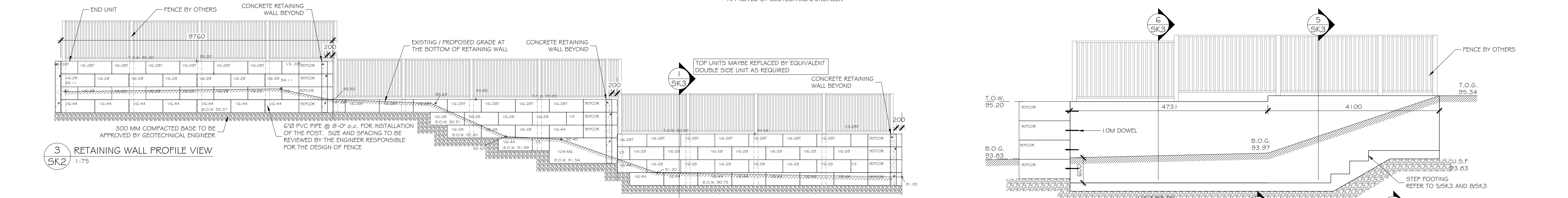
SKI
REV#1



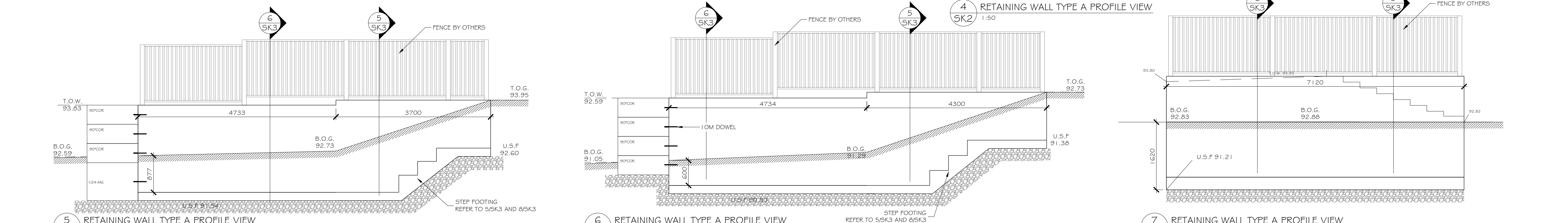
1 SK2 1:75
RETAINING WALL PROFILE VIEW



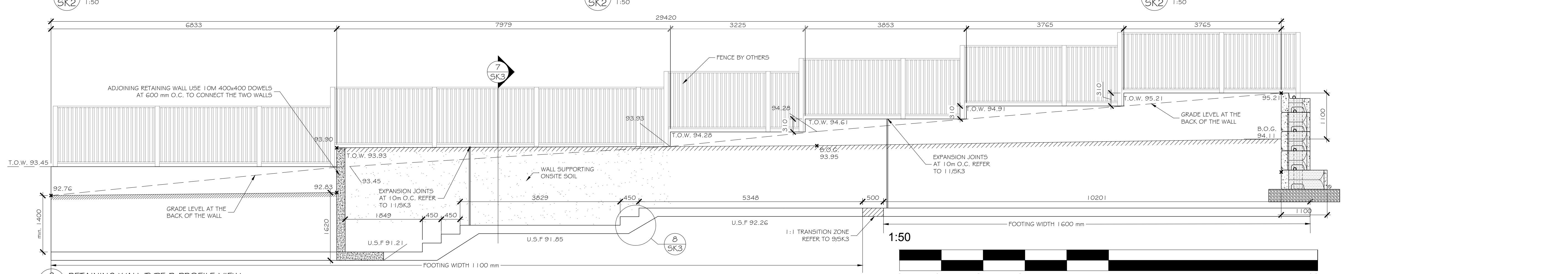
2 SK2 1:75
RETAINING WALL PROFILE VIEW



3 SK2 1:75
RETAINING WALL PROFILE VIEW



4 SK2 1:50
RETAINING WALL TYPE A PROFILE VIEW



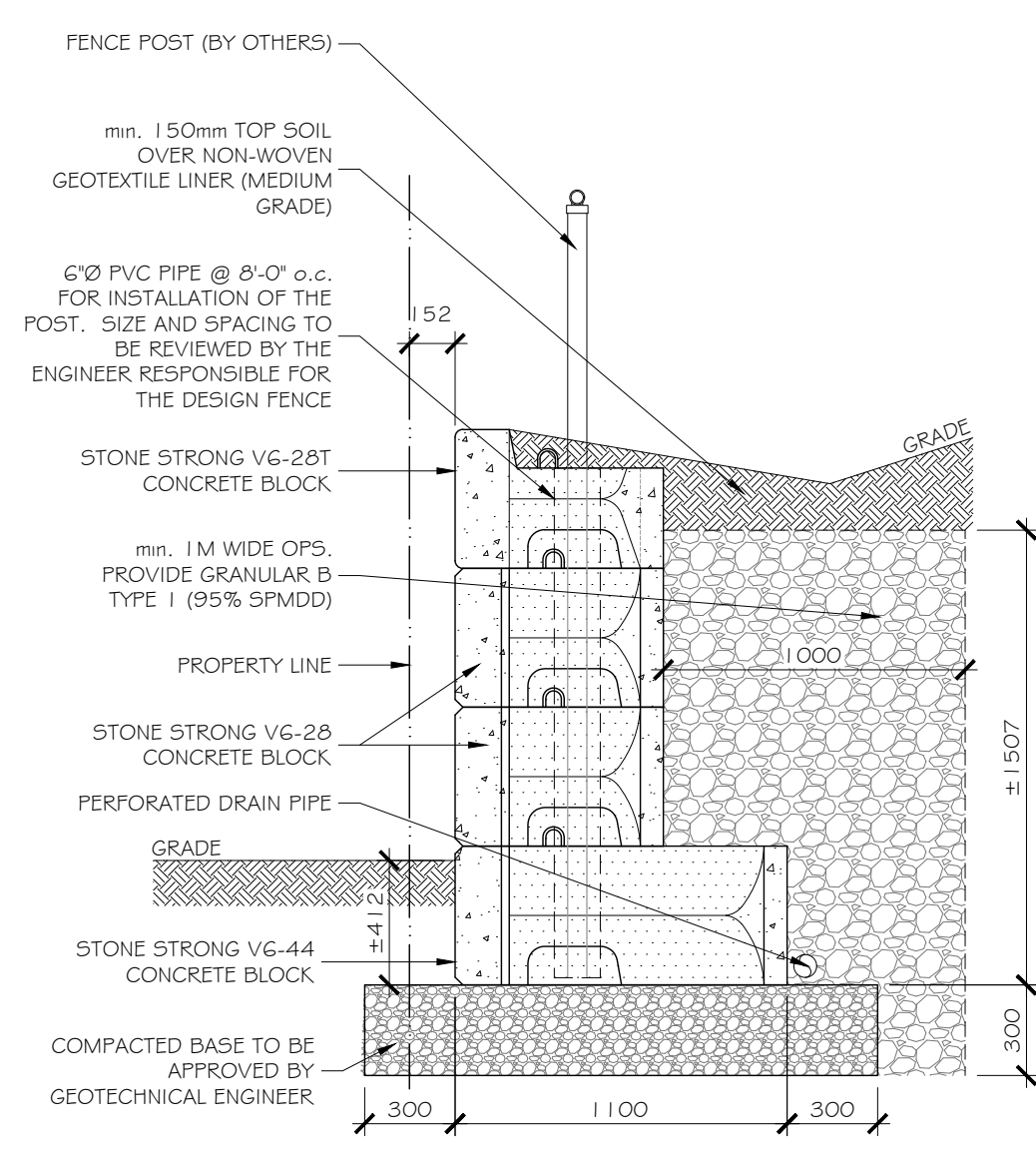
5 SK2 1:50
RETAINING WALL TYPE A PROFILE VIEW



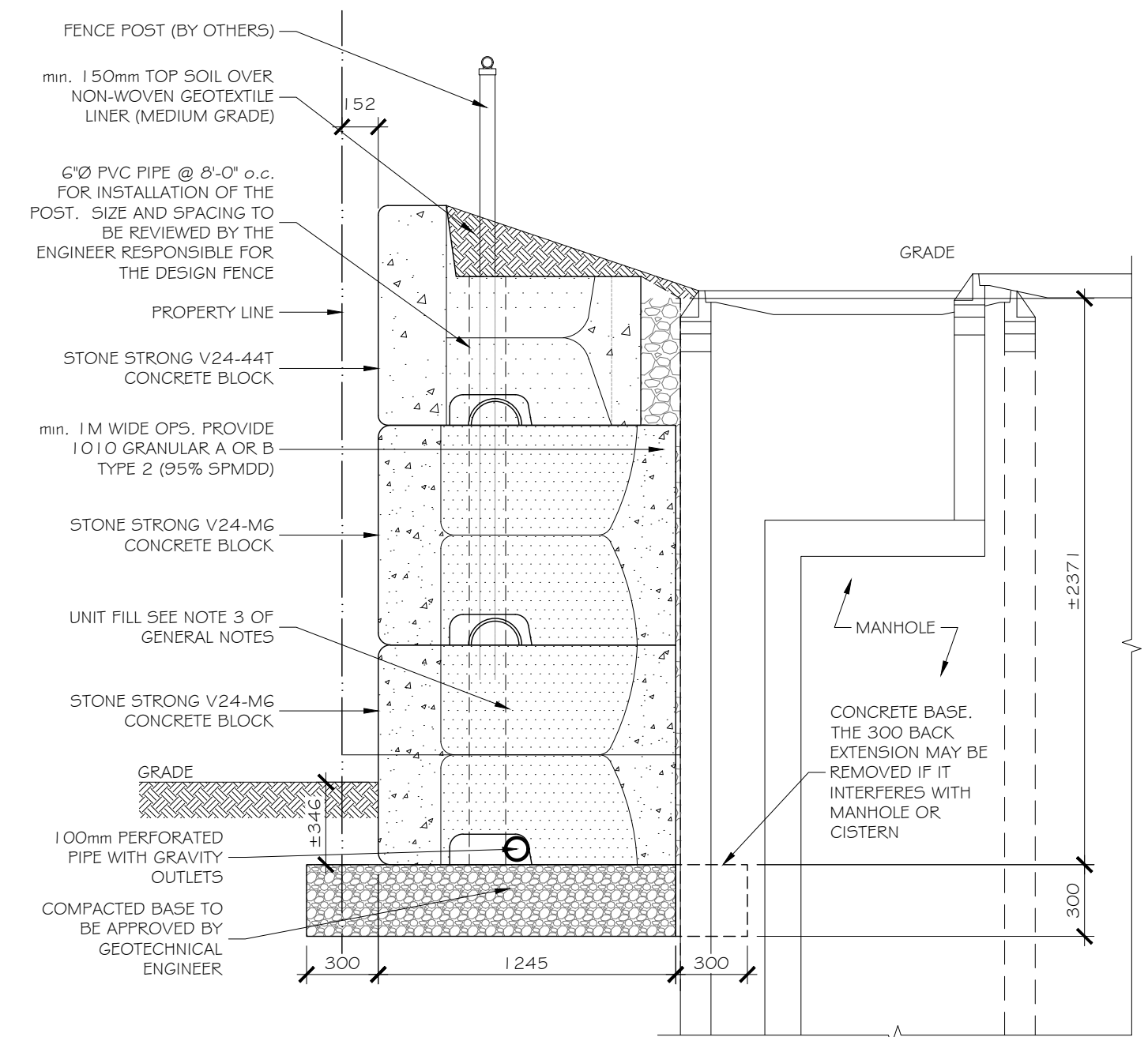
8 SK2 1:50
RETAINING WALL TYPE B PROFILE VIEW

REVISION	MAY 17, 2021
REVISED FOR SITE PLAN CONTROL APPROVAL APPLICATION	MARCH 11, 2021
ISSUE FOR PERMIT	MAY 27, 2020
REVISION	DATE
LAMPKIN Structural Services Ltd.	
34 - 5330 CANOTEK ROAD OTTAWA, ONTARIO K1J 9C4 PHONE: (613) 745-6437	
CLIENT	NIVO DEVELOPMENTS INC.
PROJECT	1164-1166 HIGCROFT DRIVE
OTTAWA	ONTARIO
NEW RETAINING WALL	
PROJECT # 20-14289	DRAWN BY R.L.
ESTATED	R.H.
DATE 17/05/2021	SCALE AS NOTED
DRAWING #	17/05/2021
SK2	
REV#1	

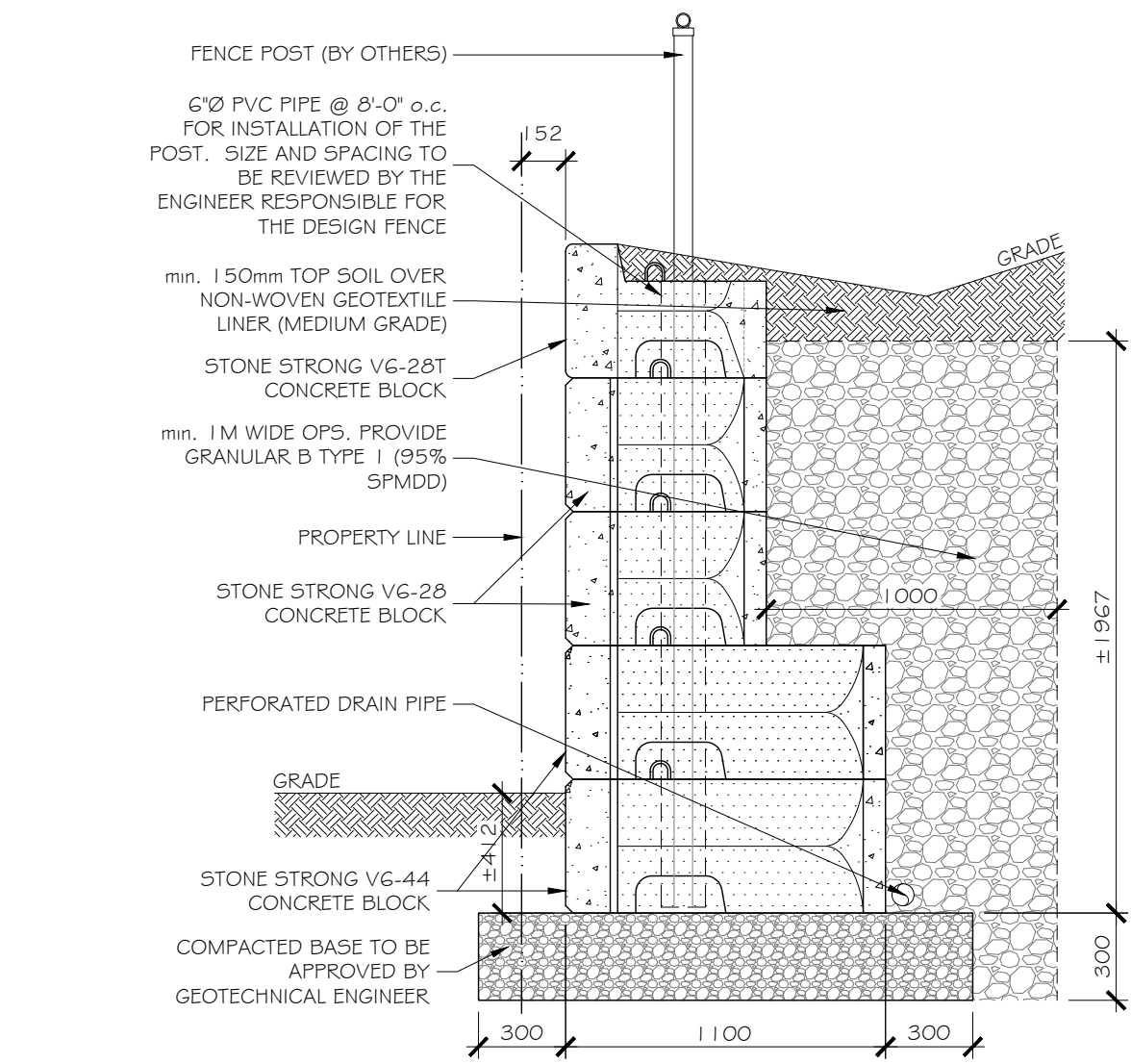
THESE DRAWINGS ARE TO BE READ IN CONJUNCTION WITH THE LATEST VERSION OF GRADING PLAN C-3 AND RETAINING WALLS C-4 PREPARED BY D.B. GRAY ENGINEERING INC.



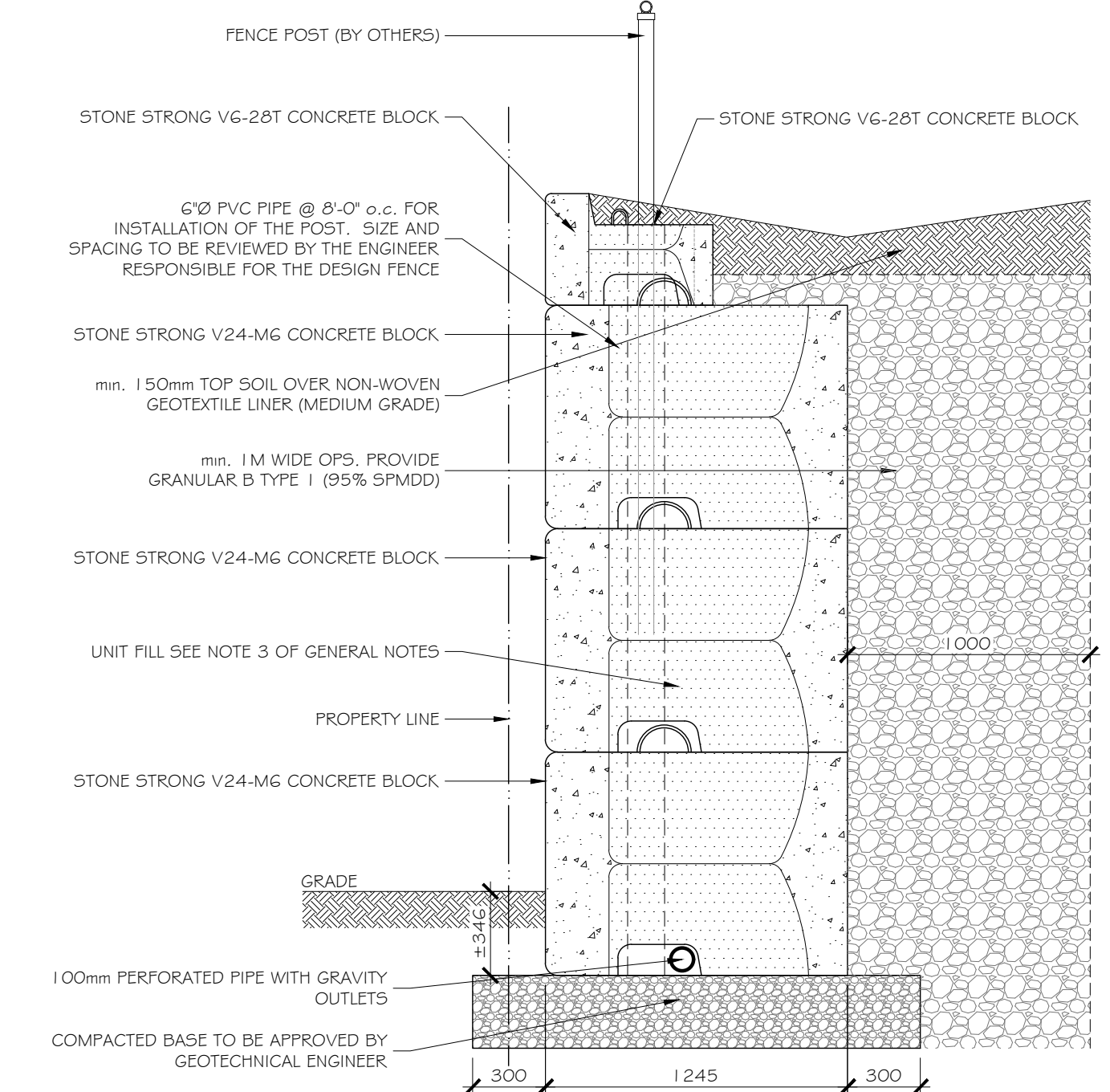
1 STONE STRONG RETAINING WALL CROSS SECTION
SK3 1:25



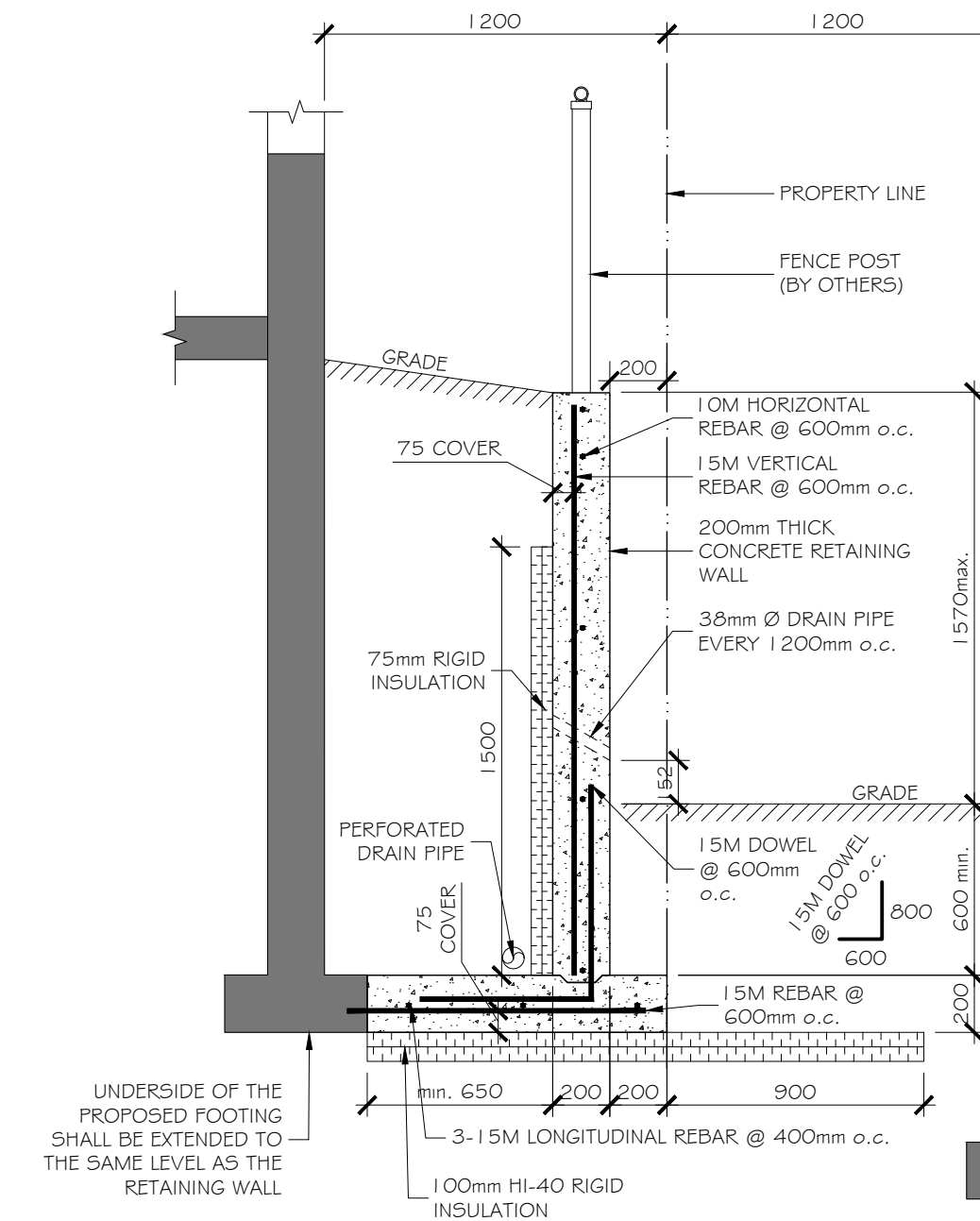
2 STONE STRONG RETAINING WALL CROSS SECTION
SK3 1:25



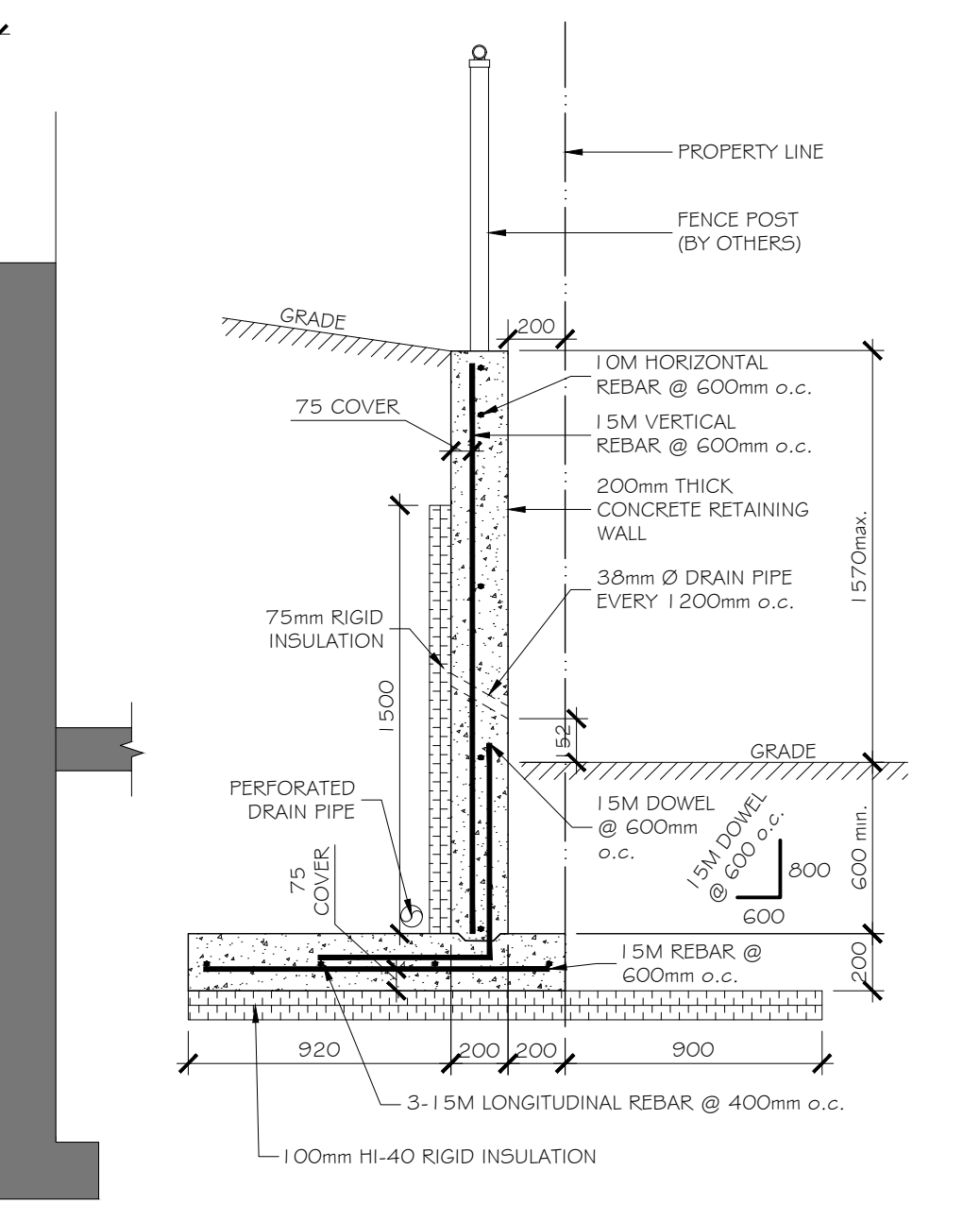
3 STONE STRONG RETAINING WALL CROSS SECTION
SK3 1:25



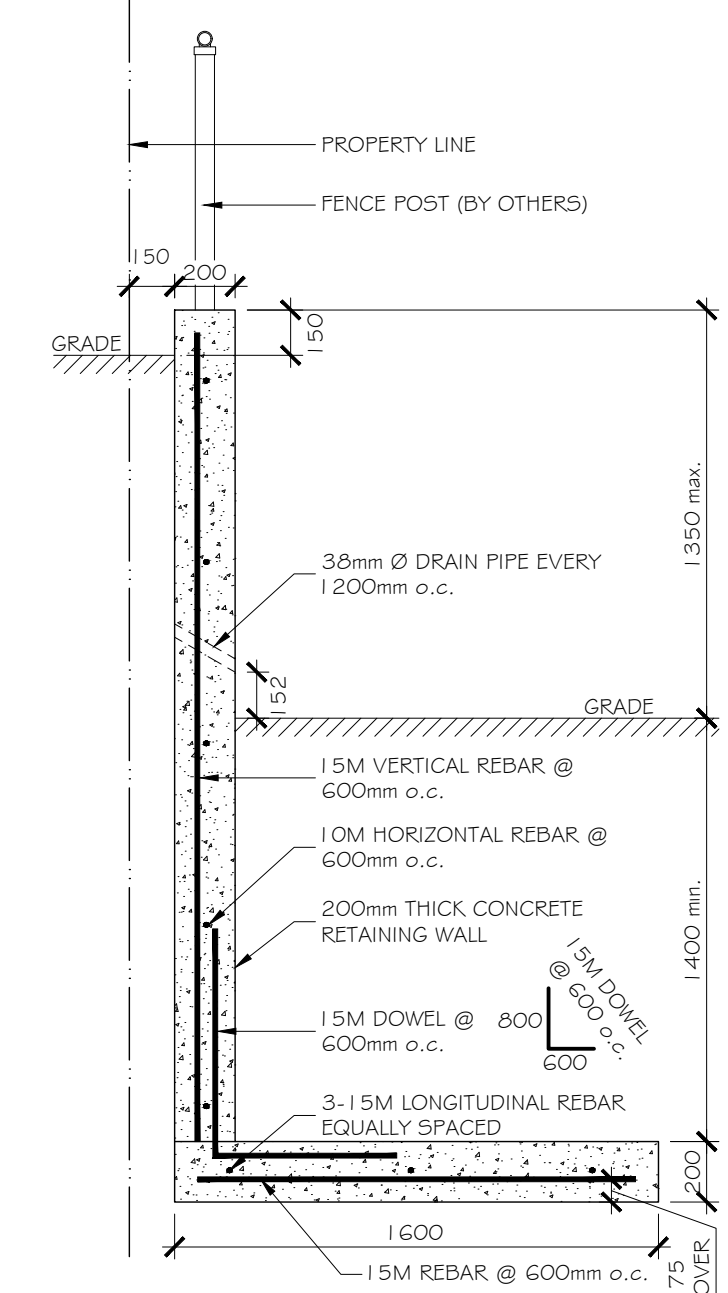
4 STONE WALL CROSSING RETAINING WALL CROSS SECTION
SK3 1:25



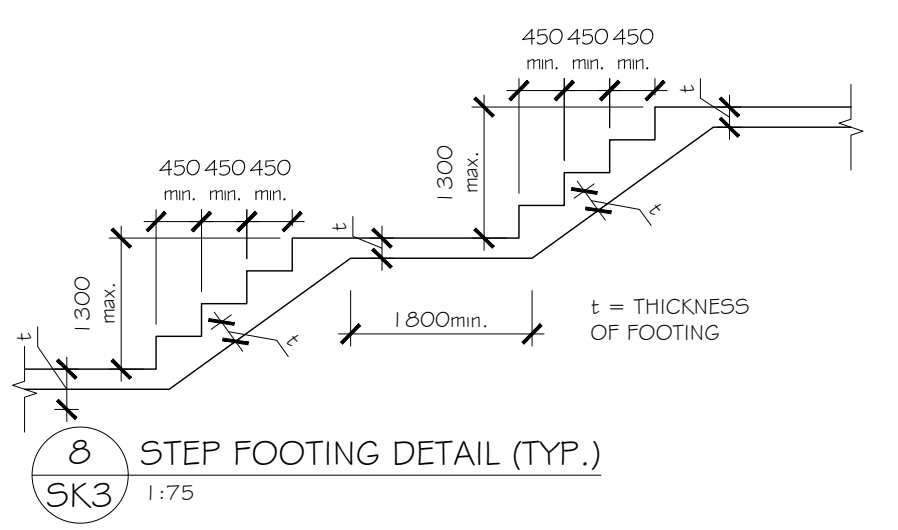
5 R.C. RETAINING WALL TYPE A #1
SK3 1:25



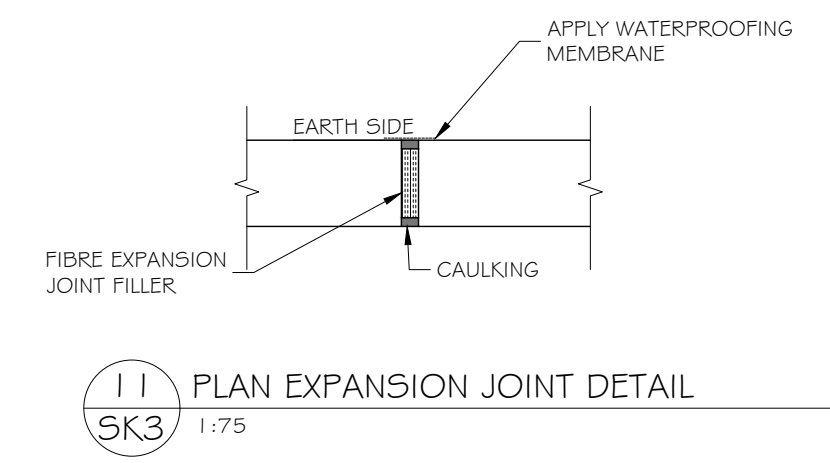
6 R.C. RETAINING WALL TYPE A #2
SK3 1:25



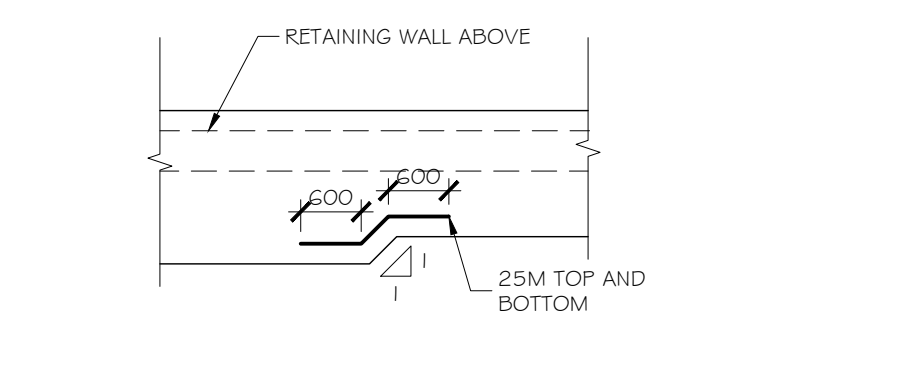
7 R.C. RETAINING WALL TYPE B
SK3 1:25



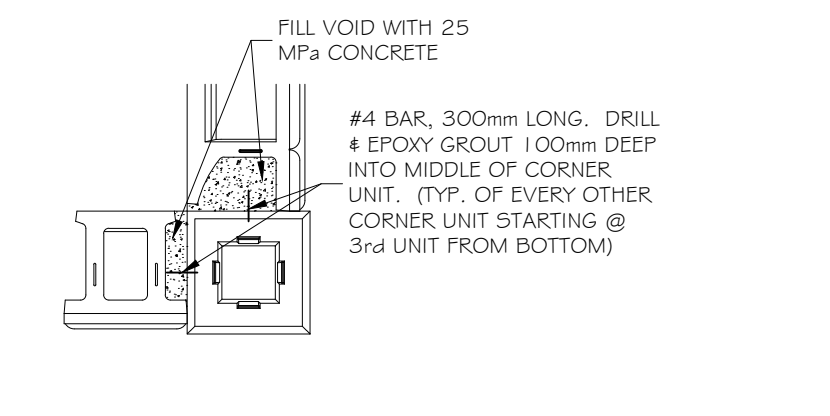
8 STEP FOOTING DETAIL (TYP.)
SK3 1:75



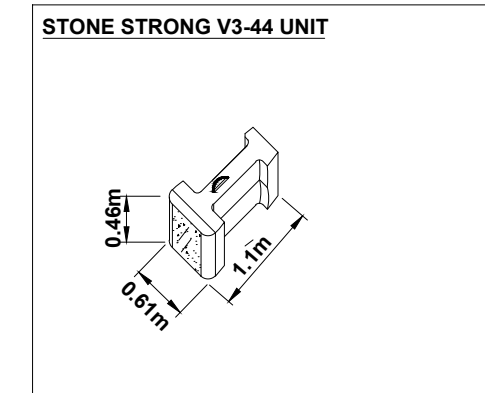
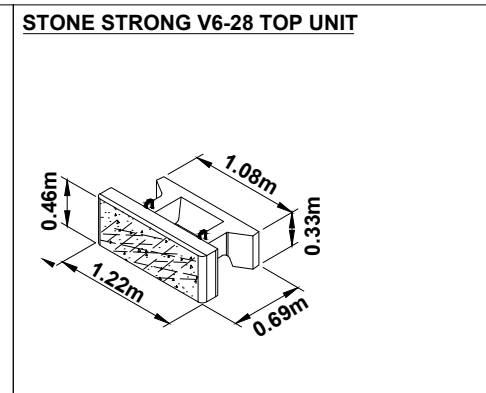
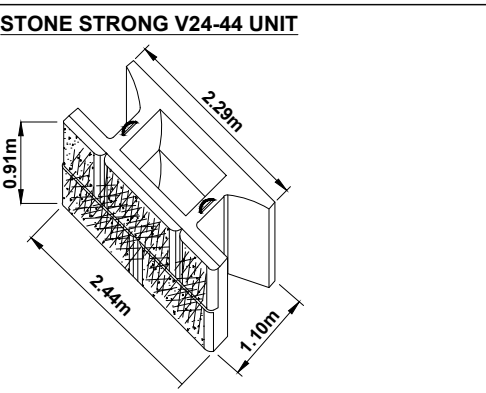
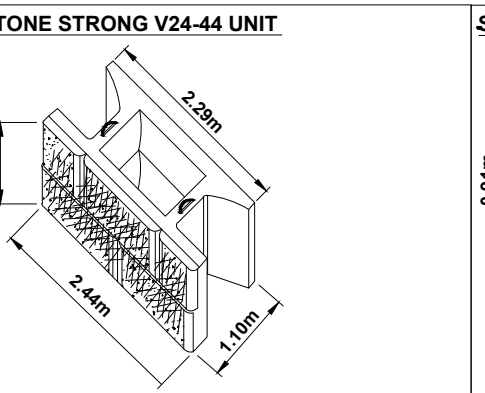
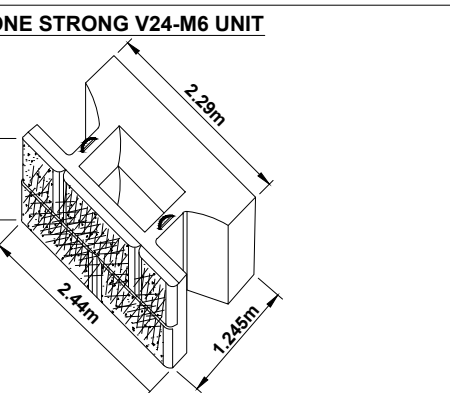
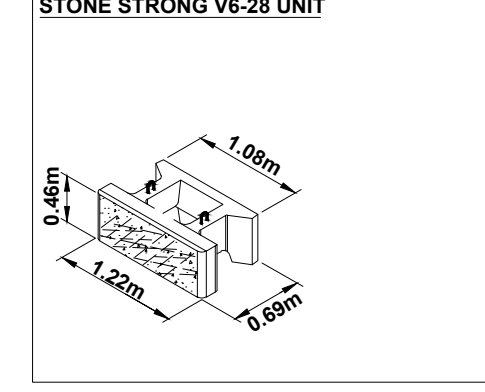
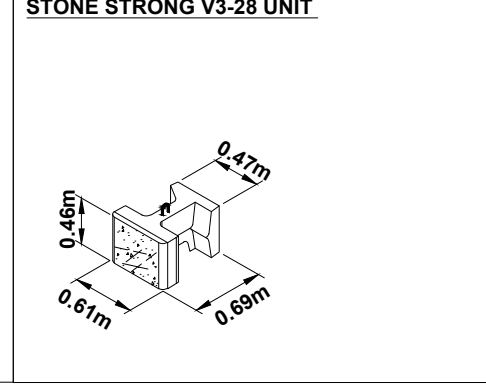
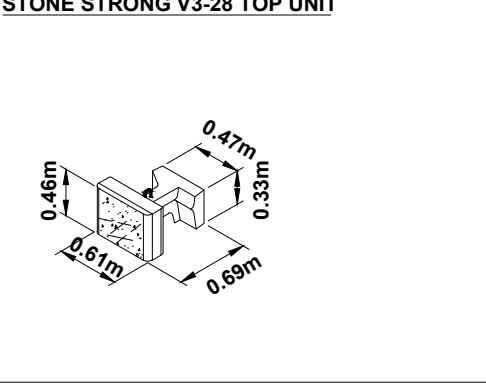
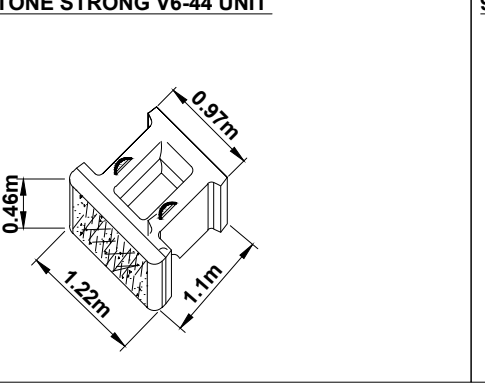
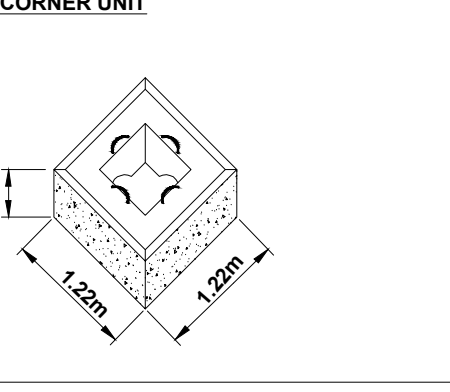
11 PLAN EXPANSION JOINT DETAIL
SK3 1:75



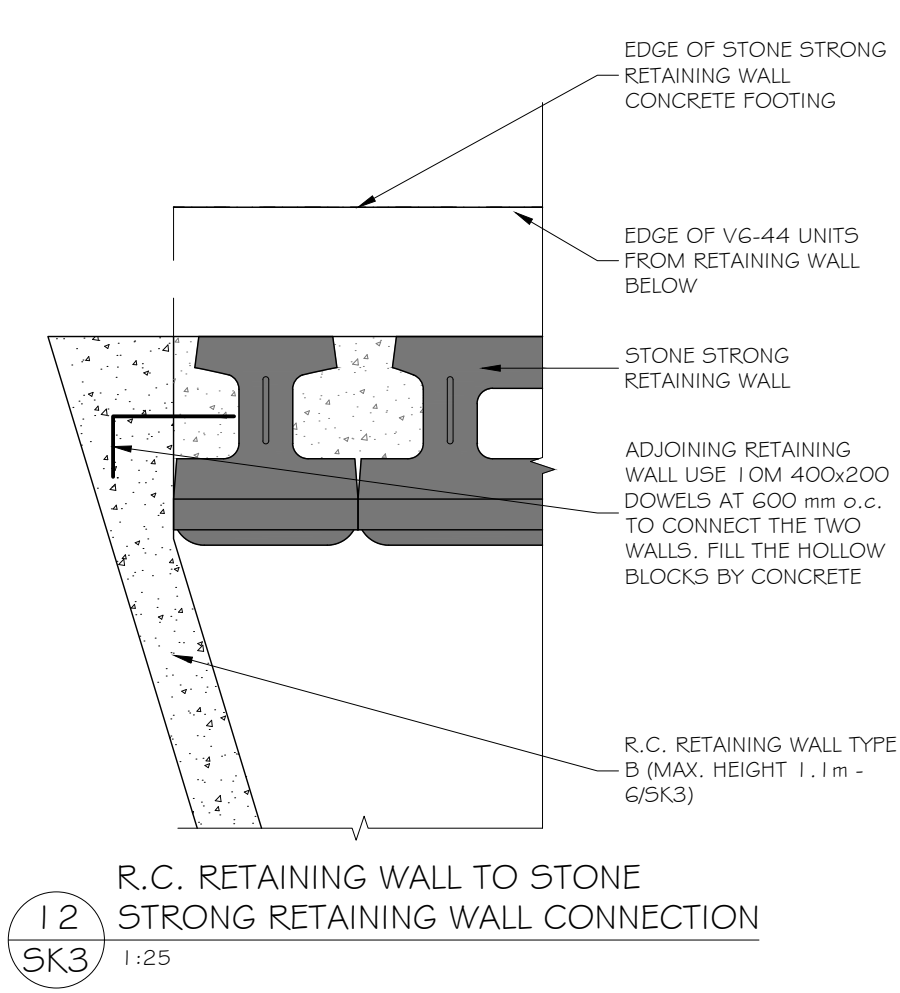
9 FOOTING WIDTH TRANSITION DETAIL PLAN (TYP.)
SK3 1:75



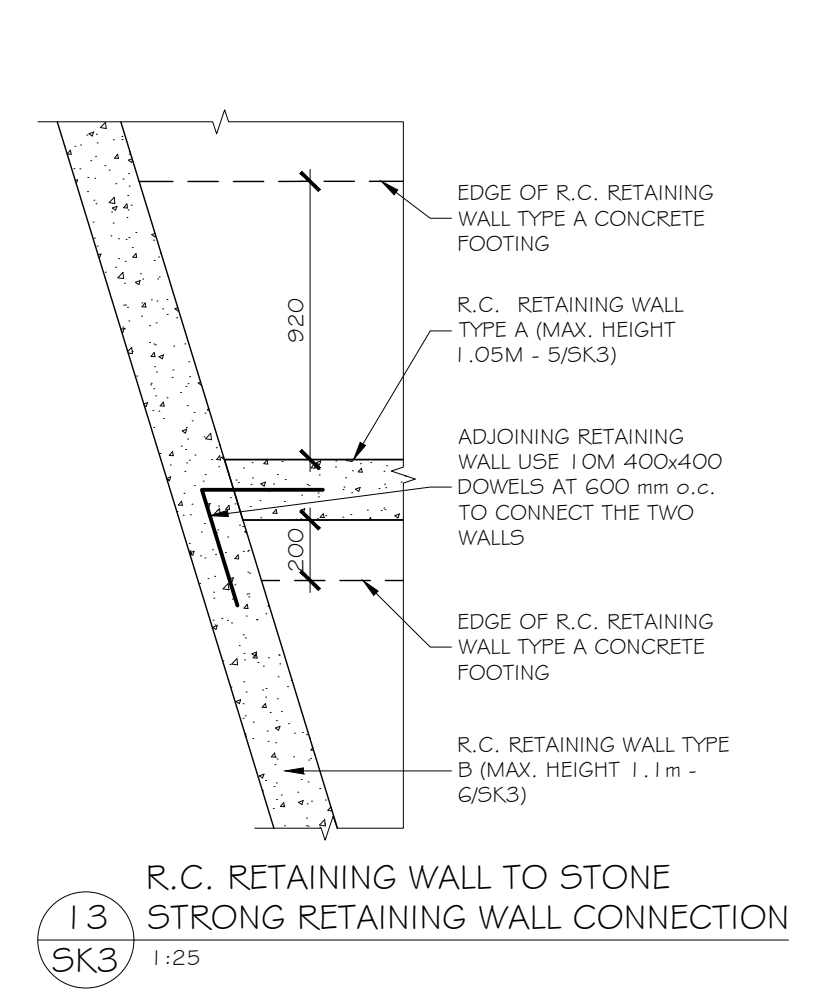
10 90° CORNER TIEBACK
SK3 N.T.S.

 <p>STONE STRONG V3-44 UNIT</p>	 <p>STONE STRONG V6-28 TOP UNIT</p>	 <p>STONE STRONG V24-44 UNIT</p>	 <p>STONE STRONG V24-44 UNIT</p>	 <p>STONE STRONG V24-M6 UNIT</p>
 <p>STONE STRONG V6-28 UNIT</p>	 <p>STONE STRONG V3-28 UNIT</p>	 <p>STONE STRONG V3-28 TOP UNIT</p>	 <p>STONE STRONG V6-44 UNIT</p>	 <p>90° CORNER UNIT</p>

11 INDIVIDUAL UNITS VIEW
SK3 N.T.S.



12 R.C. RETAINING WALL TO STONE STRONG RETAINING WALL CONNECTION
SK3 1:25



13 R.C. RETAINING WALL TO STONE STRONG RETAINING WALL CONNECTION
SK3 1:25

- GENERAL NOTES:
- ANY DEVIATION FROM CONDITIONS SHOWN ON THESE DRAWINGS, SHALL BE REPORTED TO THE ENGINEER.
 - DESIGN LOADS:
 - SOIL PRESSURE $K_p = 3.0$
 - $K_a = .33$
 - $\delta = 20kN/m^2$
 - SURCHARGE (q) = 3.6 kPa
 - LATERAL LOAD ON FENCE (LL) = 0.75 kNm
 - FACTOR OF SAFETY: 1.5
 - MATERIALS:
 - A) CONCRETE STRENGTH AT 28 DAYS TO BE 28 MPa w/ 5% TO 8% AIR ENTRAINMENT.
 - B) REINFORCING STEEL TO BE DEFORMED TYPE $f_y = 400$ MPa
 - C) UNIT FILL SHALL BE CLEAN COURSE GRANULAR MATERIAL. UNIT FILL SHALL FILL CAVITIES WITHIN AND BETWEEN THE UNITS
 - D) STONE STRING (S.S.) BLOCKS AS SHOWN IN SECTION DETAILS.
 - ALL WORK TO BE CONDUCTED IN ACCORDANCE WITH THE ONTARIO BUILDING CODE (2012).
 - ALL CONCRETE WORK TO BE CONDUCTED IN ACCORDANCE WITH CSA A23.3-19.
 - SOIL BEARING TO BE 90kPa AS PER GEOTECHNICAL REPORT DATED MAR. 11, 2021 BY LRL ASSOCIATES LTD.
 - SITE REVIEW OF STRUCTURAL ITEMS, AS NOTED ON THESE DRAWINGS, SHALL BE COORDINATED WITH LAMPKIN STRUCTURAL SERVICES LTD. THROUGH THE DURATION OF THE PROJECT.
 - PROVIDE 75mm CONCRETE COVER FOR REBAR
 - min. LAP LENGTH TO BE 800mm FOR 15M & 500mm FOR 10M.

REVISION	MAY 17, 2021
REVISED FOR SITE PLAN CONTROL APPROVAL APPLICATION	MARCH 11, 2021
ISSUE FOR PERMIT	MAY 27, 2020
REVISION	DATE

LAMPKIN
Structural Services Ltd.
34 - 5330 CANOTEK ROAD
OTTAWA, ONTARIO K1J 9C4
PHONE: (613) 745-6437

CLIENT: NIVO DEVELOPMENTS INC.

PROJECT: 1164-1166 HIGCROFT DRIVE

OTTAWA ONTARIO

TITLE: NEW RETAINING WALL

PROJECT # 20-14289 | DRAWN BY R.L. | DRAWN BY R.H.

DATE: 17/05/2021 | SCALE: AS NOTED | DRAWING # SK3 | REV#1

