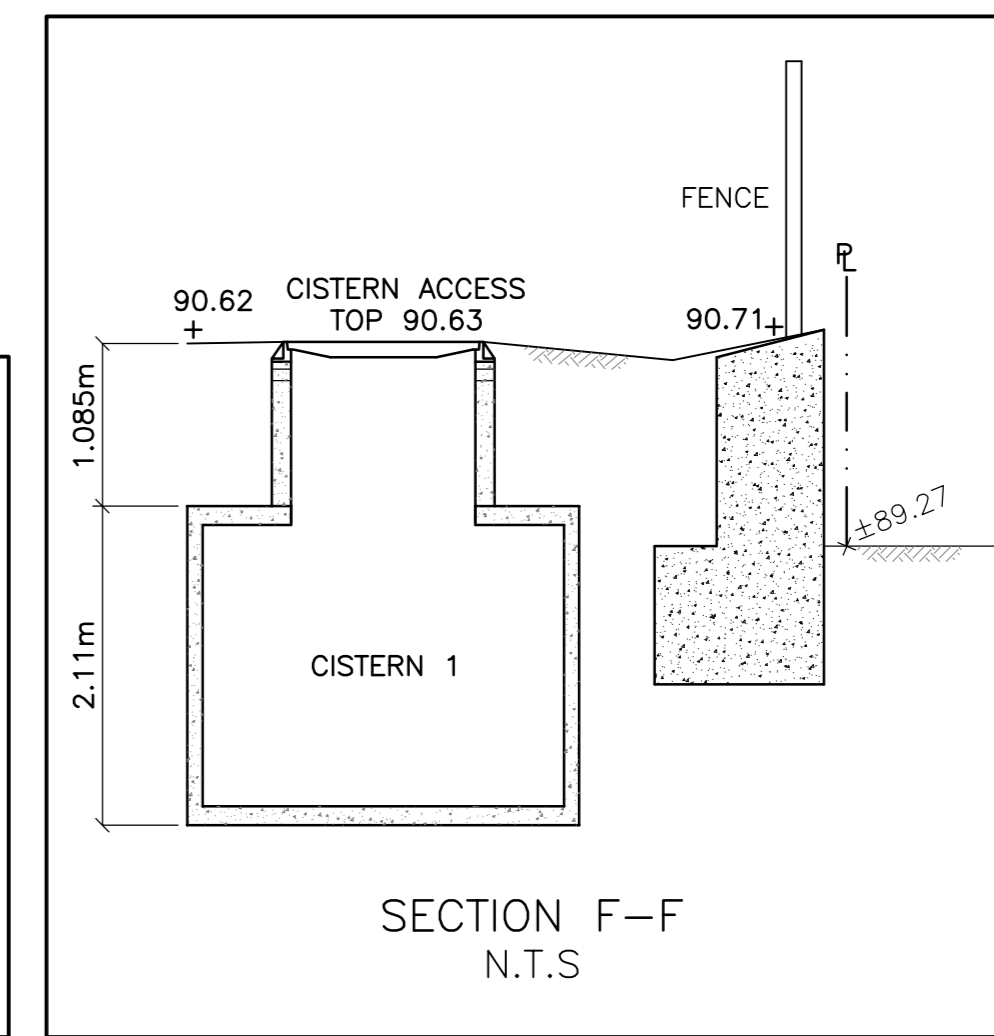
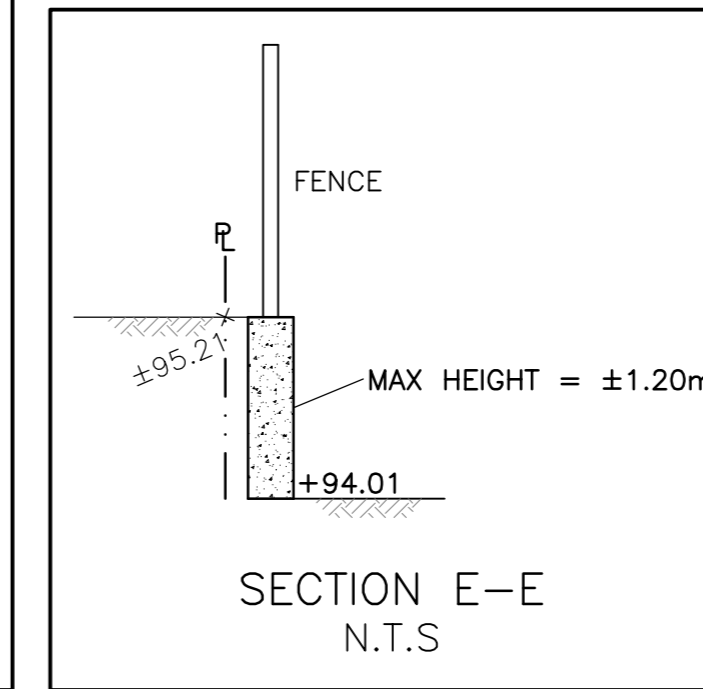
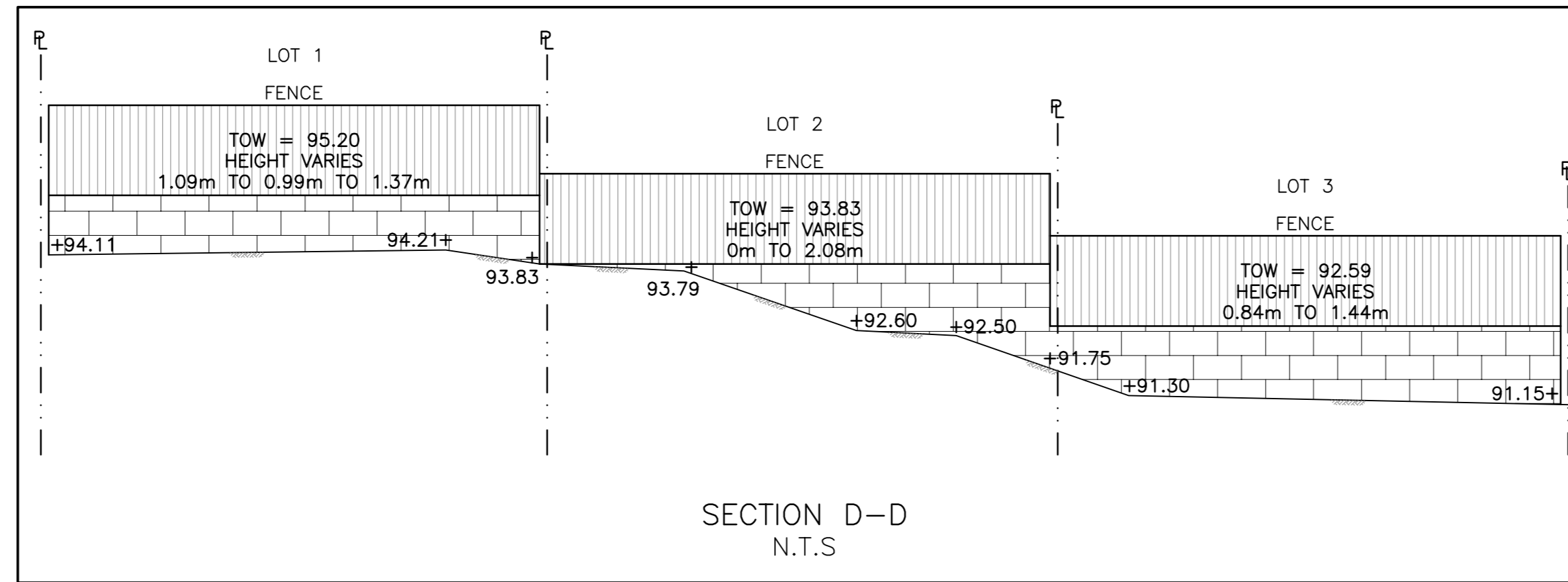
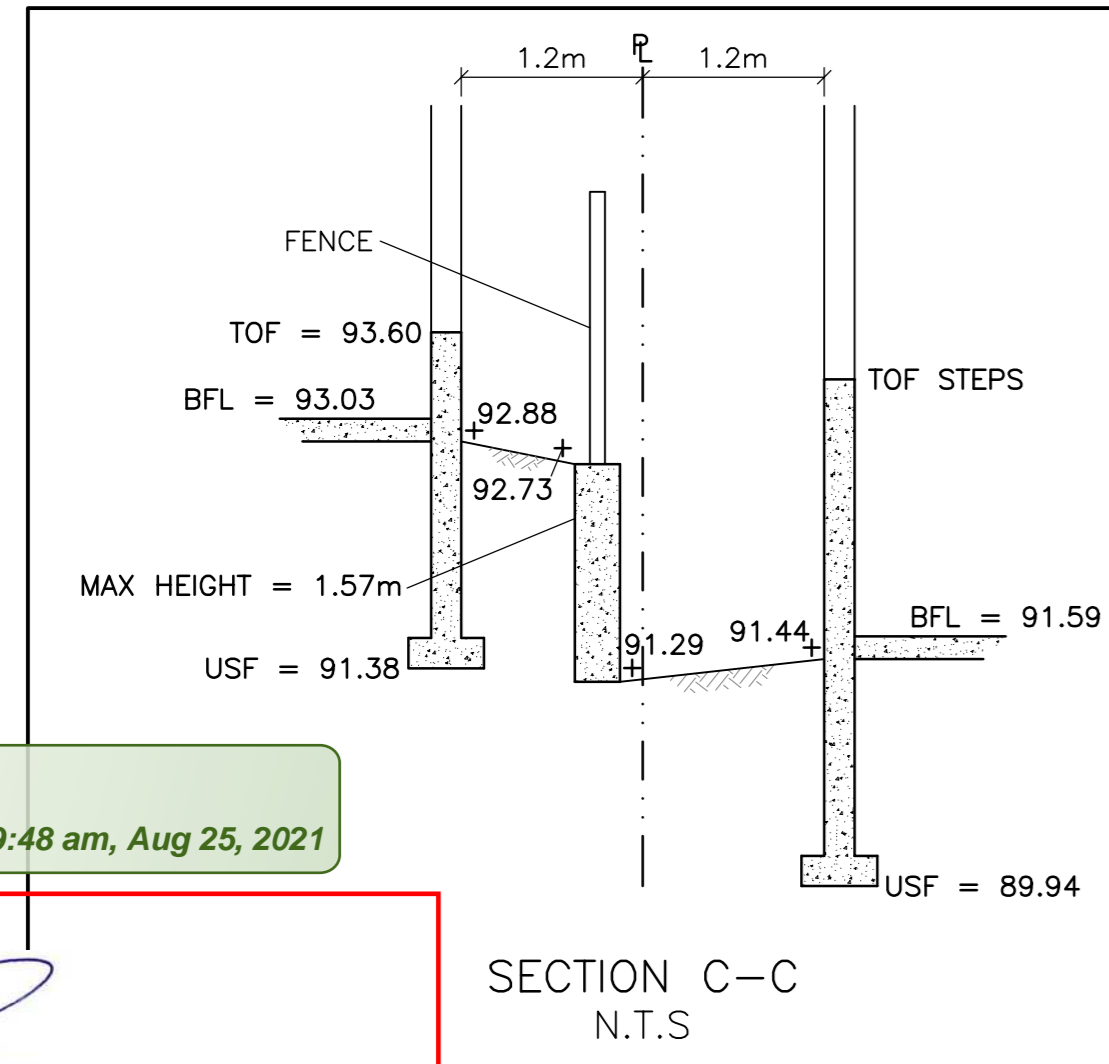


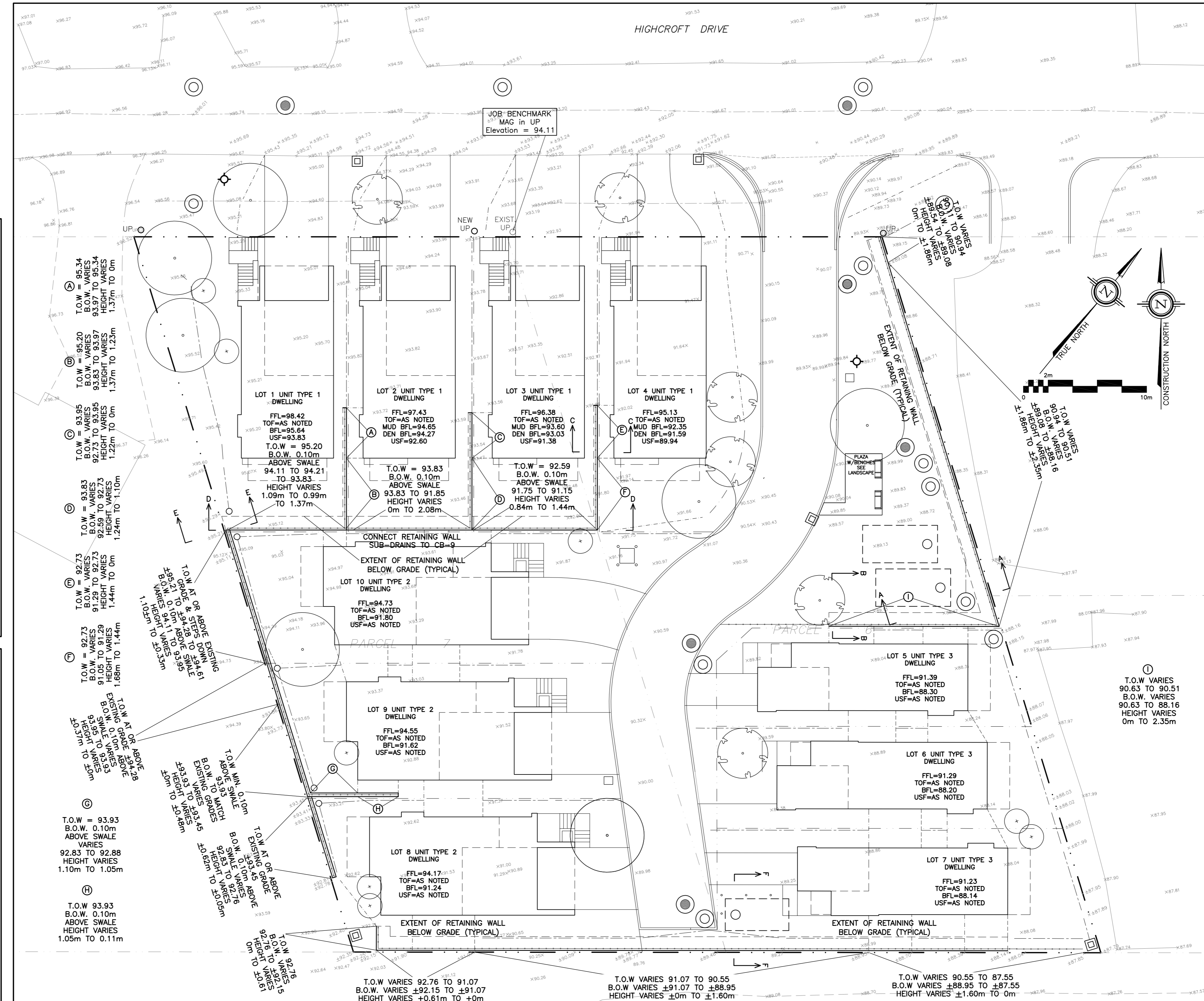
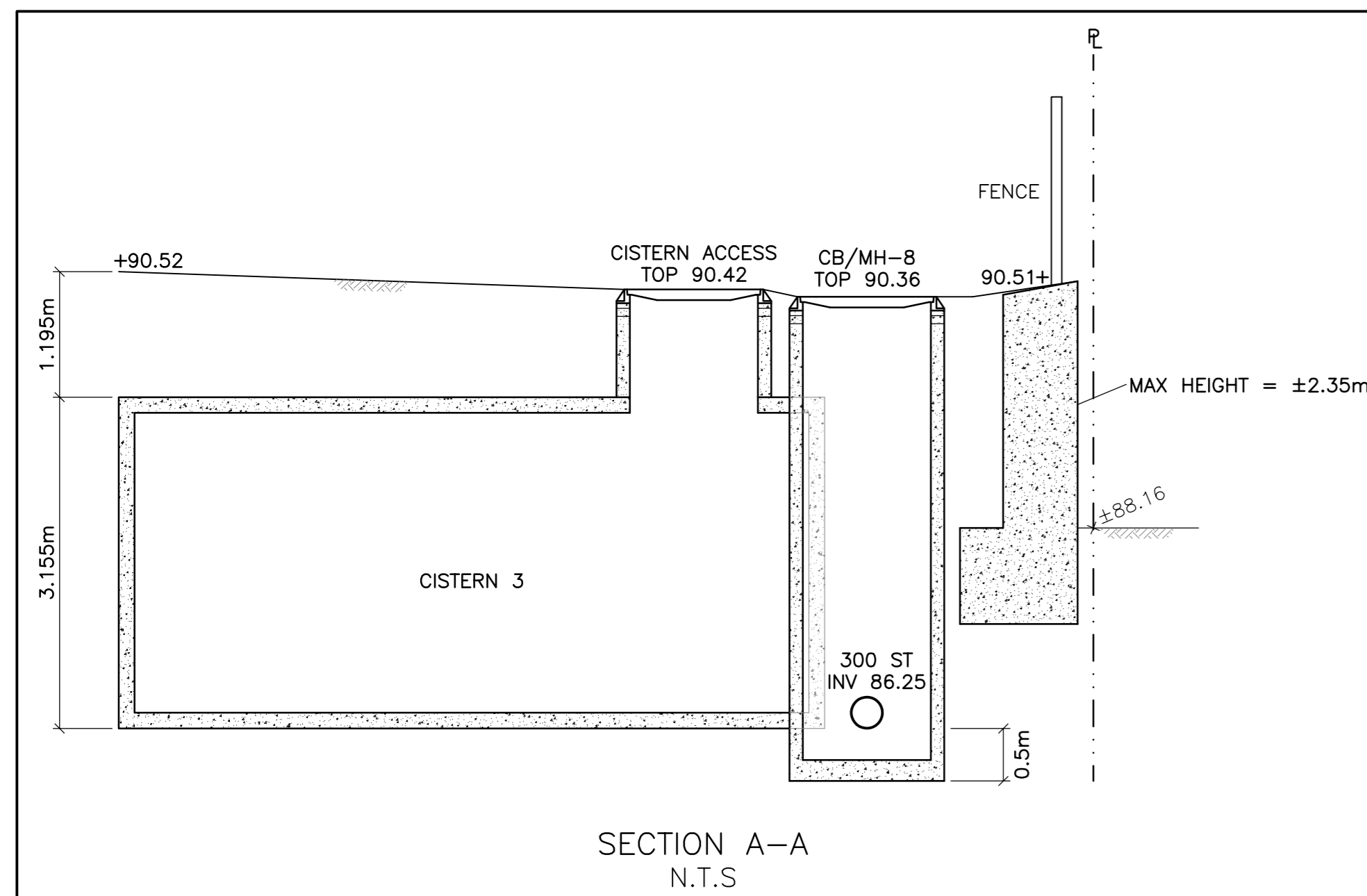
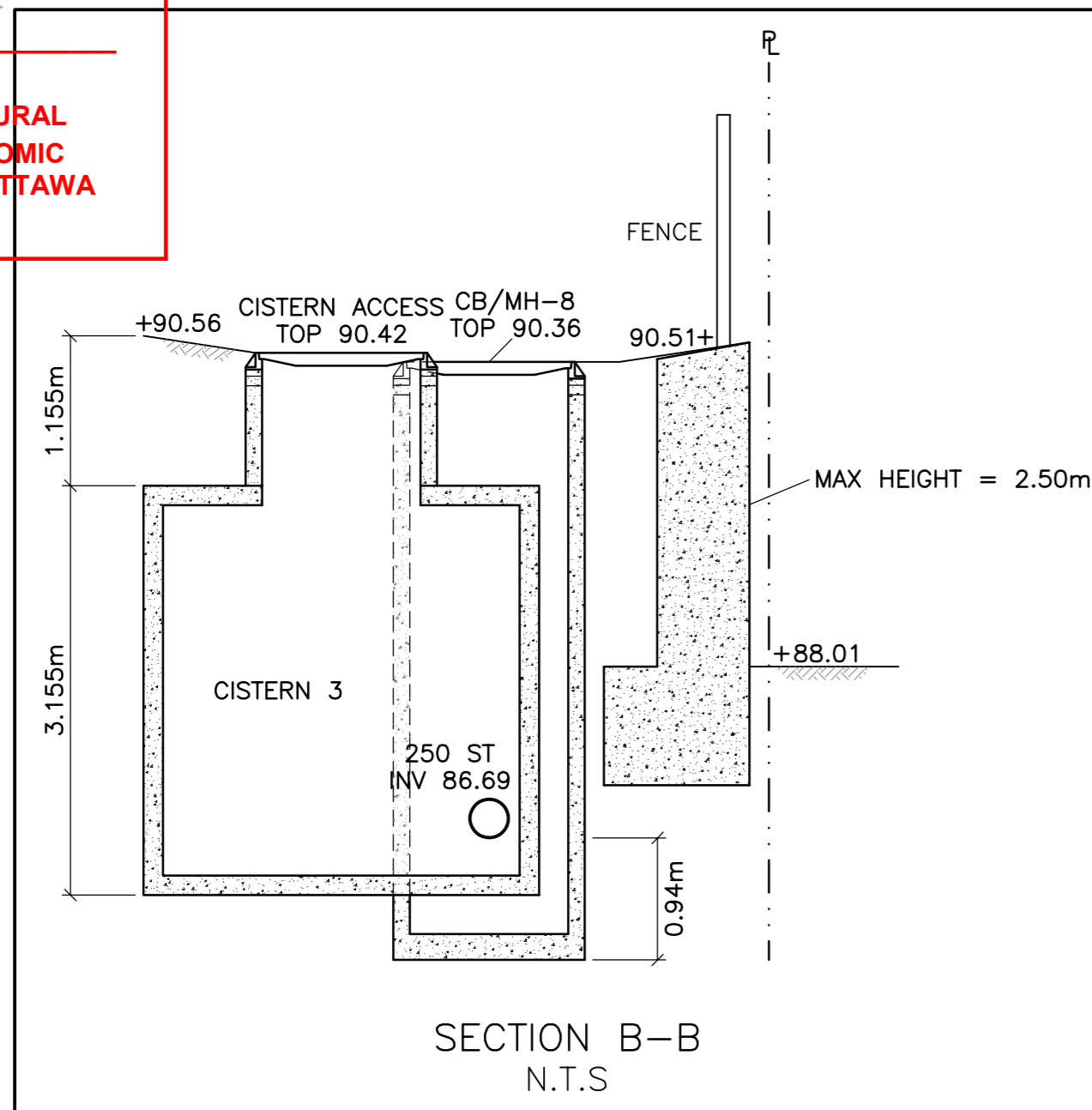
OWNER:
 NIVO DEVELOPMENTS INC.
 255 MICHAEL COWPLAND DRIVE
 OTTAWA, ONTARIO, K2M 0M5
 613-224-6200



APPROVED
 By Adam Brown at 9:48 am, Aug 25, 2021

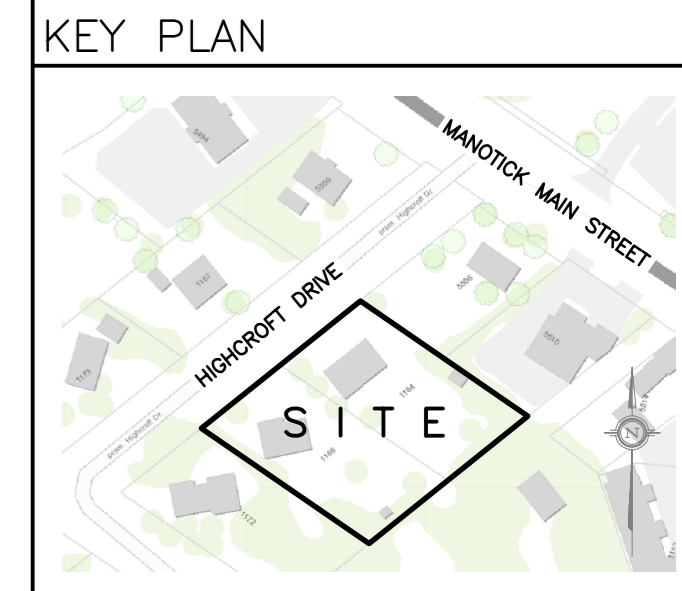
AR

ADAM BROWN
 MANAGER, DEVELOPMENT REVIEW - RURAL
 PLANNING, INFRASTRUCTURE & ECONOMIC
 DEVELOPMENT DEPARTMENT, CITY OF OTTAWA



DRAWING LEGEND

- CB [] CATCH BASIN
- MH () MANHOLE
- CB/MH () CATCH BASIN/MANHOLE
- MH () SANITARY MANHOLE
- ± 67.89 EXISTING GRADE ELEVATION
- + 67.89 PROPOSED GRADE ELEVATION
- 2% EXISTING SLOPE OF GRADE
- 2% PROPOSED SLOPE OF GRADE
- T.O.S TOP OF SLOPE
- B.O.S BOTTOM OF SLOPE
- CENTERLINE OF SWALE
- PROPERTY LINE
- SILT FENCE BARRIER
- D.C 150mm CURB/DEPRESSED CURB
- /// LIGHT-DUTY PAVEMENT
- /// HEAVY-DUTY PAVEMENT
- CONCRETE
- LANDSCAPE
- F.F.L FIRST FLOOR ELEVATION
- T.O.F TOP OF FOUNDATION
- B.F.L BASEMENT FLOOR ELEVATION
- U.S.F UNDERSIDE OF FOOTING



No.	DATE	REVISION
8	MAY 20-21	RE-ISSUED FOR APPROVAL
7	MAR 15-21	RE-ISSUED FOR APPROVAL
6	NOV 16-20	RE-ISSUED FOR APPROVAL
5	JUN 18-20	RE-ISSUED FOR APPROVAL
4	MAY 6-20	ISSUED FOR COORDINATION
3	SEP 27-19	RE-ISSUED FOR APPROVAL
2	AUG 9-19	ISSUED FOR APPROVAL
1	JUN 14-19	PRELIMINARY

D. B. GRAY ENGINEERING INC.
 Stormwater Management - Grading & Drainage - Storm & Sanitary Sewers - Watermain
 700 Long Point Circle 613-425-8044
 Ottawa, Ontario d.gray@dbgrayengineering.com

Project
**PROPOSED
 RESIDENTIAL DEVELOPMENT**
 1164-1166 HIGHCROFT DR.
 MANOTICK, ONTARIO

Drawing Title
RETAINING WALLS

Engineer's Seal

 NOT VALID UNLESS SIGNED & DATED

Drawn D.B.G.
 Hor. Scale 1:200
 Vert. Scale
 Date JUN 14-19
 Job No. 18035

Drawing No.
C-4
 of 14

REFER TO DRAWINGS SK1 TO SK3 BY
 LAMPKIN STRUCTURAL SERVICES LTD

CONNECT RETAINING WALL
 SUB-DRAINS TO A STORM
 MANHOLE OR CATCH BASIN

REFER TO NOTES & DETAILS
 ON DRAWINGS C-7 & C-8