

DRAWING LEGEND

- CB CATCH BASIN
- MH MANHOLE
- CB/MH CATCH BASIN/MANHOLE
- SPL SPRINGLINE OF PIPE
- INV INVERT OF PIPE
- SAN SANITARY SEWER
- ST STORM SEWER
- WS/WM WATER SERVICE/WATERMAIN
- CS CURB STOP & STANDPOST
- VB VALVE & VALVE BOX
- FH FIRE HYDRANT
- WM WATER METER
- RM REMOTE WATER METER READOUT
- EXIST EXISTING GRADE ELEVATION
- PROPERTY LINE
- FFL FIRST FLOOR ELEVATION
- TOP TOP OF FOUNDATION
- BFL BASEMENT FLOOR ELEVATION
- USF UNDERSIDE OF FOOTING

KEY PLAN

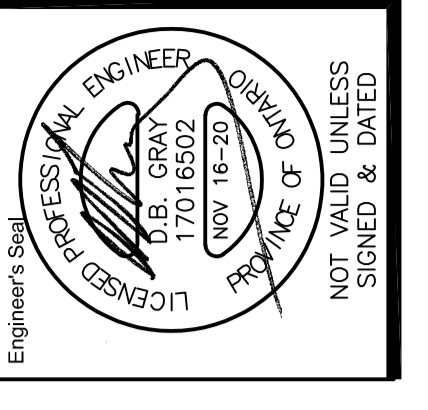


No.	DATE	REVISION
5	NOV 16-20	RE-ISSUED FOR APPROVAL
4	JUN 18-20	RE-ISSUED FOR APPROVAL
3	SEP 27-19	RE-ISSUED FOR APPROVAL
2	AUG 9-19	ISSUED FOR APPROVAL
1	JUN 14-19	PRELIMINARY

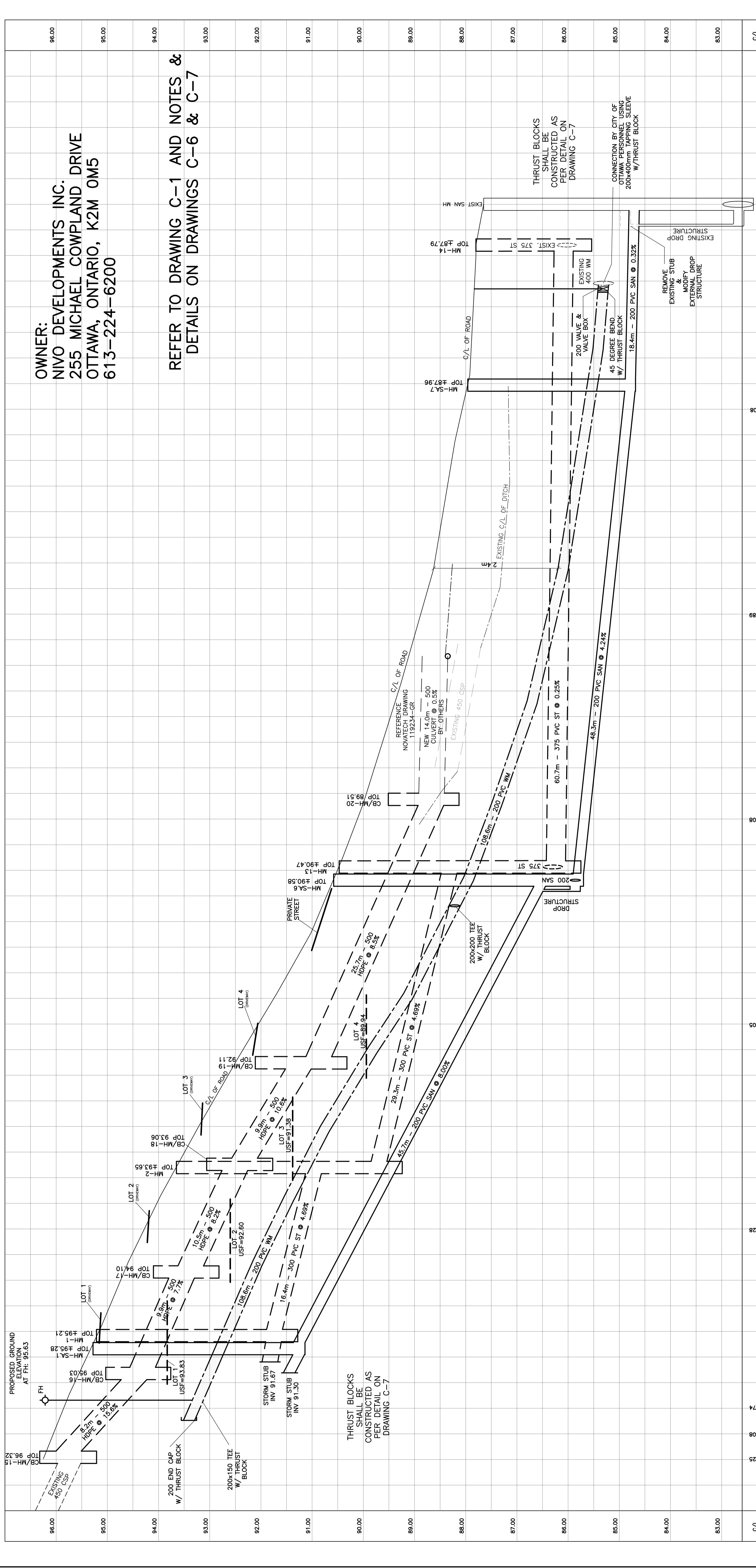
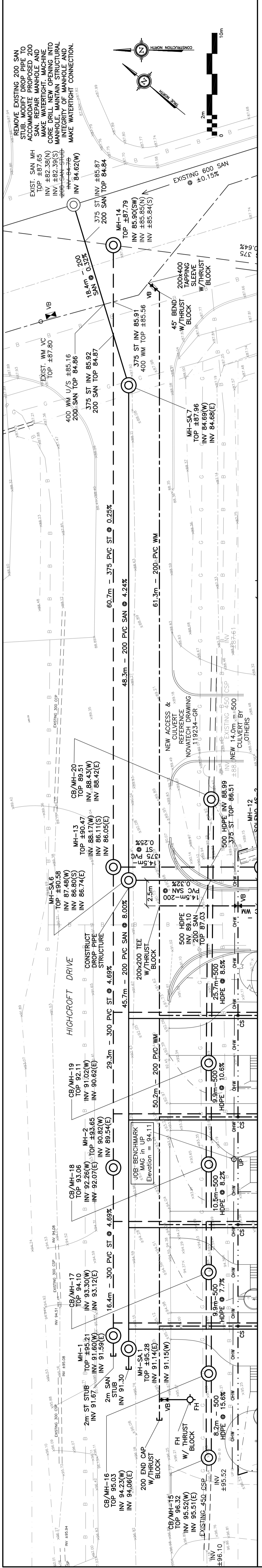
D. B. GRAY ENGINEERING INC.
 700 Long Point Circle
 Ottawa, Ontario
 613-425-8044
 dgray@dbgrayengineering.com

PROPOSED RESIDENTIAL DEVELOPMENT
 1164-1166 HIGHCROFT DR.
 MANOTICK, ONTARIO

PLAN & PROFILE HIGHCROFT DR



Drawn: D.B.G.
 Hor. Scale: 1:200
 Vert. Scale: 1:40
 Date: JUN 14-19
 Job No.: 180335
 Drawing No.: **C-9**
 of **11**



OWNER:
 NVO DEVELOPMENTS INC.
 255 MICHAEL COMPLAND DRIVE
 OTTAWA, ONTARIO, K2M 0M5
 613-224-6200

**REFER TO DRAWING C-1 AND NOTES & C-7
 DETAILS ON DRAWINGS C-6 & C-7**

Stationing	C/L of Road	Manhole/Structure	Structure Invert	Structure Top	Structure Bottom	Change from San MH
A+112.3	96.25	200 END CAP W/ THRUST BLOCK	95.52	95.52	95.52	
A+116.6	95.74	200x150 TEE W/ THRUST BLOCK	94.08	93.29	94.23	
A+117.7	92.95	200 SAN	91.14	92.95	91.14	
A+110	92.16	200x200 TEE W/ THRUST BLOCK	93.30	93.12	93.30	
A+100	94.28	200 SAN	91.54	92.07	92.28	
A+094	90.84	200 SAN	88.17	90.23	88.17	
A+083.7	90.84	200 SAN	88.17	90.23	88.17	
A+080	92.05	200 SAN	88.17	90.23	88.17	
A+070	89.22	200 SAN	86.80	88.05	86.80	
A+059.9	88.04	200 SAN	86.11	88.17	86.11	
A+050	88.81	200 SAN	86.11	88.17	86.11	
A+040	88.89	200 SAN	86.11	88.17	86.11	
A+030	88.08	200 SAN	84.58	86.21	84.58	
A+020	85.58	200 SAN	84.58	86.21	84.58	
A+010	85.41	200 SAN	84.58	86.21	84.58	
A+004	84.82	200 SAN	84.58	86.21	84.58	
A+000	84.82	200 SAN	84.58	86.21	84.58	