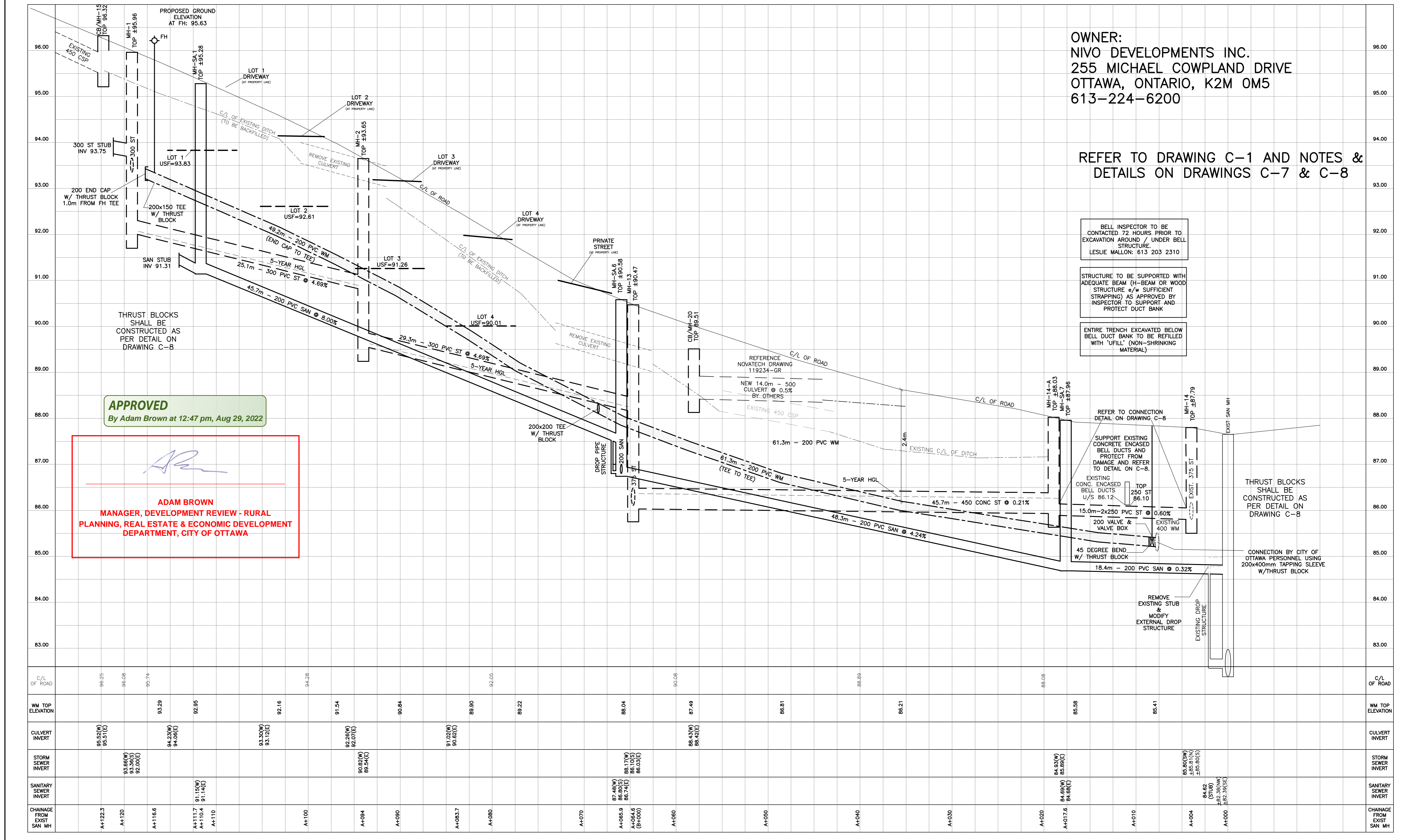


DRAWING LEGEND

- CB [Symbol] CATCH BASIN
- MH [Symbol] MANHOLE
- CB/MH [Symbol] CATCH BASIN/MANHOLE
- MH [Symbol] SANITARY MANHOLE
- SPL [Symbol] SPRINGLINE OF PIPE
- INV [Symbol] INVERT OF PIPE
- SAN [Symbol] SANITARY SEWER
- ST [Symbol] STORM SEWER
- WS/WM [Symbol] WATER SERVICE/WATERMAIN
- CS [Symbol] CURB STOP & STANDPOST
- VB [Symbol] VALVE & VALVE BOX
- FH [Symbol] FIRE HYDRANT
- M [Symbol] WATER METER
- Ⓡ [Symbol] REMOTE WATER METER READOUT
- [Symbol] EXISTING GRADE ELEVATION
- [Symbol] PROPERTY LINE
- FFL [Symbol] FIRST FLOOR ELEVATION
- TOF [Symbol] TOP OF FOUNDATION
- BFL [Symbol] BASEMENT FLOOR ELEVATION
- USF [Symbol] UNDERSIDE OF FOOTING



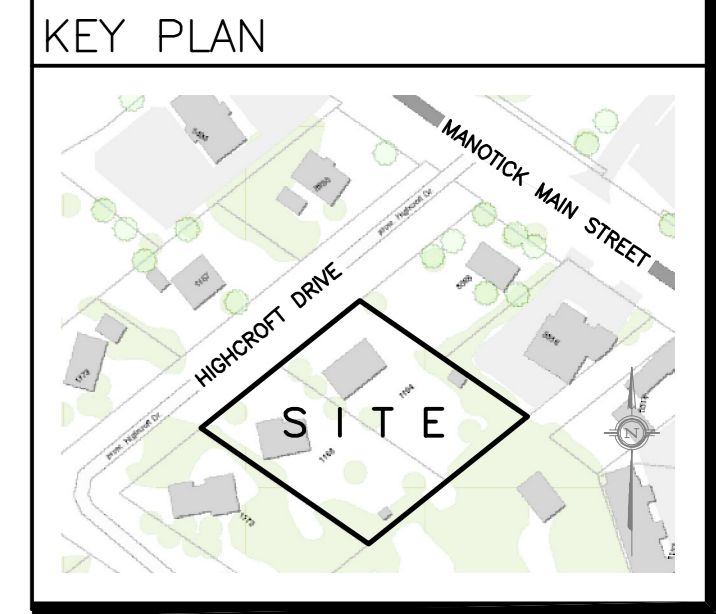
OWNER:
 NIVO DEVELOPMENTS INC.
 255 MICHAEL COWPLAND DRIVE
 OTTAWA, ONTARIO, K2M 0M5
 613-224-6200

REFER TO DRAWING C-1 AND NOTES & DETAILS ON DRAWINGS C-7 & C-8

- BELL INSPECTOR TO BE CONTACTED 72 HOURS PRIOR TO EXCAVATION AROUND / UNDER BELL STRUCTURE. LESLIE MALLON: 613 203 2310
- STRUCTURE TO BE SUPPORTED WITH ADEQUATE BEAM (H-BEAM OR WOOD STRUCTURE) e/w SUFFICIENT STRAPPING AS APPROVED BY INSPECTOR TO SUPPORT AND PROTECT DUCT BANK
- ENTIRE TRENCH EXCAVATED BELOW BELL DUCT BANK TO BE REFILLED WITH "UFFIL" (NON-SHRINKING MATERIAL)

APPROVED
 By Adam Brown at 12:47 pm, Aug 29, 2022

ADAM BROWN
 MANAGER, DEVELOPMENT REVIEW - RURAL
 PLANNING, REAL ESTATE & ECONOMIC DEVELOPMENT
 DEPARTMENT, CITY OF OTTAWA



No.	DATE	REVISION
10	AUG 17-22	REVISED STORM SEWER MH-14 TO MH-14A - RE-ISSUED FOR APPROVAL
9	AUG 11-22	REVISED STORM SEWER MH-14 TO MH-14A - RE-ISSUED FOR APPROVAL
8	AUG 8-21	REVISED STORM SEWER MH-14 TO MH-14A - RE-ISSUED FOR APPROVAL
7	MAY 20-21	RE-ISSUED FOR APPROVAL
6	MAR 15-21	RE-ISSUED FOR APPROVAL
5	NOV 16-20	RE-ISSUED FOR APPROVAL
4	JUN 18-20	RE-ISSUED FOR APPROVAL
3	SEP 27-19	RE-ISSUED FOR APPROVAL
2	AUG 9-19	ISSUED FOR APPROVAL
1	JUN 14-19	PRELIMINARY

D. B. GRAY ENGINEERING INC.
 Stormwater Management - Grading & Drainage - Storm & Sanitary Sewers - Watermain
 700 Long Point Circle 613-425-8044
 Ottawa, Ontario d.gray@dbgrayengineering.com

Project
PROPOSED RESIDENTIAL DEVELOPMENT
 1164-1166 HIGHCROFT DR.
 MANOTICK, ONTARIO

Drawing Title
PLAN & PROFILE HIGHCROFT DR

Engineer's Seal

 Drawn D.B.G.
 Hor. Scale 1:200
 Vert. Scale 1:40
 Date JUN 14-19
 Job No. 18035
 Drawing No. **C-12**
 of 14

C/L OF ROAD	WM TOP ELEVATION	CULVERT INVERT	STORM SEWER INVERT	SANITARY SEWER INVERT	CHAINAGE FROM EXIST SAN MH	C/L OF ROAD	WM TOP ELEVATION	CULVERT INVERT	STORM SEWER INVERT	SANITARY SEWER INVERT	CHAINAGE FROM EXIST SAN MH
96.25					A+122.3	96.08					A+120
95.74					A+118.6	93.29	95.51(E)	93.29	93.30(S)	91.5(W)	A+110.4
94.28					A+110	92.85	94.06(E)	92.85	92.80(S)	91.4(E)	A+110
92.16					A+100	92.16	93.20(W)	92.16	92.10(S)		A+100
91.54					A+094	91.54	92.26(W)	91.54	91.50(S)		A+094
90.84					A+090	90.84	92.07(E)	90.84	90.80(S)		A+090
89.90					A+083.7	89.90	91.02(W)	89.90	89.90(S)		A+083.7
89.22					A+080	89.22	90.62(E)	89.22	89.20(S)		A+080
88.04					A+070	88.04	90.26(W)	88.04	88.00(S)		A+070
87.49					A+065.9	87.49	88.17(W)	87.49	87.40(S)		A+065.9
86.81					A+060	86.81	88.74(E)	86.81	86.80(S)		A+060
86.21					A+050	86.21	88.43(W)	86.21	86.20(S)		A+050
85.58					A+040	85.58	88.42(E)	85.58	85.50(S)		A+040
85.41					A+030	85.41	88.43(W)	85.41	85.40(S)		A+030
85.00					A+020	85.00	88.42(E)	85.00	85.00(S)		A+020
84.00					A+017.6	84.00	86.12	84.00	84.00(S)		A+017.6
83.00					A+010	83.00	86.10	83.00	83.00(S)		A+010
82.00					A+004	82.00	85.81(N)	82.00	82.00(S)		A+004
81.00					A+000	81.00	84.68(E)	81.00	81.00(S)		A+000