

OWNER:
 NIVO DEVELOPMENTS INC.
 255 MICHAEL COMPLAND DRIVE
 OTTAWA, ONTARIO, K2M 0M5
 613-224-6200

REFER TO DRAWING C-1 AND NOTES &
 DETAILS ON DRAWINGS C-6 & C-7

DRAWING LEGEND

CB	CATCH BASIN
MH	MANHOLE
CB/MH	CATCH BASIN/MANHOLE
SPL	SPRINGLINE OF PIPE
INV	INVERT OF PIPE
SAN	SANITARY SEWER
ST	STORM SEWER
WS/WM	WATER SERVICE/WATERMAIN
CS	CURB STOP & STANDPOST
VB	VALVE & VALVE BOX
FH	FIRE HYDRANT
W	WATER METER
⊕	REMOTE WATER METER READOUT
⊕	EXISTING GRADE ELEVATION
---	PROPERTY LINE
---	FIRST FLOOR ELEVATION
---	TOP OF FOUNDATION
---	BASEMENT FLOOR ELEVATION
---	UNDERSIDE OF FOOTING

KEY PLAN



No.	DATE	REVISION
5	NOV 16-20	RE-ISSUED FOR APPROVAL
4	JUN 18-20	RE-ISSUED FOR APPROVAL
3	SEP 27-19	RE-ISSUED FOR APPROVAL
2	AUG 9-19	ISSUED FOR APPROVAL
1	JUN 14-19	PRELIMINARY

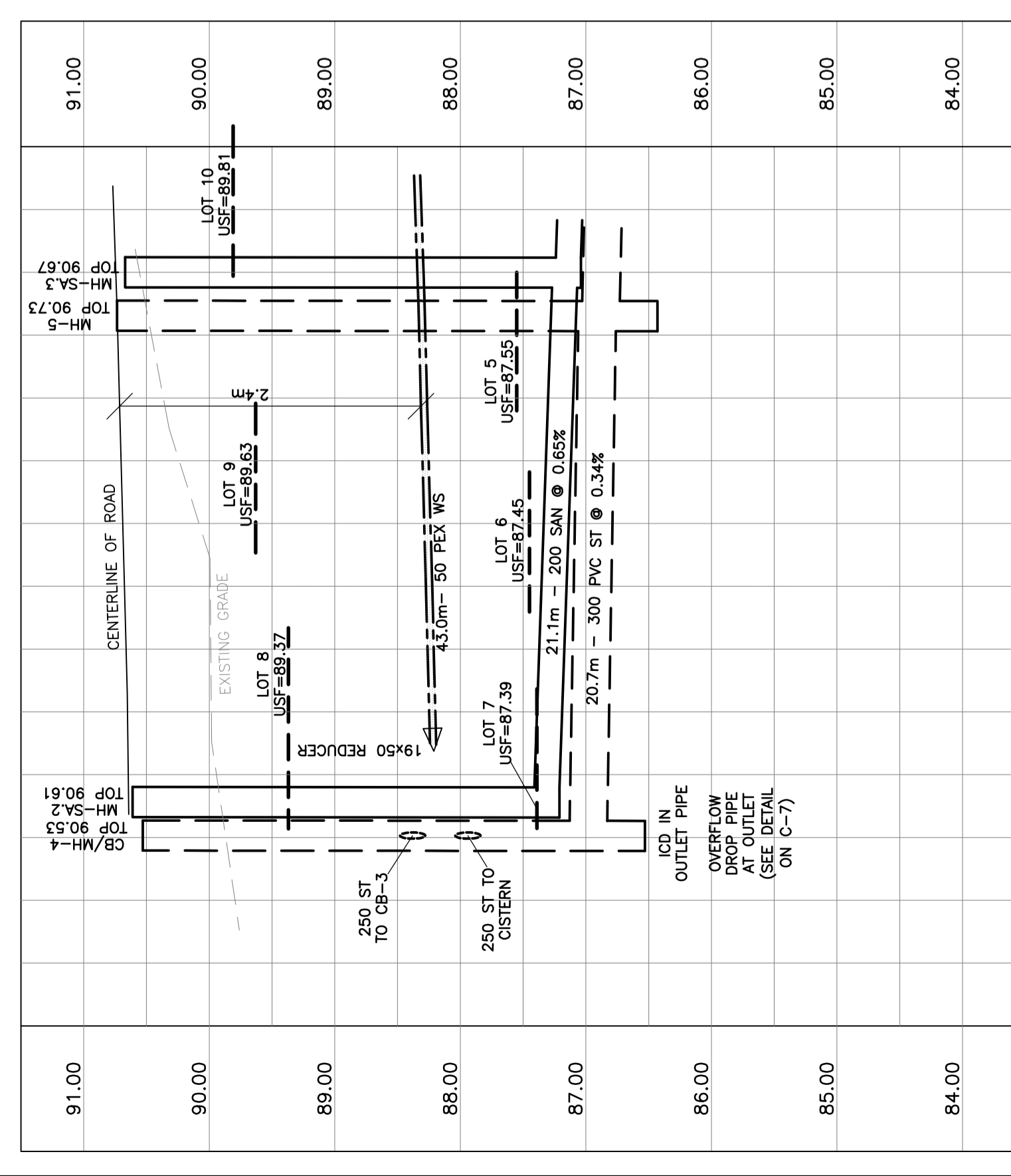
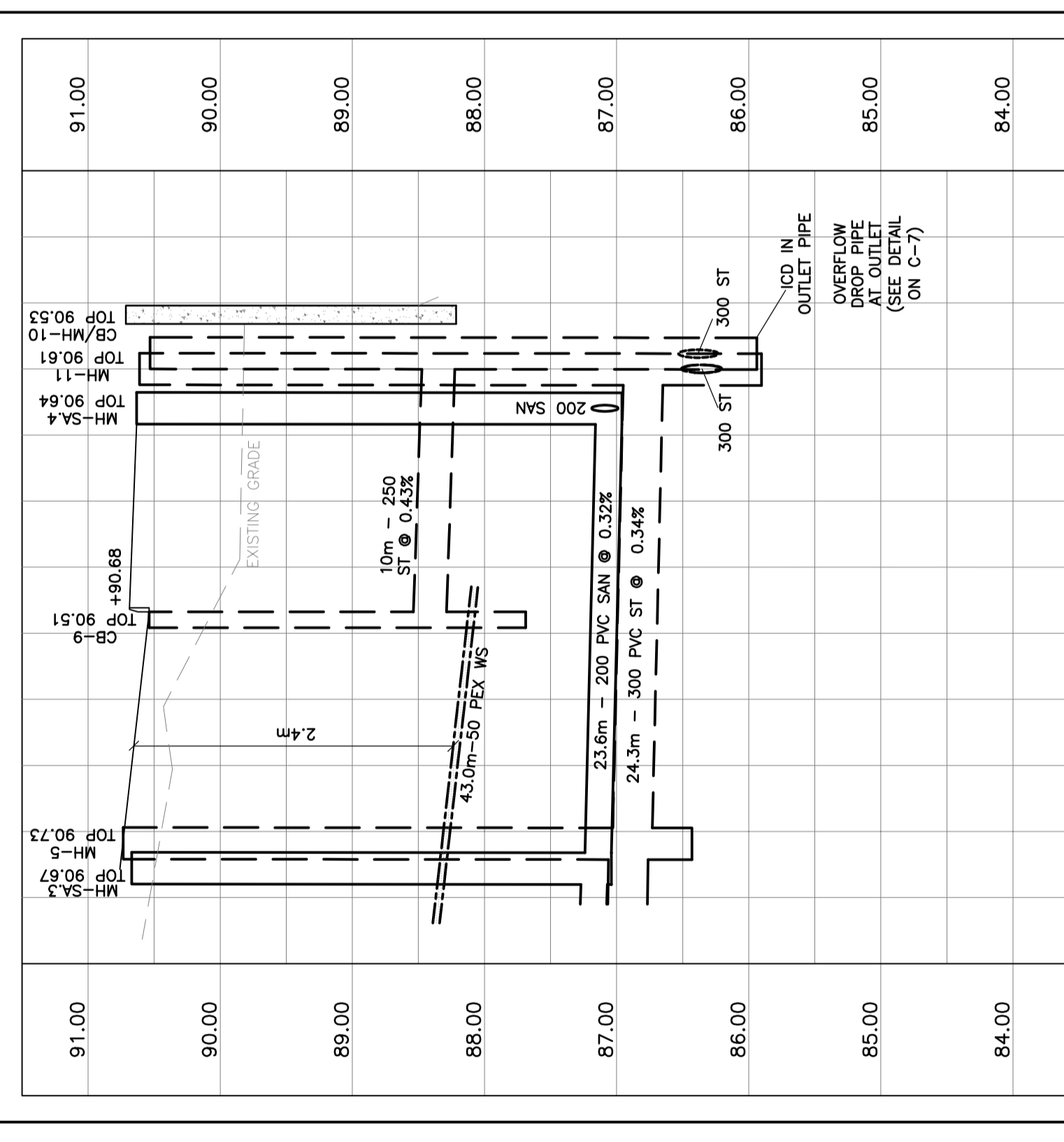
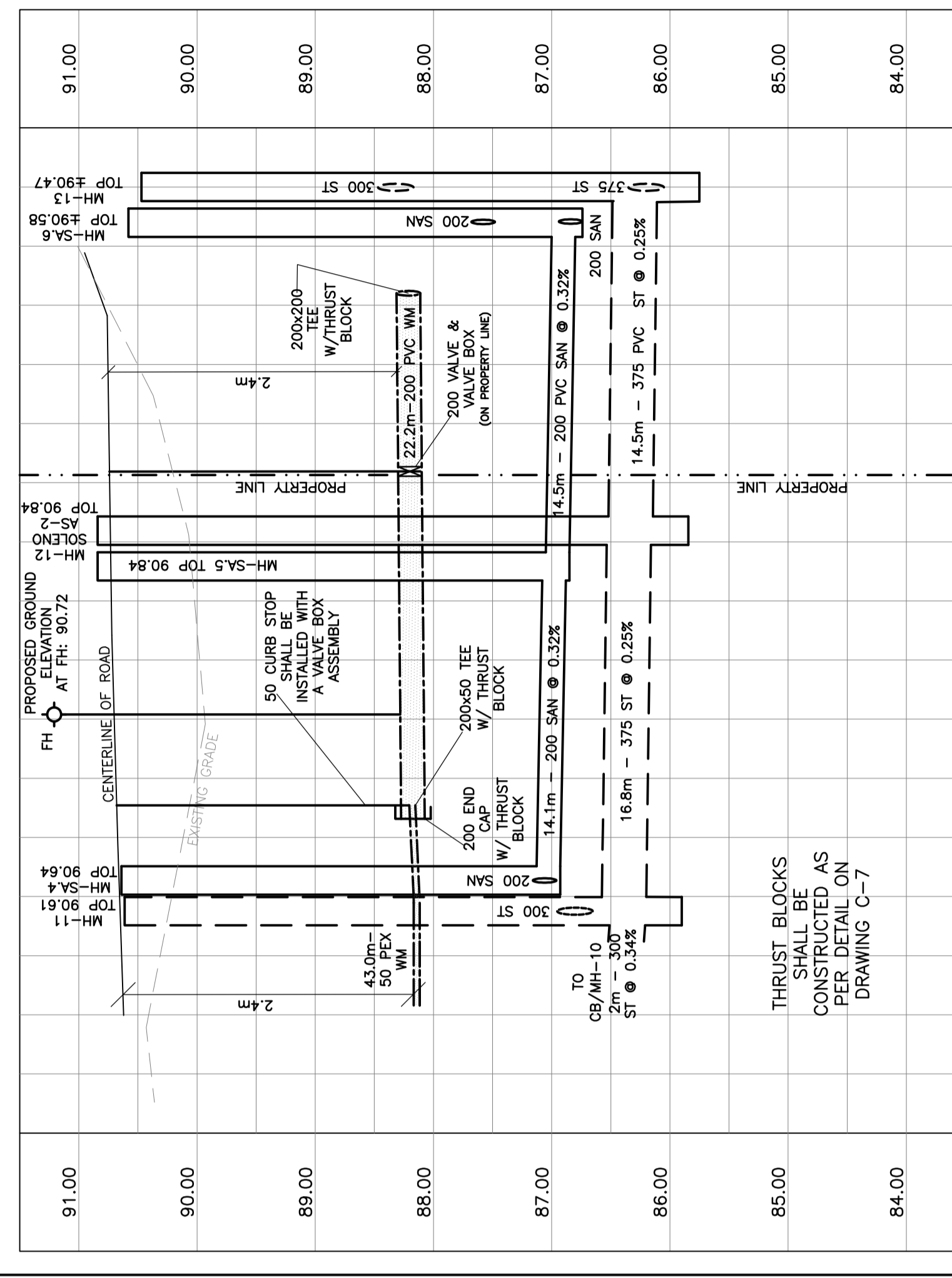
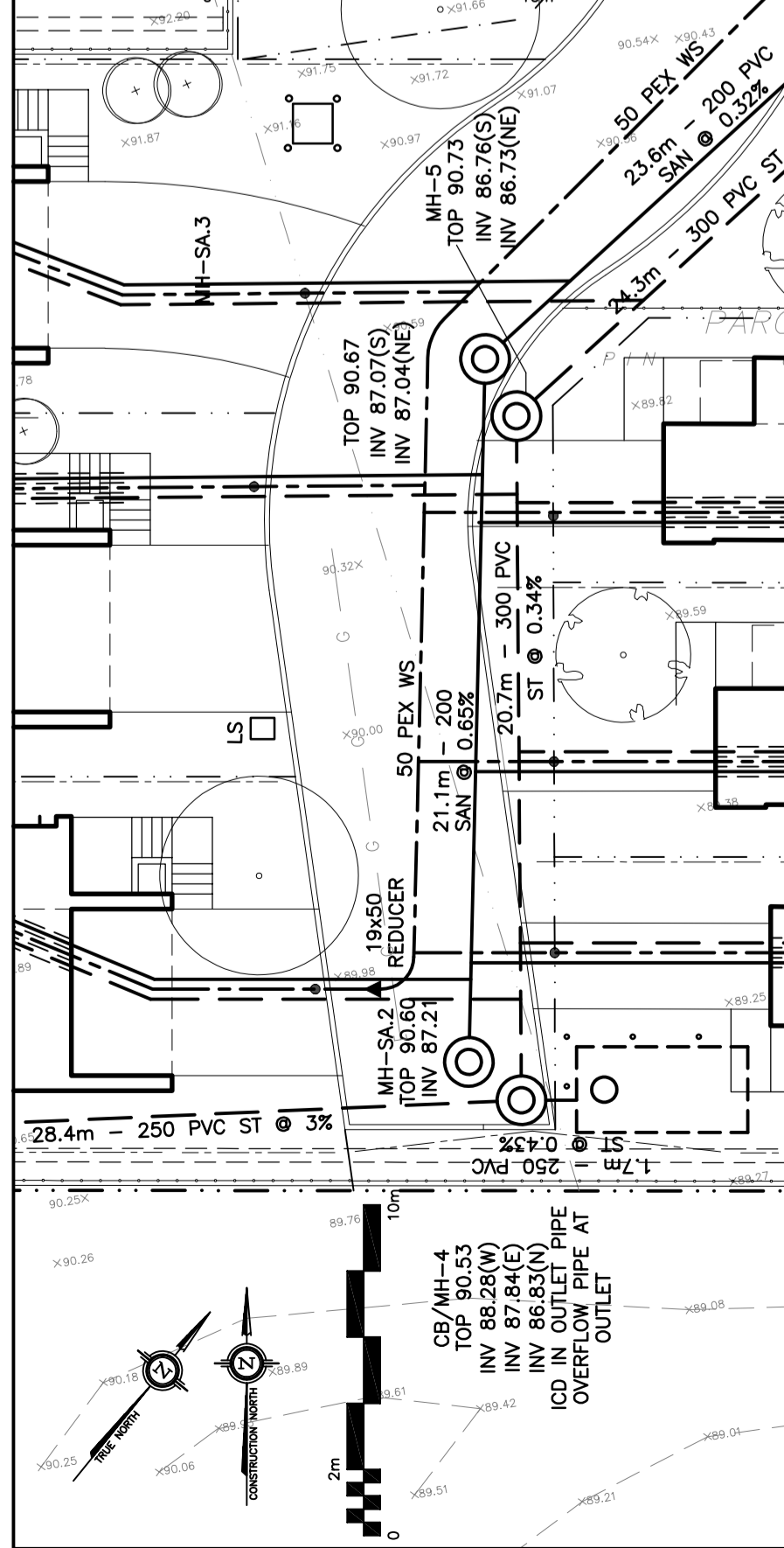
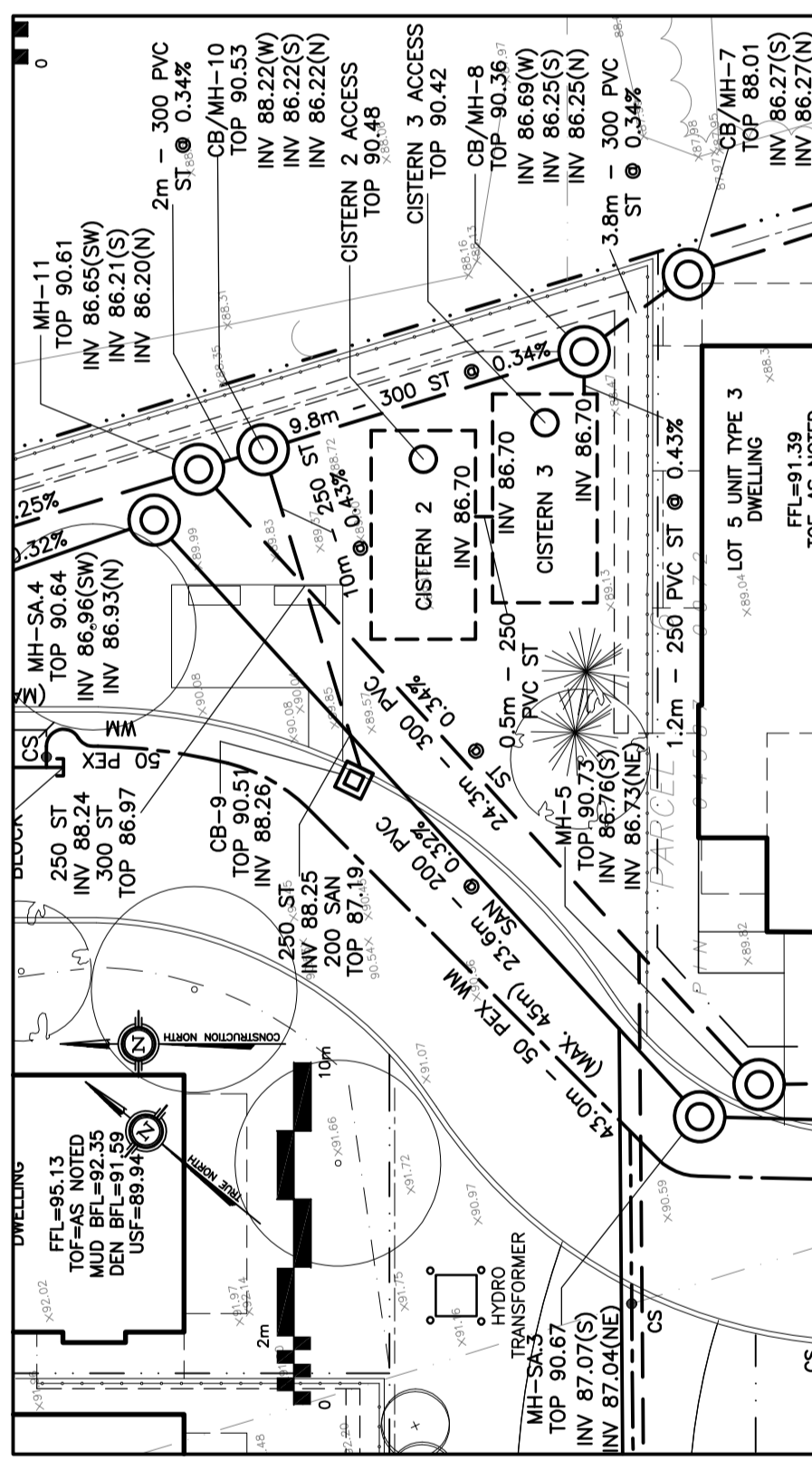
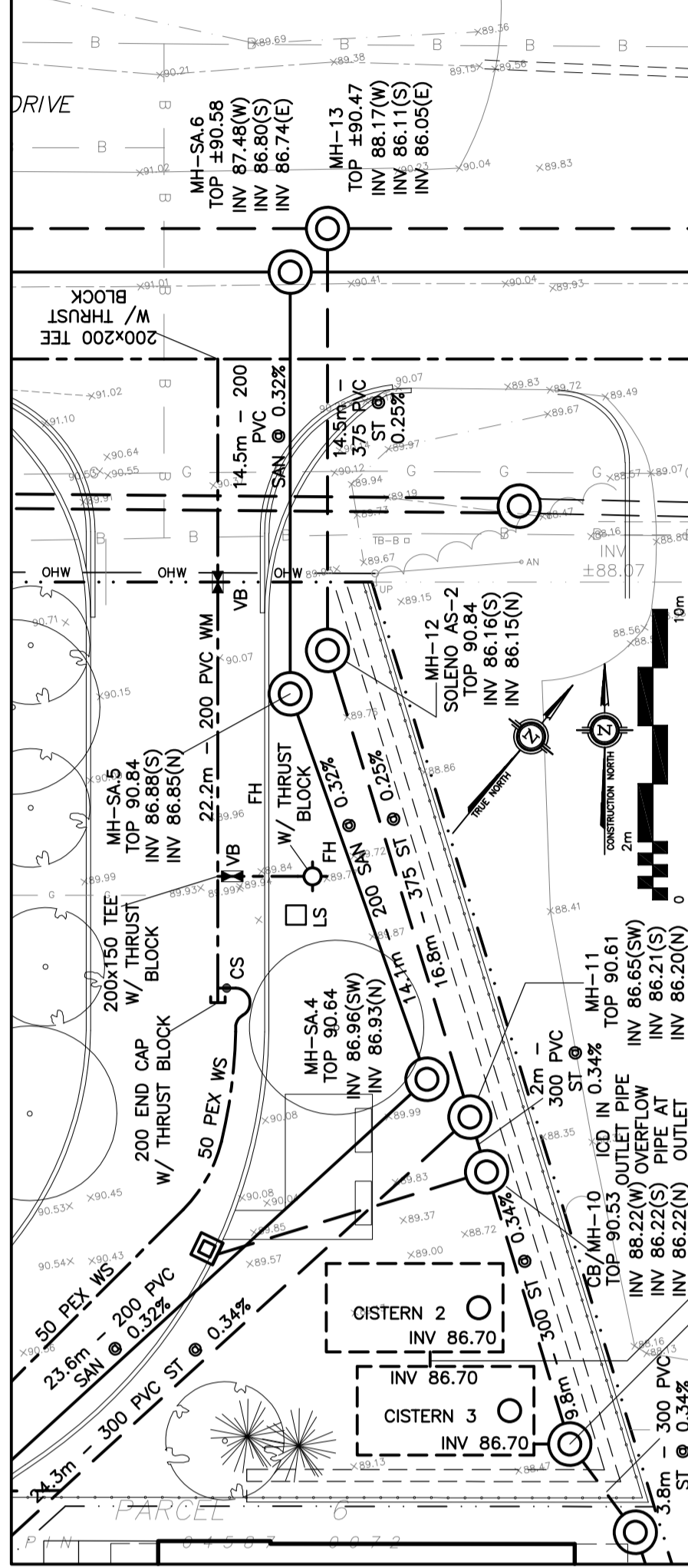
D. B. GRAY ENGINEERING INC.
 Surveying Management - Civil/Utility & Sanitary Sewers - Estimators
 700 Long Point Circle
 Ottawa, Ontario
 613-425-8044
 dgray@dbgrayengineering.com

Project
**PROPOSED
 RESIDENTIAL DEVELOPMENT
 1164-1166 HIGHCROFT DR.**
 MANOTICK, ONTARIO

Drawing Title
**PLAN & PROFILE
 PRIVATE ROAD**

Engineer's Seal

 Drawing No. **C-10**
 of **11**
 NOT VALID UNLESS
 SIGNED & DATED



STATION FROM MH 1.3	STATION TO MH 1.3	ST INVERT	TOP OF WM	C/L OF ROAD
B+00.5	B+00.5	INV 86.17(W) INV 86.11(S) INV 86.05(E)	88.31	90.76
B+01.5	B+01.5	INV 87.48(W) INV 86.11(S) INV 86.05(E)	88.31	90.72
B+01.4	B+01.4	INV 86.16(S)	88.31	90.72
B+01.1	B+01.1	INV 86.89(S) INV 86.89(S)	88.31	90.72
B+02.0	B+02.0	INV 86.16(S)	88.31	90.72
B+02.3	B+02.3	INV 86.22(W) INV 86.22(S) INV 86.22(S) INV 86.22(S) INV 86.22(S) INV 86.22(S)	88.22	90.62
B+02.6	B+02.6	INV 86.65(SW) INV 86.65(SW) INV 86.65(SW) INV 86.65(SW) INV 86.65(SW)	88.22	90.62
B+03.0	B+03.0	INV 86.93(N) INV 86.93(N) INV 86.93(N)	88.22	90.62
B+03.6	B+03.6	INV 86.96(SW) INV 86.96(SW) INV 86.96(SW)	88.26	90.76
B+03.9	B+03.9	INV 87.07(S) INV 86.73(NE)	88.36	90.76
B+04.0	B+04.0	INV 86.76(S) INV 86.76(S) INV 86.76(S)	88.36	90.76
B+05.1	B+05.1	INV 86.76(S) INV 86.76(S) INV 86.76(S) INV 86.76(S) INV 86.76(S)	88.32	90.72
B+05.15	B+05.15	INV 86.76(S) INV 86.76(S) INV 86.76(S) INV 86.76(S) INV 86.76(S)	88.34	90.74
B+05.0	B+05.0	INV 87.07(S) INV 86.73(NE)	88.36	90.76
B+07.3	B+07.3	INV 88.28(W) INV 87.84(E) INV 86.93(N)	88.24	90.64
B+07.5	B+07.5	INV 87.21	88.24	90.64

STATION FROM MH 1.3	STATION TO MH 1.3	ST INVERT	TOP OF WM	C/L OF ROAD
B+03.9	B+03.9	INV 88.28(W) INV 87.84(E) INV 86.93(N)	88.24	90.64
B+07.5	B+07.5	INV 87.21	88.24	90.64
B+07.3	B+07.3	INV 88.28(W) INV 87.84(E) INV 86.93(N)	88.24	90.64
B+07.5	B+07.5	INV 87.21	88.24	90.64

STATION FROM CB/MH 4	STATION FROM MH 1.3	ST INVERT	TOP OF WM	C/L OF ROAD
B+07.3	B+07.3	INV 88.28(W) INV 87.84(E) INV 86.93(N)	88.24	90.64
B+07.5	B+07.5	INV 87.21	88.24	90.64
B+07.3	B+07.3	INV 88.28(W) INV 87.84(E) INV 86.93(N)	88.24	90.64
B+07.5	B+07.5	INV 87.21	88.24	90.64