

OWNER:
NIVO DEVELOPMENTS INC.
255 MICHAEL COMPLAND DRIVE
OTTAWA, ONTARIO, K2M 0M5
613-224-6200

THE EXISTING JOB BENCHMARK IS ON A UTILITY POLE THAT WILL BE RELOCATED. THE SURVEYOR SHALL ESTABLISH AN ALTERNATIVE JOB BENCHMARK PRIOR TO THE COMMENCEMENT OF CONSTRUCTION.

AN EXISTING TRANSFORMER AND STREET LIGHT ARE CONNECTED TO POLE TO BE REMOVED AND SHALL BE CONNECTED TO NEW POLE.

DRAWING LEGEND

- CB CATCH BASIN
- MH MANHOLE
- CB/MH CATCH BASIN/MANHOLE
- MH SANITARY MANHOLE
- SPL SPRINGLINE OF PIPE
- INV INVERT OF PIPE
- SAN SANITARY SEWER
- ST STORM SEWER
- WS/WM WATER SERVICE/WATERMAIN
- CS CURB STOP & STANDPOST
- VB VALVE & VALVE BOX
- FH FIRE HYDRANT
- WATER METER
- REMOVE WATER METER READOUT
- EXISTING GRADE ELEVATION
- PROPERTY LINE
- FFL FIRST FLOOR ELEVATION
- TOP TOP OF FOUNDATION
- BFL BASEMENT FLOOR ELEVATION
- USF UNDERSIDE OF FOOTING

KEY PLAN



No.	DATE	REVISION
9	MAY 31-21	RE-ISSUED FOR APPROVAL
8	MAY 20-21	RE-ISSUED FOR APPROVAL
7	MAR 15-21	RE-ISSUED FOR APPROVAL
6	NOV 16-20	RE-ISSUED FOR APPROVAL
5	JUN 18-20	RE-ISSUED FOR APPROVAL
4	MAY 5-20	ISSUED FOR COORDINATION
3	SEP 27-19	RE-ISSUED FOR APPROVAL
2	AUG 9-19	ISSUED FOR APPROVAL
1	JUN 14-19	PRELIMINARY

D. B. GRAY ENGINEERING INC.
Stormwater Management - Grading & Drainage - Sewer & Sanitary Sewers - Easements
 700 Long Point Circle
 Ottawa, Ontario
 4gray@dbgrayengineering.com
 613-425-8044

PROPOSED RESIDENTIAL DEVELOPMENT
1164-1166 HIGHCROFT DR.
 MANOTICK, ONTARIO

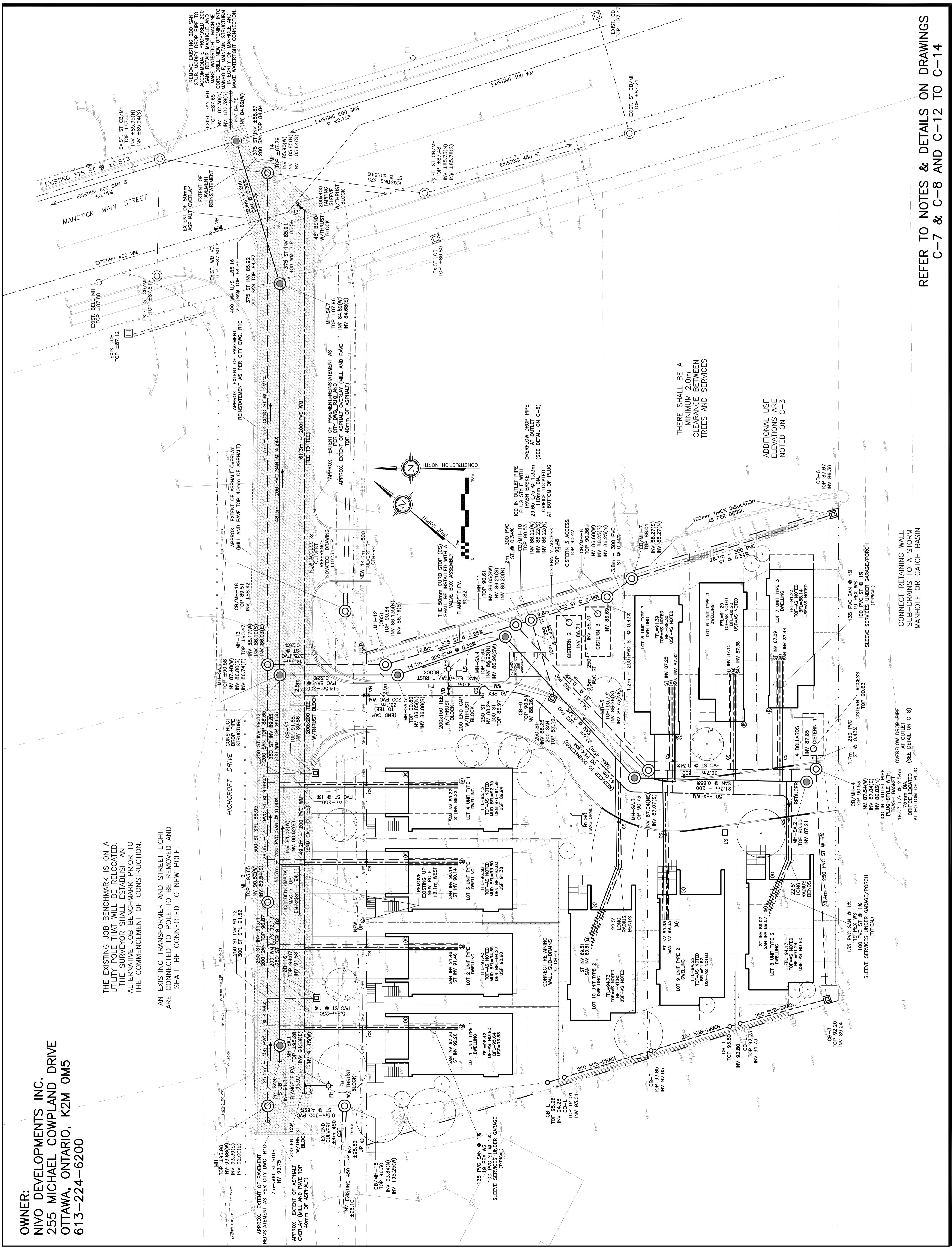
SITE SERVICING PLAN

Engineer's Seal: **D.B. GRAY ENGINEERING INC.**
 D.B. GRAY
 700 LONG POINT CIRCLE
 OTTAWA, ONTARIO
 K1N 8N7
 (613) 425-8044

Drawn: D.B.G.
 Hor. Scale: 1:200
 Vert. Scale:
 Date: JUN 14-19
 Job No.: 180335

Drawing No.: **C-1**
 of **14**

NOT VALID UNLESS SIGNED & DATED



THERE SHALL BE A MINIMUM 2.0m CLEARANCE BETWEEN TREES AND SERVICES

ADDITIONAL USE ELEVATIONS ARE NOTED ON C-3

CONNECT RETAINING WALL SUB-DRAINS TO A STORM MANHOLE OR CATCH BASIN

REFER TO NOTES & DETAILS ON DRAWINGS C-7 & C-8 AND C-12 TO C-14