

OWNER:
 NIVO DEVELOPMENTS INC.
 255 MICHAEL COMPLAND DRIVE
 OTTAWA, ONTARIO, K2M 0M5
 613-224-6200

REFER TO DRAWING C-1 AND NOTES &
 DETAILS ON DRAWINGS C-6 & C-7

DRAWING LEGEND

- CB CATCH BASIN
- MH MANHOLE
- CB/MH CATCH BASIN/MANHOLE
- SPL SPRINGLINE OF PIPE
- INV INVERT OF PIPE
- SAN SANITARY SEWER
- ST STORM SEWER
- WS/MM WATER SERVICE/WATERMAIN
- CS CURB STOP & STANDPOST
- VB VALVE & VALVE BOX
- FH FIRE HYDRANT
- WATER METER
- REMOTE WATER METER READOUT
- EXISTING GRADE ELEVATION
- PROPERTY LINE
- 150mm CURB/DEPRESSED CURB
- FFL FIRST FLOOR ELEVATION
- TOP OF FOUNDATION
- BFL BASEMENT FLOOR ELEVATION
- USF UNDERSIDE OF FOOTING

KEY PLAN

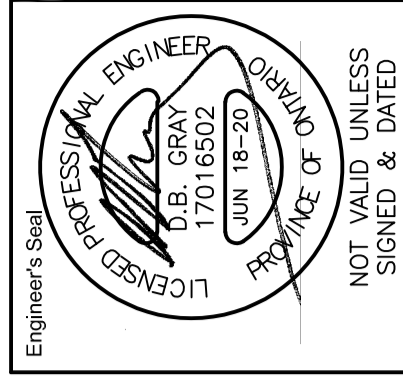


No.	DATE	REVISION
1	JUN 14-19	PRELIMINARY
2	AUG 9-19	ISSUED FOR APPROVAL
3	SEP 27-19	RE-ISSUED FOR APPROVAL
4	JUN 18-20	RE-ISSUED FOR APPROVAL

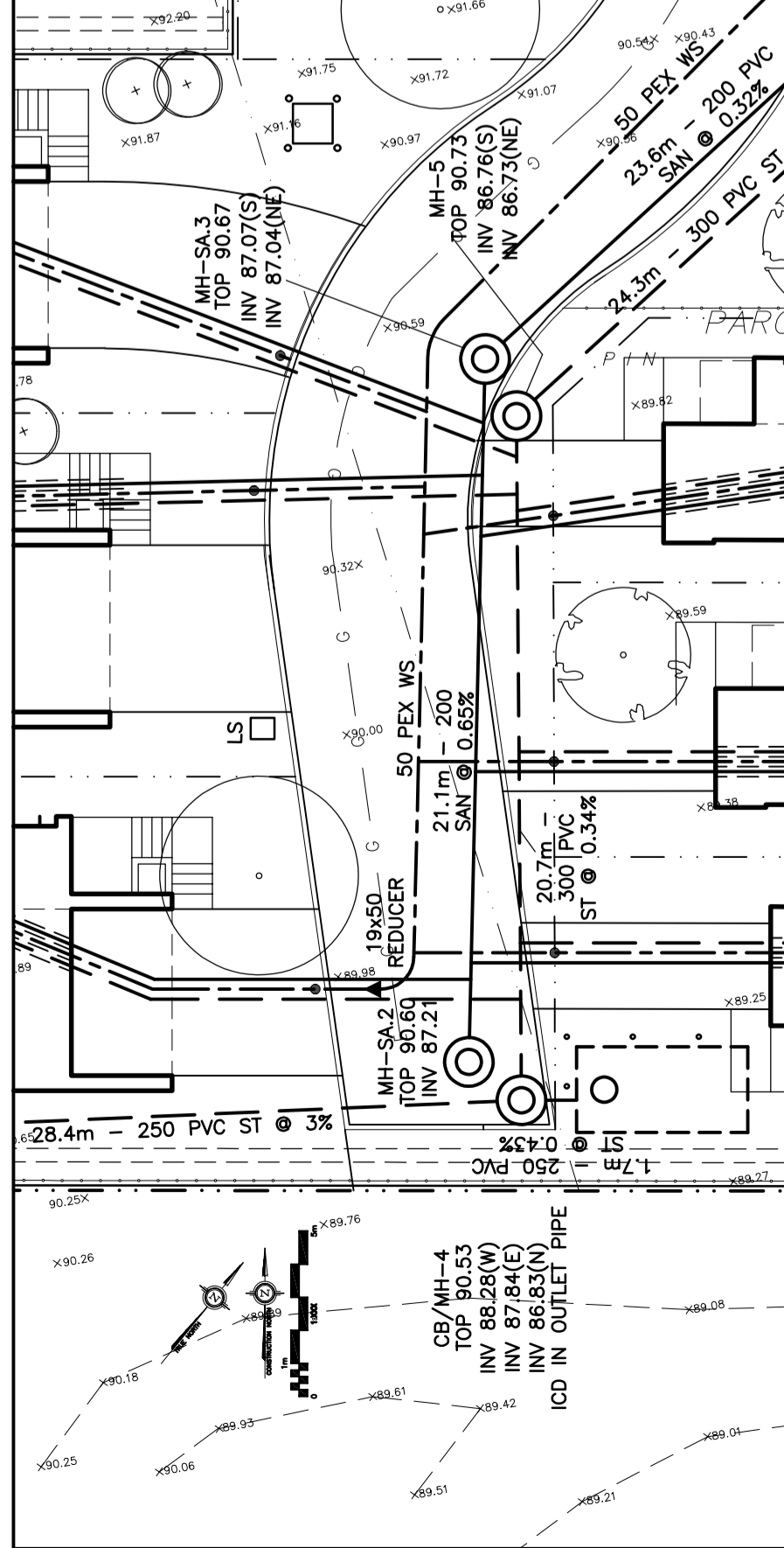
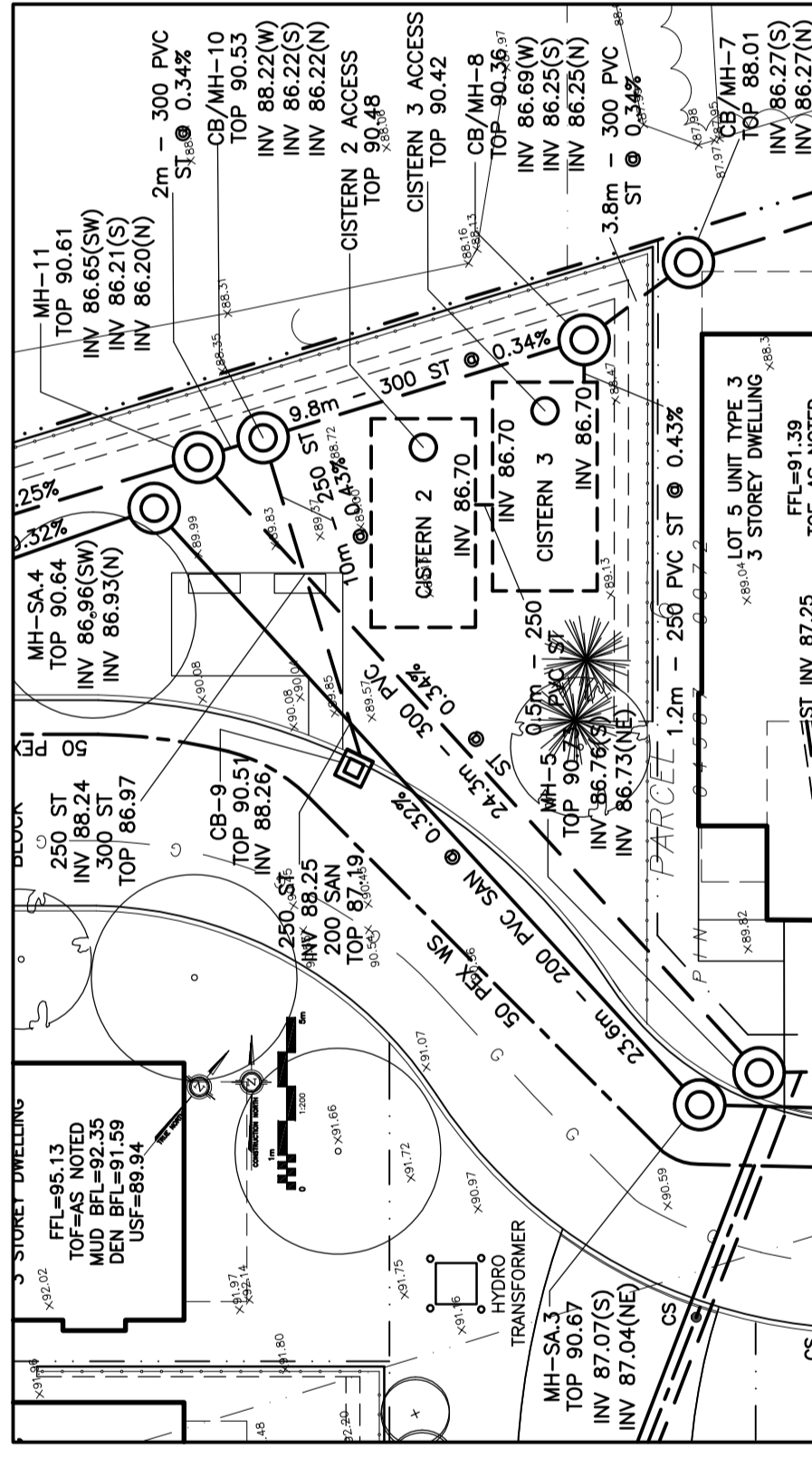
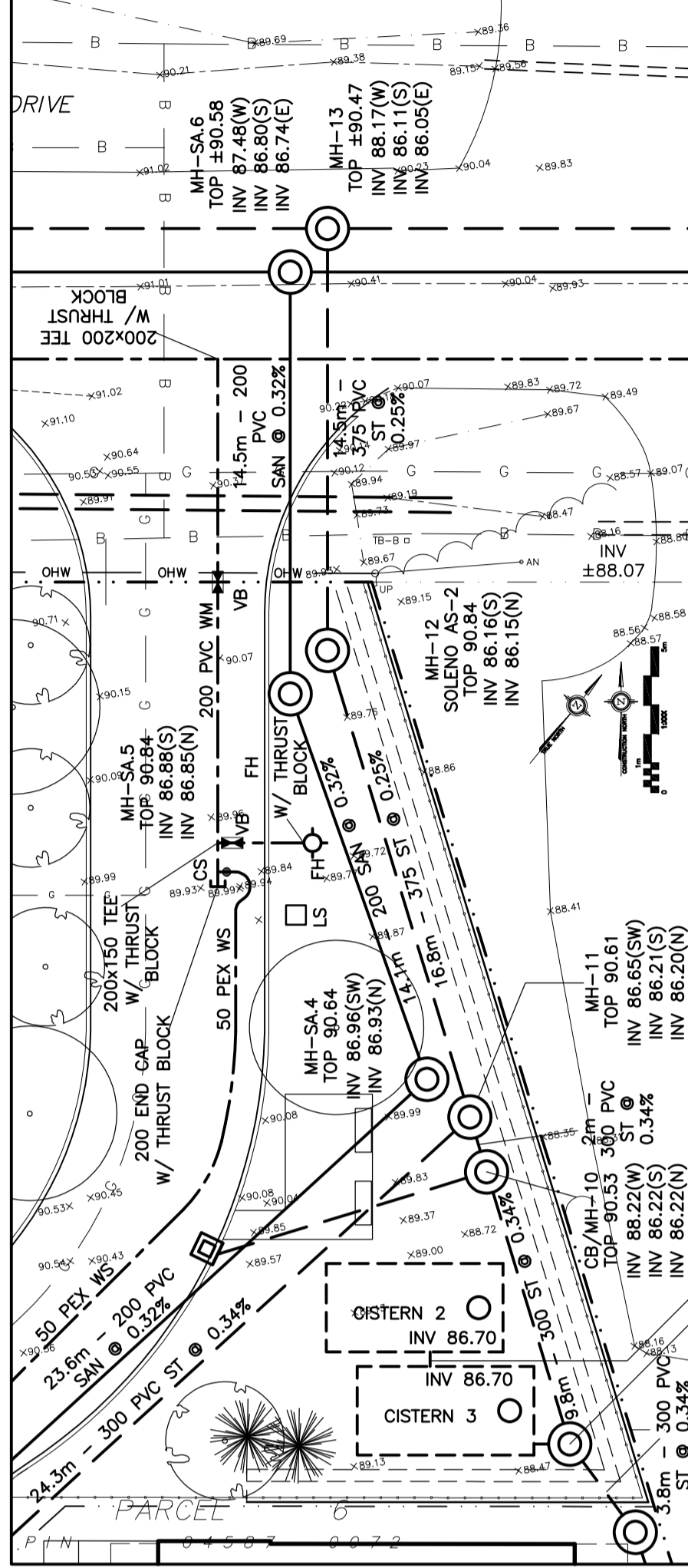
D. B. GRAY ENGINEERING INC.
 Surveying Management - Grading & Drainage - Storm & Sanitary Sewers - Foundations
 700 Long Point Circle
 Ottawa, Ontario K1G 0A4
 613-425-8044
 dgray@dbgrayengineering.com

Project
**PROPOSED
 RESIDENTIAL DEVELOPMENT
 1164-1166 HIGHCROFT DR.**
 MANOTICK, ONTARIO

Drawing Title
**PLAN & PROFILE
 PRIVATE ROAD**



Drawn: D.B.G.
 Hor. Scale: 1:200
 Vert. Scale: 1:40
 Date: JUN 14-19
 Job No.: 18035
 Drawing No.:
C-10
 of 11
 NOT VALID UNLESS
 SIGNED & DATED



STATION FROM MH 13	STATION TO MH 13	PIPE TYPE	INVERT	TOP OF WM	C/L OF ROAD
B+00.0	B+00.5	200 SAN	INV 86.17(M)	86.31	90.76
B+01.4	B+01.6	200 SAN	INV 86.16(S)	86.31	90.72
B+02.3	B+03.0	200 SAN	INV 86.22(S)	86.31	90.67
B+03.6	B+04.0	200 SAN	INV 86.22(S)	86.22	90.62
B+04.4	B+04.6	200 SAN	INV 86.16(S)	86.31	90.72
B+05.0	B+05.5	200 SAN	INV 86.17(M)	86.31	90.76
B+06.0	B+06.5	200 SAN	INV 86.17(M)	86.31	90.76
B+07.0	B+07.5	200 SAN	INV 86.17(M)	86.31	90.76
B+08.0	B+08.5	200 SAN	INV 86.17(M)	86.31	90.76
B+09.0	B+09.5	200 SAN	INV 86.17(M)	86.31	90.76
B+10.0	B+10.5	200 SAN	INV 86.17(M)	86.31	90.76
B+11.0	B+11.5	200 SAN	INV 86.17(M)	86.31	90.76
B+12.0	B+12.5	200 SAN	INV 86.17(M)	86.31	90.76
B+13.0	B+13.5	200 SAN	INV 86.17(M)	86.31	90.76

STATION FROM MH 13	STATION TO MH 13	PIPE TYPE	INVERT	TOP OF WM	C/L OF ROAD
B+00.0	B+00.5	200 SAN	INV 86.17(M)	86.31	90.76
B+01.4	B+01.6	200 SAN	INV 86.16(S)	86.31	90.72
B+02.3	B+03.0	200 SAN	INV 86.22(S)	86.31	90.67
B+03.6	B+04.0	200 SAN	INV 86.22(S)	86.22	90.62
B+04.4	B+04.6	200 SAN	INV 86.16(S)	86.31	90.72
B+05.0	B+05.5	200 SAN	INV 86.17(M)	86.31	90.76
B+06.0	B+06.5	200 SAN	INV 86.17(M)	86.31	90.76
B+07.0	B+07.5	200 SAN	INV 86.17(M)	86.31	90.76
B+08.0	B+08.5	200 SAN	INV 86.17(M)	86.31	90.76
B+09.0	B+09.5	200 SAN	INV 86.17(M)	86.31	90.76
B+10.0	B+10.5	200 SAN	INV 86.17(M)	86.31	90.76
B+11.0	B+11.5	200 SAN	INV 86.17(M)	86.31	90.76
B+12.0	B+12.5	200 SAN	INV 86.17(M)	86.31	90.76
B+13.0	B+13.5	200 SAN	INV 86.17(M)	86.31	90.76

STATION FROM CB/MH 4	STATION TO CB/MH 4	PIPE TYPE	INVERT	TOP OF WM	C/L OF ROAD
B+073.9	B+072.5	200 SAN	INV 88.28(N)	88.24	90.64
B+070	B+070	200 SAN	INV 87.21	88.24	90.64
B+060	B+060	200 SAN	INV 87.04(NE)	88.24	90.64
B+051.5	B+051.5	200 SAN	INV 86.76(S)	88.36	90.76
B+050	B+050	200 SAN	INV 87.04(NE)	88.36	90.76
B+040	B+040	200 SAN	INV 86.96(SW)	88.26	90.62
B+036	B+036	200 SAN	INV 86.22(N)	88.22	90.62
B+035.5	B+035.5	200 SAN	INV 86.96(SW)	88.26	90.62
B+030	B+030	200 SAN	INV 86.22(N)	88.22	90.62
B+023.3	B+023.3	200 SAN	INV 86.96(SW)	88.26	90.62
B+020	B+020	200 SAN	INV 86.22(N)	88.22	90.62
B+016.1	B+016.1	200 SAN	INV 86.96(SW)	88.26	90.62
B+014.4	B+014.4	200 SAN	INV 86.16(S)	86.31	90.72
B+010	B+010	200 SAN	INV 86.96(SW)	88.26	90.62
B+005	B+005	200 SAN	INV 86.22(N)	88.22	90.62
B+000	B+000	200 SAN	INV 86.96(SW)	88.26	90.62
B+004.5	B+004.5	200 SAN	INV 86.22(N)	88.22	90.62