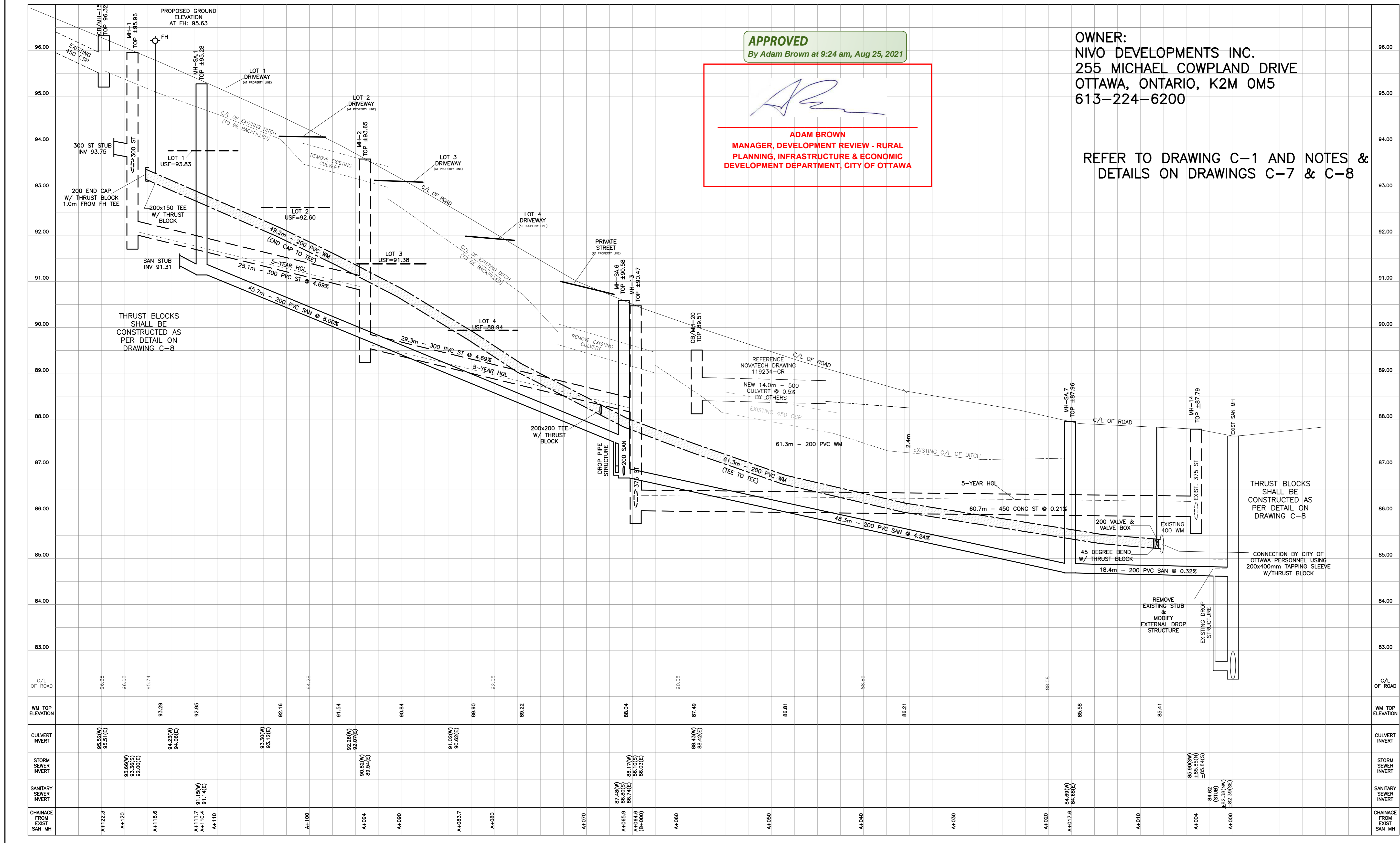


**DRAWING LEGEND**

- CB [ ] CATCH BASIN
- MH (O) MANHOLE
- CB/MH (O) CATCH BASIN/MANHOLE
- MH (O) SANITARY MANHOLE
- SPL --- SPRINGLINE OF PIPE
- INV --- INVERT OF PIPE
- SAN --- SANITARY SEWER
- ST --- STORM SEWER
- WS/WM --- WATER SERVICE/WATERMAIN
- CS --- CURB STOP & STANDPOST
- VB --- VALVE & VALVE BOX
- FH --- FIRE HYDRANT
- M --- WATER METER
- (R) --- REMOTE WATER METER READOUT
- EXISTING GRADE ELEVATION
- PROPERTY LINE
- FFL --- FIRST FLOOR ELEVATION
- TOF --- TOP OF FOUNDATION
- BFL --- BASEMENT FLOOR ELEVATION
- USF --- UNDERSIDE OF FOOTING

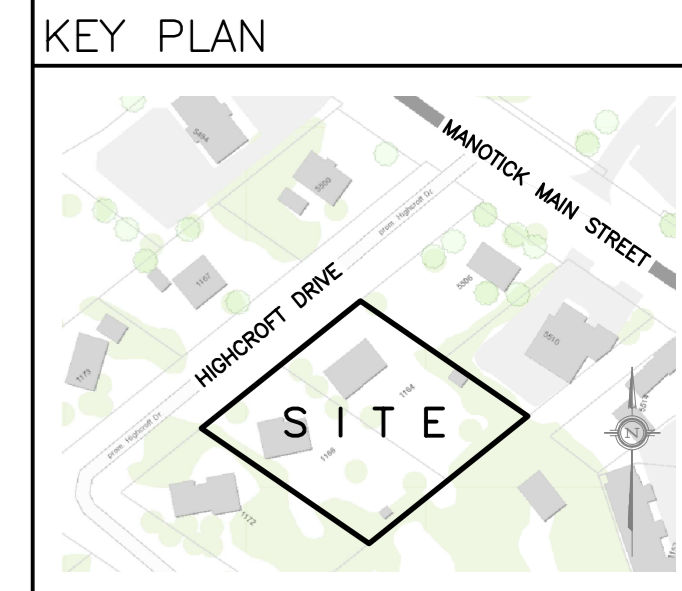


**APPROVED**  
By Adam Brown at 9:24 am, Aug 25, 2021

*Adam Brown*  
**ADAM BROWN**  
MANAGER, DEVELOPMENT REVIEW - RURAL  
PLANNING, INFRASTRUCTURE & ECONOMIC  
DEVELOPMENT DEPARTMENT, CITY OF OTTAWA

**OWNER:**  
NIVO DEVELOPMENTS INC.  
255 MICHAEL COWPLAND DRIVE  
OTTAWA, ONTARIO, K2M 0M5  
613-224-6200

REFER TO DRAWING C-1 AND NOTES &  
DETAILS ON DRAWINGS C-7 & C-8

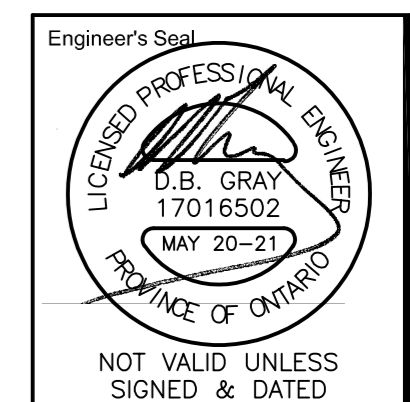


No.	DATE	REVISION
7	MAY 20-21	RE-ISSUED FOR APPROVAL
6	MAR 15-21	RE-ISSUED FOR APPROVAL
5	NOV 16-20	RE-ISSUED FOR APPROVAL
4	JUN 18-20	RE-ISSUED FOR APPROVAL
3	SEP 27-19	RE-ISSUED FOR APPROVAL
2	AUG 9-19	ISSUED FOR APPROVAL
1	JUN 14-19	PRELIMINARY

**D. B. GRAY ENGINEERING INC.**  
*Stormwater Management - Grading & Drainage - Storm & Sanitary Sewers - Watermain*  
700 Long Point Circle  
Ottawa, Ontario  
613-425-8044  
d.gray@dbgrayengineering.com

Project  
**PROPOSED  
RESIDENTIAL DEVELOPMENT  
1164-1166 HIGHCROFT DR.  
MANOTICK, ONTARIO**

Drawing Title  
**PLAN & PROFILE  
HIGHCROFT DR**



Drawn **D.B.G.**  
Hor. Scale 1:200  
Vert. Scale 1:40  
Date JUN 14-19  
Job No. 18035

Drawing No.  
**C-12  
of 14**

NOT VALID UNLESS  
SIGNED & DATED