

OWNER:  
 NIVO DEVELOPMENTS INC.  
 255 MICHAEL COMPLAND DRIVE  
 OTTAWA, ONTARIO, K2M 0M5  
 613-224-6200

**DRAWING LEGEND**

CB	CATCH BASIN
MH	MANHOLE
CB/MH	CATCH BASIN/MANHOLE
MH	SANITARY MANHOLE
---	EXISTING GRADE ELEVATION
+	PROPOSED GRADE ELEVATION
2%	EXISTING SLOPE OF GRADE
2%	PROPOSED SLOPE OF GRADE
T.O.S.	TOP OF SLOPE
B.O.S.	BOTTOM OF SLOPE
---	CENTERLINE OF SWALE
---	PROPERTY LINE
---	SILT FENCE BARRIER
---	150mm CURB/DEPRESSED CURB
---	LIGHT-DUTY PAVEMENT
---	HEAVY-DUTY PAVEMENT
---	CONCRETE
---	LANDSCAPE
---	FFL
---	TOP OF FOUNDATION
---	BFL
---	BASEMENT FLOOR ELEVATION
---	USF
---	UNDERSIDE OF FOOTING

**KEY PLAN**



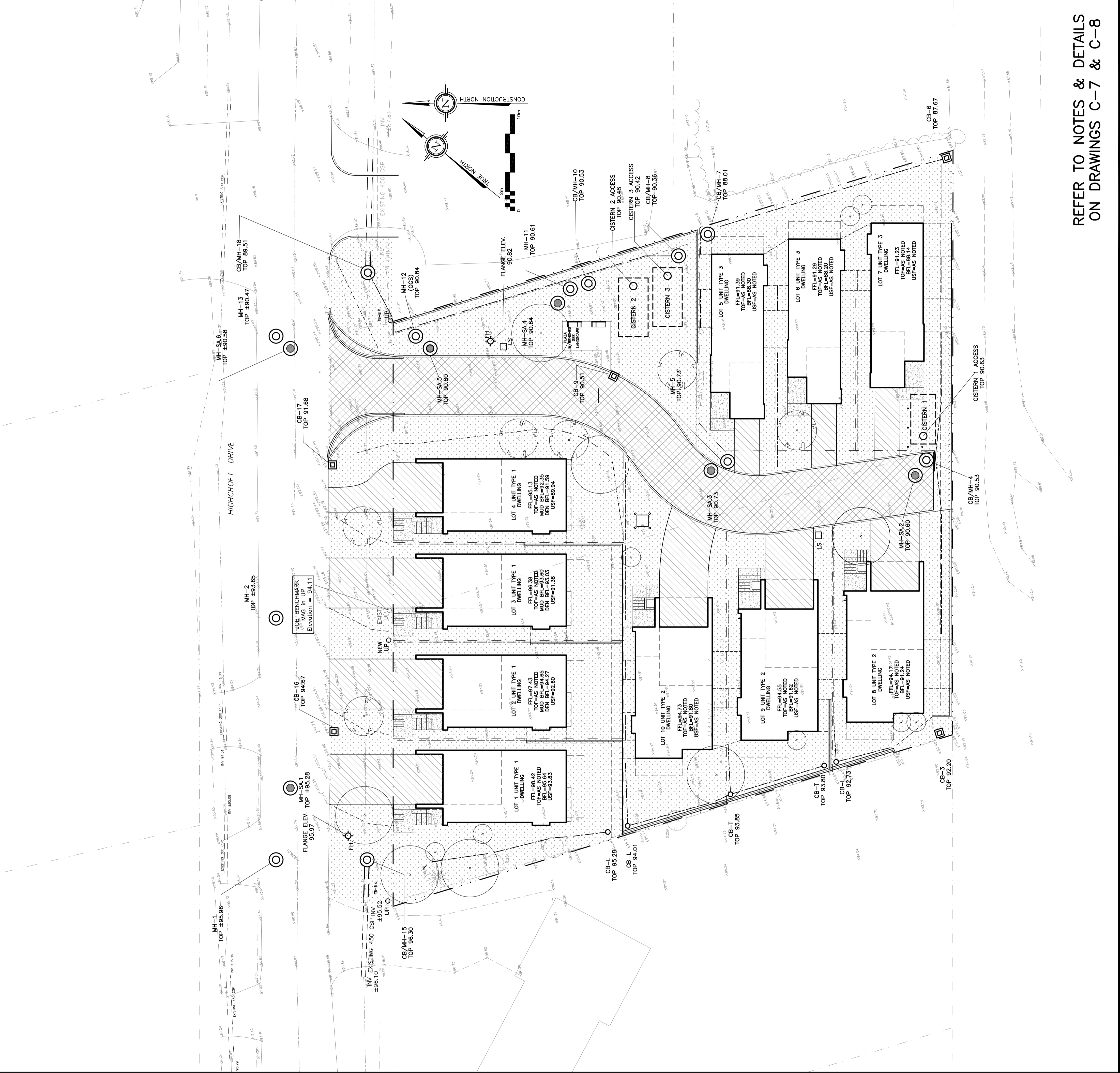
No.	DATE	REVISION
8	MAY 20-21	RE-ISSUED FOR APPROVAL
7	MAR 15-21	RE-ISSUED FOR APPROVAL
6	NOV 16-20	RE-ISSUED FOR APPROVAL
5	JUN 18-20	RE-ISSUED FOR APPROVAL
4	MAY 5-20	ISSUED FOR COORDINATION
3	SEP 27-19	RE-ISSUED FOR APPROVAL
2	AUG 9-19	ISSUED FOR APPROVAL
1	JUN 14-19	PRELIMINARY

**D. B. GRAY ENGINEERING INC.**  
 Surveying Management - Consulting & Planning - Storm & Sanitary Sewers - Drainage  
 700 Long Point Circle  
 Ottawa, Ontario  
 613-425-8044  
 dgray@dbgrayengineering.com

Project  
**PROPOSED  
 RESIDENTIAL DEVELOPMENT  
 1164-1166 HIGHCROFT DR.**  
 MANOTICK, ONTARIO

**SURFACES**

Engineer's Seal  
  
 Drawn: D.B.G.  
 Hor. Scale: 1:200  
 Vert. Scale: 1:10  
 Date: JUN 14-18  
 Job No.: 180335  
 Drawing No.: **C-5**  
 of **14**  
 NOT VALID UNLESS SIGNED & DATED



REFER TO NOTES & DETAILS  
 ON DRAWINGS C-7 & C-8