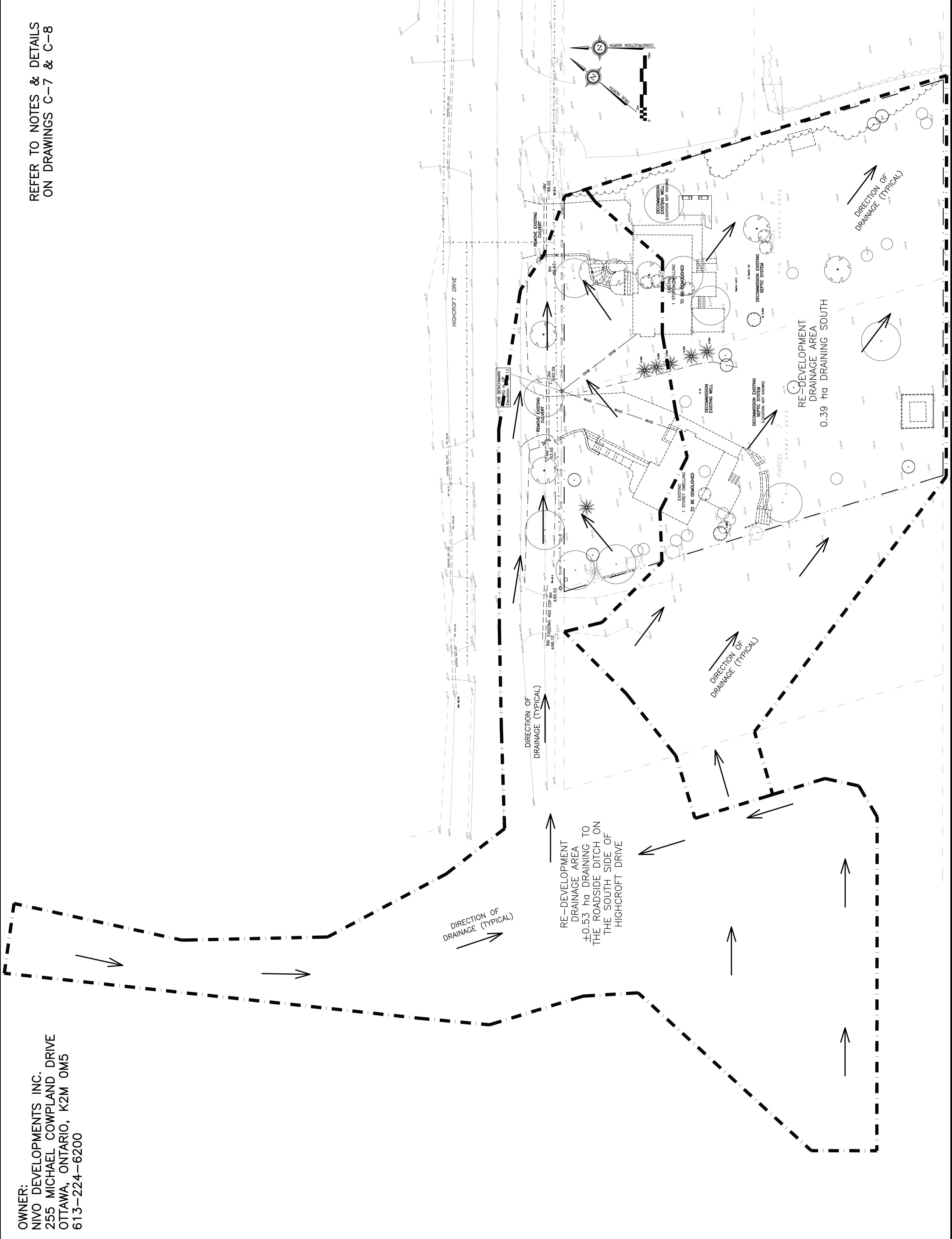


OWNER:
 NIVO DEVELOPMENTS INC.
 255 MICHAEL COMPLAND DRIVE
 OTTAWA, ONTARIO, K2M 0M5
 613-224-6200

REFER TO NOTES & DETAILS
 ON DRAWINGS C-7 & C-8



DRAWING LEGEND

CB	CATCH BASIN
MH	MANHOLE
CB/MH	CATCH BASIN/MANHOLE
MH	SANITARY MANHOLE
± 67.89	EXISTING GRADE ELEVATION
+67.89	PROPOSED GRADE ELEVATION
2%	EXISTING SLOPE OF GRADE
2%	PROPOSED SLOPE OF GRADE
T.O.S	TOP OF SLOPE
B.O.S	BOTTOM OF SLOPE
---	CENTERLINE OF SWALE
---	PROPERTY LINE
---	SILT FENCE BARRIER
D.C	150mm CURB/DEPRESSED CURB
///	LIGHT-DUTY PAVEMENT
///	HEAVY-DUTY PAVEMENT
---	CONCRETE
---	LANDSCAPE
FFL	FIRST FLOOR ELEVATION
TOF	TOP OF FOUNDATION
BFL	BASEMENT FLOOR ELEVATION
USF	UNDERSIDE OF FOOTING



No.	DATE	REVISION
4	MAR 15-21	RE-ISSUED FOR APPROVAL
3	NOV 16-20	RE-ISSUED FOR APPROVAL
2	JUN 18-20	RE-ISSUED FOR APPROVAL
1	MAY 5-20	ISSUED FOR COORDINATION

D. B. GRAY ENGINEERING INC.
 700 Long Point Circle
 Ottawa, Ontario
 613-425-8044
 dgray@dbgrayengineering.com

**PROPOSED
 RESIDENTIAL DEVELOPMENT
 1164-1166 HIGHCROFT DR.
 MANOTICK, ONTARIO**

**EXISTING CONDITIONS, REMOVALS
 & DECOMMISSIONING AND
 PRE-DEVELOPMENT DRAINAGE PLAN**

Engineer's Seal
PROFESSIONAL ENGINEER
 O.C. GRAY
 77016502
 SINCE 19-20
 REG. NO. OF
ONTARIO

Drawn: D.B.G.
 Hor. Scale: 1:250
 Vert. Scale:
 Date: JUN 14-18
 Job No.: 180335
 Drawing No.:
C-2
 of 14

NOT VALID UNLESS
 SIGNED & DATED