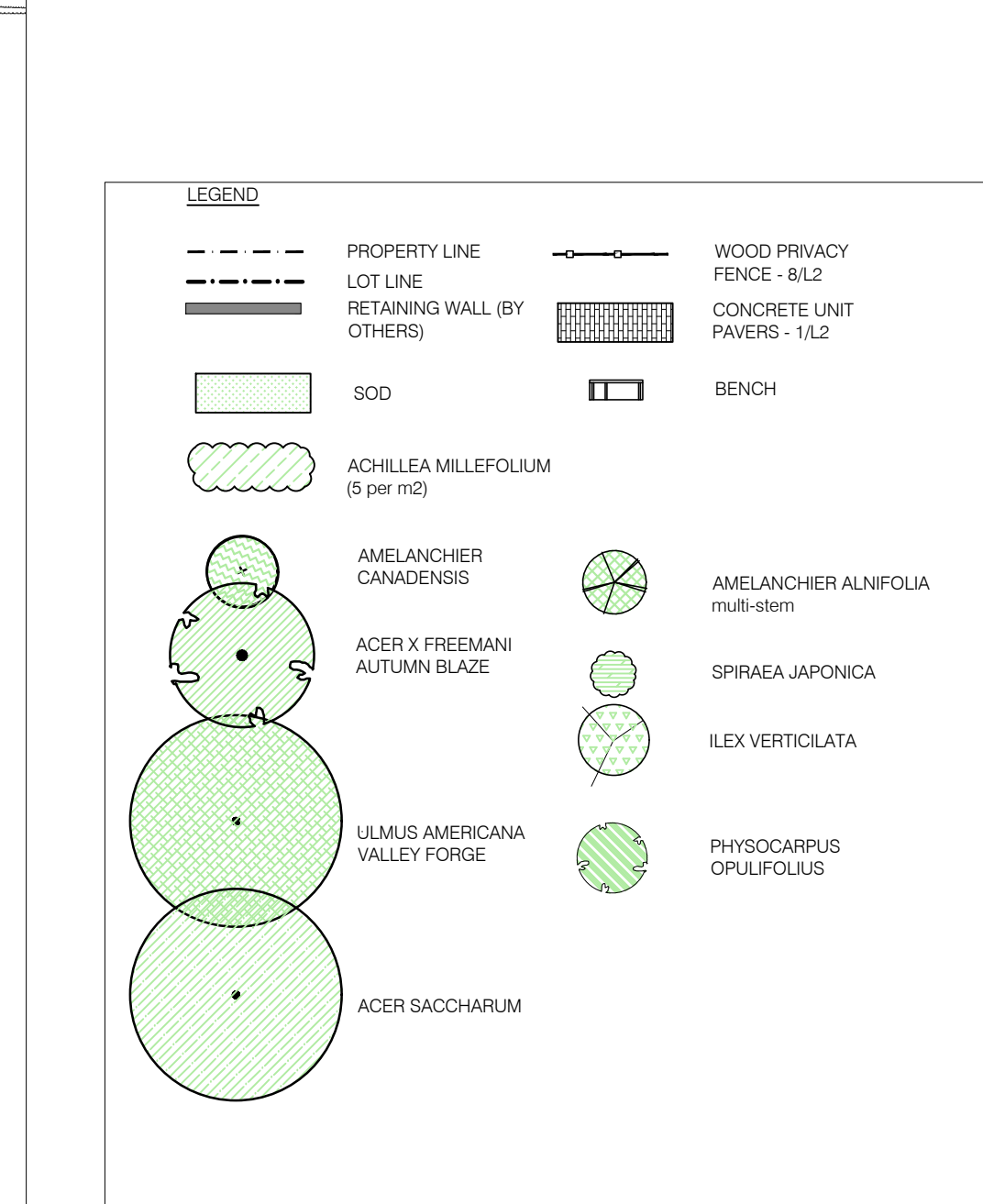


PLANT LIST (SPA)

| DECIDUOUS TREES | | | | | |
|-----------------|-----|--|------------------------|------------|--------------|
| KEY | QTY | BOTANICAL NAME | COMMON NAME | SIZE | COMMENTS |
| AC | 8 | Amelanchier canadensis | Serviceberry | 50mm | WB, Treeform |
| AF | 6 | Acer x freemanii Autumn Blaze (Jeffersred) | Autumn Blaze Maple | 60mm | WB |
| AS | 4 | Acer saccharum | Sugar Maple | 60mm | WB |
| UA | 4 | Ulmus americana 'Valley Forge' | Valley Forge Elm | 60mm | WB |
| SHRUBS | | | | | |
| KEY | QTY | BOTANICAL NAME | COMMON NAME | SIZE | COMMENTS |
| Aa | 16 | Amelanchier alnifolia 'Regent' multi-stem | Regent Saskatoon Berry | 125cm 7gal | pot |
| Sj | 11 | Spiraea japonica | Gold Mound | 50cm 3 gal | pot |
| Iv | 4 | Ilex verticillata | Winterberry Holly | 2 gal | pot |
| Po | 8 | Physocarpus opulifolius 'Dart's Gold' | Dart's Gold Ninebark | 50cm 3 gal | pot |
| PERENNIALS | | | | | |
| KEY | QTY | BOTANICAL NAME | COMMON NAME | SIZE | COMMENTS |
| Am | 285 | Achillea millefolium | Yarrow | 2 gal | pot |
| SOD | | | | | |
| QTY (m2) 1672 | | | | | |



- OFFSET AND CLEARANCE NOTES:**
- CONTRACTOR TO LAYOUT PLANTING BEDS, PATHWAYS ETC. TO APPROVAL OF LANDSCAPE ARCHITECT PRIOR TO ANY EXCAVATION.
 - ALL TREES MUST BE CLEAR OF INTERSECTION SIGHT TRIANGLES. OBTAIN APPROVAL OF PLANTING LAYOUT PRIOR TO DIGGING.
 - TREE PLANTING SHALL BE HAND EDUCATED FOR THOSE LOCATIONS WITH LESS THAN 1 M CLEARANCE TO ANY UNDERGROUND UTILITIES.
 - TREES SHALL BE PLACED TO PROVIDE A MINIMUM SEPARATION DISTANCE OF 3 M FROM THE ACCESS DOOR AND 1.5 M FROM DECKS AND BACKS OF HYDRO TRANSFORMERS; 1 M FROM HOVWAYS; 1.5 M FROM WATER STANDPIPES; 1.5 M FROM SIDEWALKS; 1.5 M FROM BACK OF CURBS FOR DECIDUOUS TREES AND 4.5 M FROM BACK OF CURBS FOR CONIFEROUS TREES.
 - TREES ARE TO BE LOCATED A MINIMUM DISTANCE OF 1.5 M FROM WATER AND SEWER SERVICES, AND A MINIMUM DISTANCE OF 1.5 M FROM A GAS SERVICE.
 - LARGE AND MEDIUM TREES ARE TO BE LOCATED A MINIMUM DISTANCE OF 4.5 M FROM STREETLIGHTS. SMALL TREES ARE TO BE LOCATED A MINIMUM DISTANCE OF 2.0 M FROM STREETLIGHTS. CLEARANCES FROM UTILITY POLES SHALL BE AS PER THE DIRECTION OF THE AFFECTED UTILITY.
 - TREES ARE TO BE LOCATED A MINIMUM DISTANCE OF 1.5 M FROM COMMUNITY MAILBOXES AND BUS STOPS.
 - NO TREES ARE TO BE PLANTED IN TOWN-HOURS ACCESS EASEMENTS OR DRAINAGE EASEMENTS.
 - REFER TO ENGINEERING CROSS SECTIONS FOR ACTUAL LOCATION OF JOINT UTILITY TRENCH LOCATIONS.
- LANDSCAPE NOTES:**
- LANDSCAPE CONTRACTOR SHALL CONFIRM CONSTRUCTION TIMING WINDOW WITH THE OWNER AND THE CITY OF OTTAWA.
 - REASONABLE MEASURES SHALL BE UNDERTAKEN TO LIMIT GRADE DISTURBANCE CAUSED BY HEAVY EQUIPMENT USAGE IN VICINITY OF PROPOSED LANDSCAPE.
 - PLANT MATERIAL SHALL BE NOT GRAB AND SHALL COMPLY WITH THE METRIC SLICE SPECIFICATIONS FOR NURSERY STOCK (LATEST EDITION), PUBLISHED BY THE CANADIAN NURSERY TRADES ASSOCIATION.
 - PLANT SUBSTITUTIONS SHALL NOT BE PERMITTED UNLESS APPROVED BY THE LANDSCAPE ARCHITECT AND THE CITY OF OTTAWA.
 - NATIVE AND NON-INVASIVE NURSERY-GROWN PLANT STOCK IS SPECIFIED HEREIN IN KEEPING WITH THE PRINCIPLES OF URBAN FORESTRY MANAGEMENT BEST PRACTICES AND SUPPLIED BY NURSERIES THAT SUPPORT SUSTAINABLE PRACTICES IN PLANT PRODUCTION.
 - ALL PROPOSED LANDSCAPE DESIGN (PLANTING PLAN WITH THE PROPORTION) SHALL BE COMPLIANT WITH CITY OF OTTAWA STANDARDS FOR ACCESSIBLE DESIGN (CITY OF OTTAWA ACCESSIBLE DESIGN STANDARDS) AND THE CITY OF OTTAWA STANDARDS FOR ACCESSIBLE DESIGN.
 - PLANTS SHALL BE HANDLED WITH CARE SO AS NOT TO BREAK UP SOIL ROOT CLOSURE OR BRANCHES.
 - ON SITE, ALL PLANTS SHOULD BE PROTECTED FROM SUN AND DRYING WINDS AND SHOULD BE WATERED FREQUENTLY UNTIL PLANTING.
 - PITS AND PLANTING BEDS SHOULD BE LOCATED ACCORDING TO THE DRAWINGS AND SHALL BE OF SUFFICIENT SIZE ACCORDING TO THE DETAILS PROVIDED.
 - ALL SURFACES OF PLANTING BEDS (RESERVOIRS AND SAUCERS) FOR TREE PLANTING PITS WILL BE COVERED WITH MULCH NATURAL CEDAR AS PER CITY OF OTTAWA STANDARDS, UNLESS NOTED OTHERWISE.
 - THE PLANTS SHALL BE AMENDED INDIVIDUALLY - DIRECTLY IN THE PLANTING HOLE WITH COMPOST, BROWN MEAL, AND MYCORRHIZAE (BENEFICIAL FUNGUS) ACCORDING TO MANUFACTURER RECOMMENDATIONS.
 - PLANTS SHOULD BE WATERED LESS THAN AN HOUR AFTER PLANTING AND AGAIN IN THE SAME DAY.
 - ALL DECIDUOUS TREES SHALL BE PROTECTED AGAINST HOBBING WITH AN SPRING-SET PEX-VENTHURD GUARD MINIMUM 300MM HIGH INSTALLED AT THE BASE OF THE TRUNK, UNLESS OTHERWISE NOTED. GUARDS TO BE REMOVED IMMEDIATELY AFTER PLANTING AND BEFORE PLANTING CONTRACTOR.
 - WINTER PROTECTION: NECESSARY PROTECTION SHALL BE INSTALLED FOR ALL FRAGILE PLANTS TO PROTECT AGAINST WINTER WINDS OR LIKEY DAMAGE BY SNOW - FOR EXAMPLE, THE BASE OF THE TRUNK SHOULD BE PROTECTED WITH MULCH OR OTHER MATERIAL. THE PROTECTION SHALL BE REMOVED AND APPROVED AT THE END OF THE PLANTING WORKS BY THE LANDSCAPE ARCHITECT. PROTECTIONS MUST BE ADAPTED TO EACH PLANT OR GROUP OF PLANTS.
 - CONIFEROUS TREES TO BE PROTECTED WITH 4 STRAPS AT DRIPLINE DISTANCE WRAPPED HORIZONTALLY WITH WRAPPING MATERIAL (NEW BURLAP), COMPLETELY WRAP EACH TREE IN THE FALL PRIOR TO FIRST MAJOR SNOWFALL.
 - TURF FOR ALL LOTS AND COMMON AREAS SHALL BE NO. 1 NURSERY GRADE SOIL CONFORMING TO THE CANADIAN NURSERY STOCK GROWERS SPECIFICATION, INSTALLED ON MIN. 125MM TOPSOIL OVER SCARIFIED SUB-BASE.
- MAINTENANCE NOTES:**
- CONTRACTOR SHALL GUARANTEE ALL PLANT MATERIAL FOR A PERIOD OF ONE (1) FULL YEAR FROM THE DATE OF FINAL ACCEPTANCE, UNLESS LOCATED ON CITY PROPERTY WHERE A TWO (2) YEAR EXTENDED WARRANTY SHALL APPLY PER CITY OF OTTAWA STANDARDS.
 - ALL PLANT MATERIAL SHALL BE MAINTAINED SO THAT THEY REMAIN IN THE SAME QUALITY AND REQUIREMENTS PRESCRIBED FOR THE ORIGINAL MATERIAL, PLANTS WHICH HAVE DIED DURING THE PERIOD OF WARRANTY SHALL BE REPLACED CONSISTENT WITH THE ALLOWABLE PLANTING SEASON. DEAD PLANT MATERIAL REPLACED UNDER WARRANTY SHALL BE REMOVED, PLANT MATERIAL REPLACED UNDER WARRANTY SHALL CONFORM WITH ALL SPECIFICATIONS OF THE ORIGINAL CONTRACT INCLUDING THE WARRANTY FROM THE DATE OF REPLACEMENT PLANTING.
 - MAINTENANCE IMMEDIATELY AFTER THE PLANTS ARE INSTALLED AND CONTINUED THROUGHOUT THE ENTIRE WARRANTY PERIOD SHALL BE PROVIDED. MAINTENANCE REQUIREMENTS SHALL INCLUDE ALL PROCEDURES CONSISTENT WITH PROPER HORTICULTURAL PRACTICES TO ENSURE NORMAL, VIGOROUS AND HEALTHY GROWTH OF ALL MATERIAL PLANTED INCLUDING SEED AND SOIL. MAINTENANCE SHALL INCLUDE BUT NOT BE LIMITED TO THE FOLLOWING:
 - REGULAR CULTIVATION AND WEED CONTROL OF PLANTING BEDS AND TREE PITS (NO PESTICIDES OR HERBICIDES IN ACCORDANCE WITH MUNICIPAL BY-LAWS AND PROVINCIAL LEGISLATION)
 - WATERING IMMEDIATELY ONCE A WEEK FOR THE FIRST FOUR WEEKS, WHEN REQUIRED THEREAFTER AND IN SUFFICIENT QUANTITIES TO SATURATE THE ROOT SYSTEM AND TO ENSURE SUFFICIENT MOISTURE FOR VIGOROUS PLANT MATERIAL GROWTH. ENSURE ADEQUATE MOISTURE IN THE ROOTBALL AT TIME OF FIRST FREEZE.
 - PRUNING, INCLUDING THE REMOVAL AND DISPOSAL OF DEAD OR BROKEN BRANCHES.
 - THE MAINTENANCE OF ALL ACCESSORIES IN GOOD CONDITION AND PROPERLY ADJUSTED INCLUDING THE REPAIR OR REPLACEMENT OF ACCESSORIES AS REQUIRED AT NO ADDITIONAL EXPENSE TO THE OWNER.
 - AT THE TIME OF FINAL WARRANTY ACCEPTANCE, ALL MATERIAL MUST BE IN A HEALTHY AND VIGOROUS CONDITION. WEEDS AND TREE PITS MUST BE FREELY CULTIVATED AND FREE OF WEEDS, RUBBISH AND DEBRIS. ALL STAKES, WIRES, HOSE AND OTHER ACCESSORIES MUST BE REMOVED UPON FINAL ACCEPTANCE, EXCEPT FOR PLANT MATERIAL UNDER WARRANTY.

| | | |
|-----|------------|----------------------------------|
| 26 | 2021/09/18 | ISSUED FOR SITE PLAN REVIEW |
| 27 | 2021/11/12 | ISSUED FOR SITE PLAN REVIEW |
| 28 | 2022/04/14 | ISSUED FOR SITE PLAN REVIEW |
| 29 | 2022/05/16 | ISSUED FOR SITE PLAN REVIEW |
| 30 | 2022/05/18 | ISSUED FOR SITE PLAN APPLICATION |
| 31 | 2022/06/11 | PRELIMINARY FOR CLIENT REVIEW |
| no. | date | revision |

GENERAL NOTES:

- ALL GENERAL SITE INFORMATION AND CONDITIONS COMPILED FROM EXISTING PLANS, SURVEYS, AERIAL PHOTOS, AND CONSULTANT FIELD NOTES.
- THIS DRAWING SHALL BE READ IN CONJUNCTION WITH ALL RELEVANT ENGINEERING AND RELATED DRAWINGS AND DOCUMENTS.
- REFER TO ENGINEERING DRAWINGS FOR GRADING AND SERVICES LAYOUTS.
- THE LOCATION OF THE TREES SHOWN ON THIS PLAN IS APPROXIMATE AND SHALL NOT BE SCALED FROM THIS DRAWING. THIS PLAN MUST BE READ IN CONJUNCTION WITH THE APPROVED COMPOSITE UTILITY PLAN AND THE RESTRICTIONS LISTED BELOW IN ORDER TO SITE EACH INDIVIDUAL TREE.
- DO NOT SCALE THIS DRAWING.
- RESPECT ALL CLEARANCES PRIOR TO COMMENCING WORK. NO RESPONSIBILITY IS BORNE BY THE CONSULTANT FOR UNKNOWN SUBSURFACE CONDITIONS.
- THE INSTALLER SHALL ENSURE THAT ALL UTILITY LOCATES ARE OBTAINED PRIOR TO ANY EXCAVATION FOR LANDSCAPING.
- INDIVIDUAL UTILITY CO. MUST BE CONTACTED FOR CONFIRMATION OF UTILITY EXISTENCE AND LOCATION PRIOR TO DIGGING.
- CONTRACTOR TO CHECK AND VERIFY ALL DIMENSIONS ON SITE AND REPORT ANY ERRORS AND/OR OMISSIONS TO THE CONSULTANT.
- REINSTATE ALL AREAS AND ITEMS DAMAGED AS A RESULT OF CONSTRUCTION ACTIVITIES TO THE SATISFACTION OF THE CONSULTANT, INCLUDING AREAS BEYOND THE PROPERTY LINE.
- DRAWING MAY NOT BE USED FOR CONSTRUCTION UNTIL SIGNED BY LANDSCAPE ARCHITECT AS ISSUED FOR CONSTRUCTION.
- THE ACCURACY OF THE POSITION OF UTILITIES IS NOT GUARANTEED.
- THIS DRAWING IS AN INSTRUMENT OF SERVICE AND REQUIRES THE PERMISSION OF THE LANDSCAPE ARCHITECT FOR USE. COPYRIGHT IS RESERVED BY LASHLEY + ASSOCIATES CORPORATION.

OWNER'S INFORMATION:

Nivo Developments Inc.
 255 Michael Cowpland Drive
 Ottawa, ON, K2M 0M5
 613.224.6200

DRAWN BY:

LASHLEY + ASSOCIATES
 LANDSCAPE ARCHITECTURE & SITE CONSTRUCTION
 500-660 QUADRICORP AVENUE
 OTTAWA, ON K1Y 8B9
 T 613 228 4071
 F 613 228 4070
 W www.lashley.ca

PROJECT LOCATION:
 1164-1166 HIGHCROFT DR.
 MANOTICK
 OTTAWA, ONTARIO

DRAWING TITLE:
 LANDSCAPE PLAN

| | | |
|---------------------------|------------------------------|------------------------|
| DRAWN BY: R3 | DATE: MAR 12, 2021 | SCALE: 1:150 |
| PROJECT: 1974-1 | DRAWING NO.: L1 | REVISION NO.: |

1 LANDSCAPE PLAN

