

OWNER:
 NIVO DEVELOPMENTS INC.
 255 MICHAEL COWPLAND DRIVE
 OTTAWA, ONTARIO, K2M 0M5
 613-224-6200

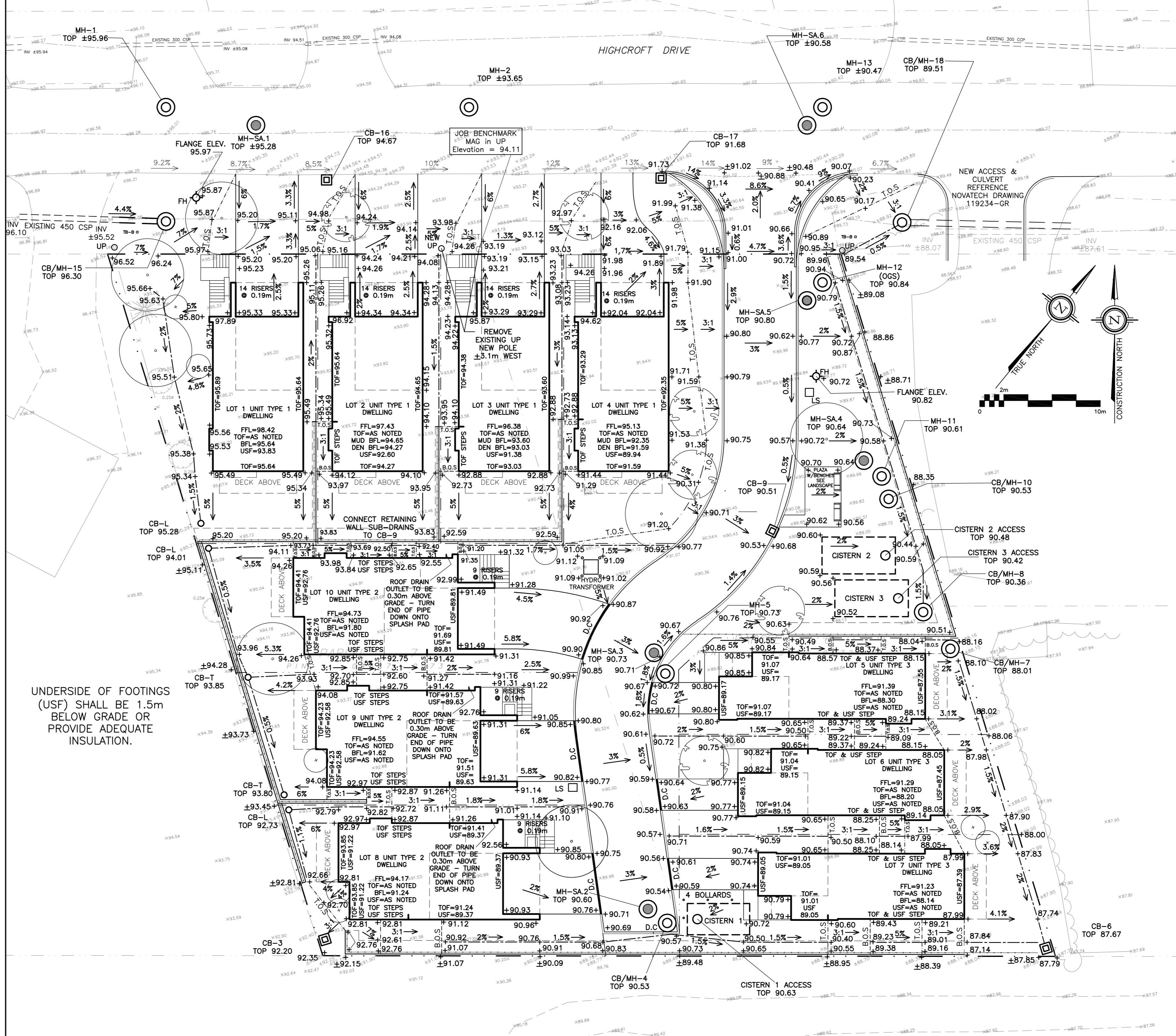
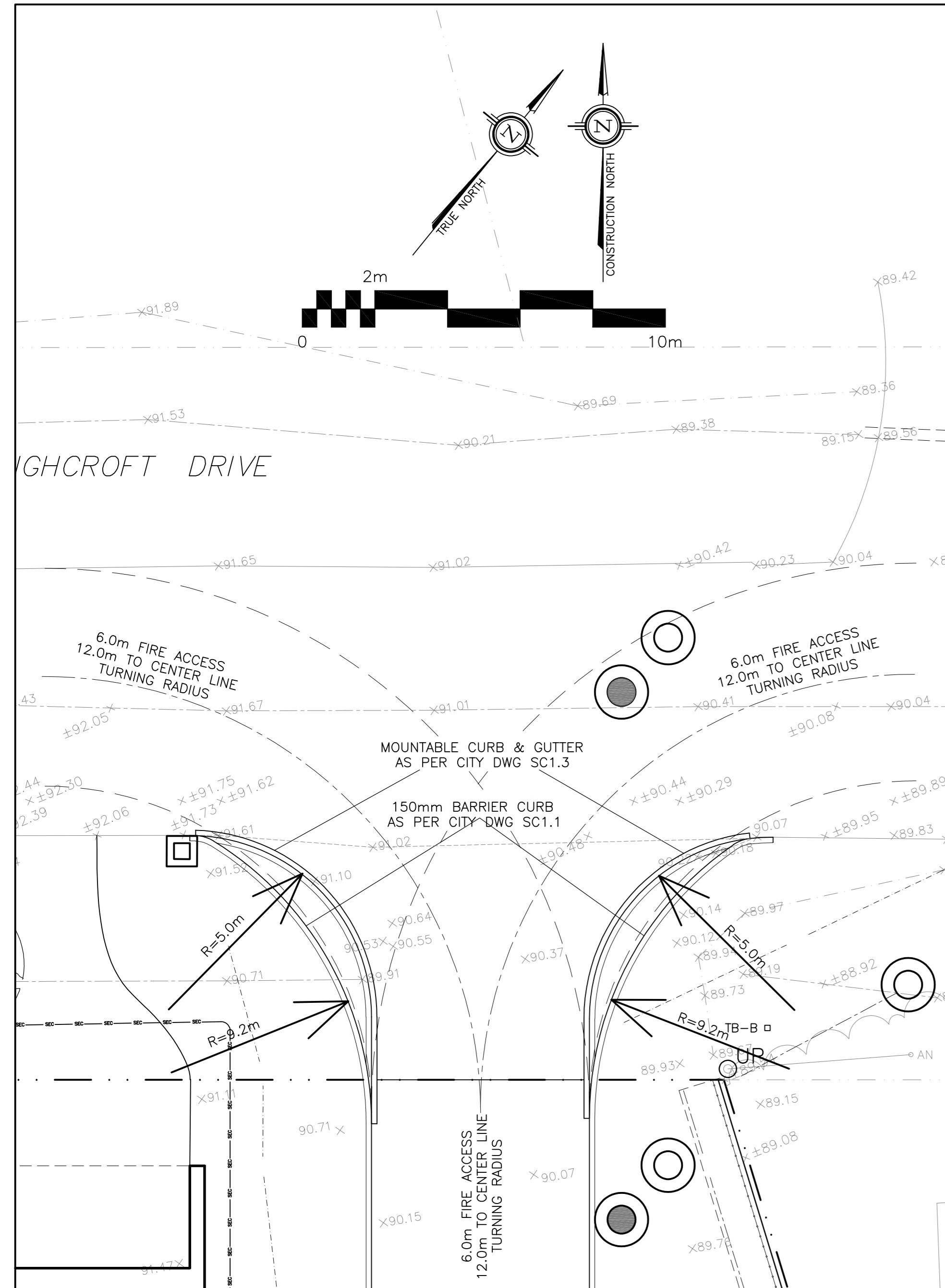
APPROVED
 By Adam Brown at 9:33 am, Aug 25, 2021



ADAM BROWN
 MANAGER, DEVELOPMENT REVIEW - RURAL
 PLANNING, INFRASTRUCTURE & ECONOMIC
 DEVELOPMENT DEPARTMENT, CITY OF OTTAWA

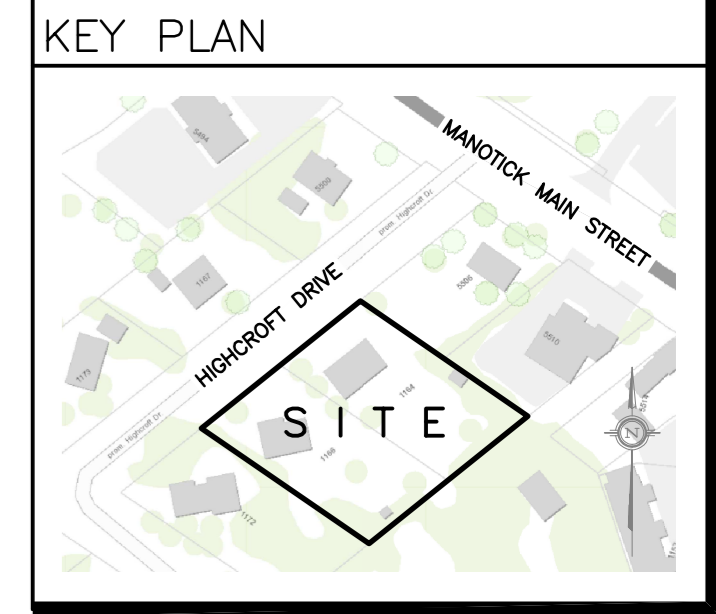
THE EXISTING JOB BENCHMARK IS ON A
 UTILITY POLE THAT WILL BE RELOCATED.
 THE SURVEYOR SHALL ESTABLISH AN
 ALTERNATIVE JOB BENCHMARK PRIOR TO
 THE COMMENCEMENT OF CONSTRUCTION.

AN EXISTING TRANSFORMER AND STREET LIGHT
 ARE CONNECTED TO POLE TO BE REMOVED AND
 SHALL BE CONNECTED TO NEW POLE.



DRAWING LEGEND

- CB [Symbol] CATCH BASIN
- MH [Symbol] MANHOLE
- CB/MH [Symbol] CATCH BASIN/MANHOLE
- MH [Symbol] SANITARY MANHOLE
- +67.89 [Symbol] EXISTING GRADE ELEVATION
- +67.89 [Symbol] PROPOSED GRADE ELEVATION
- 2% [Symbol] EXISTING SLOPE OF GRADE
- 2% [Symbol] PROPOSED SLOPE OF GRADE
- T.O.S [Symbol] TOP OF SLOPE
- B.O.S [Symbol] BOTTOM OF SLOPE
- [Symbol] CENTERLINE OF SWALE
- [Symbol] PROPERTY LINE
- [Symbol] SILT FENCE BARRIER
- [Symbol] D.C 150mm CURB/DEPRESSED CURB
- [Symbol] LIGHT-DUTY PAVEMENT
- [Symbol] HEAVY-DUTY PAVEMENT
- [Symbol] CONCRETE
- [Symbol] LANDSCAPE
- FFL [Symbol] FIRST FLOOR ELEVATION
- TOF [Symbol] TOP OF FOUNDATION
- BFL [Symbol] BASEMENT FLOOR ELEVATION
- USF [Symbol] UNDERSIDE OF FOOTING




No.	DATE	REVISION
9	MAY 31-21	RE-ISSUED FOR APPROVAL
8	MAY 20-21	RE-ISSUED FOR APPROVAL
7	MAR 15-21	RE-ISSUED FOR APPROVAL
6	NOV 16-20	RE-ISSUED FOR APPROVAL
5	JUN 18-20	RE-ISSUED FOR APPROVAL
4	MAY 5-20	ISSUED FOR COORDINATION
3	SEP 27-19	RE-ISSUED FOR APPROVAL
2	AUG 9-19	ISSUED FOR APPROVAL
1	JUN 14-19	PRELIMINARY

D. B. GRAY ENGINEERING INC.
 Stormwater Management - Grading & Drainage - Storm & Sanitary Sewers - Watermain
 700 Long Point Circle 613-425-8044
 Ottawa, Ontario d.gray@dbgrayengineering.com

Project
PROPOSED RESIDENTIAL DEVELOPMENT
 1164-1166 HIGHCROFT DR.
 MANOTICK, ONTARIO

Drawing Title
GRADING PLAN

Engineer's Seal

 D.B. GRAY
 17016502
 MAY 31-21
 PROVINCE OF ONTARIO

Drawn D.B.G.
 Hor. Scale 1:200
 Vert. Scale 1:100
 Date JUN 14-18
 Job No. 18035

Drawing No.
C-3
 of 14

NOT VALID UNLESS SIGNED & DATED