

Contractor to verify all dimensions & conditions on site and immediately notify the departmental representative of all discrepancies.



- GENERAL NOTES**
- All general site information and conditions compiled from architect's and engineer's plans and surveys.
  - Do not scale this drawing.
  - Report any discrepancies prior to commencing work. No responsibility is born by the Landscape Architect for unknown subsurface conditions.
  - Contractor to check and verify all dimensions on site and report any errors and/or omissions to the Landscape Architect.
  - Reinstate all areas and items damaged as a result of construction activities to the satisfaction of the Landscape Architect.
  - Contractor to layout planting beds, pathways etc. to approval of Landscape Architect prior to any excavation.
  - Drawing may not be used for construction until signed by Landscape Architect as issued for construction.
  - The accuracy of the position of utilities is not guaranteed.
  - Individual utility co. must be contacted for confirmation of utility existence and location prior to digging.
  - This drawing is an instrument of service and requires the permission of the Landscape Architect for use. Copyright is reserved by the Landscape Architect, David M. Lushley.

- REVISION NOTES**
- Revision to loading dock layout. Bike storage and waste / recycling bins are located on the south wall of the loading dock.
  - All trees on Wellington Street changed to Celebration Maples (Acer x freemantli 'Colzani')
  - All trees on Sparks Street changed to Armstrong Gold Maples (Acer rubrum 'Armstrong Gold' (US-KW76))

no.	description	date
4	ISSUED FOR CITY OF OTTAWA SITE COORDINATION (R)	20200302
3	ISSUED FOR CITY OF OTTAWA SITE COORDINATION (R)	20200219
2	ISSUED FOR CITY OF OTTAWA SITE COORDINATION (R)	20200100
1	ISSUED FOR CITY OF OTTAWA SITE COORDINATION	20190805

revisions	description	date
A	A detail no. no. du detail	
B	B location drawing no. and design no.	
C	C drawing no. design no.	

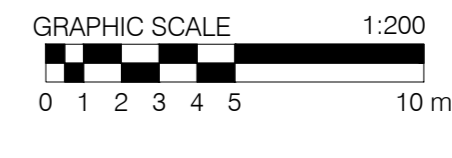
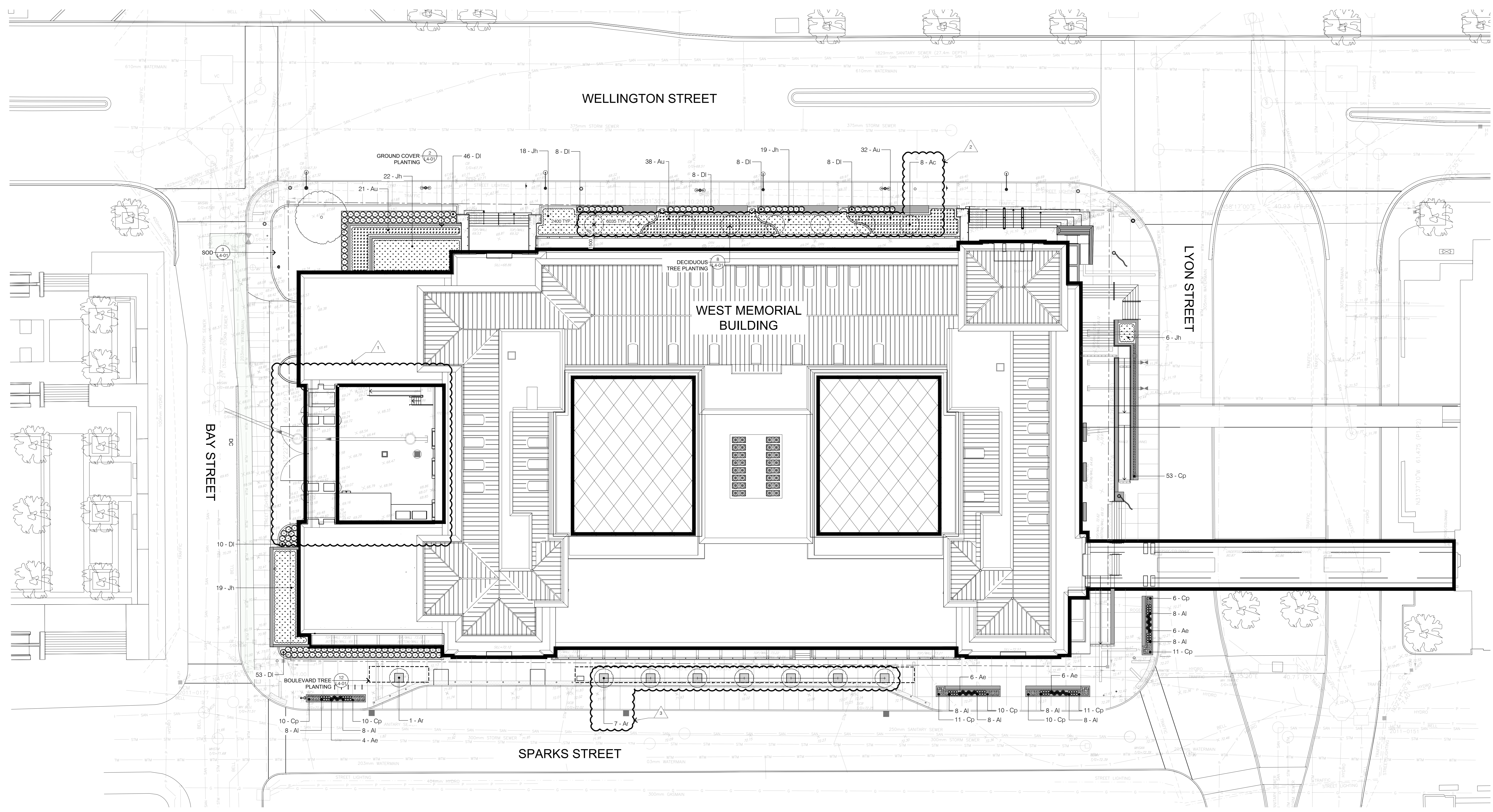
project  
**WEST MEMORIAL BUILDING - REHABILITATION PROJECT**  
344 Wellington Street, Ottawa, ON

drawing  
**PLANTING PLAN**  
dessin

Designed By	RC	Conçu par	
Date	11/30/18	(yyyy/mm/dd)	
Drawn By	JC	Dessiné par	
Date	11/30/18	(yyyy/mm/dd)	
Reviewed By	RC	Examiné par	
Date	11/30/18	(yyyy/mm/dd)	
Approved By	RC	Approuvé par	
Date	11/30/18	(yyyy/mm/dd)	
Tender		Soumission	

Project Manager / Administrateur de projets  
Project no. / No. du projet  
**R.086471.405**

Drawing no. / No. du dessin  
**L3-01**



**L3-01 PLANT LIST**

SYMBOL	QTY	BOTANICAL NAME	COMMON NAME	SIZE	COMMENTS
AI	8	Acer x freemantli 'Colzani'	Celebration Maple	60mm Cal.	Wise Basket
AI	8	Acer rubrum 'Armstrong Gold' (US-KW76)	Armstrong Gold Maple	60mm Cal.	Wise Basket
<b>SHRUBS</b>					
AU	91	Acrostichum sp. var. sp.	Berberis	50cm PT	Planted
DI	141	Diervilla lonicera	Bush Honey-suckle	2 GAL	Planted
JH	84	Juncus floribundus	Creeper Jumper	45cm, 3 GAL	Planted
<b>GRASSES AND PERENNIALS</b>					
AE	22	Aster ericoides	Heath Aster	1 GAL	Planted
AI	64	Allium cernuum	Nodding Onion	1 GAL	Planted
CP	132	Carex pennsylvanica	Oak Sedge	1 GAL	Planted

**LEGEND:**

- PROPERTY LINE
- |||| BIKE RACK
- ⊕ PROPOSED DECIDUOUS TREE
- ⊕ PROPOSED GROUND COVER / SHRUB PLANTINGS
- ▬ CONCRETE SEAT WALL WITH PLANTER
- ⊕ HISTORICAL STREET LIGHT
- ⊕ HISTORICAL PEDESTRIAN LIGHT
- LIGHT STANDARD
- ▬ TACTILE PAVING
- ▬ CONCRETE PAVING
- - - TREE CELL EXTENTS