

Contractor to verify all dimensions & conditions on site and immediately notify the departmental representative of all discrepancies.



- GENERAL NOTES**
- All general site information and conditions compiled from architect's and engineer's plans and surveys.
 - Do not scale this drawing.
 - Report any discrepancies prior to commencing work. No responsibility is born by the Landscape Architect for unknown subsurface conditions.
 - Contractor to check and verify all dimensions on site and report any errors and/or omissions to the Landscape Architect.
 - Reinstate all areas and items damaged as a result of construction activities to the satisfaction of the Landscape Architect.
 - Contractor to layout planting beds, pathways etc. to approval of Landscape Architect prior to any excavation.
 - Drawing may not be used for construction until signed by Landscape Architect as issued for construction.
 - The accuracy of the position of utilities is not guaranteed.
 - Individual utility co. must be contacted for confirmation of utility existence and location prior to digging.
 - This drawing is an instrument of service and requires the permission of the Landscape Architect for use. Copyright is reserved by the Landscape Architect, David M. Lushley.

- REVISION NOTES**
- Revision to loading dock layout. Bike storage and waste / recycling bins are located on the south wall of the loading dock.
 - All trees on Wellington Street changed to Celebration Maples (Acer x freemantii 'Colzani')
 - All trees on Sparks Street changed to Armstrong Gold Maples (Acer rubrum 'Armstrong Gold' (US-KW76))

no.	description	date
4	ISSUED FOR CITY OF OTTAWA SITE COORDINATION (R)	20200302
3	ISSUED FOR CITY OF OTTAWA SITE COORDINATION (R)	20200219
2	ISSUED FOR CITY OF OTTAWA SITE COORDINATION (R)	20200100
1	ISSUED FOR CITY OF OTTAWA SITE COORDINATION	20190805

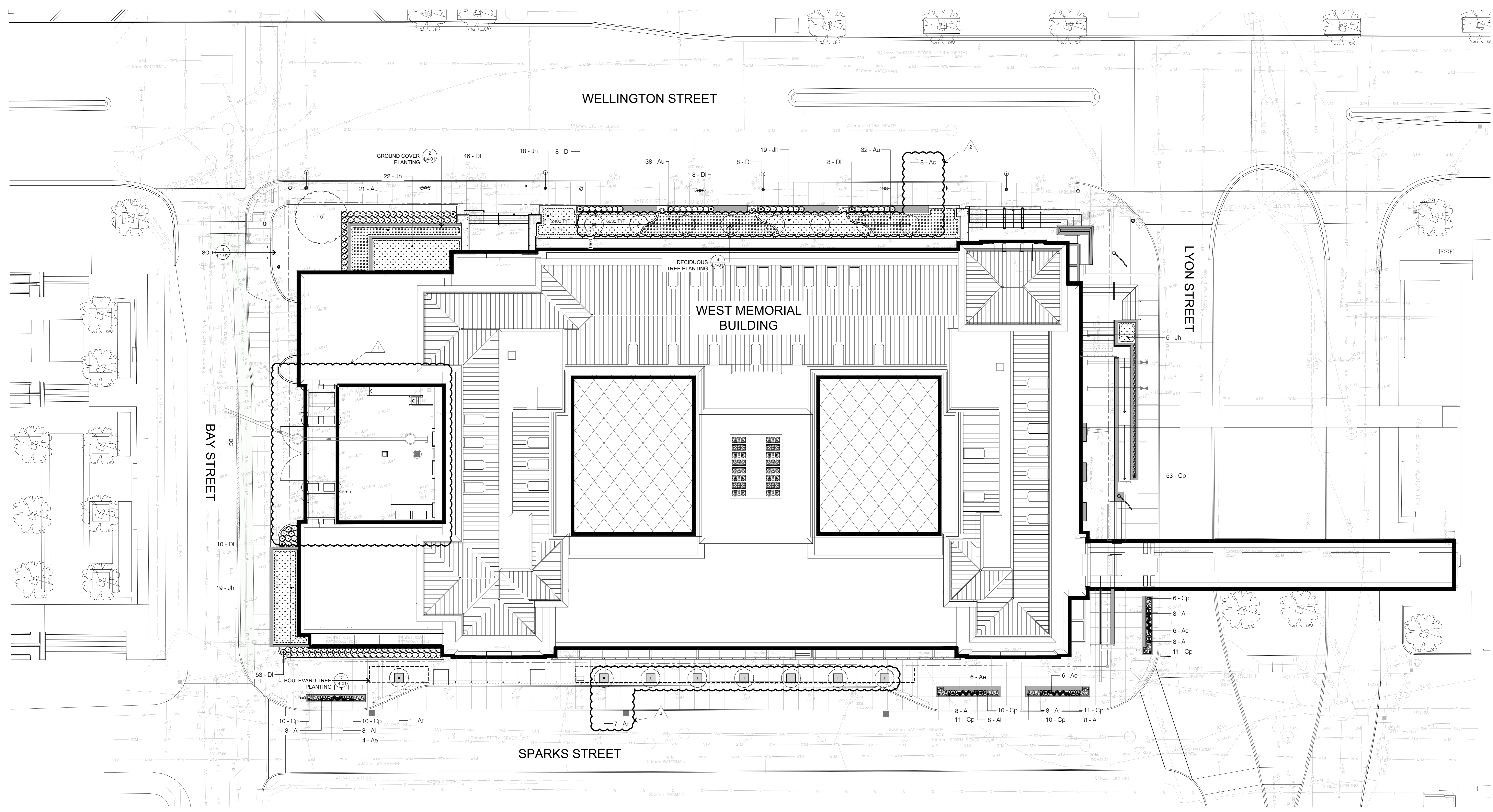
revisions	description	date
A	A detail no. no. du detail	
B	B location drawing no. lieu dessin no.	
C	C drawing no. dessin no.	

project
WEST MEMORIAL BUILDING - REHABILITATION PROJECT
344 Wellington Street, Ottawa, ON

drawing
PLANTING PLAN
dessin

Designed By	RC	Conçu par	
Date	11/30/18	(yyyy/mm/dd)	
Drawn By	JC	Dessiné par	
Date	11/30/18	(yyyy/mm/dd)	
Reviewed By	RC	Examiné par	
Date	11/30/18	(yyyy/mm/dd)	
Approved By	RC	Approuvé par	
Date	11/30/18	(yyyy/mm/dd)	
Tender		Soumission	

Project Manager	Administrateur de projets
Project no.	No. du projet
R.086471.405	
Drawing no.	No. du dessin
L3-01	



L3-01 PLANT LIST

SYMBOL	QTY	BOTANICAL NAME	COMMON NAME	SIZE	COMMENTS
Ac	8	Acer x freemantii 'Colzani'	Celebration Maple	60cm Cal.	Wise Basket
Ar	8	Acer rubrum 'Armstrong Gold' (US-KW76)	Armstrong Gold Maple	60cm Cal.	Wise Basket
SHRUBS					
Au	91	Acetostaphylos oenanthifolia	Bearberry	50cm PT	Planted
Di	141	Diervilla lonicera	Bush Honeycreeper	2 GAL	Planted
Jh	84	Juncus floridanus	Creeper Juniper	45cm, 3 GAL	Planted
GRASSES AND PERENNIALS					
Ae	22	Aster ericoides	Heath Aster	1 GAL	Planted
Al	64	Allium ostenianum	Nodding Onion	1 GAL	Planted
Cp	132	Carex pennsylvanica	Oak Sedge	1 GAL	Planted

- LEGEND:**
- PROPERTY LINE
 - |||| BIKE RACK
 - ⊕ PROPOSED DECIDUOUS TREE
 - ⊕ PROPOSED GROUND COVER / SHRUB PLANTINGS
 - ▬ CONCRETE SEAT WALL WITH PLANTER
 - ⊕ HISTORICAL STREET LIGHT
 - ⊕ HISTORICAL PEDESTRIAN LIGHT
 - ⊕ LIGHT STANDARD
 - ▬ TACTILE PAVING
 - ▬ CONCRETE PAVING
 - - - TREE CELL EXTENTS

Saide Sayah
**SAIDE SAYAH
MANAGER, CENTRAL BRANCH
PLANNING, INFRASTRUCTURE & ECONOMIC
DEVELOPMENT DEPARTMENT, CITY OF OTTAWA**

APPROVED
By Saide Sayah at 12:02 pm, Jun 24, 2020