

Contractor to verify all dimensions & conditions on site and immediately notify the departmental representative of all discrepancies.



- GENERAL NOTES**
- All general site information and conditions compiled from architect's and engineer's plans and surveys.
 - Do not scale this drawing.
 - Report any discrepancies prior to commencing work. No responsibility is born by the Landscape Architect for unknown subsurface conditions.
 - Contractor to check and verify all dimensions on site and report any errors and/or omissions to the Landscape Architect.
 - Reinstate all areas and items damaged as a result of construction activities to the satisfaction of the Landscape Architect.
 - Contractor to layout planting beds, pathways etc. to approval of Landscape Architect prior to any excavation.
 - Drawing may not be used for construction until signed by Landscape Architect as issued for construction.
 - The accuracy of the position of utilities is not guaranteed.
 - Individual utility co. must be contacted for confirmation of utility existence and location prior to digging.
 - This drawing is an instrument of service and requires the permission of the Landscape Architect for use. Copyright is reserved by the Landscape Architect, David M. Lushby.

- REVISION NOTES**
- Revision to loading dock layout. Bike storage and waste / recycling bins are located on the south wall of the loading dock.
 - All trees on Wellington Street changed to Celebration Maples (Acer x freemantii 'Colzani')
 - All trees on Sparks Street changed to Armstrong Gold Maples (Acer rubrum 'Armstrong Gold' (USDA-9076))

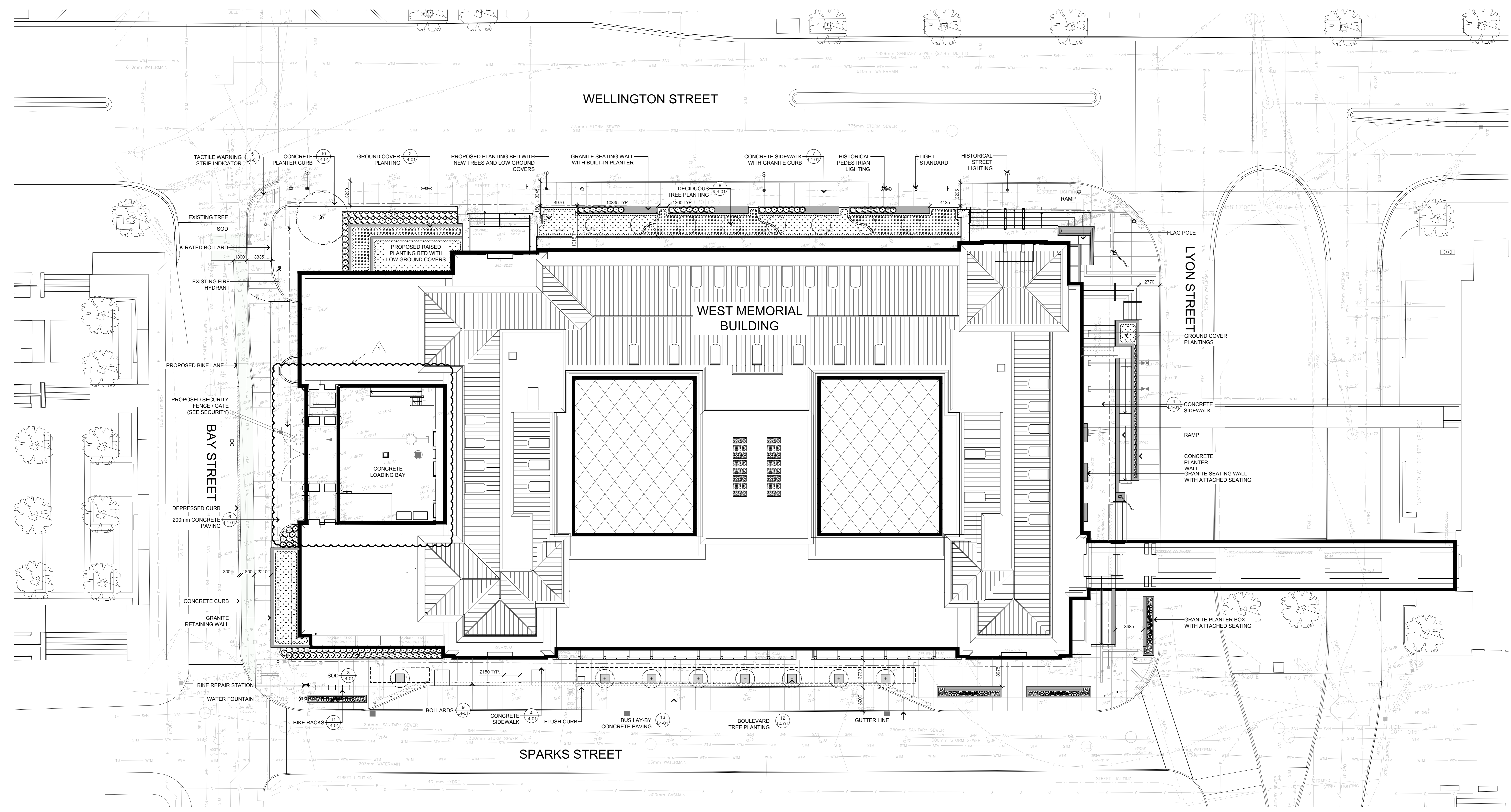
revisions	description	date
4	ISSUED FOR CITY OF OTTAWA SITE COORDINATION #2	20200302
3	ISSUED FOR CITY OF OTTAWA SITE COORDINATION #2	20200219
2	ISSUED FOR CITY OF OTTAWA SITE COORDINATION #1	20200100
1	ISSUED FOR CITY OF OTTAWA SITE COORDINATION	20190805

project
WEST MEMORIAL BUILDING - REHABILITATION PROJECT
344 Wellington Street, Ottawa, ON

LANDSCAPE LAYOUT PLAN

Designed By	RC	Conçu par	Conçu par
Date	11/30/18	(yyyy/mm/dd)	(yyyy/mm/dd)
Drawn By	JC	Dessiné par	Dessiné par
Date	11/30/18	(yyyy/mm/dd)	(yyyy/mm/dd)
Reviewed By	RC	Examiné par	Examiné par
Date	11/30/18	(yyyy/mm/dd)	(yyyy/mm/dd)
Approved By	RC	Approuvé par	Approuvé par
Date	11/30/18	(yyyy/mm/dd)	(yyyy/mm/dd)
Tender		Soumission	Soumission

Project Manager Administrateur de projets
Project no. No. du projet
R.086471.405
Drawing no. No. du dessin
L2-01



LEGEND:

- PROPERTY LINE
- ||| BIKE RACK
- ⊕ PROPOSED DECIDUOUS TREE
- ⊕ PROPOSED SHRUB PLANTINGS
- ▬ CONCRETE SEAT WALL WITH PLANTER
- ⦿ HISTORICAL STREET LIGHT
- ⦿ HISTORICAL PEDESTRIAN LIGHT
- ⦿ LIGHT STANDARD
- ▬ TACTILE PAVING
- ▬ CONCRETE PAVING
- ▭ TREE CELL EXTENTS

Saïde Sayah
SAIDE SAYAH
MANAGER, CENTRAL BRANCH
PLANNING, INFRASTRUCTURE & ECONOMIC
DEVELOPMENT DEPARTMENT, CITY OF OTTAWA

APPROVED
By Saide Sayah at 12:02 pm, Jun 24, 2020

