

Contractor to verify all dimensions & conditions on site and immediately notify the departmental representative of all discrepancies.



- GENERAL NOTES
- All general site information and conditions compiled from architect's and engineer's plans and surveys.
 - Do not scale this drawing.
 - Report any discrepancies prior to commencing work. No responsibility is born by the Landscape Architect for unknown subsurface conditions.
 - Contractor to check and verify all dimensions on site and report any errors and/or omissions to the Landscape Architect.
 - Reinstate all areas and items damaged as a result of construction activities to the satisfaction of the Landscape Architect.
 - Contractor to layout planting beds, pathways etc. to approval of Landscape Architect prior to any excavation.
 - Drawing may not be used for construction until signed by Landscape Architect as issued for construction.
 - The accuracy of the position of utilities is not guaranteed.
 - Individual utility co. must be contacted for confirmation of utility existence and location prior to digging.
 - This drawing is an instrument of service and requires the permission of the Landscape Architect for use. Copyright is reserved by the Landscape Architect, David M. Lushky.

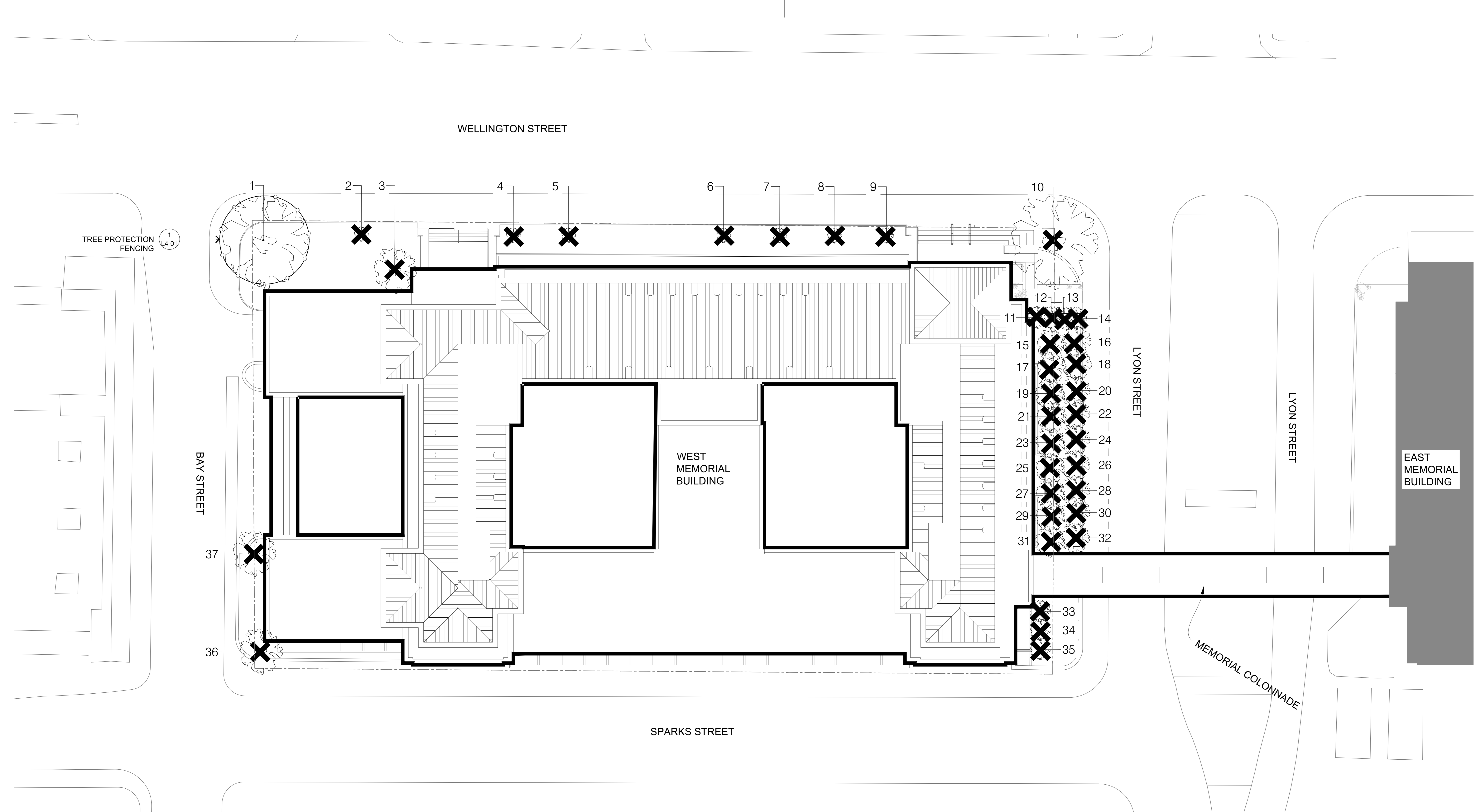
revisions	description	date
3	ISSUED FOR CITY OF OTTAWA SITE COORDINATION #2	2020/01/19
2	ISSUED FOR CITY OF OTTAWA SITE COORDINATION #1	2020/01/02
1	ISSUED FOR CITY OF OTTAWA SITE COORDINATION	2019/04/05

A	detail no.	B	location drawing no. and detail no.	C	drawing no. design no.
A		A		B	C

project WEST MEMORIAL BUILDING - REHABILITATION PROJECT
344 Wellington Street, Ottawa, ON

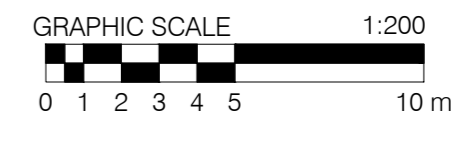
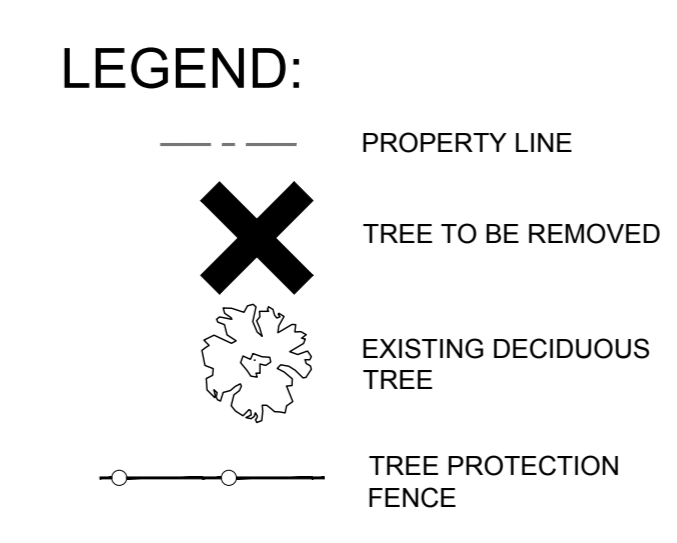
drawing TREE CONSERVATION PLAN

Designed By	RC	Conçu par	
Date	11/30/18	Date	(yyyy/mm/dd)
Drawn By	JC	Dessiné par	
Date	11/30/18	Date	(yyyy/mm/dd)
Reviewed By	RC	Examiné par	
Date	11/30/18	Date	(yyyy/mm/dd)
Approved By	RC	Approuvé par	
Date	11/30/18	Date	(yyyy/mm/dd)
Tender		Soumission	
Project Manager	Administrateur de projets		
Project no.	R.086471.405	No. du projet	
Drawing no.	L1-01	No. du dessin	



NO.	TREE SPECIES	DBH	LOCATION	COMMENTS
1	American Elm / Ulmus americana	45 cm	Good Fair	
2	Cedars of Lebanon / Cedrus libani	6 cm	Good	
3	Chinquapin / Quercus robur / f. nigra	35 cm	Good Fair	
4	Cedars of Lebanon / Cedrus libani	6 cm	Good	
5	Cedars of Lebanon / Cedrus libani	6 cm	Good	
6	Cedars of Lebanon / Cedrus libani	6 cm	Good	
7	Cedars of Lebanon / Cedrus libani	6 cm	Good	
8	Cedars of Lebanon / Cedrus libani	6 cm	Good	
9	Cedars of Lebanon / Cedrus libani	6 cm	Good	
10	American Elm / Ulmus americana	45 cm	Poor - Dead	No Leaves
11	Servicedore / Amelanchier canadensis	7.5 cm	Good Fair	Multi-stemmed
12	Servicedore / Amelanchier canadensis	7.5 cm	Good Fair	Multi-stemmed
13	Servicedore / Amelanchier canadensis	7.5 cm	Good Fair	Multi-stemmed
14	Servicedore / Amelanchier canadensis	7.5 cm	Good Fair	Multi-stemmed
15	Japanees Linden / Sparganium verticillatum	8-12 cm	Good Fair	Multi-stemmed
16	Japanees Linden / Sparganium verticillatum	8-12 cm	Good Fair	Multi-stemmed
17	Japanees Linden / Sparganium verticillatum	8-12 cm	Good Fair	Multi-stemmed
18	Japanees Linden / Sparganium verticillatum	8-12 cm	Good Fair	Multi-stemmed
19	Japanees Linden / Sparganium verticillatum	8-12 cm	Good Fair	Multi-stemmed
20	Japanees Linden / Sparganium verticillatum	8-12 cm	Good Fair	Multi-stemmed
21	Japanees Linden / Sparganium verticillatum	8-12 cm	Good Fair	Multi-stemmed
22	Japanees Linden / Sparganium verticillatum	8-12 cm	Good Fair	Multi-stemmed
23	Japanees Linden / Sparganium verticillatum	8-12 cm	Good Fair	Multi-stemmed
24	Japanees Linden / Sparganium verticillatum	8-12 cm	Good Fair	Multi-stemmed
25	Japanees Linden / Sparganium verticillatum	8-12 cm	Good Fair	Multi-stemmed
26	Japanees Linden / Sparganium verticillatum	8-12 cm	Good Fair	Multi-stemmed
27	Japanees Linden / Sparganium verticillatum	8-12 cm	Good Fair	Multi-stemmed
28	Japanees Linden / Sparganium verticillatum	8-12 cm	Good Fair	Multi-stemmed
29	Japanees Linden / Sparganium verticillatum	8-12 cm	Good Fair	Multi-stemmed
30	Japanees Linden / Sparganium verticillatum	8-12 cm	Good Fair	Multi-stemmed
31	Japanees Linden / Sparganium verticillatum	8-12 cm	Good Fair	Multi-stemmed
32	Japanees Linden / Sparganium verticillatum	8-12 cm	Good Fair	Multi-stemmed
33	Japanese Honeylocust / Lonchocarpus tomentosus	4.5 cm	Good Fair	Multi-stemmed
34	Japanese Honeylocust / Lonchocarpus tomentosus	4.5 cm	Good Fair	Multi-stemmed
35	Japanese Honeylocust / Lonchocarpus tomentosus	4.5 cm	Good Fair	Multi-stemmed
36	Japanees Linden / Sparganium verticillatum	8-12 cm	Good	Multi-stemmed
37	Japanees Linden / Sparganium verticillatum	8-12 cm	Good	Multi-stemmed

NO.	TREE SPECIES	DBH	LOCATION	COMMENTS
1	American Elm / Ulmus americana	45 cm	Good Fair	



SAIDE SAYAH
MANAGER, CENTRAL BRANCH
PLANNING, INFRASTRUCTURE & ECONOMIC
DEVELOPMENT DEPARTMENT, CITY OF OTTAWA

APPROVED
By Saide Sayah at 12:02 pm, Jun 24, 2020