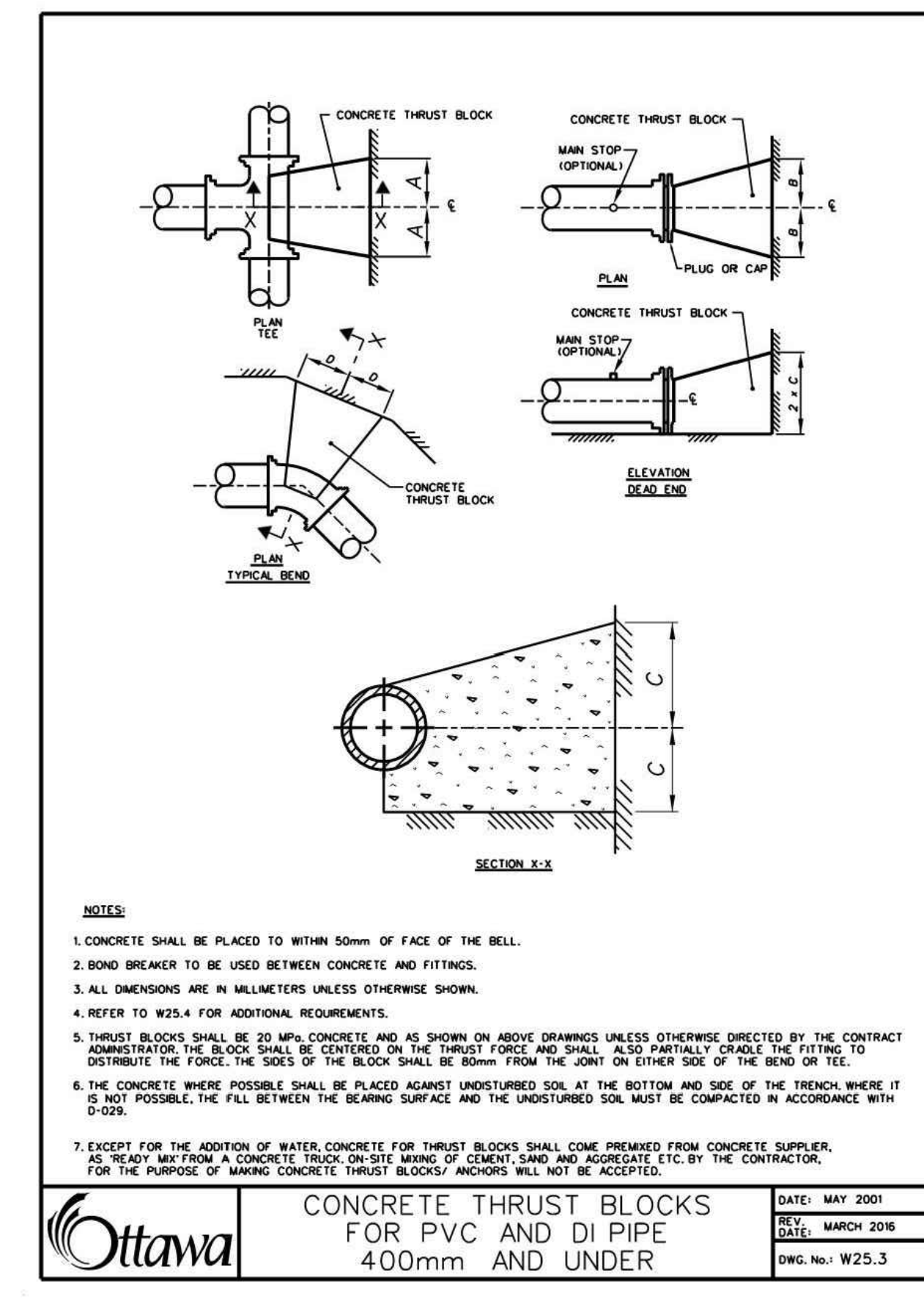
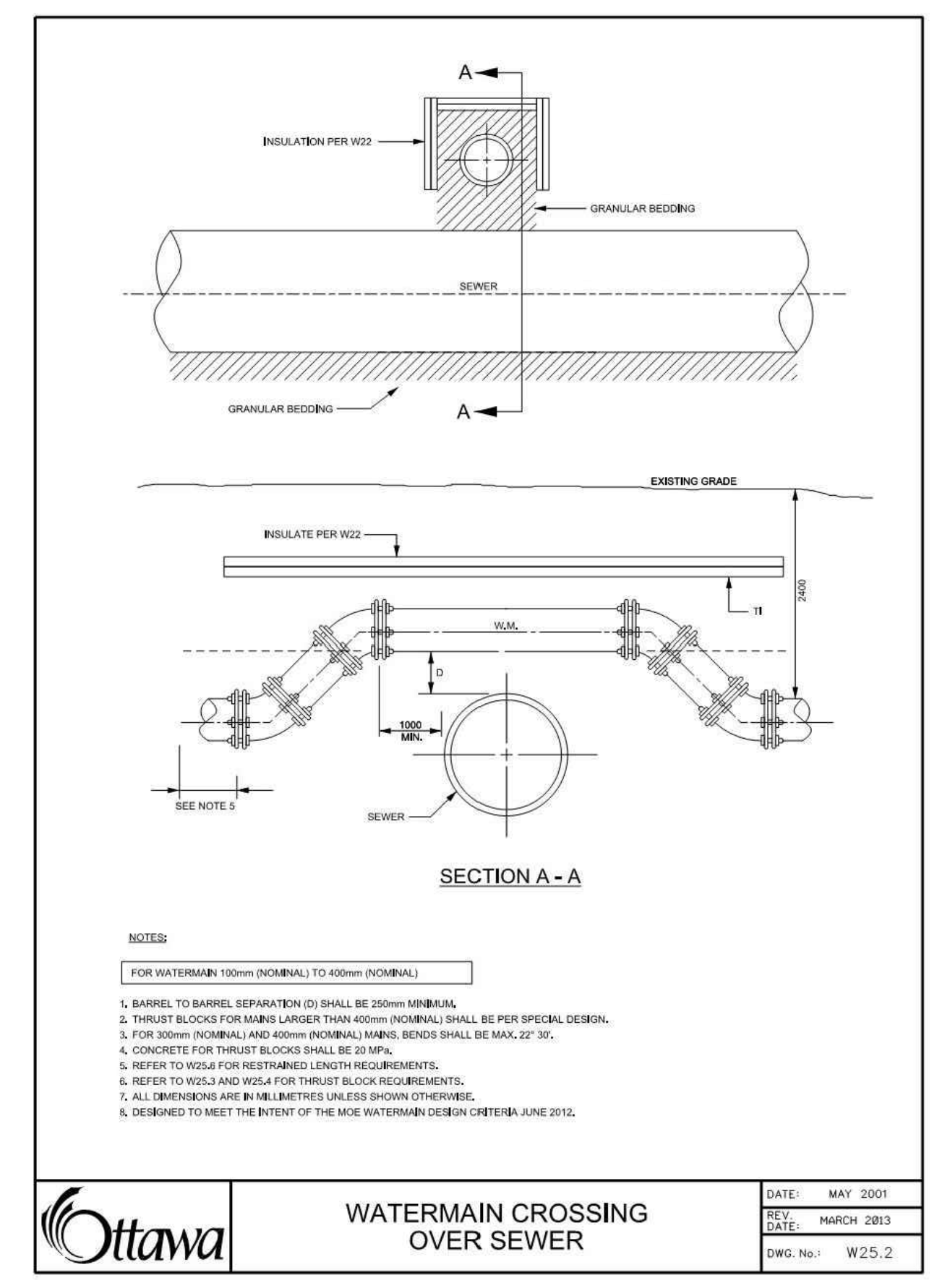
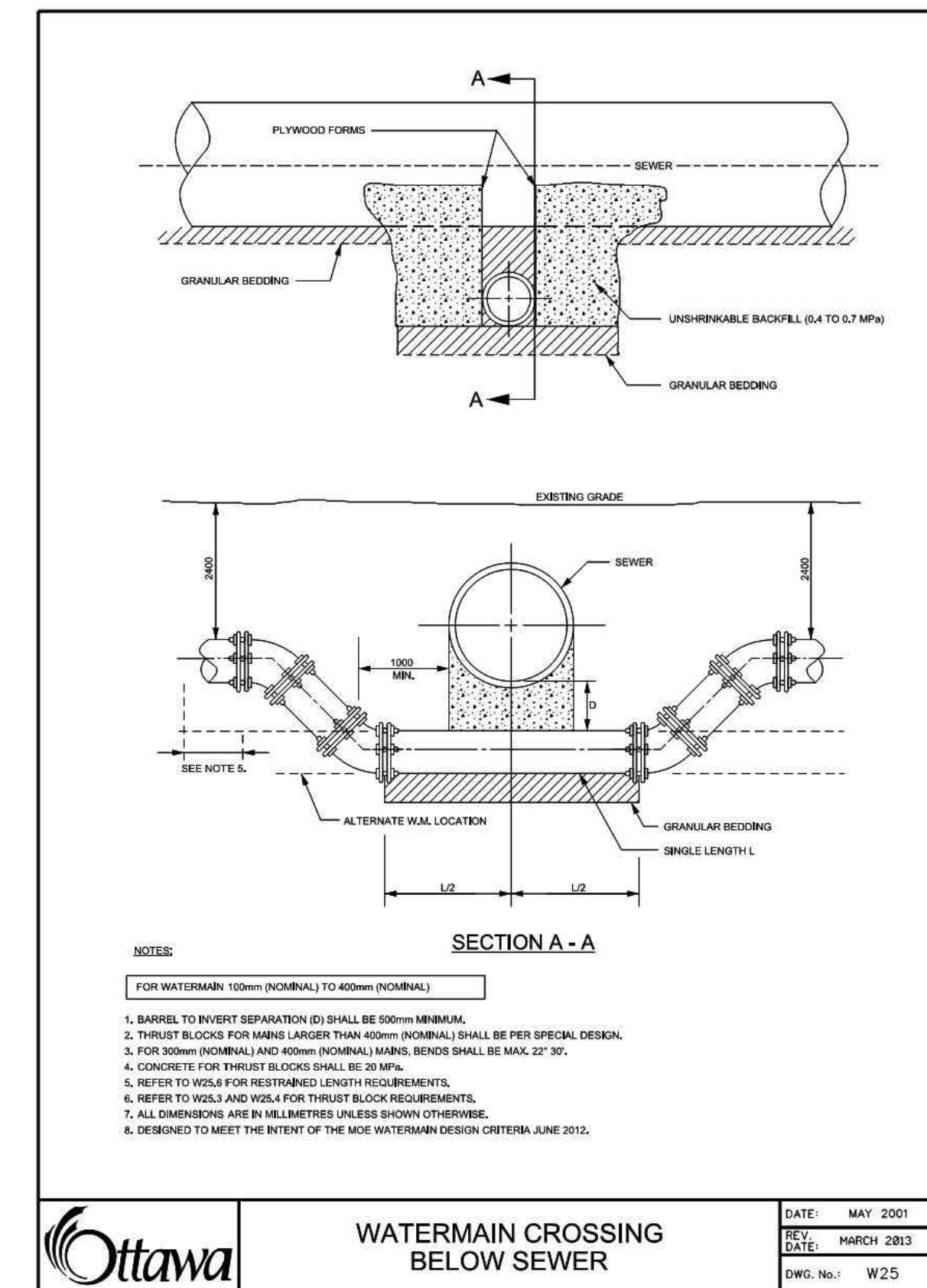
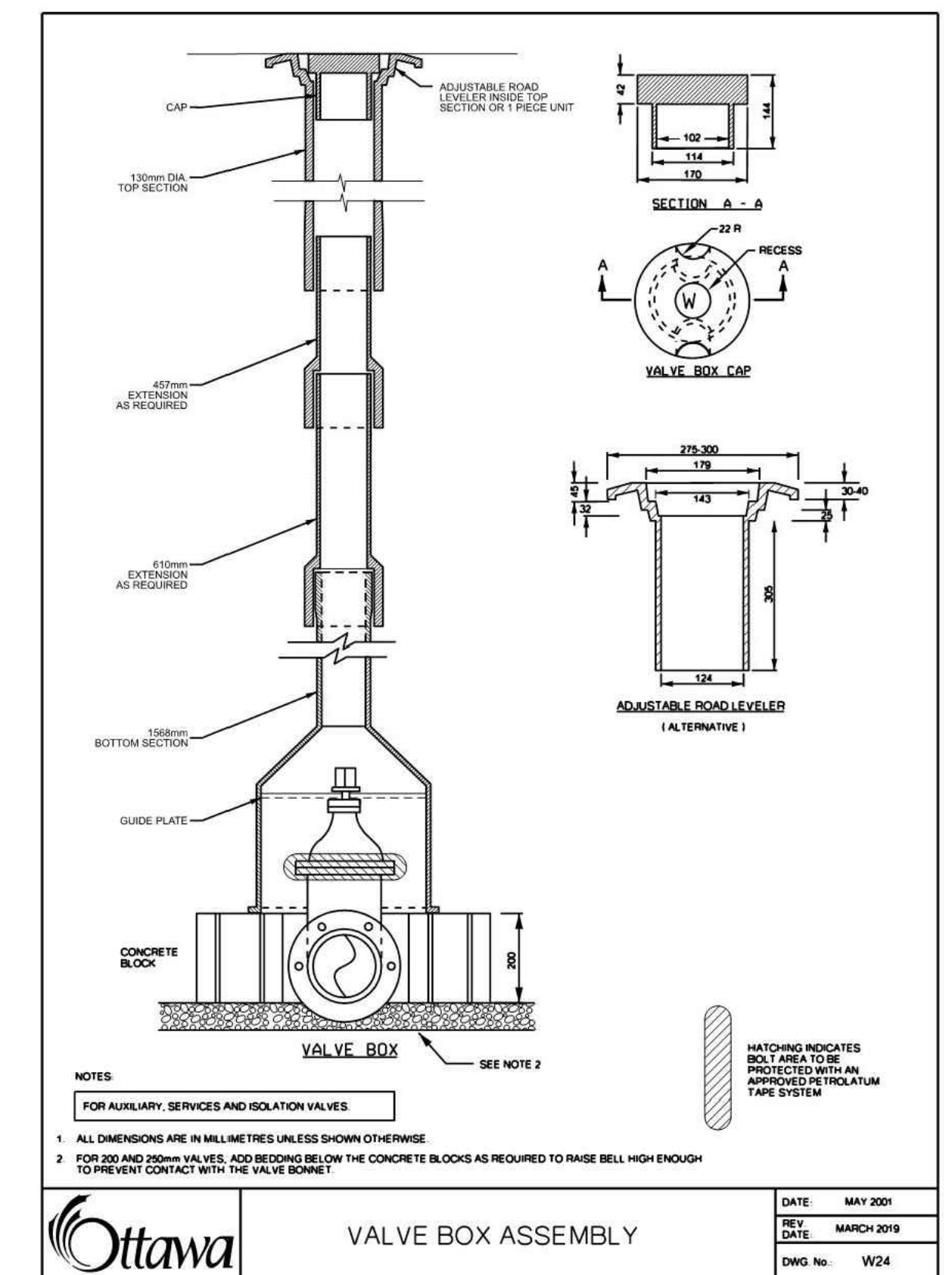
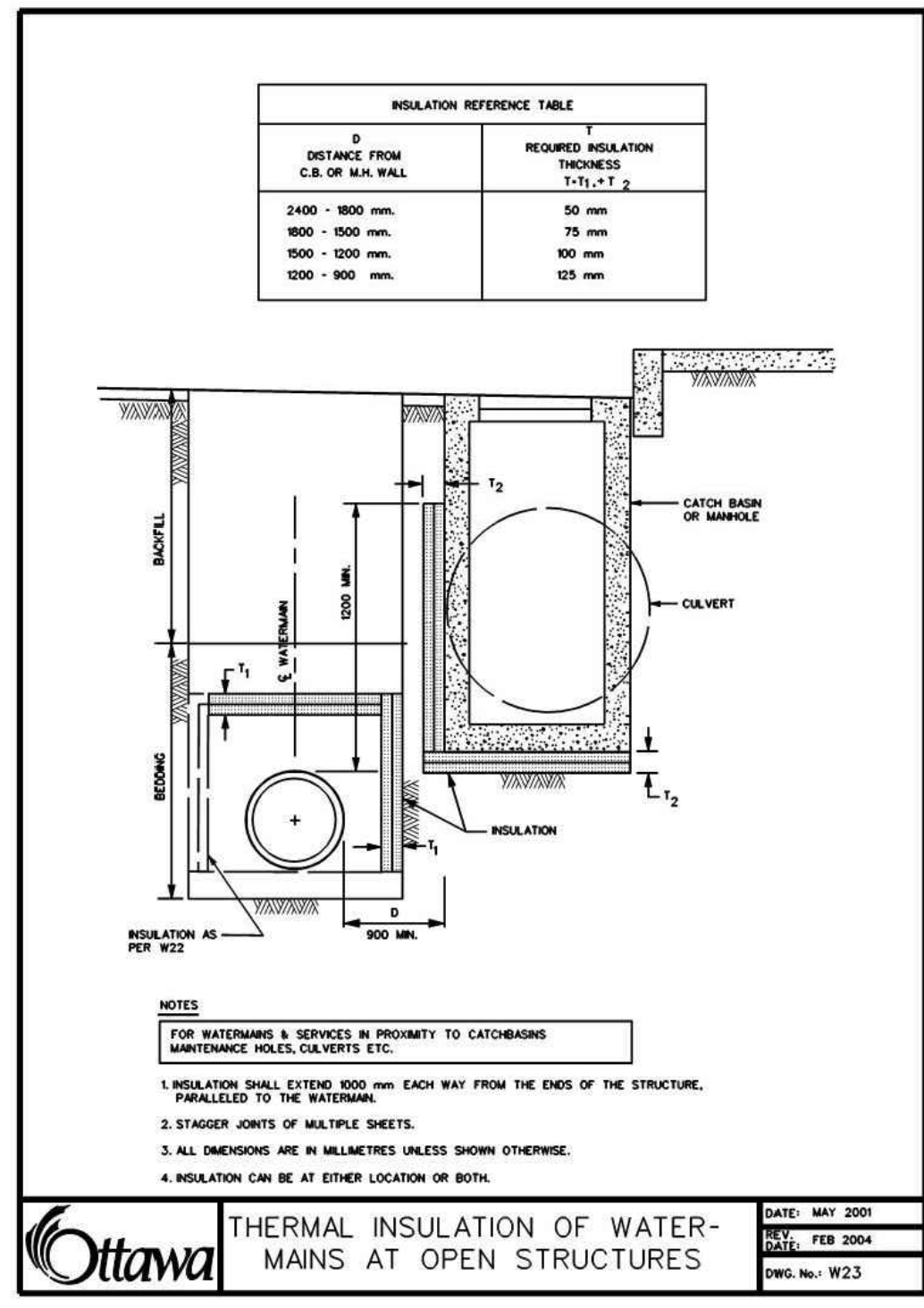
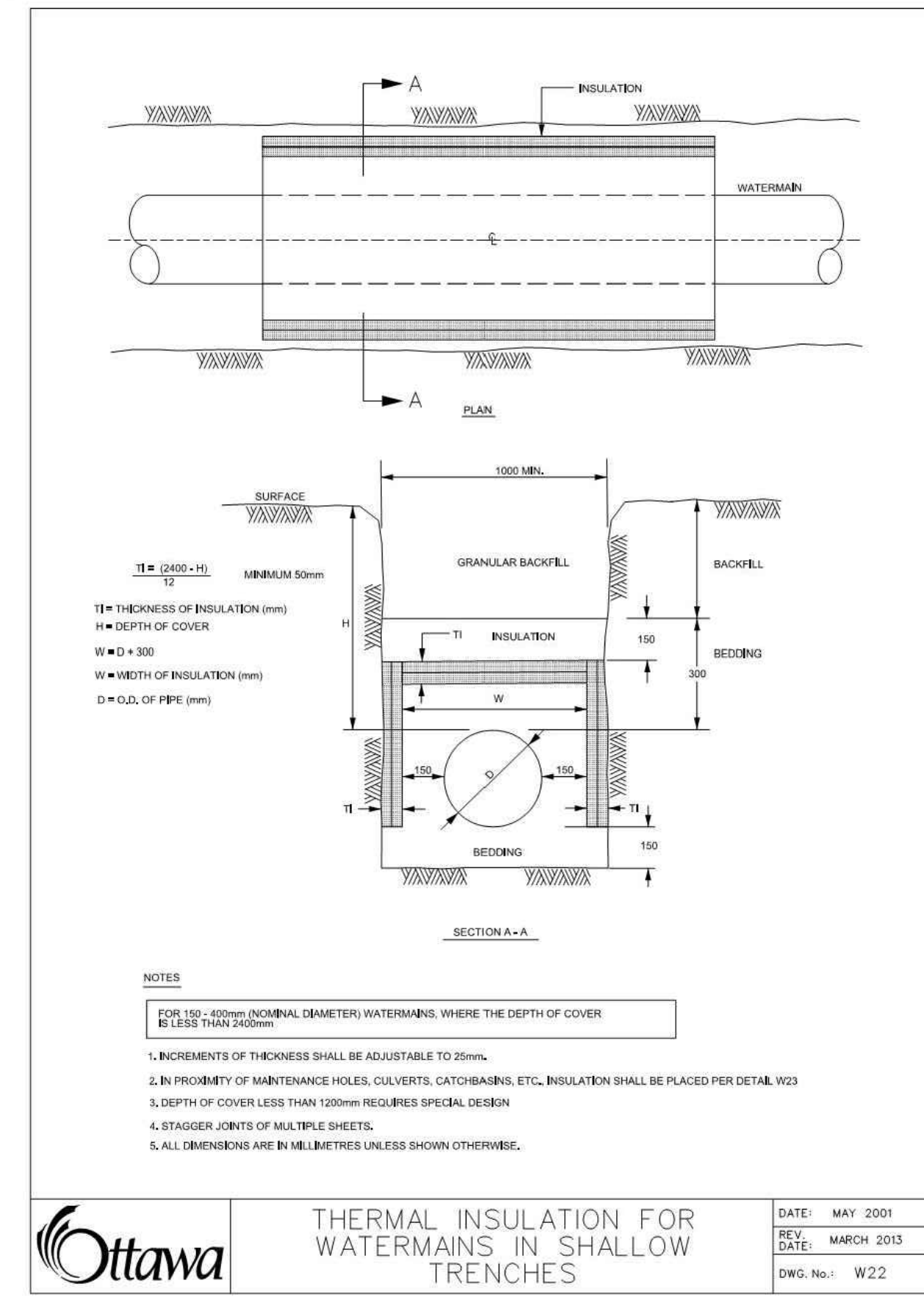


SAIDE SAYAH
MANAGER, CENTRAL BRANCH
PLANNING, INFRASTRUCTURE & ECONOMIC
DEVELOPMENT DEPARTMENT, CITY OF OTTAWA

APPROVED
By Saide Sayah at 12:02 pm, Jun 24, 2010



SOIL DESCRIPTION: VERY FINE SANDS, SANDY CLAYS, CLAYS
SOILS WITH TYPICAL BEARING STRENGTH OF 100 TO 150 KPa

PIPE DIAMETER	DIMENSION NOTED ON W25.3			
	A	B	C	D
100	250	250	200	300
152	400	400	250	300
203	550	550	300	450
254	650	650	400	500
305	800	800	450	600
406	1050	1050	600	800

SOIL DESCRIPTION: SILTY SAND, GRAVELS OR CLAYEY SAND GRAVEL
SOILS WITH TYPICAL BEARING STRENGTH OF 200 TO 250 KPa

PIPE DIAMETER	DIMENSION NOTED ON W25.3			
	A	B	C	D
100	200	200	150	150
152	250	250	200	200
203	350	350	250	270
254	450	450	300	350
305	500	500	350	400
406	750	750	400	600

SOIL DESCRIPTION: SANDS, GRAVELS AND GRAVEL SAND MIXTURES
SOILS WITH TYPICAL BEARING STRENGTH OF 300 KPa AND OVER

PIPE DIAMETER	DIMENSION NOTED ON W25.3			
	A	B	C	D
100	150	150	150	150
152	200	200	200	200
203	300	300	300	230
254	400	400	250	270
305	450	450	300	300
406	650	650	350	400

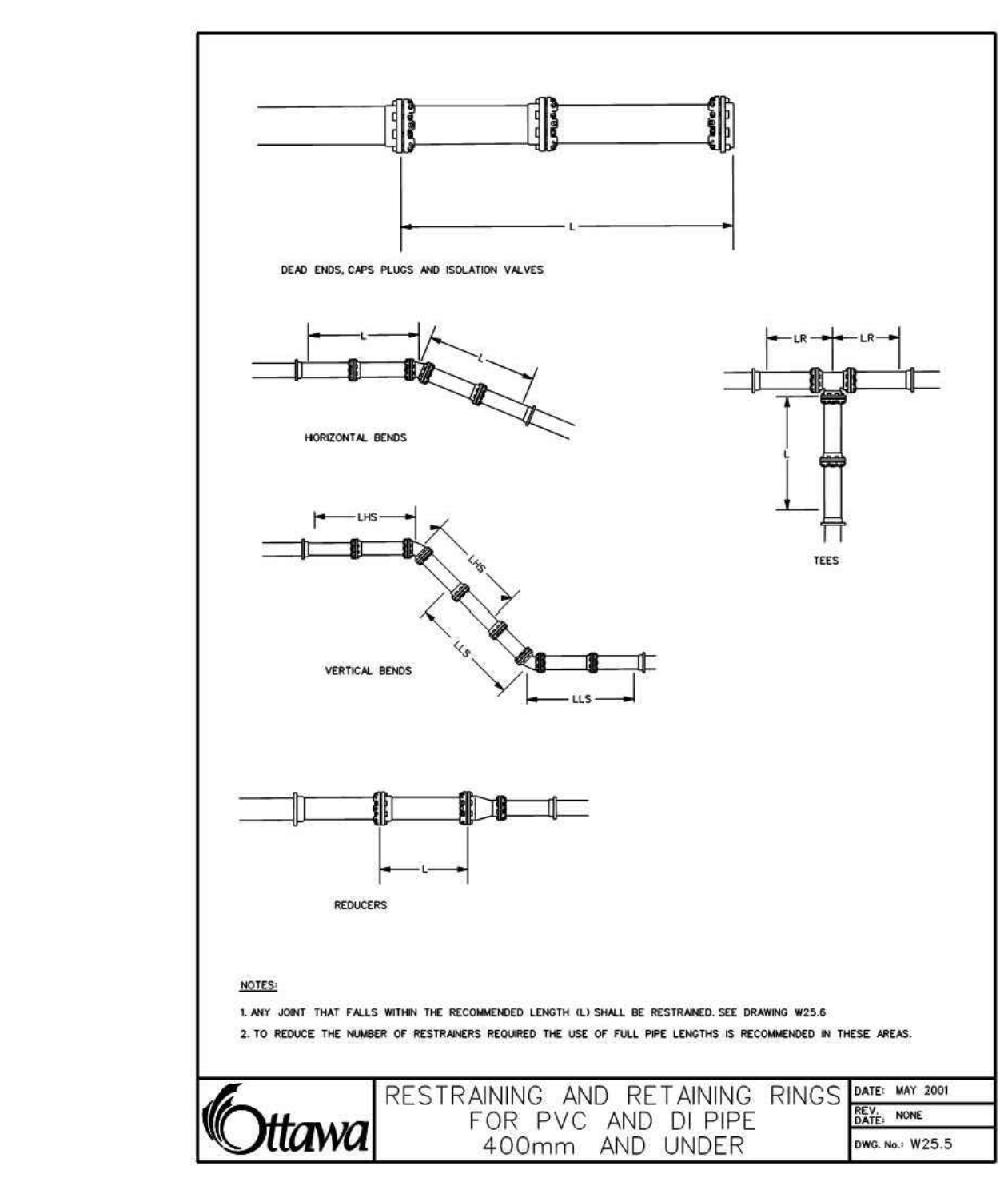


TABLE OF RESTRAINED LENGTHS FOR DI AND PVC WATERMAIN PIPE IN STANDARD GRANULAR 'A' EMBEDMENT IN SOILS OF BEARING CAPACITY OF 100 KPa AND OVER

REDUCERS	LARGER DIAMETER SIDE (TO BE RESTRAINED)					
	100mm	150mm	200mm	250mm	300mm	400mm
100mm	N/A	3	6	8	10	14
150mm	N/A	N/A	4	6	9	13
200mm	N/A	N/A	N/A	3	6	11
250mm	N/A	N/A	N/A	N/A	4	9
300mm	N/A	N/A	N/A	N/A	N/A	7
400mm	N/A	N/A	N/A	N/A	N/A	N/A

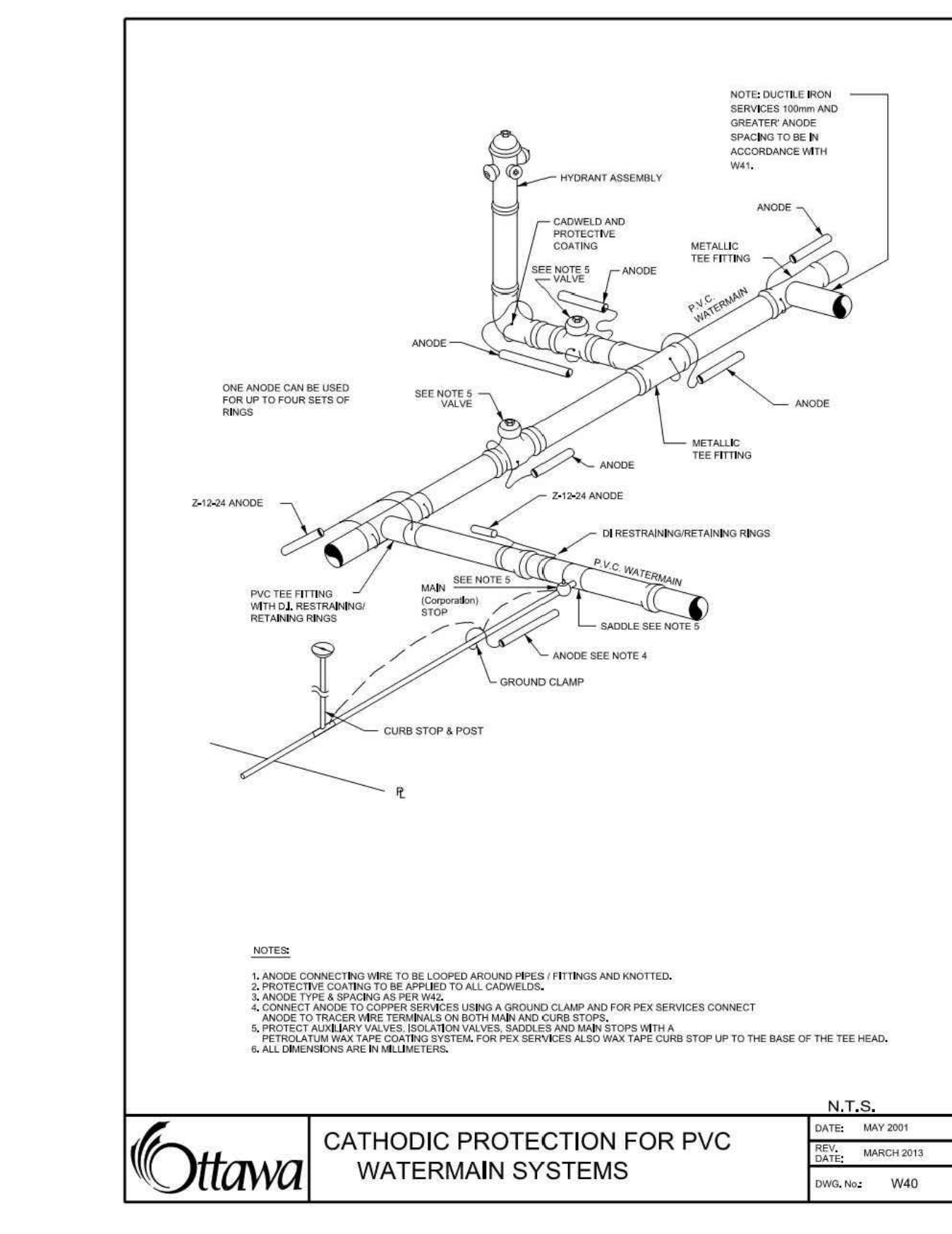
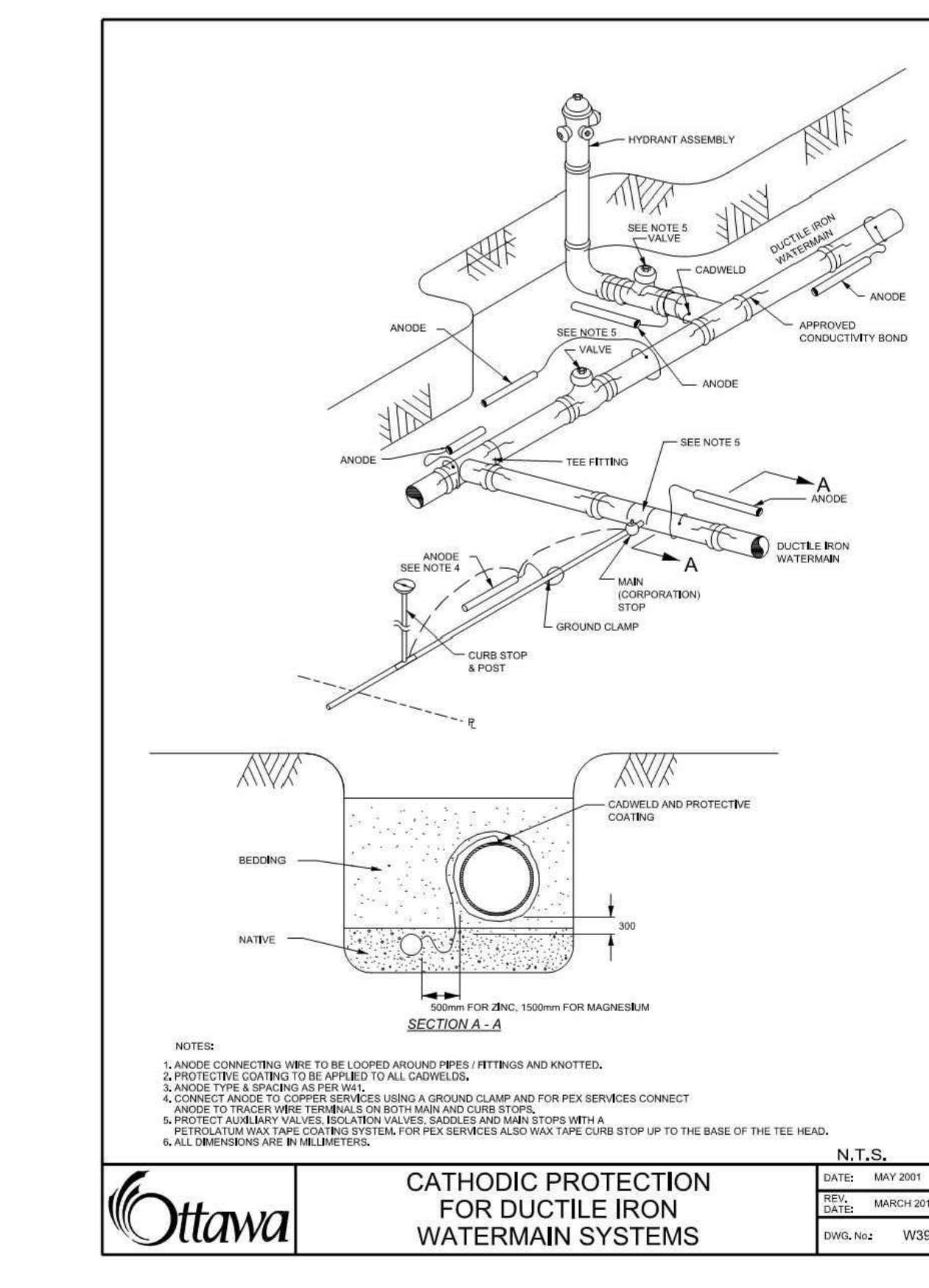
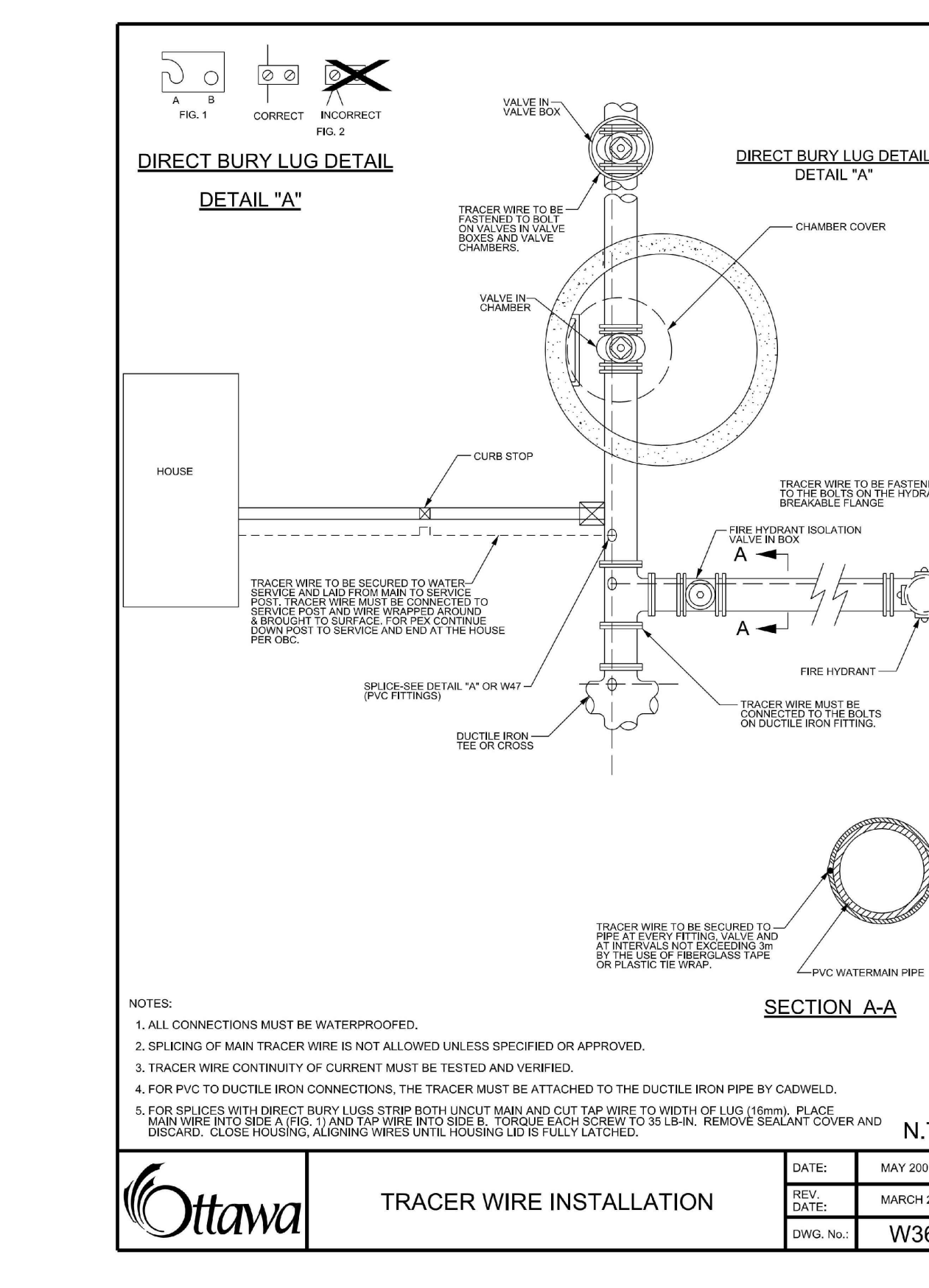
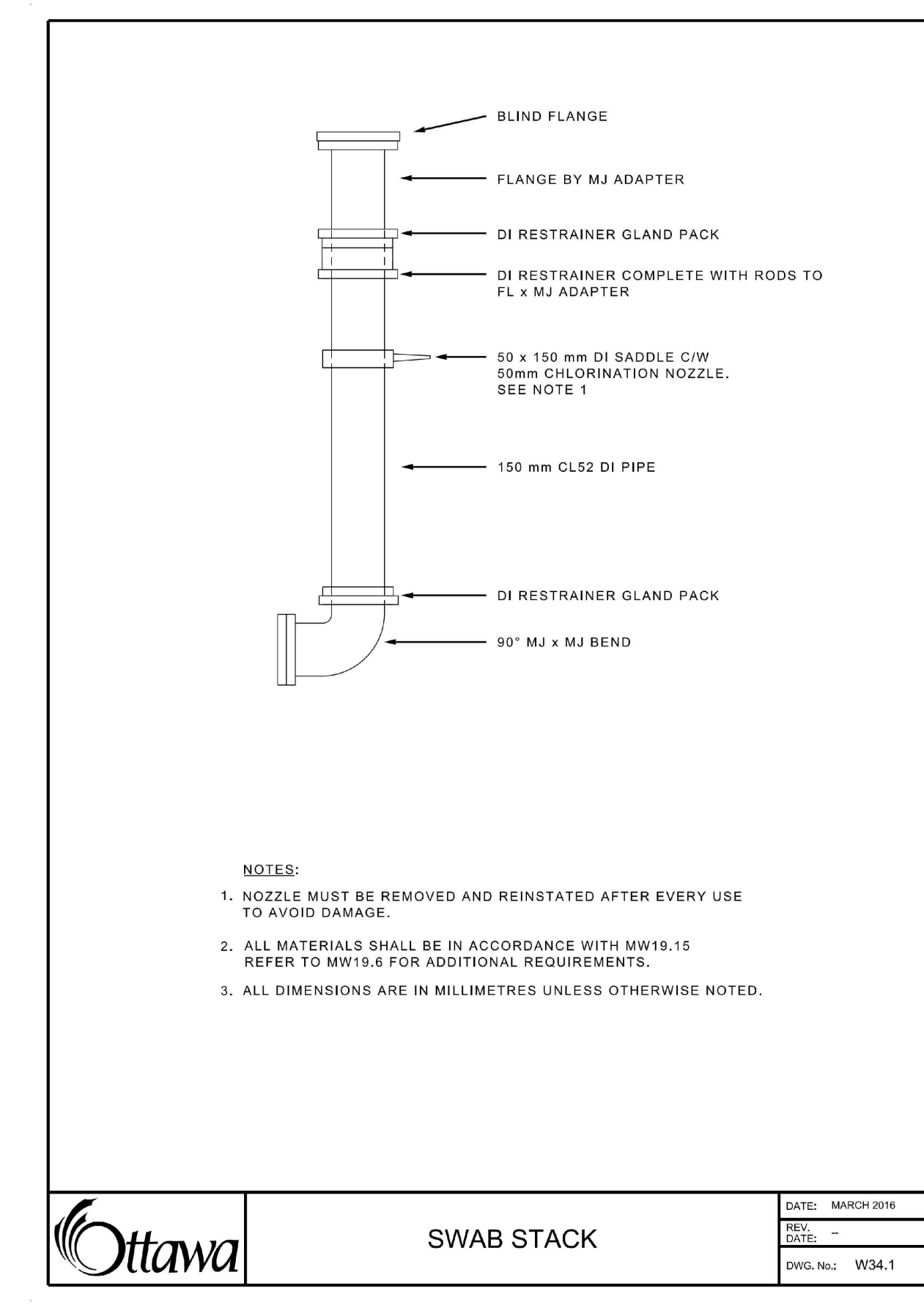
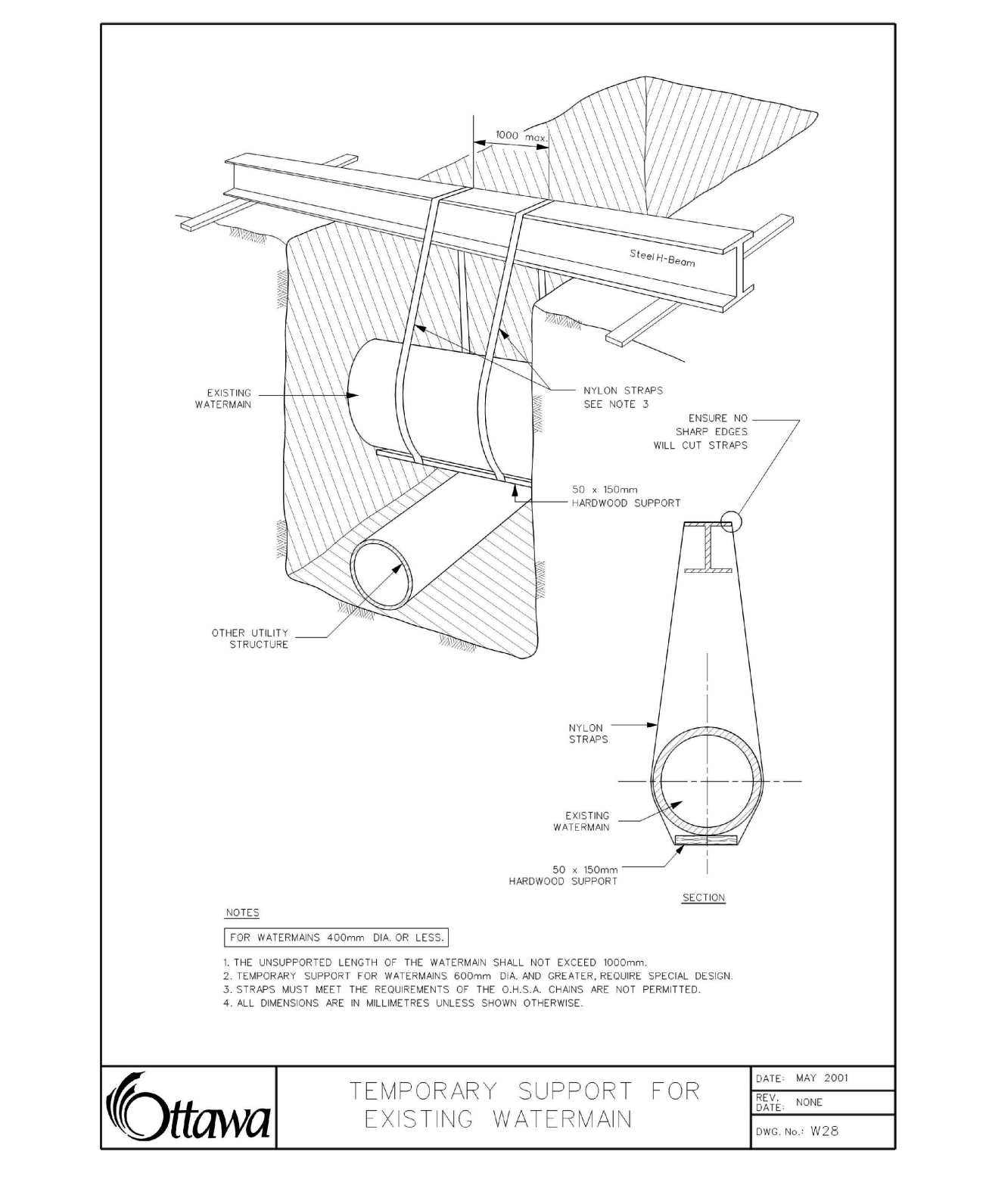
PIPE DIAMETER: 100mm, 150mm, 200mm, 250mm, 300mm, 400mm

DEAD ENDS, CAPS, PLUGS, VALVES
BEFORE CAPS AND EITHER SIDE OF VALVES - L: 5, 6, 9, 10, 12, 16

VERTICAL BENDS
LENGTH HIGH SIDE - LHS: 3, 4, 5, 6, 7, 9
LENGTH LOW SIDE - LLS: 1.5, 2, 2.5, 3, 3.5, 4.5

TIEES
LENGTH ALONG THE BRANCH - L: 1, 1, 1, 1, 1, 1
LENGTH ALONG THE RUN - LR: 3, 3, 3, 3, 3, 3

HORIZONTAL BENDS
11.25, 22.5, AND 45 DEGREE BENDS: 1, 1.5, 1.5, 2, 2, 2.5



Contractor to verify all dimensions & conditions on site and immediately notify the departmental representative of all discrepancies.

ISSUED FOR CITY OF OTTAWA SITE COORDINATION R1: 2020/01/20

revisions	description	date
A	Detail no. du détail	
B	Revised drawing no. sur dessin no.	
C	Detail no. du détail	

project WEST MEMORIAL BUILDING REHABILITATION PROJECT

344 WELLINGTON, OTTAWA, ON

drawing DETAILS (2 OF 3)

Designed By: Conqu par
Date: 2018/12/14 (yyyy/mm/dd)
Drawn By: NI Dessiné par
Date: 2018/12/14 (yyyy/mm/dd)
Reviewed By: EE Examiné par
Date: 2018/12/14 (yyyy/mm/dd)
Approved By: Approver (yyyy/mm/dd)
Date: 2018/12/14 (yyyy/mm/dd)
Tender: Tender Soumission
Project Manager: Administrateur de projets
Project no.: No. du projet
R.086471.405
Drawing no.: No. du dessin
C-003