

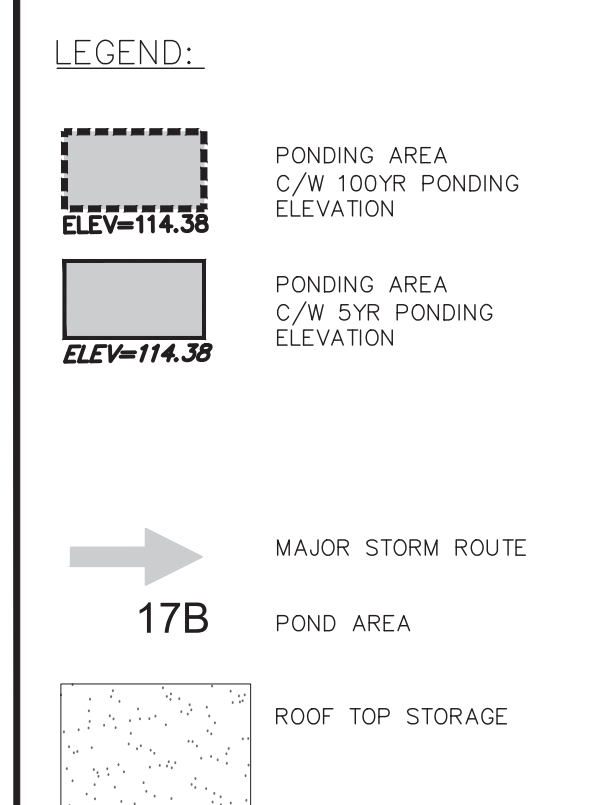
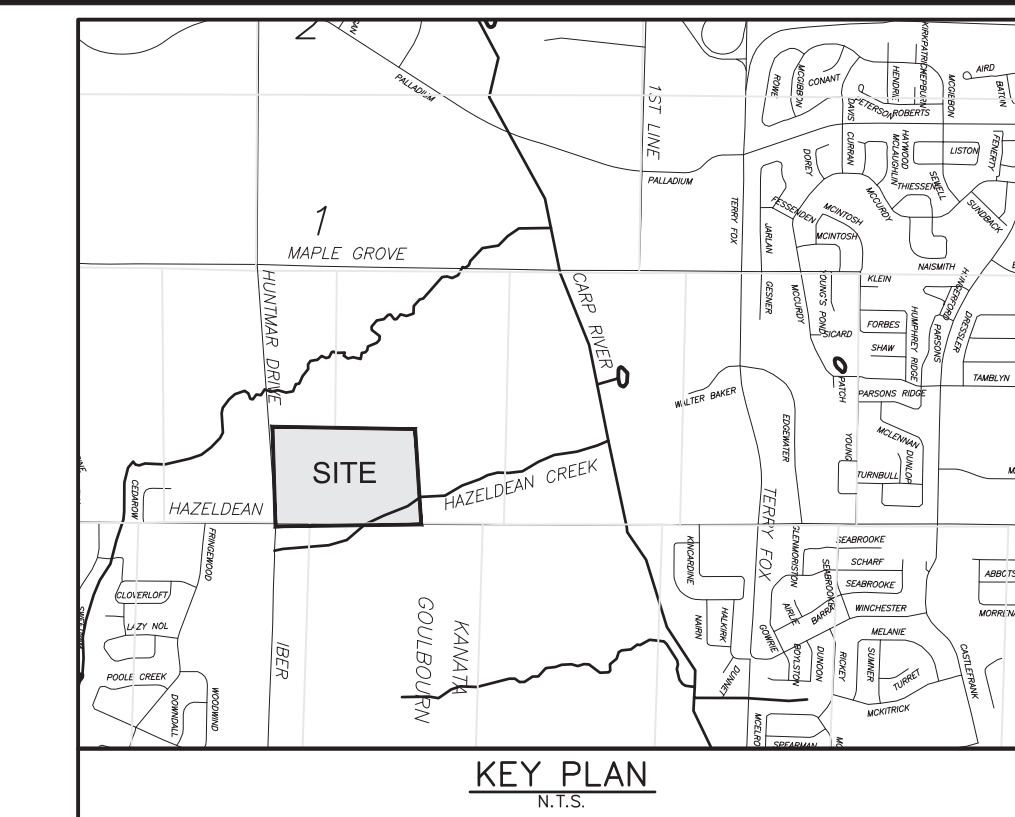
Pond ID#	area (sqm)	depth (m)	volume (m3)
1A	481.00	0.25	40.08
1B	814.00	0.25	67.83
1C	201.00	0.70	46.90
2A	36.00	0.07	0.84
2B	22.00	0.07	0.51
3A	38.00	0.07	0.89
3B	50.00	0.07	1.17
5A	468.00	0.30	46.80
5B	383.00	0.30	38.30
5C	336.00	0.30	33.60
6A	40.00	0.07	0.93
6B	40.00	0.07	0.93

Pond ID#	area (sqm)	depth (m)	volume (m3)
8A	794.17	0.30	79.42
8B	284.43	0.25	23.70
8C	127.03	0.25	10.59
8D	68.25	0.10	2.28
9A	40.00	0.07	0.93
9B	40.00	0.07	0.93
11A	150.00	0.15	7.50
11B	108.00	0.15	5.40
12	990.13	0.25	82.51
14A	1343.36	0.25	111.95
14B	140.66	0.25	11.72
15A	296.00	0.15	14.80
15B	1000.00	0.30	100.00
15C	1055.00	0.30	105.50
15D	1000.00	0.30	100.00

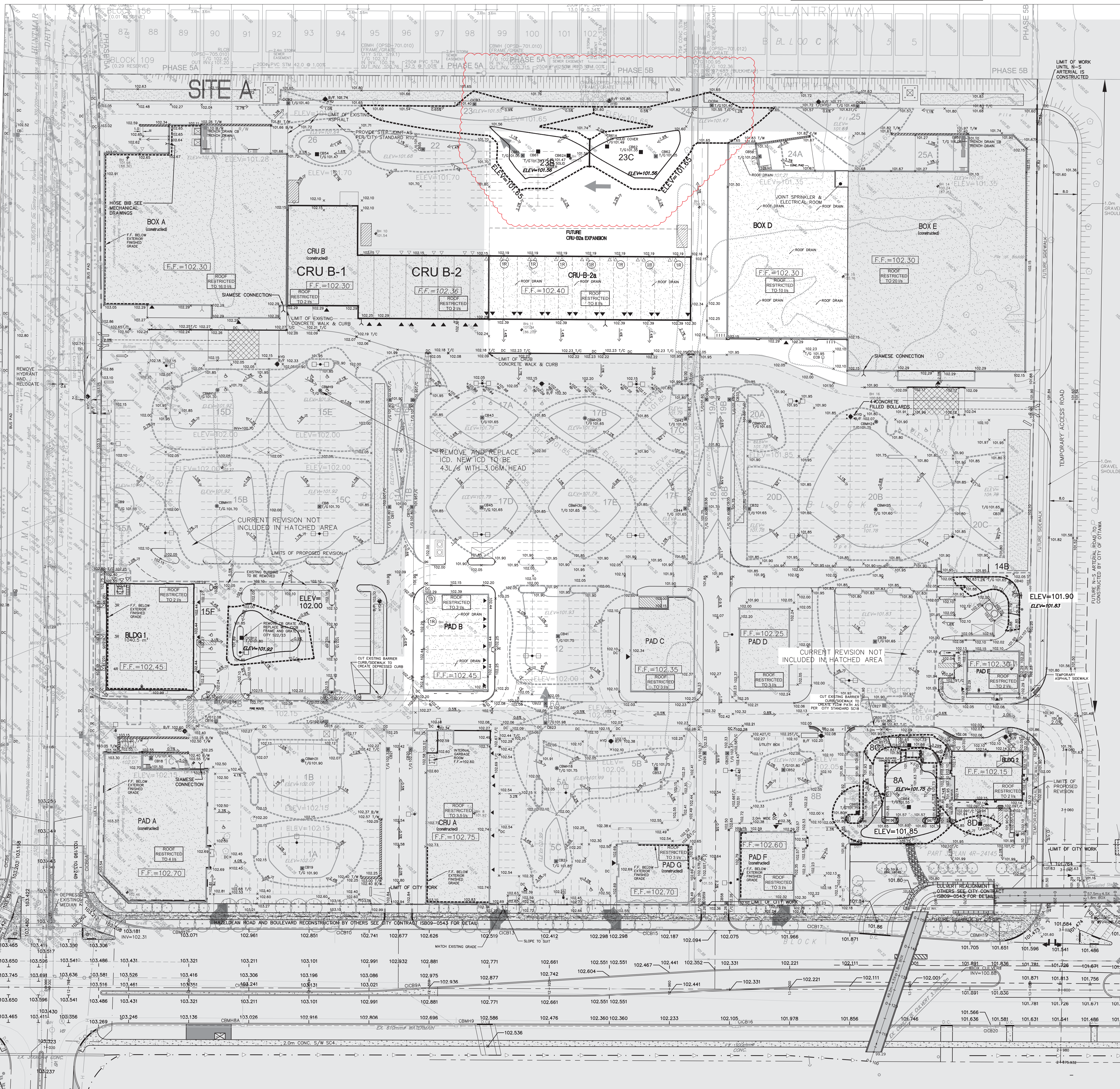
Pond ID#	area (sqm)	depth (m)	volume (m3)
15E	900.00	0.30	90.00
15F	463.98	0.20	30.93
16A	166.37	0.15	8.32
16B	204.14	0.15	10.21
17A	481.30	0.20	32.09
17B	397.16	0.20	26.48
17C	278.03	0.20	18.54
17D	739.91	0.20	49.33
17E	785.48	0.20	52.37
17F	369.62	0.20	24.64
18A	156.00	0.25	13.00
18B	156.00	0.25	13.00

Pond ID#	area (sqm)	depth (m)	volume (m3)
19A	155.56	0.25	12.96
19B	187.08	0.25	15.59
20A	217.96	0.20	14.53
20D	468.54	0.20	31.24
20B	2029.44	0.25	169.12
20C	523.33	0.20	34.89
21	191.58	0.25	15.97
21A	60.88	0.23	4.67
22	360.00	0.25	30.00
23	562.42	0.25	46.87
23B	535.86	0.30	53.59
23C	558.21	0.30	55.82

Pond ID#	area (sqm)	depth (m)	volume (m3)
24	489.88	0.25	40.82
24A	74.40	0.30	7.44
25	584.32	0.17	33.11
25A	121.23	0.30	12.12
26	226.00	0.23	17.33



Pond ID#	area (sqm)	depth (m)	volume (m3)
1A	277.44	0.17	15.72
1B	453.56	0.17	25.70
1C	51.30	0.62	10.60
2A	36.00	0.07	0.84
2B	22.00	0.07	0.51
3A	38.00	0.07	0.89
3B	50.00	0.07	1.17
5A	228.04	0.24	18.24
5B	245.31	0.24	19.62
5C	96.65	0.14	4.51
6A	40.00	0.07	0.93
6B	40.00	0.07	0.93
8A	438.40	0.20	29.23
8B	153.16	0.18	9.19
8C	44.91	0.15	2.25
9A	40.00	0.07	0.93
9B	40.00	0.07	0.93
11A	134.63	0.13	5.83
11B	85.33	0.13	3.70
12	536.13	0.18	32.17
14A	665.69	0.18	39.94
14B	91.87	0.18	5.51
15A	62.14	0.22	1.45
15B	644.98	0.22	47.30
15C	696.50	0.22	51.08
15D	538.48	0.22	39.49
15E	603.30	0.22	44.24
15F	253.74	0.12	10.15
16A	135.45	0.13	5.87
16B	163.52	0.13	7.09
17A	220.60	0.15	11.03
17B	188.99	0.15	9.45
17C	111.16	0.15	5.56
17D	358.98	0.15	17.95
17E	350.76	0.15	17.54
17F	173.44	0.15	8.67
18A	115.03	0.14	5.37
18B	94.54	0.14	4.41
19A	66.62	0.14	3.11
19B	80.81	0.14	3.77
20A	88.84	0.13	3.31
20B	1184.13	0.18	71.05
20C	278.87	0.13	12.08
20D	210.89	0.13	9.14
21	191.58	0.25	15.97
21A	35.32	0.15	1.77
22	286.07	0.23	21.93
23	172.34	0.15	8.62
23B	304.74	0.21	21.33
23C	305.35	0.21	21.37
24	49.05	0.07	1.14
24A	33.91	0.16	1.81
25	234.71	0.11	8.61
25A	58.10	0.20	3.87
26	132.00	0.17	7.48



Collette Gorni
COLETTE GORNI
 PLANNER I
 PLANNING, INFRASTRUCTURE & ECONOMIC
 DEVELOPMENT DEPARTMENT, CITY OF OTTAWA

APPROVED
 By Collette Gorni at 9:21 am, Aug 10, 2020

No.	REVISIONS	By	Date
24	REVISED 'STORAGE' CELLS PER	DCY	20.05.15
23	REVISED AS PER CITY	DCY	20.04.30
22	REVISED AS PER CITY	DCY	20.03.27
21	REVISED AS PER CITY	DCY	19.12.20
20	REVISED SPA CRU B-3, PAD	DCY	19.08.29
19	ISSUED FOR CONSTRUCTION	DCY	18.04.06
18	ISSUED FOR TENDER	DCY	18.01.15
17	ISSUED AS PER CITY COMMENTS	DCY	17.11.23
16	ISSUED FOR SPA	DCY	17.11.02
15	ISSUED AS PER SITE PLAN	DCY	17.07.07
14	REVISED AS PER CITY COMMENTS	DCY	17.06.23
13	REVISED BLD 2 & PAD E	DCY	17.02.14
12	REVISED AS PER CITY COMMENTS	DCY	16.08.02
11	SPA BLDG 1 & 2	DCY	16.03.07
10	REVISED AS PER SITE PLAN	DCY	14.11.03
9	SPA	DCY	14.09.09
8	REVISED AS PER SITE PLAN	DCY	14.08.08
7	REVISED AS PER CITY	DCY	14.07.31
6	REVISED DOLLAR & CRU	DCY	14.06.03
5	REVISED FOR PAD F	DCY	12.11.16
4	REVISED SPRINKLER ROOM	DCY	12.03.09
3	REVISED PER CITY COMMENTS	DCY	12.02.22
2	REVISED SITE PLAN PH1 & PH2	DCY	11.11.24
1	ISSUED FOR APPROVAL	DCY	11.10.27

**NORTH AMERICAN
 DEVELOPMENT GROUP**
 IBI
 GROUP
 333 Preston Street
 Tower 1, Suite 400
 Ottawa, Ontario
 Canada K1S 5N4
 Tel: (613) 525-1311
 Fax: (613) 525-9868

Project Title
**NORTH AMERICAN
 HAZELDEAN & HUNTMAR
 OTTAWA, ONT.**
 Project No.
20200515
 Drawing Title
**PONDING PLAN
 PHASE 1 & 2**

Scale
 1:500
 Design
 D.G.Y.
 Date
 OCTOBER 2011
 Drawn
 E.H.
 Checked
 D.G.Y.
 Project No.
 10113
 Drawing No.
 C-402