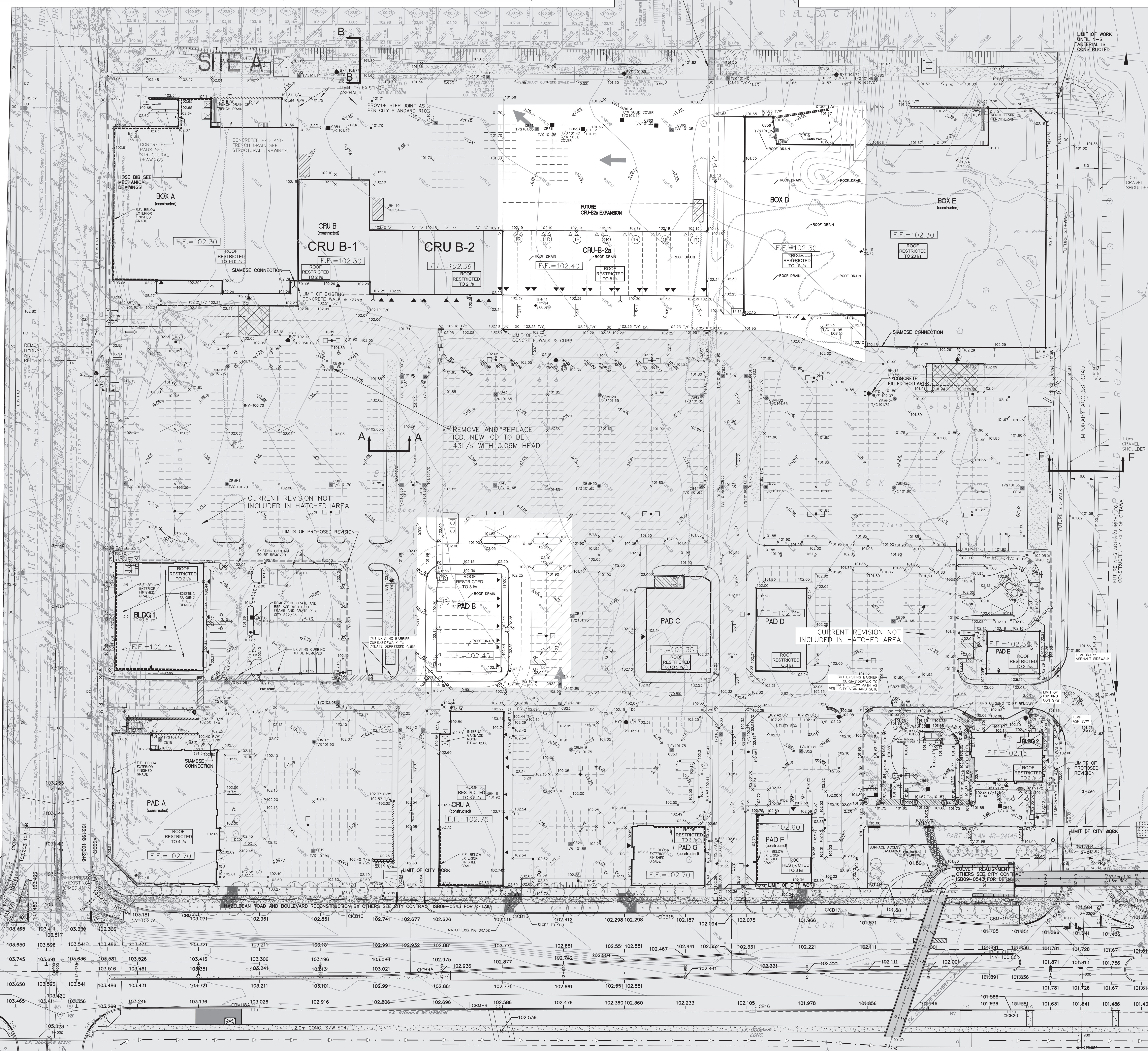


- LEGEND:**
- 102.00 PROPOSED GRADES
  - EXISTING SURFACE
  - PROPOSED SURFACE FLOW DIRECTION
  - PROPOSED CATCHBASIN MANHOLE
  - PROPOSED STREET CATCHBASIN
  - F.F.=102.30 PROPOSED FINISH FLOOR ELEVATION
  - PROPOSED RETAINING WALL
  - PROPOSED TERRACING
  - PROPOSED HYDRANT C/W BOTTOM OF FLANGE
  - PROPOSED BARRIER CURB
  - MAJOR STORM AND FLOW
- PAVEMENT STRUCTURE**
- HEAVY DUTY AREAS  
40mm H.B. ASPHALT SUPERPAVE 12.5  
50mm H.B. ASPHALT SUPERPAVE 10.0  
150mm GRANULAR A  
400mm GRAN B TYPE II
  - CAR PARK AREAS  
50mm H.B. ASPHALT SUPERPAVE 12.5  
150mm GRANULAR A  
300mm GRAN B TYPE II
  - CONCRETE PAD
  - INFILTRATION DRY WELL
  - BORE HOLE LOCATION AND ELEVATION  
SEE GEOTECHNICAL REPORT FOR DETAILS
  - CONCRETE SIDEWALK
  - AS-BUILT PICK UP

*Collette Gorni*

**COLETTE GORNI**  
PLANNER I  
PLANNING, INFRASTRUCTURE & ECONOMIC DEVELOPMENT DEPARTMENT, CITY OF OTTAWA

**APPROVED**  
By Collette Gorni at 9:20 am, Aug 10, 2020

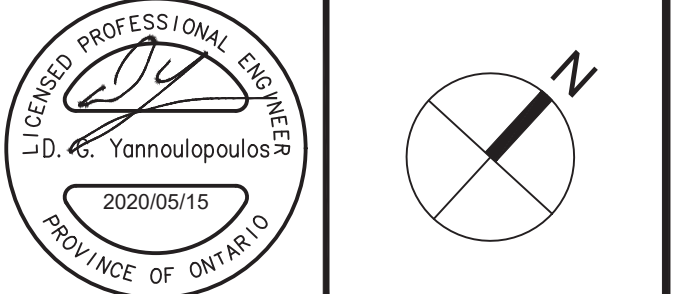


No.	REVISIONS	By	Date
30	REVISED STORAGE CELLS PER CLIENT REQUEST	DCY	20-05-15
29	REVISED AS PER CITY COMMENTS	DCY	20-04-30
28	REVISED AS PER CITY COMMENTS	DCY	20-03-27
17	REVISED AS PER CITY COMMENTS	DCY	19-12-20
26	COMMENTS FOR CRU B-3, PAD	DCY	19-08-29
25	BLDG 2 REAR DOOR GRADES PER ARCHITECT	DCY	18-06-18
24	ISSUED FOR CONSTRUCTION BLDG 2	DCY	18-04-06
23	ISSUED FOR TENDER	DCY	18-01-15
22	REVISED AS PER CITY COMMENTS	DCY	17-11-23
21	ISSUED FOR SPA	DCY	17-10-08
20	REVISED AS PER SITE PLAN	DCY	17-07-07
19	REVISED AS PER CITY COMMENTS	DCY	17-06-23
18	REVISED BLD 2 & PAD E	DCY	17-02-14
16	REVISED AS PER CITY COMMENTS	DCY	16-08-05
15	SPA BLDG 1 & 2	DCY	16-03-07
14	REVISED BLDG 1 & 2	DCY	16-01-21
13	REVISED AS PER SITE PLAN	DCY	14-11-03
12	SPA	DCY	14-09-09
11	REVISED AS PER SITE PLAN	DCY	14-07-31
10	COMMENTS	DCY	14-06-03
9	REVISED DOLLAR & CRUB	DCY	14-06-03
8	ISSUED FOR PAD F TENDER	DCY	13-02-14
7	REVISED FOR PAD F	DCY	12-11-16
6	REVISED FOR PAD F	DCY	12-08-01
5	REVISED SPRINKLER ROOM BOX E	DCY	12-03-09
4	AND PAD E	DCY	12-02-22
3	REVISED FOR BOX E	DCY	12-01-24
2	REVISED SITE PLAN PH1 & PH2	DCY	11-11-28
1	ISSUED FOR APPROVAL	DCY	11-10-27

**NORTH AMERICAN DEVELOPMENT GROUP**

**IBI GROUP**  
333 Preston Street  
Tower 1, Suite 400  
Ottawa, Ontario  
Canada K1S 5N4  
Tel (613) 225-1311  
FAX (613) 225-9868

Project Title  
**5705 HAZELDEAN ROAD**  
**OTTAWA, ONT.**



Drawing Title  
**GRADING PLAN**  
**PHASE 1 & 2**

Scale  
1:500

Design  
D.G.Y. Date  
OCTOBER 2011

Drawn  
E.H. Checked  
D.G.Y.

Project No.  
10113 Drawing No.  
C-202