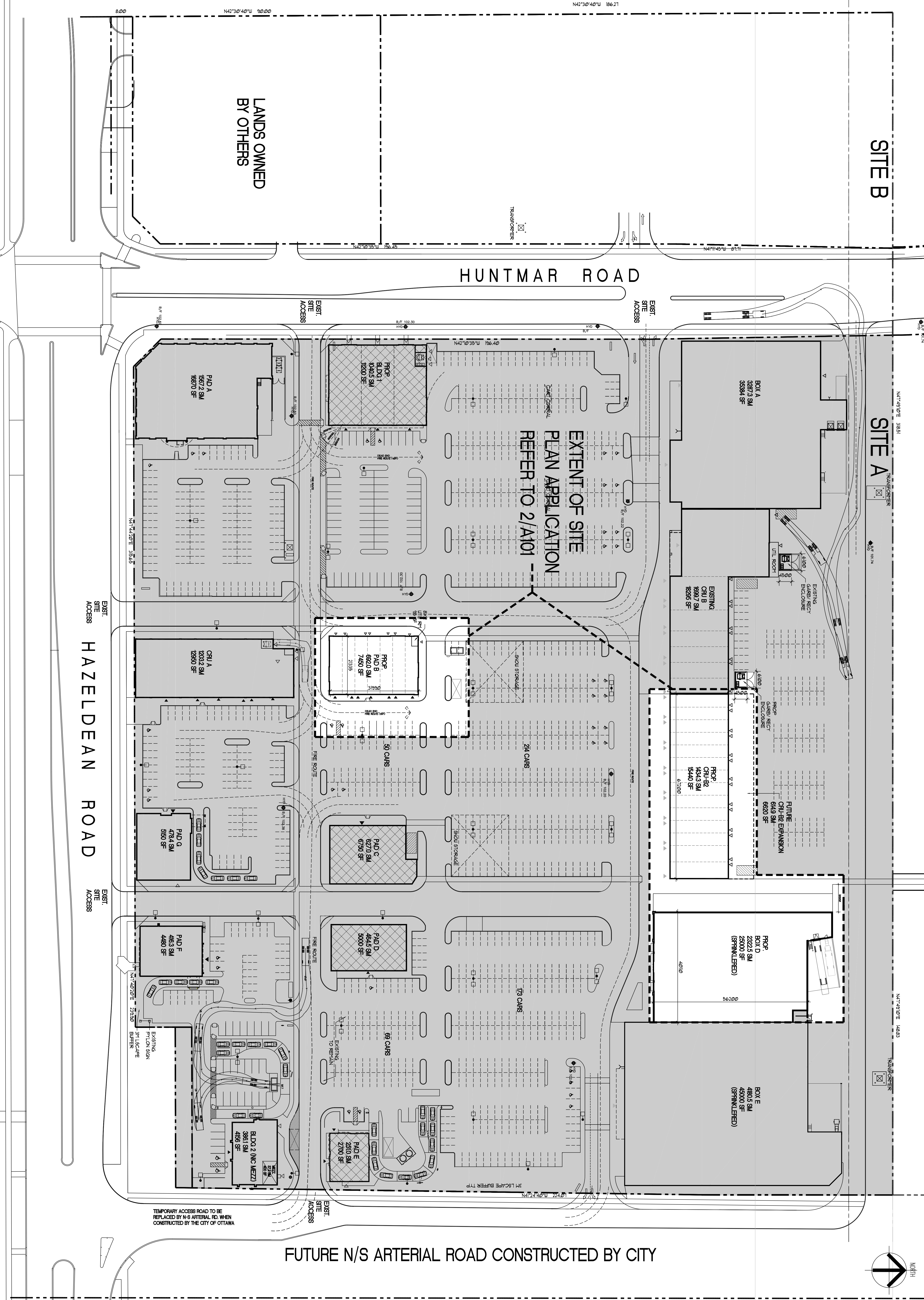


# SITE B

# SITE A



FUTURE N/S ARTERIAL ROAD CONSTRUCTED BY CITY

HAZELDEAN ROAD

HUNTMAR ROAD

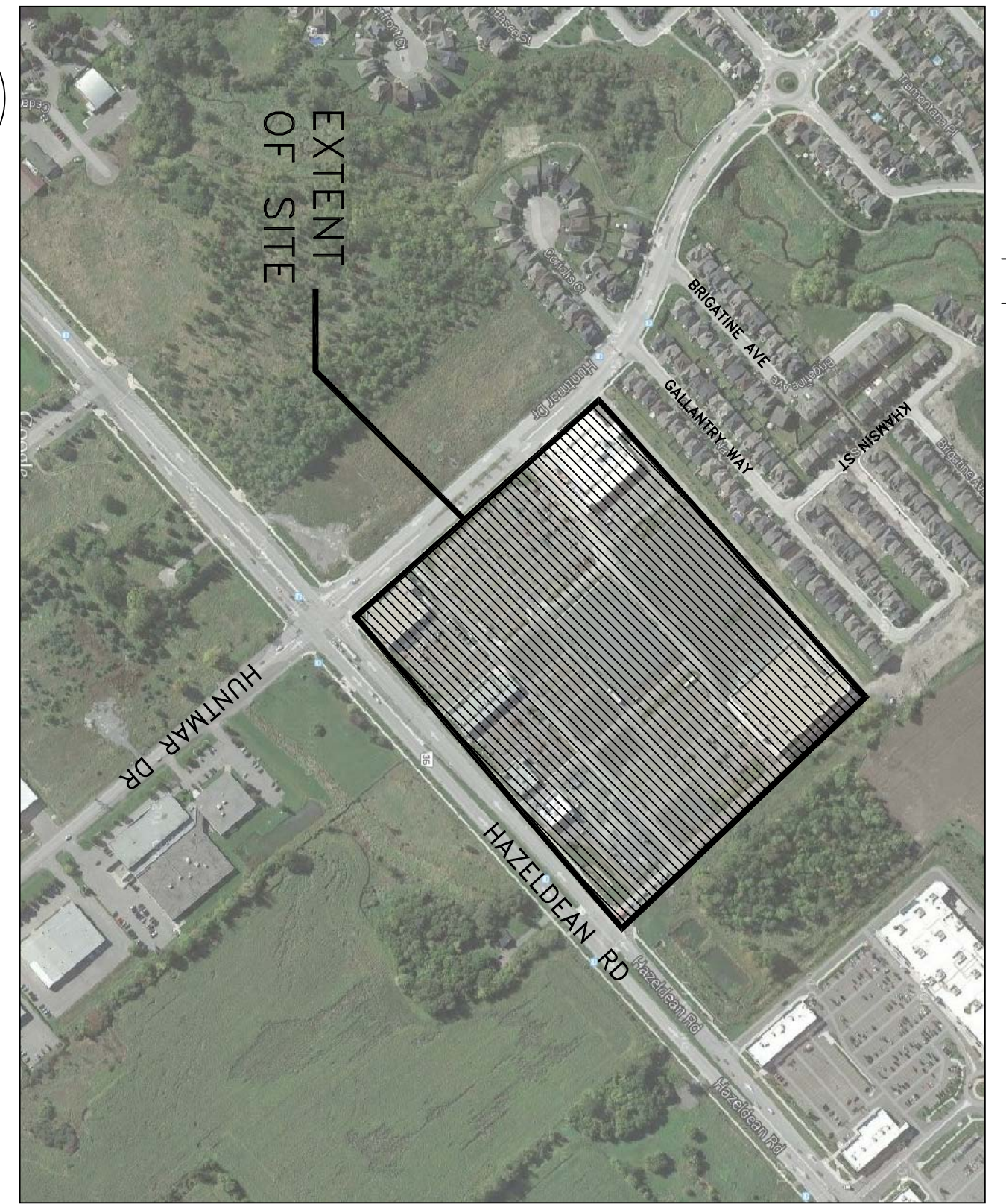
LANDS OWNED BY OTHERS

## 1 SITE PLAN

SCALE 1:500

SURVEY INFO TAKEN FROM:  
 TOPOGRAPHIC SURVEY OF  
 PART OF LOTS 21 & 28  
 CONCESSION 12  
 NEW CITY OF OTTAWA

## 2 INSET MAP



**SITE A**  
 84596.5 SM 20.9 ACRES  
 (EXCL. ROAD AND ESCAPE DEDICATION)  
 COVERAGE 23.7%  
 (6003 SM)

LOT FRONTAGE 298.605 M  
 BUILDING FRONTAGE 111930 M  
 % OF BUILDING FRONTAGE 40%  
 EXISTING

NO.	BY	DATE	ISSUED
1	AB	02/09/08	FOR SPA
2	AB	12/10/08	FOR SPA
3	AB	11/02/09	FOR SPA
4	AB	12/04/09	FOR SPA
5	CA	04/09/10	FOR SPA
6	AB	08/01/10	FOR SPA
7	AB	08/01/10	FOR SPA
8	AB	08/01/10	FOR SPA
9	AB	08/01/10	FOR SPA
10	AB	08/01/10	FOR SPA
11	AB	08/01/10	FOR SPA
12	AB	08/01/10	FOR SPA
13	AB	08/01/10	FOR SPA
14	AB	08/01/10	FOR SPA
15	AB	08/01/10	FOR SPA
16	AB	08/01/10	FOR SPA
17	AB	08/01/10	FOR SPA
18	AB	08/01/10	FOR SPA
19	AB	08/01/10	FOR SPA
20	AB	08/01/10	FOR SPA

SUB-TOTAL 13260.6 SM 142735 SF

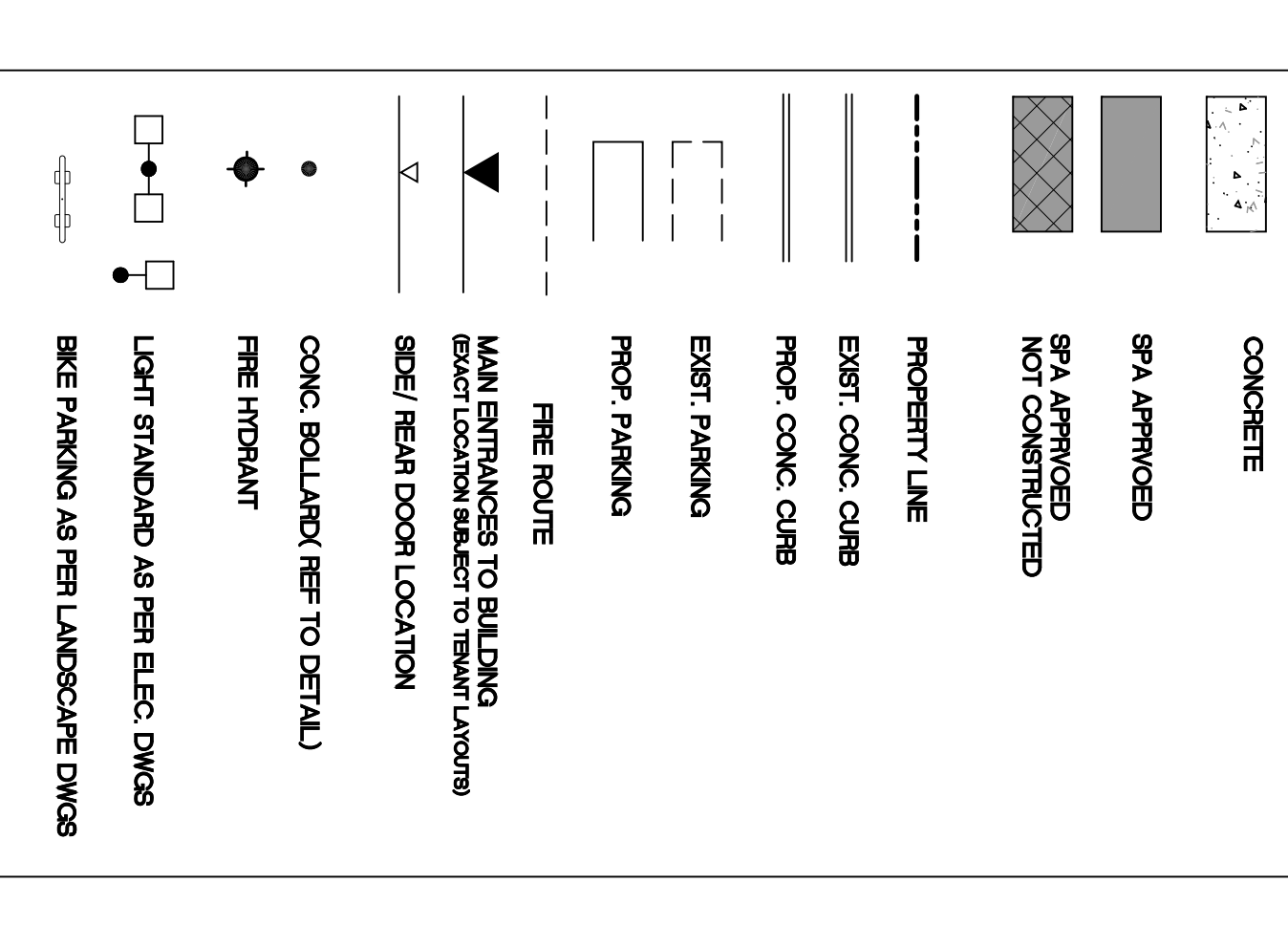
SPA APPROVED (MASTER PLAN)

PAD B 627.0 SM 6750 SF  
 AREA BELOW  
 PAD C 464.5 SM 5000 SF  
 PAD D 251.0 SM 2700 SF  
 BOX D AREA BELOW  
 BLDG 1 1040.5 SM 1200 SF  
 SUB-TOTAL 2383.0 SM 25650 SF

PROPOSED  
 BOX D 2222.5 SM 25000 SF  
 PAD B 692.0 SM 7450 SF  
 CRU B-2 1494.3 SM 15440 SF  
 SUB-TOTAL 4448.8 SM 47890 SF

TOTAL 20092.4 SM 216275 SF  
 PARKING PROVIDED 3/4/100 SM 693 CARS  
 PROVIDED 5/5/100 SM 106 CARS  
 5/1/1000 SF  
 INCLUDING 48 SPACES FOR SNOW STORAGE

### LEGEND



APPROVED  REFUSED   
 THIS DAY OF \_\_\_\_\_ 20\_\_  
 SPECIAL KAREL MANNING  
 PLANNING, INFRASTRUCTURE AND ECONOMIC  
 DEVELOPMENT DEPARTMENT  
 CITY OF OTTAWA

**SCORER LEE + ASSOCIATES ARCHITECTS INC.**  
 5707 HAZELDEAN ROAD  
 WEST KANATA, ONTARIO  
 TEL: (416) 362-7813  
 FAX: (416) 362-8819

PROJECT: COMMUNITY RETAIL DEVELOPMENT  
 DRAWING TITLE: MASTER PLAN  
 DRAWING NO.: 03007  
 DATE: JAN 16 2010  
 SCALE: A100  
 DRAWN BY: R13  
 CHECKED BY: [Signature]  
 APPROVED BY: [Signature]