

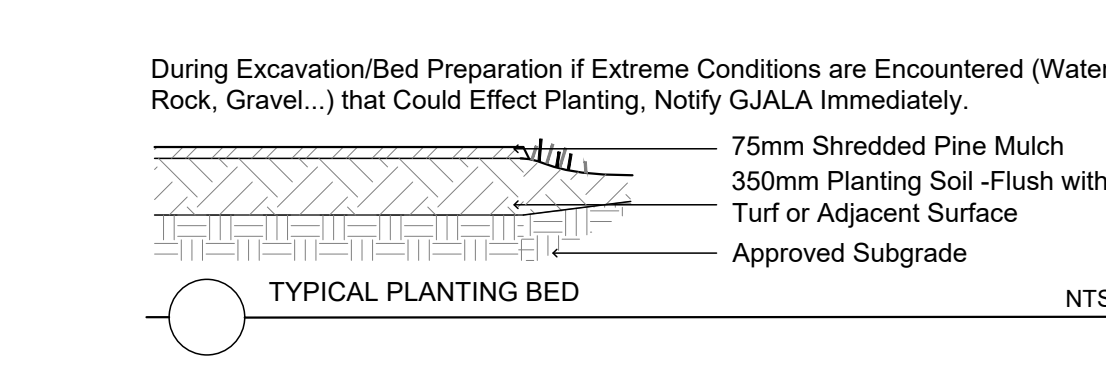
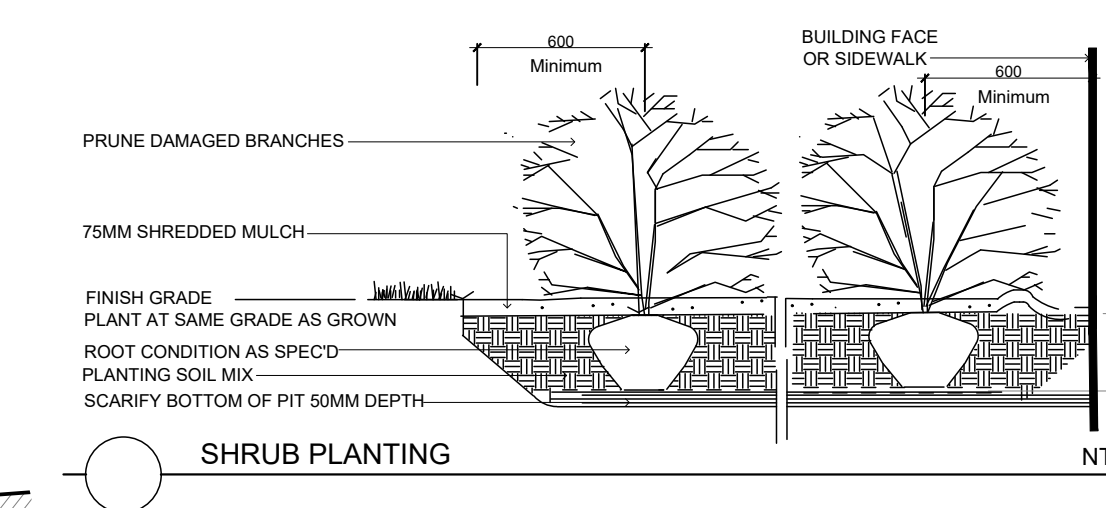
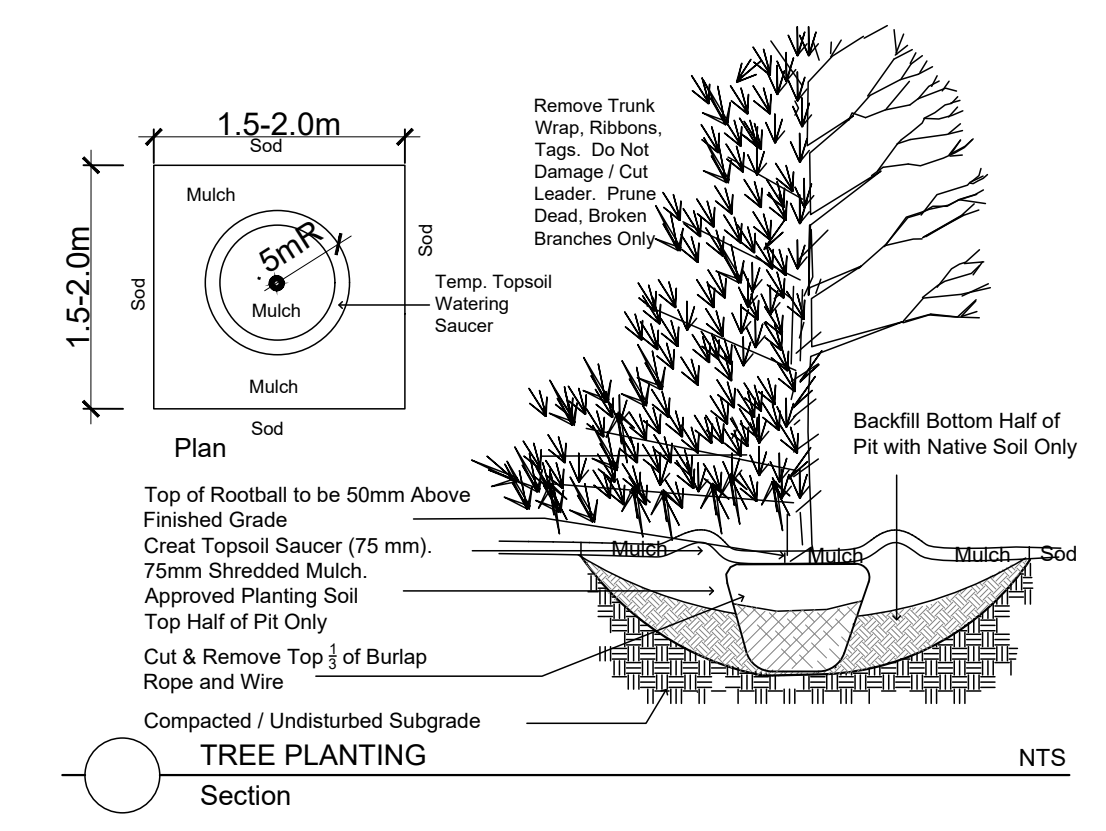
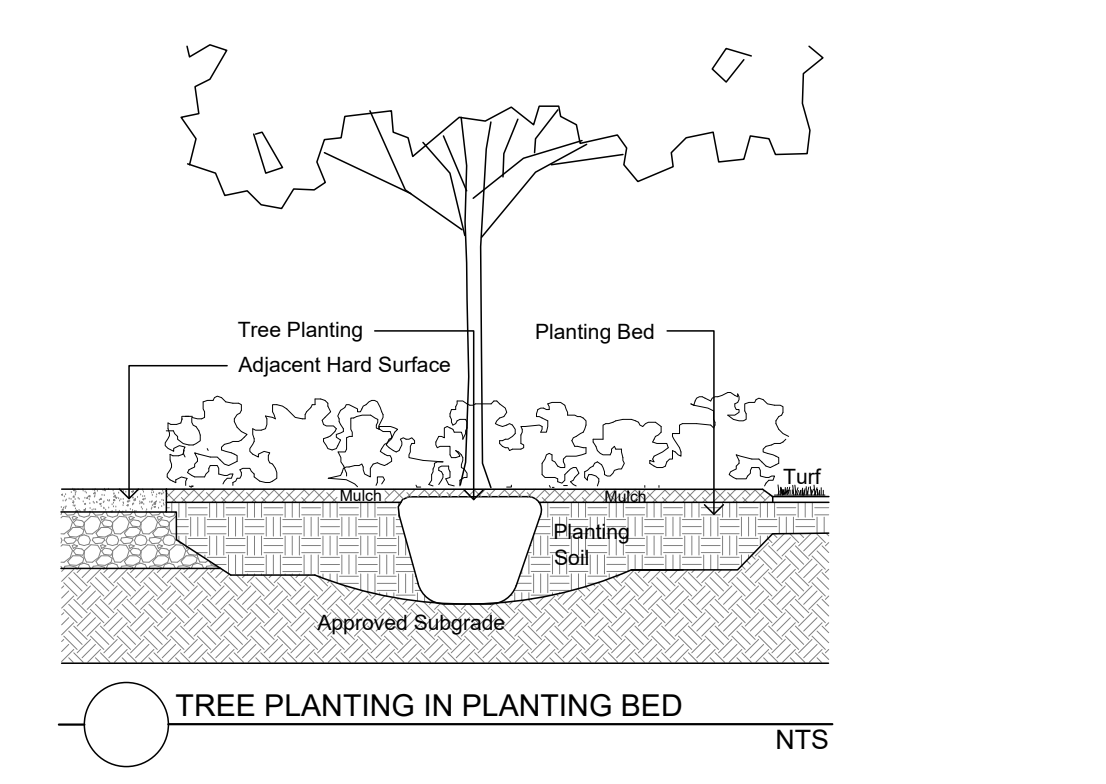
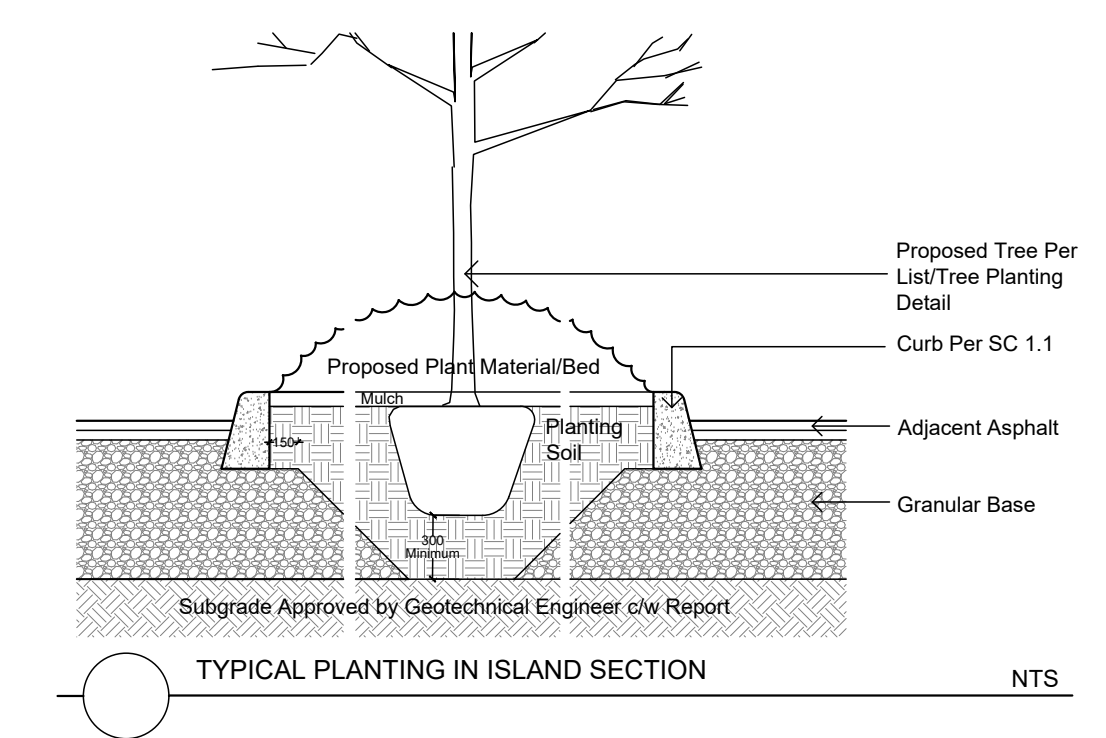
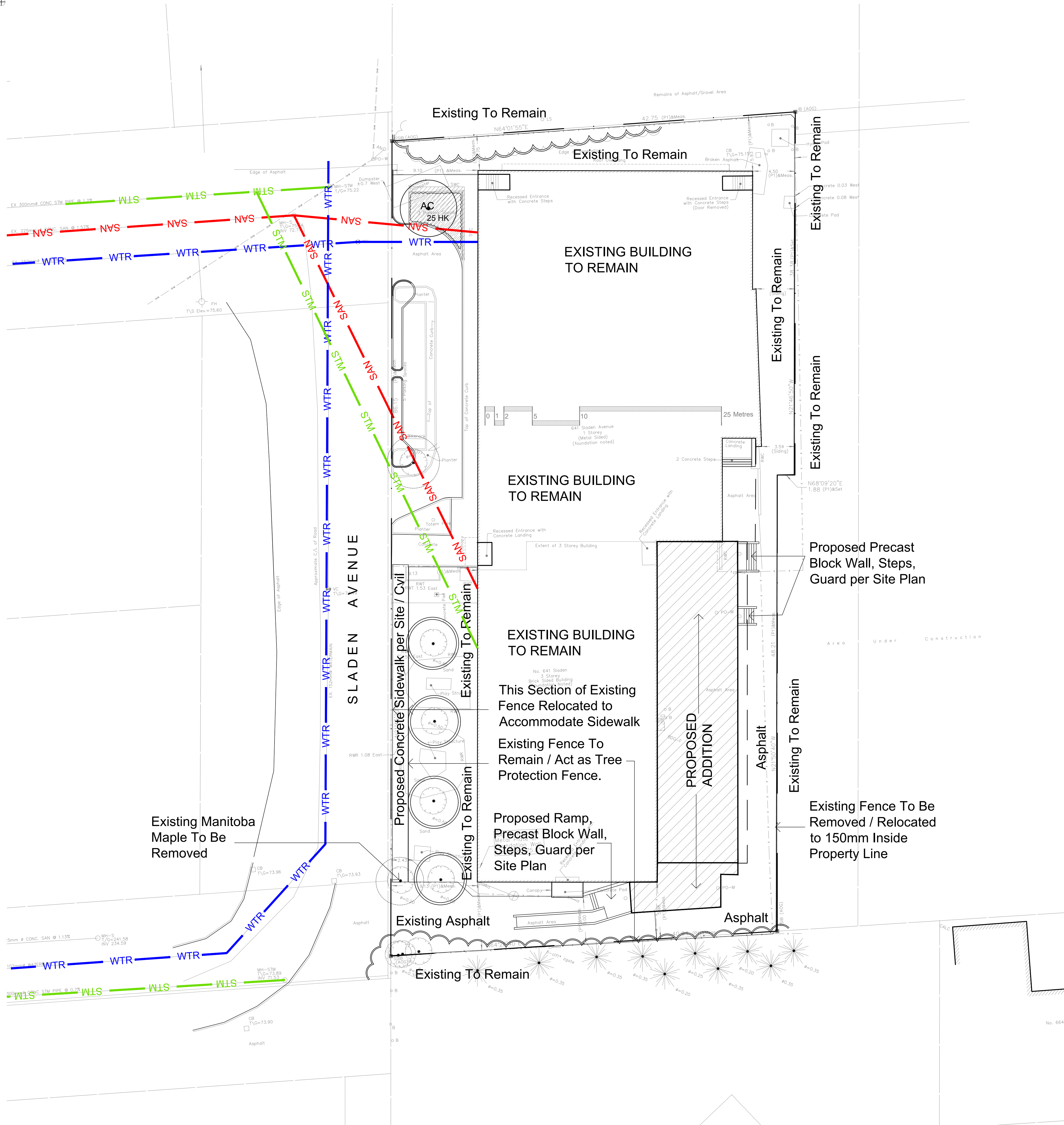
Drawing Remains the Property of/Copyright Reserved by Gino J. Aiello Landscape Architect. Do Not Use or Reproduce Without Approval of Gino J. Aiello. **NOT** To Be Used For Construction **Unless** indicated by Revision: **"FOR LANDSCAPE CONSTRUCTION"**. Contractor is Responsible for Verification of Site Locations of all Utilities. Report any Discrepancies Between Site and Drawing Immediately to Gino J. Aiello. Do NOT Proceed Until Clarified.

TURF AREAS TO BE SOD C/W 150MM DEPTH TOPSOIL ON APPROVED SUBGRADE | SOD TO BE #1 GRADE TURFGRASS NURSERY SOD per NSGA - Fine Fescue/Kentucky Bluegrass Sod | PLANTING MIX TO BE APPROVED BY LANDSCAPE ARCHITECT | PLANT MATERIAL TO MEET CNLA STANDARDS/BE APPROVED BY LANDSCAPE ARCHITECT PRIOR TO PLANTING | ALL MATERIALS & WORK TO BE MAINTAINED UNTIL FINAL ACCEPTANCE, (MOWING TURF, WEEDING BEDS, WATERING TURF & PLANTS) & INCLUDE 1 YEAR WARRANTY FROM DATE OF FINAL ACCEPTANCE | PROVIDE WATERING OF ALL PLANT MATERIAL AS REQUIRED FOR PROPER ESTABLISHMENT, UNTIL END OF WARRANTY PERIOD | REFER TO CIVIL ENGINEER'S DRAWING FOR ELEVATIONS / GRADING |

The Landscape Plan is to be read in conjunction with the grading, servicing, site and survey plan | Bare root material to be planted in season only | All plant material locations to be staked on site by the landscape contractor and checked by the landscape architect prior to planting | All trees to be preserved on or directly adjacent to the site will be protected | Plant material are to be installed a minimum of, 3.0m away from any part of any hydro transformer, 3.0m corridor between a fire hydrant and the curb, a 2.5m radius beside or behind a fire hydrant, 2.0m from any servicing/utility line or structure |

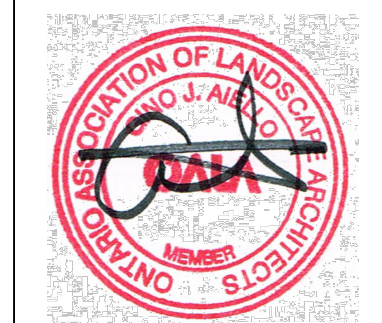
Plant List - Trees - 641 SLADEN AVENUE, ST. LAURENT ACADEMY					
Code	Qty.	Botanical Name	Common Name	Size	Condition
AC	1	<i>Amelanchier canadensis</i>	Tree Serviceberry	60mm cal	B + B specimen

Plant List - Shrubs - 641 SLADEN AVENUE, ST. LAURENT ACADEMY					
Code	Qty.	Botanical Name	Common Name	Size	Condition
HK	25	<i>Hypericum kalmianum</i>	St. John's Wort	40cm Ht.	Pot

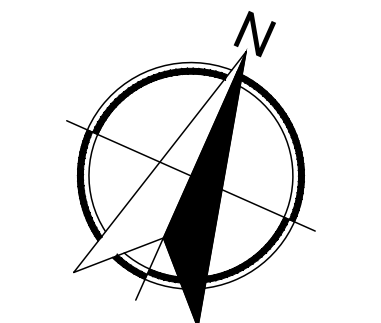


- Existing Tree to be Removed
- Existing Tree to Remain
- Proposed Deciduous Tree
- Proposed Planting Bed

No.	Revision	Date
4	THIRD SUBMISSION SPC	JULY 29 2022
3	SECOND SUBMISSION SPC	MAY 11 2020
2	FIRST SUBMISSION SPC	OCTOBER 3 2019
1	FOR COORDINATION	SEPTEMBER 2019



Academie St-Laurent Academy Inc.
641 Sladen Avenue, Ottawa, Ontario K1K 2S8
613 842 8047 ceo@st-laurentacademy.com



Gino J. Aiello | landscape architect GJALA.com
GJA Inc. Gino@GJALA.com (613) 286 5130
110 Dabury Road Unit # 9 | Ottawa Ontario | K2T 0Z2

Project **St-Laurent Academy ADDITION**
641 Sladen Avenue, Ottawa, Ontario K1K 2S8

Drawing **Landscape Plan**

Date: AUGUST 2019 Sheet Number
Scale: 1:200
City of Ottawa
Dwg #18102

L1

D07-12-19-0171

During Excavation/Bed Preparation if Extreme Conditions are Encountered (Water, Rock, Gravel...) that Could Effect Planting, Notify GJALA Immediately.