

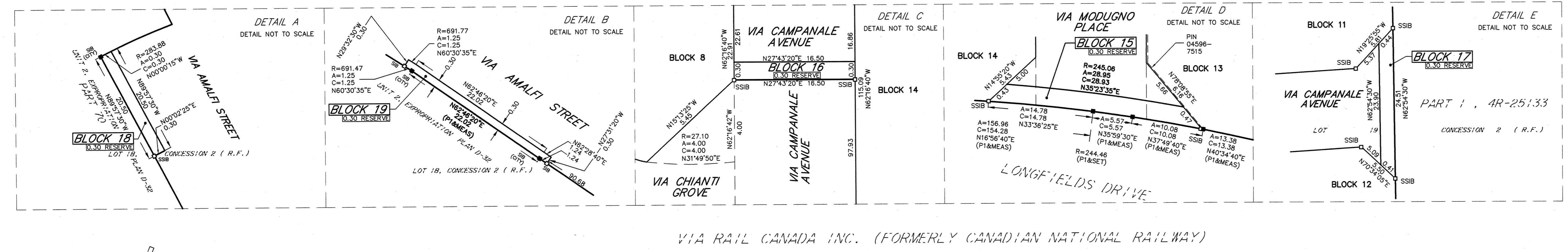
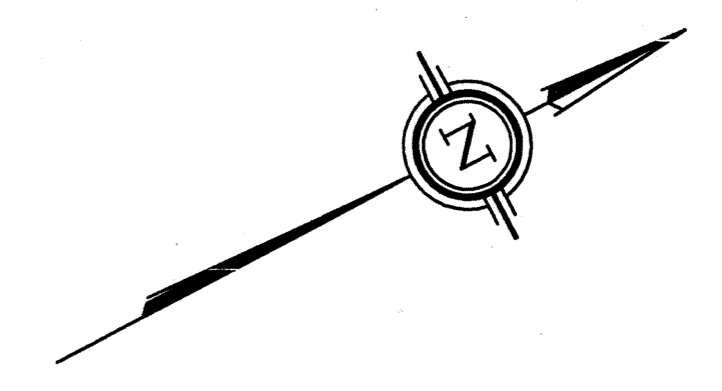
APPROVED UNDER SECTION 51 OF THE PLANNING ACT BY THE CITY OF OTTAWA THIS 3 DAY OF March 2012.

PLAN 4M-1463

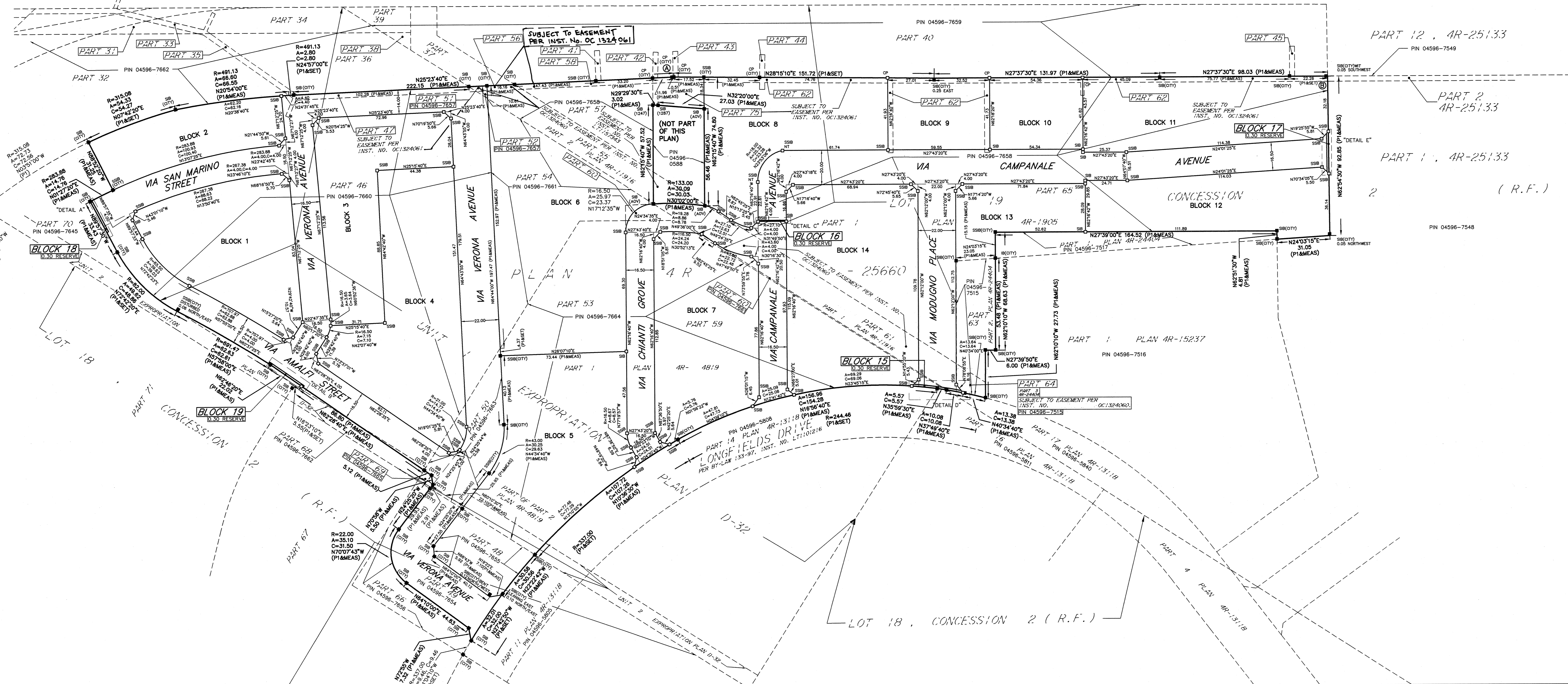
J. Moser
JOHN L. MOSER, GENERAL MANAGER
PLANNING AND GROWTH MANAGEMENT DEPARTMENT
INFRASTRUCTURE SERVICES AND COMMUNITY SUSTAINABILITY
CITY OF OTTAWA

I CERTIFY THAT THIS PLAN IS REGISTERED IN THE LAND REGISTRY OFFICE FOR THE LAND TITLES DIVISION OF OTTAWA-CARLETON NO. 4 AT 10:48 O'CLOCK ON THE 27 DAY OF March 2012 AND ENTERED IN THE PARCEL REGISTER FOR 4596-7654, PROPERTY IDENTIFIER 4596-7654-25660 AND THE 4596-7654-25660 REQUIRED CONSENTS ARE REGISTERED AS PLAN DOCUMENT NUMBER OC 129 5695
U.L. Gingras
Representative for
LAND REGISTRAR

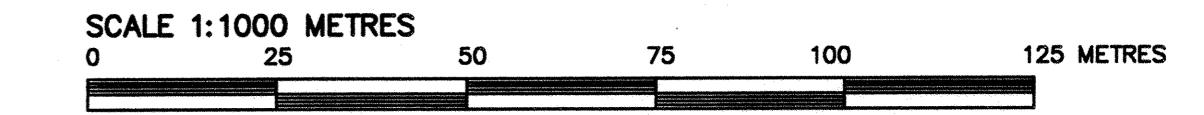
THIS PLAN COMPRISES THE LAND IDENTIFIED BY:
ALL OF PIN 04596-7515
ALL OF PIN 04596-7554
ALL OF PIN 04596-7555
ALL OF PIN 04596-7557
ALL OF PIN 04596-7558
ALL OF PIN 04596-7560
ALL OF PIN 04596-7561
ALL OF PIN 04596-7563
ALL OF PIN 04596-7564



VIA RAIL CANADA INC. (FORMERLY CANADIAN NATIONAL RAILWAY)



PLAN OF SUBDIVISION OF
**PART OF UNITS 1 AND 2
PLAN D-32
AND
PART OF LOTS 18 AND 19
CONCESSION 2 (RIDEAU FRONT)**
GEOGRAPHIC TOWNSHIP OF NEPEAN
CITY OF OTTAWA
STANTEC GEOMATICS LTD.
2012



METRIC
DISTANCES SHOWN ON THIS PLAN ARE IN METRES AND CAN BE CONVERTED TO FEET BY DIVIDING BY 0.3048
BEARING NOTE
BEARINGS HEREON ARE GRID BEARINGS AND ARE DERIVED FROM NCC CONTROL MONUMENTS NO. 019196801 (N5019186.959, E371601.867) AND NO. 01919680365 (N501328.240, E368569.539) AND ARE REFERRED TO THE CENTRAL MERIDIAN 78°30' WEST LONGITUDE OF ZONE 9 OF THE ONTARIO 3' M.T.M. COORDINATE SYSTEM. (NAD83 ADJUSTMENT)
DISTANCES ON THIS PLAN ARE GROUND DISTANCES AND CAN BE CONVERTED TO GRID DISTANCES BY MULTIPLYING BY THE COMBINED SCALE FACTOR OF 0.999933.
COORDINATES ARE IN METRES AND WERE DERIVED FROM GPS OBSERVATIONS USING THE CAN-NET NETWORK AND REFERRED TO THE ONTARIO COORDINATE SYSTEM M.T.M. NAD83 (ORIGINAL) ZONE 9.
COORDINATE VALUES ARE TO URBAN ACCURACY IN ACCORDANCE WITH O.REG 216/10.
• POINT A NORTHING 5016291.74, EASTING 363829.43
• POINT B NORTHING 5016629.62, EASTING 364008.11
CAUTION: COORDINATES CANNOT IN THEMSELVES BE USED TO RE-ESTABLISH CORNERS OR BOUNDARIES SHOWN ON THE PLAN.

OWNER'S CERTIFICATE:
THIS IS TO CERTIFY THAT:
1. BLOCKS 1 TO 14 BOTH INCLUSIVE, RESERVES BLOCKS 15 TO 19 INCLUSIVE, THE STREETS NAMELY VIA SAN MARINO STREET, VIA AMALFI STREET, VIA VERONA AVENUE, VIA CHIANTI GROVE, VIA MODUGNO PLACE AND VIA CAMPANALE AVENUE HAVE BEEN LAID OUT IN ACCORDANCE WITH OUR INSTRUCTIONS.
2. THE STREETS ARE DEDICATED AS PUBLIC HIGHWAYS.
2273707 ONTARIO INC.
DATED: August 2 2012
Tony Campanale
TONY CAMPANALE
Secretary-Treasurer
I HAVE THE AUTHORITY
TO BIND THE CORPORATION

LEGEND & NOTES: (IF APPLICABLE) ■ DENOTES FOUND MONUMENTS □ DENOTES SET MONUMENTS ○ DENOTES IRON BAR □ DENOTES STANDARD IRON BAR □ DENOTES SHORT STANDARD IRON BAR □ DENOTES CUT CROSS N&W DENOTES NAIL & WASHER	ALL PLANTED MONUMENTS SHOWN HEREON ARE IRON BARS (IB) UNLESS OTHERWISE NOTED. OU DENOTES ORIGIN UNKNOWN MEAS. M. PI DENOTES PLAN 4M-25660 SIB DENOTES CITY OF OTTAWA CP DENOTES CONCRETE PIN	SURVEYOR'S CERTIFICATE: I CERTIFY THAT: 1. THIS PLAN AND SURVEY ARE CORRECT AND IN ACCORDANCE WITH THE SURVEYS ACT, THE SURVEYORS ACT AND THE LAND TITLES ACT AND THE REGULATIONS MADE THEREUNDER. 2. THE SURVEY WAS COMPLETED ON THE <u>27</u> DAY OF <u>MARCH</u> 2012. DATED: <u>Aug 2/12</u> <i>T. Hartwick</i> T. HARTWICK ONTARIO LAND SURVEYOR	STANTEC GEOMATICS LTD. Ontario Land Surveyors OTTAWA - ONTARIO (613) 722-4420 FAX (613) 722-0789 E-mail: trova.hartwick@stantec.com Website: www.stantec.com P.L.M.: TH DRAWING: CT CHECKED: WJ/AL/LG/CA JOB NO.: 161612249-132 161612249-132-Companale_Longfields-rev10.dwg
--	--	---	---