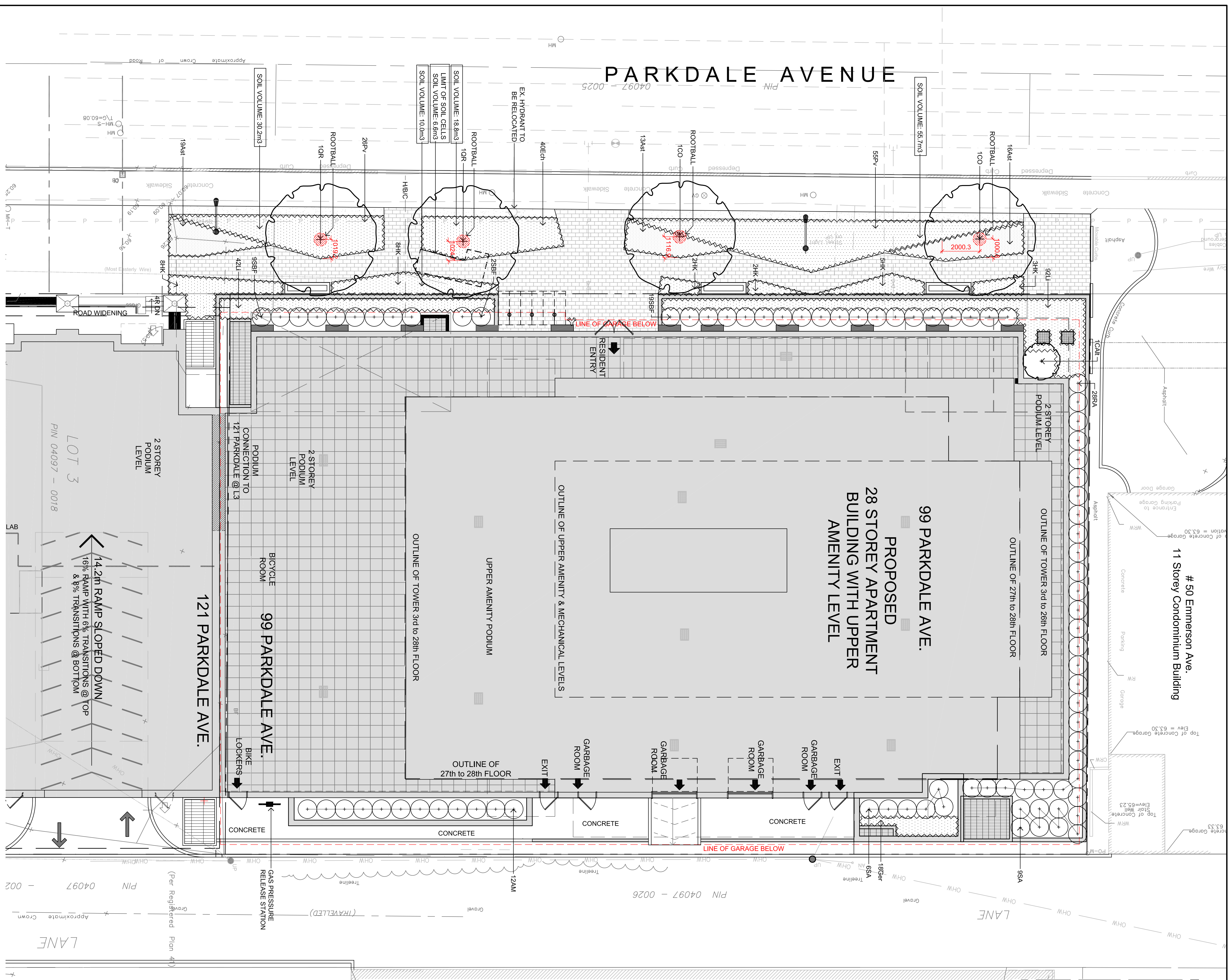


# 50 Emerson Ave.  
11 Storey Condominium Building

99 PARKDALE AVE.  
PROPOSED  
28 STOREY APARTMENT  
BUILDING WITH UPPER  
AMENITY LEVEL

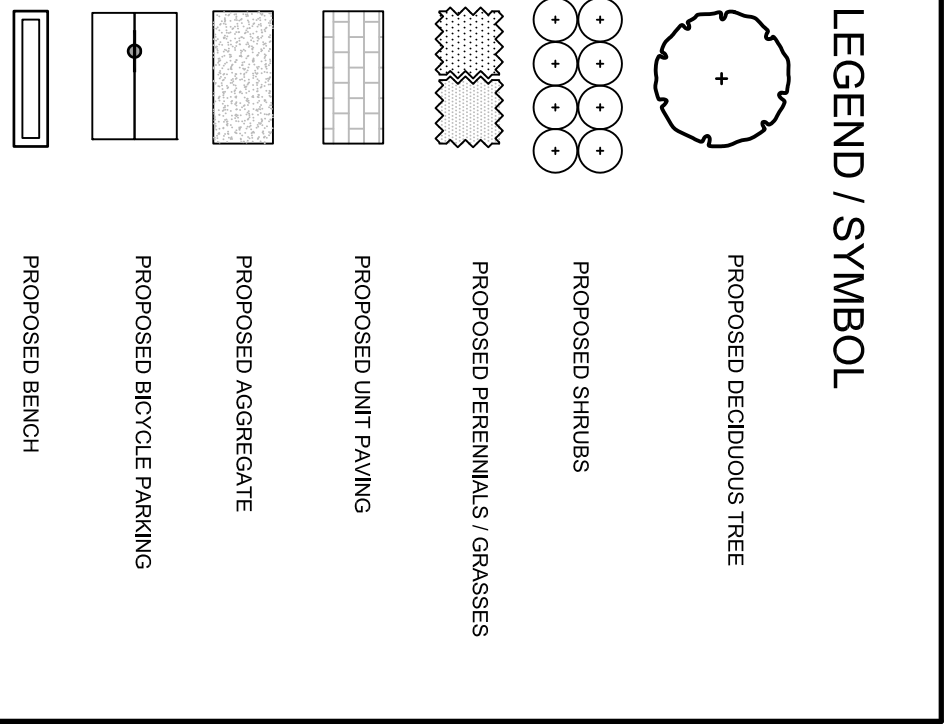
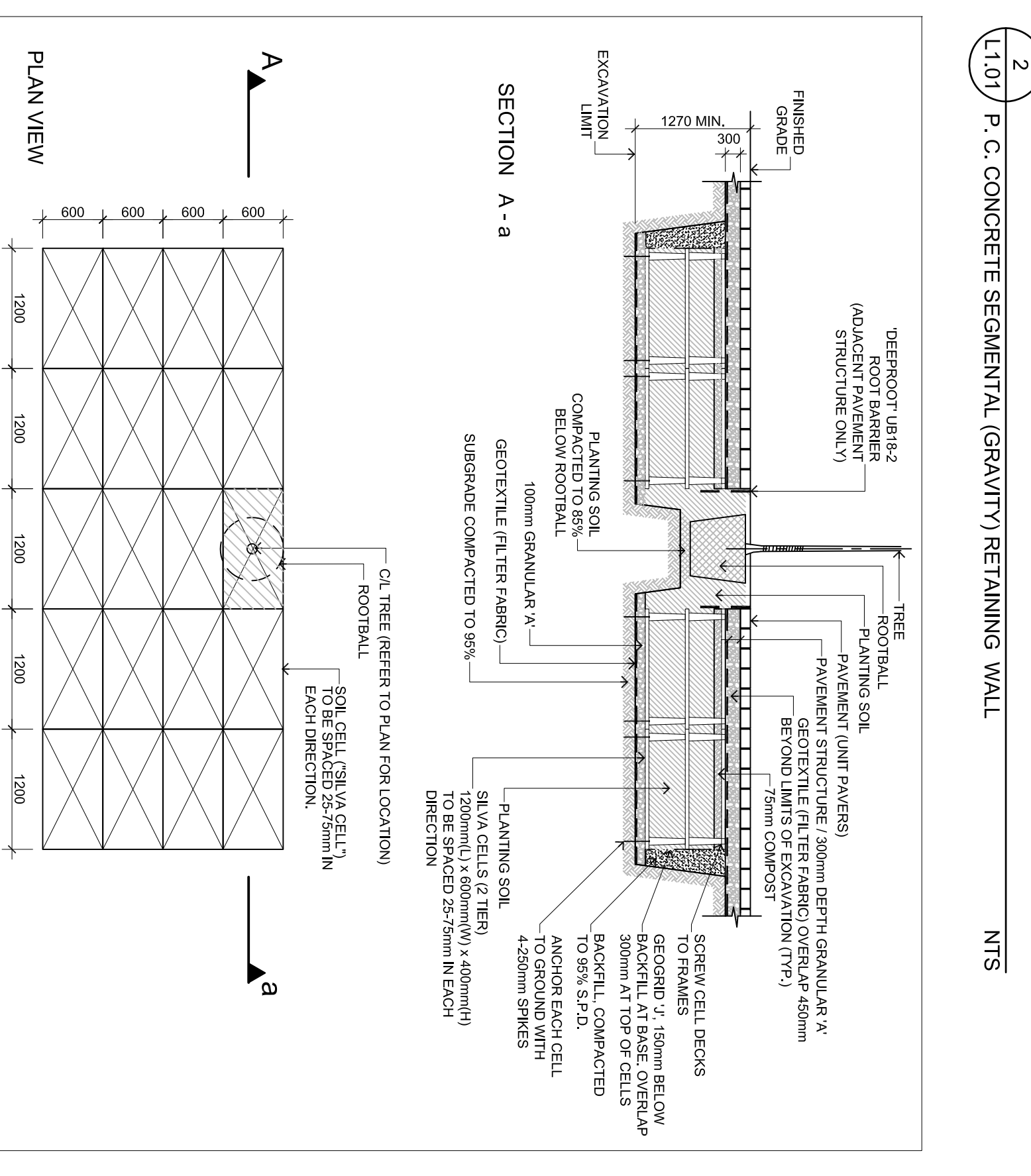
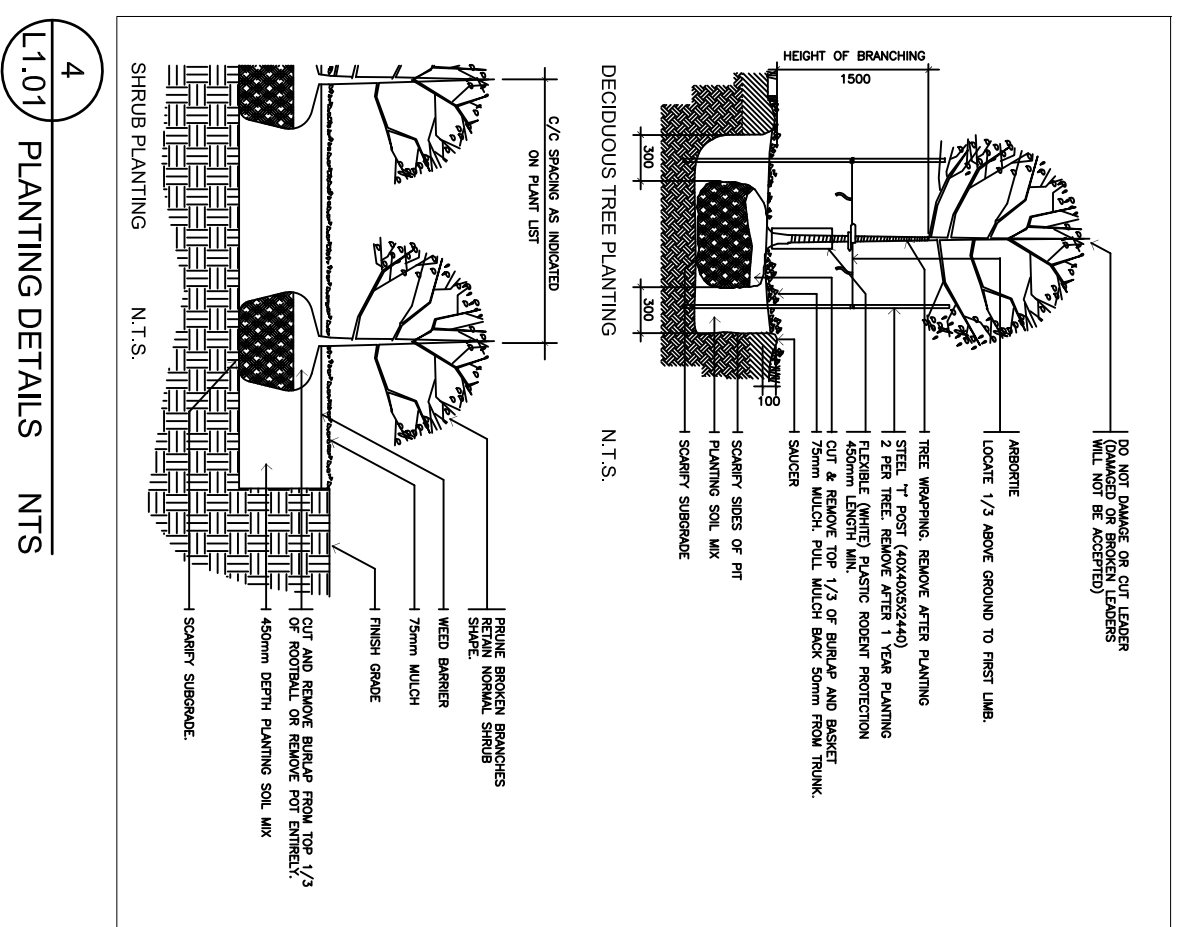
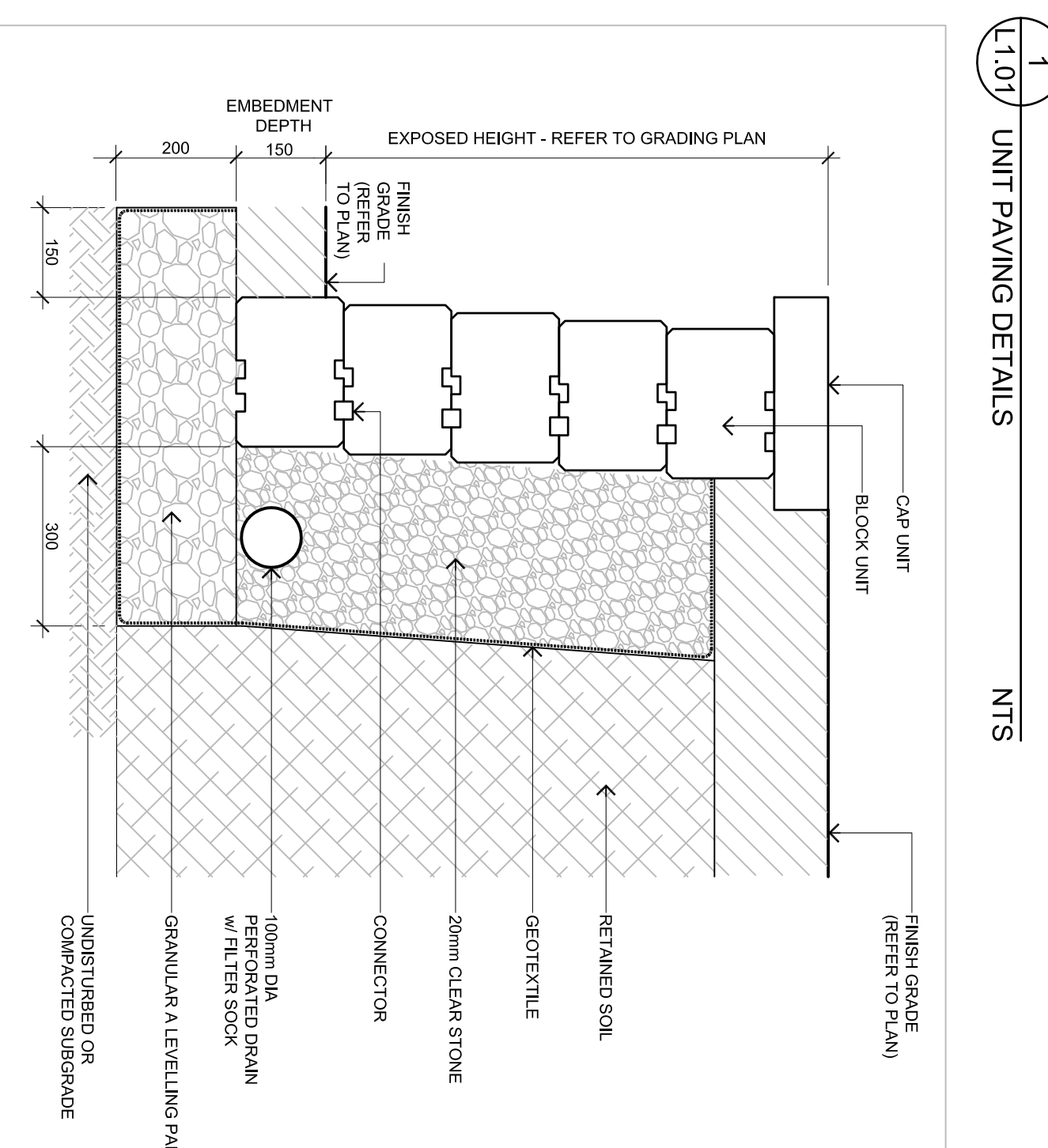
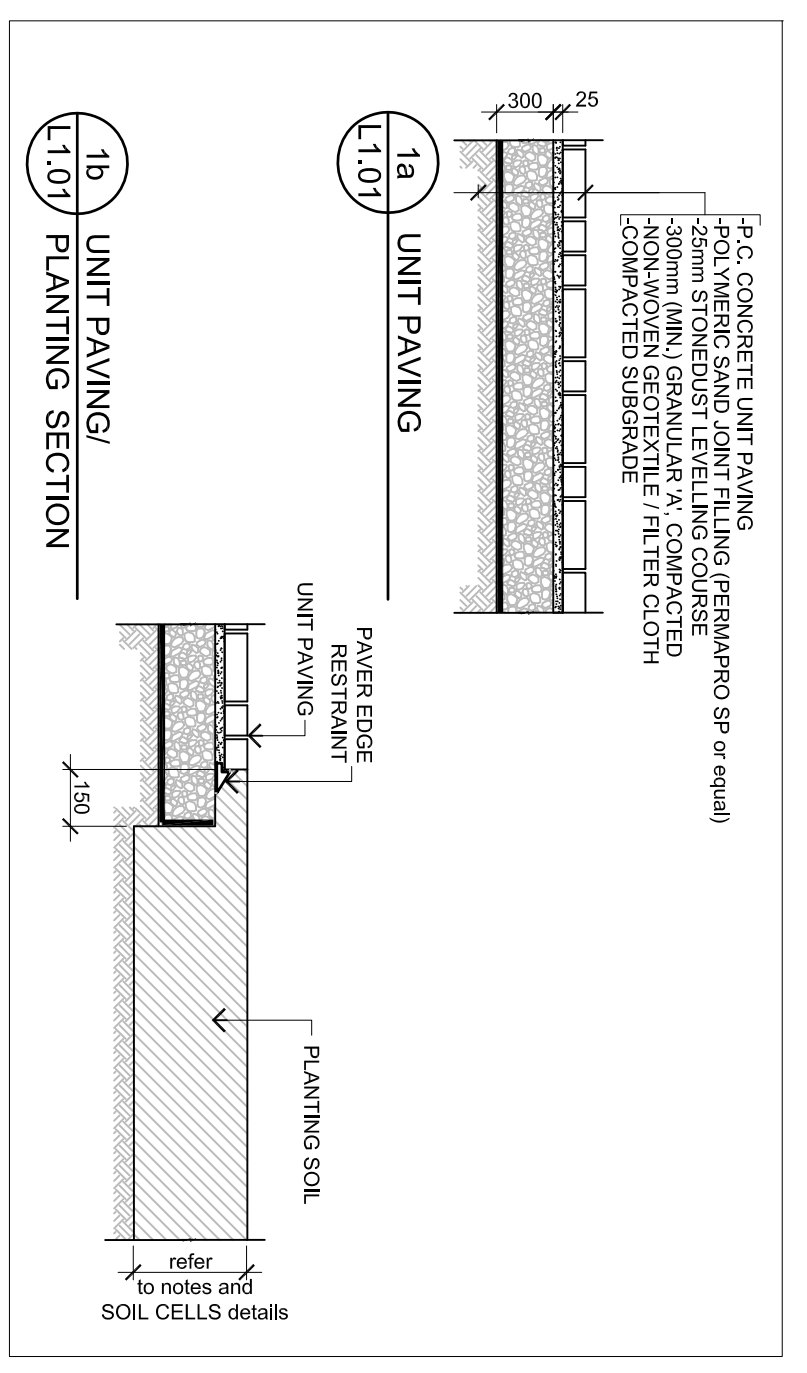


**PLANT MATERIAL SCHEDULE**

CODE	BOTANICAL NAME	COMMON NAME	QTY	SIZE	REMARKS
1	DECIDUOUS TREES	COMMON HEDGEROBBY	2	60mm cal	80% single stem, 1500mm height
2	QUERCUS RUBRA	RED OAK	2	60mm cal	80% triple stem, 1500mm height
3	ARONIA MELANOCARPA	BLACK CHERRYBERRY	12	50mm ht	pot, 100mm cal
4	CORNUS ALTERNIFLORA	PACODA DOGWOOD	3	150mm ht	80% triple stem, 1500mm height
5	RIBES AMERICANUM	WILD BLACK CURRANT	28	50mm ht	pot, 100mm cal
6	SYMPLOCARPUS ALBIS	SNOWBERRY	15	50mm ht	pot, 100mm cal
7	PERENNIALS	ASTER novae-angliae Purple Dome	48	15 cm pot	plant from site
8	PERENNIALS	FALE PURPLE CORNFLOWER	48	15 cm pot	plant from site
9	PERENNIALS	WILD GERANIUM/BLUE BLOOMING STAR	12	15 cm pot	plant from site
10	PERENNIALS	SWITCH GRASS	81	15cm pot	plant from site

**GENERAL NOTES**

- The drawing shall be read in conjunction with all relevant Architectural, Engineering and related Drawings and Documents.
- Refer to Engineering Drawings for Grading and Servicing.
- Contractor shall provide the location(s) of all serviceabilities by consulting Municipal Authorities and Utility companies and shall be responsible for adequate protection from Part material shall be No. 1 Grade and shall comply with the Metric Guide Specifications for Nursery Stock (latest edition), published by the Canadian Nursery Trades Association /
- Approximate only.** Contractor shall stake out locations on site prior to work.
- Contractor shall guarantee all plant material for a period of one (1) full year from the date of final Remains all areas damaged or disturbed beyond the limit of Work.
- Sod areas to receive 150mm topsoil. Sod shall be No. 1 quality conforming to the Canadian Standards for Sod.
- Shrubs shall be planted in a continuous prepared bed of 450mm depth planting soil mix covered over with a woven polypropylene weed control fabric (see Note 12).
- Perennials and Ornamental Grasses shall be planted in a continuous prepared bed of 450mm depth planting soil mix covered over with a woven polypropylene weed control fabric (see Note 12).
- Plant Material substitutions shall not be permitted without written approval from the Consultant.
- All materials and construction methods shall conform to City Standards and specification markers for reference and verification with the Consultant.
- THIS PLAN HAS BEEN PREPARED FOR MUNICIPAL SITE PLAN APPROVAL AND MAY NOT BE USED FOR ANY OTHER PURPOSE.**



*Sale Sht*

MANAGER, CENTRAL BRANCH  
PLANNING, INFRASTRUCTURE & ECONOMIC DEVELOPMENT DEPARTMENT, CITY OF OTTAWA

APPROVED  
By: [Signature] Date: 12.23 PM, Oct 19, 2019

NO.	DATE	REVISION
1	OCT 17/19	ISSUE FOR SNA
2	FEB 2/20	ISSUE FOR 2D SUBMISSION
3	MAR 1/20	ISSUE FOR 3D SUBMISSION
4	APR 3/20	ISSUE FOR 3D SUBMISSION
5	MAY 2/20	ISSUE FOR 3D SUBMISSION

**LEVSTEK CONSULTANTS**

18871 HIGHWAY 104, SUITE 101, OTTAWA, ONTARIO K2A 2R6

**BRIGIL**

**99 PARKDALE**  
OTTAWA ONTARIO

**LANDSCAPE PLAN**

Project: 99 PARKDALE  
Drawing Title: LANDSCAPE PLAN  
Scale: 1:100  
Date: AUG 2019  
Project No: 1167  
Drawing No: L1.01