

IT IS THE RESPONSIBILITY OF THE APPROPRIATE CONTRACTOR TO CHECK AND VERIFY ALL DIMENSIONS ON SITE AND TO REPORT ALL ERRORS AND/OR OMISSIONS TO THE ARCHITECT.
ALL CONTRACTORS MUST COMPLY WITH ALL PERTINENT CODES AND BY-LAWS.
THIS DRAWING MAY NOT BE USED FOR CONSTRUCTION UNTIL SIGNED BY THE ARCHITECT.
DO NOT SCALE DRAWINGS.
COPYRIGHT RESERVED.

NOTATION SYMBOLS:

- (00) INDICATES DRAWING NOTES, LISTED ON EACH SHEET.
- (01) INDICATES ASSEMBLY TYPE; REFER TO TYPICAL ASSEMBLIES SCHEDULE.
- (02) INDICATES WINDOW TYPE; REFER TO WINDOW ELEVATIONS AND DETAILS ON A900 SERIES.
- (03) INDICATES DOOR TYPE; REFER TO DOOR SCHEDULE AND DETAILS ON A900 SERIES.
- (04) TITLE
- (05) SCALE
- (06) DETAIL REFERENCE PAGE
- (07) DETAIL CROSS REFERENCE PAGE

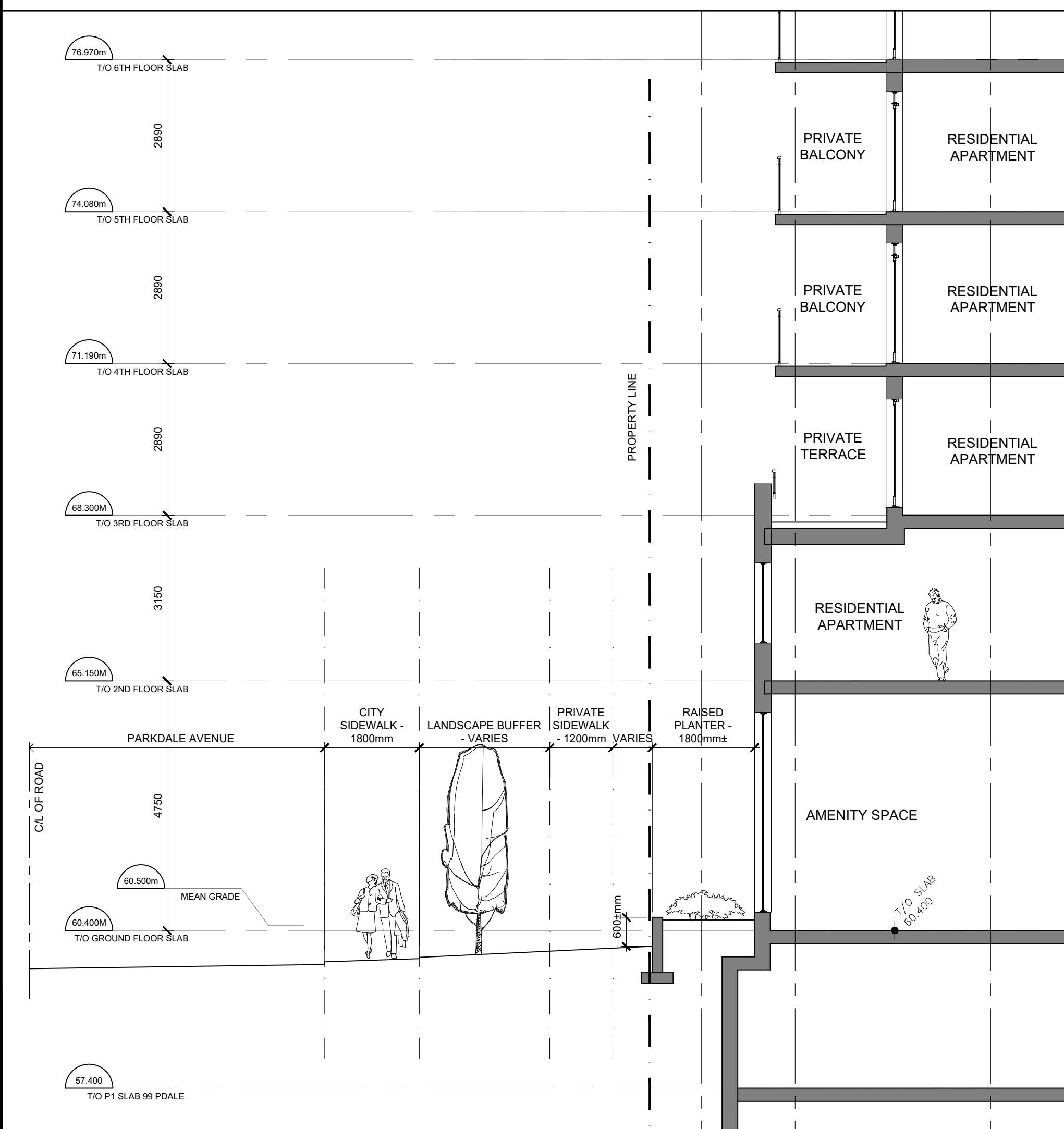
- GENERAL NOTES:**
- (A) REFER TO TYPICAL ASSEMBLIES SHEET FOR WALL, PARTITION, ROOF CEILING & FLOOR TYPES.
 - (B) FOR DOOR TYPES AND HARDWARE REQUIREMENTS REFER TO DOOR SCHEDULE ON A900 SERIES.
 - (C) ALL INTERIOR DIMENSIONS ARE TAKEN FROM THE FACE OF DRYWALL.
 - (D) ALL EXTERIOR DIMENSIONS ARE TAKEN FROM THE FACE OF CLADDING.
 - (E) ALL EXTERIOR WALLS ARE TO BE TYPE 'W1' UNLESS NOTED OTHERWISE.
 - (F) ALL INTERIOR PARTITIONS ARE TO BE TYPE 'P1' UNLESS NOTED OTHERWISE.



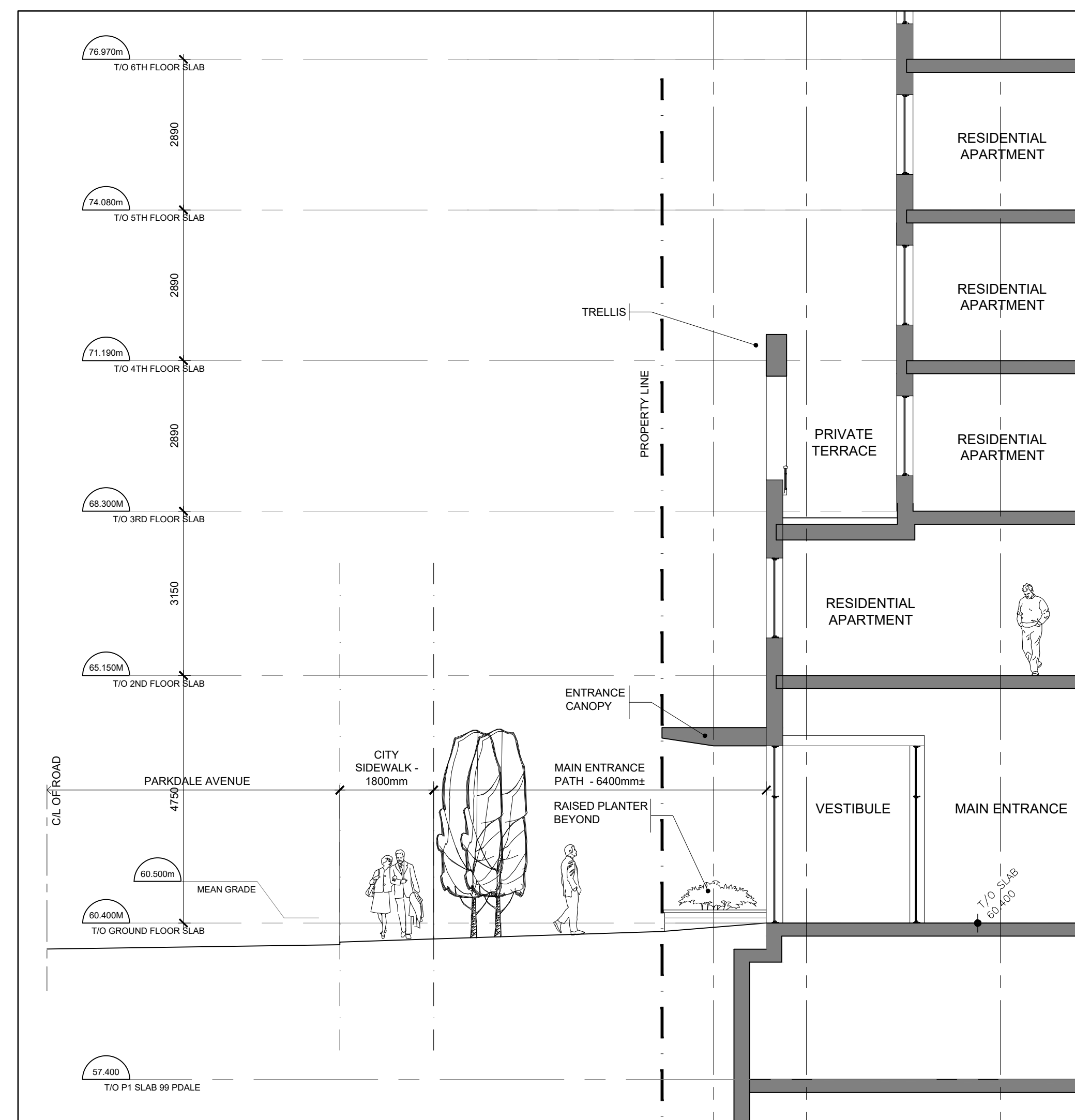
APPROVED
By Saide Sayah at 12:38 pm, Oct 19, 2020

No.	DESCRIPTION	DATE
11		
10		
9		
8		
7	ISSUED FOR REVISED SPC - R4	Apr. 15, 20
6	ISSUED FOR REVISED SPC - R3	Mar. 06, 20
5	ISSUED FOR REVISED SITE PLAN CONTROL	Feb. 07, 20
4	ISSUED FOR SITE PLAN CONTROL	Oct. 22, 19
3	ISSUED FOR REVISED LAYOUT	Oct. 22, 19
2	ISSUED FOR REVISED LAYOUT	July 16, 19
1	ISSUED FOR DESIGN CONCEPT	Apr. 08, 19

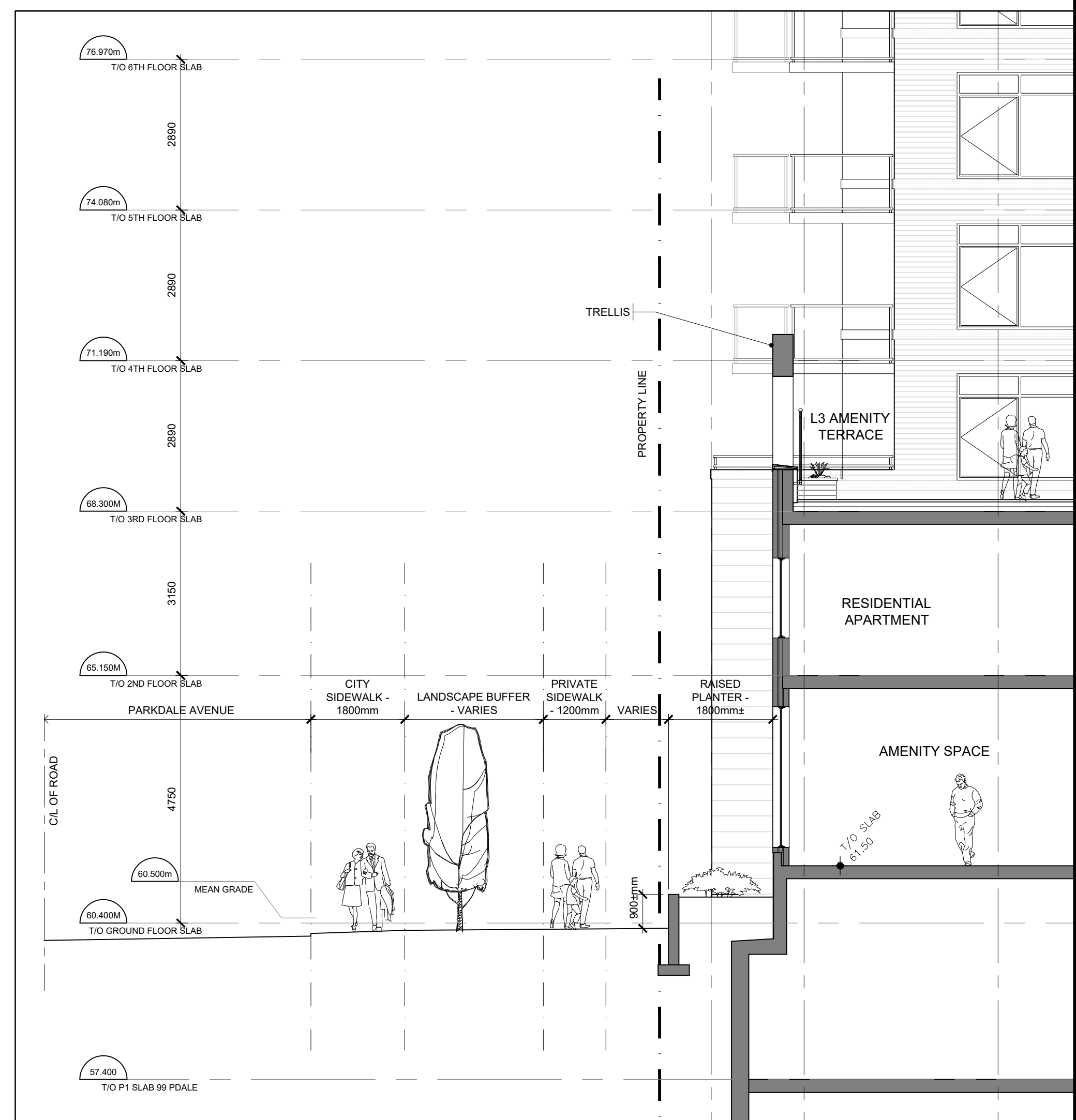
ENLARGED WEST (PARKDALE) ELEVATION



STREETSCAPE SECTION A-AA



STREETSCAPE SECTION B-BB



STREETSCAPE SECTION C-CC

ARCHITECT SEAL: NORTH ARROW: CLIENT: **BRIGIL**

ARCHITECT: **rla / architecture**
roderick lahey architect inc.

PROJECT TITLE:
99 PARKDALE
OTTAWA ONTARIO
SHEET TITLE:
ENLARGED WEST (PARKDALE) ELEVATION

DRAWN: J.G.	CHECKED: RLA
SCALE: 1:200	SHEET No. A-6
PROJECT No. 1918	

D07-12-19-0176